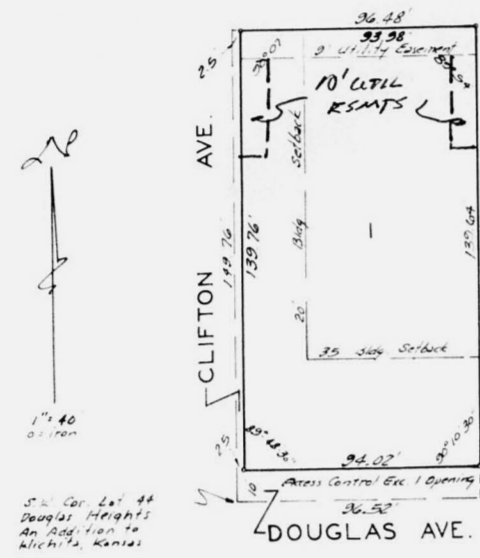


Z

FINAL PLAT
OFFICE COPY
DO NOT REMOVE
SD 72-65

ZAKAS ADDITION

WICHITA, KANSAS.



State of Kansas) S.S. Ide, Baughman Company, Surveyors
Seewick County) S.S. Ide, Baughman Company, Surveyors
in aforesaid county and state do hereby certify that
we have surveyed and plotted "ZAKAS ADDITION"
Wichita, Kansas, and that the accompanying plat is
a true and correct exhibit of the property surveyed,
described as and being a replat of Lots 44 and 45,
except the north 87 feet thereof, Douglas Heights an
Addition to Wichita, Kansas.

Baughman Company
Surveyor

This plat of "ZAKAS ADDITION"
Wichita, Kansas, has been submitted to and approved
by the Wichita-Seewick County Metropolitan Area
Planning Commission, Wichita, Kansas.
Dated this _____ day of _____, 1972.
Wichita-Seewick County Metropolitan Area Planning Commission

Secretary

9/10/72-65
approved subject to:

This plat approved and all
dedications shown herein accepted by the Board
of Commissioners of the City of Wichita, Kansas,
this _____ day of _____, 1972.
A. Dedicating 18' utility easements adjacent to the
east and west lines of the plat and easements
running from a point 10' south of the existing
sanitary sewer line to the north line of subject
property.

This plat approved and all
dedications shown herein accepted by the Board
of Commissioners, Seewick County, Kansas, this
_____ day of _____, 1972.
B. Recording in 30 days 117710 Chairman

Note: see letter dated 8-18-72 Commissioner
County Clerk

Entered on transfer record
1972
County Clerk

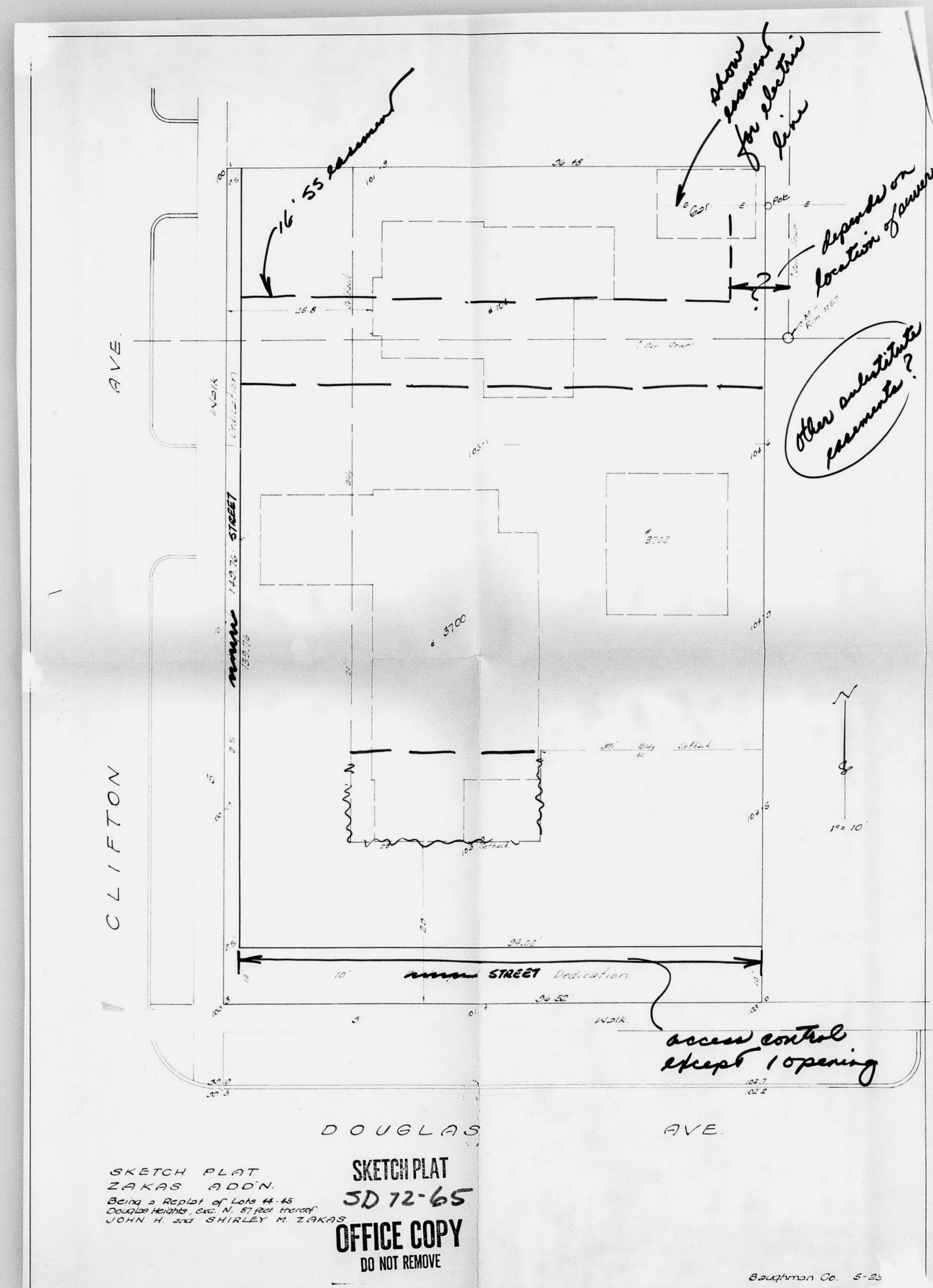
Know all men by these presents
that we John H. Zakas and Shirley M. Zakas, his
wife, have caused the land described in the surveyors
certificate to be platted into a lot and street to be
known as "ZAKAS ADDITION" Wichita, Kansas. An
easement is hereby granted as indicated for the con-
struction and maintenance of all public utilities.
The streets are hereby dedicated to and for the
use of the public. All abutters rights of access to
or from Douglas Avenue over and across the south
line of Lot 1 are hereby granted to the City of
Wichita, provided however that Lot 1 shall have
access to Douglas Avenue at 1 point as shall be
determined by the City Engineer of the City of
Wichita, Kansas.

State of Kansas) S.S. Re it remembered that on this
Seewick County) S.S. Re it remembered that on this
_____ day of _____, 1972, before me a
notary public in aforesaid county and state came
John H. Zakas and Shirley M. Zakas, his wife,
to me known to be the same persons who executed
the foregoing instrument of writing and duly ac-
knowledged the execution of the same. In testimony
whereof I have hereunto set my hand and affixed
my notarial seal the day and year above written.

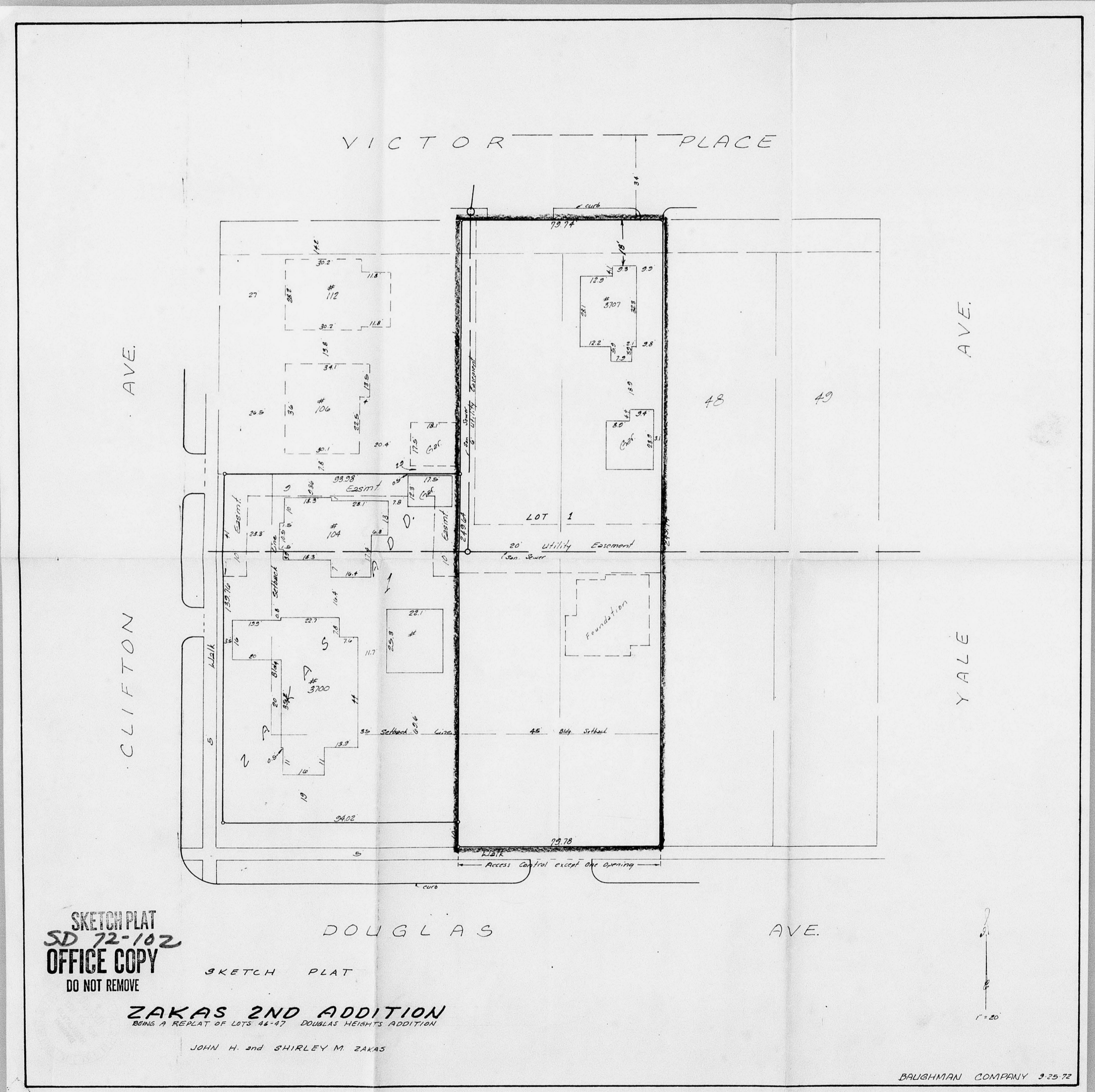
My Commission Expires: _____
Notary Public

State of Kansas) S.S. This is to certify that this
Seewick County) S.S. This is to certify that this
plat was filed for record in the office of the
Register of Deeds this _____ day of _____,
1972, at _____ o'clock _____ M., and is duly recorded.

Register of Deeds
Deputy



SKETCH PLAT
ZAKAS ADDITION
Being a Replat of Lots 44-45
Douglas Heights, S.W. 1/4, 18th Street
JOHN H. and SHIRLEY M. ZAKAS
SKETCH PLAT
SD 72-65
OFFICE COPY
DO NOT REMOVE



SKETCH PLAT
SD 72-102
OFFICE COPY
DO NOT REMOVE

SKETCH PLAT

ZAKAS 2ND ADDITION
BEING A REPLAT OF LOTS 46-47 DOUGLAS HEIGHTS ADDITION

JOHN H. and SHIRLEY M. ZAKAS

FINAL PLAT
SD 72-102 ZAKAS SECOND ADDITION
OFFICE COPY
DO NOT REMOVE

WICHITA, KANSAS.

State of Kansas) s.s. We, Baughman Company, Surveyors
Sedwick County) and state do hereby certify that we
in aforesaid county and state do hereby certify that we
have surveyed and platted "ZAKAS SECOND ADDITION"
Wichita, Kansas, and that the accompanying plat is a
true and correct exhibit of the property surveyed,
described as, and being a replat of Lots 46 and 47
together with the south 13 feet of vacated Victor
Place adjacent to said Lots, all in Douglas Heights
an Addition to Wichita, Kansas.

Baughman Company
Surveyor

Know all men by these presents
that we John H. Zakas and Shirley M. Zakas, his
wife, have caused the land described in the surveyors
certificate to be platted into a lot and street to be
known as "ZAKAS SECOND ADDITION" Wichita,
Kansas. Easements are hereby granted as indicated
for the construction and maintenance of all public
utilities. The street is hereby dedicated to and for
the use of the public. All easements rights of access
to or from Victor Place over and across the north
line of Lot 1, and to or from Douglas Avenue
over and across the south line of Lot 1, are hereby
granted to the City of Wichita, provided however
that Lot 1 shall have access to Douglas Avenue
at one point as shall be determined by the City
Engineer of the City of Wichita, Kansas.

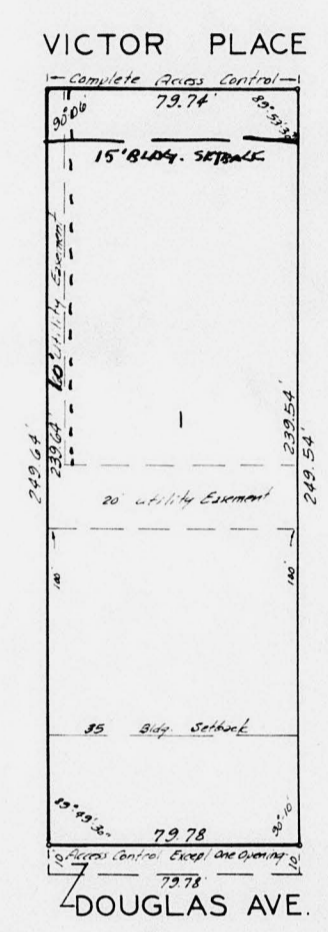
State of Kansas) s.s. Be it remembered that on this
Sedwick County) day of _____ 1972, before me
a notary public in aforesaid county and state
came John H. Zakas and Shirley M. Zakas, his
wife, to me known to be the same persons who
executed the foregoing instrument of writing and
duly acknowledged the execution of the same.
In testimony whereof I have hereunto set my
hand and affixed my notarial seal the day and
year above written.

My Commission Expires: _____ Notary Public

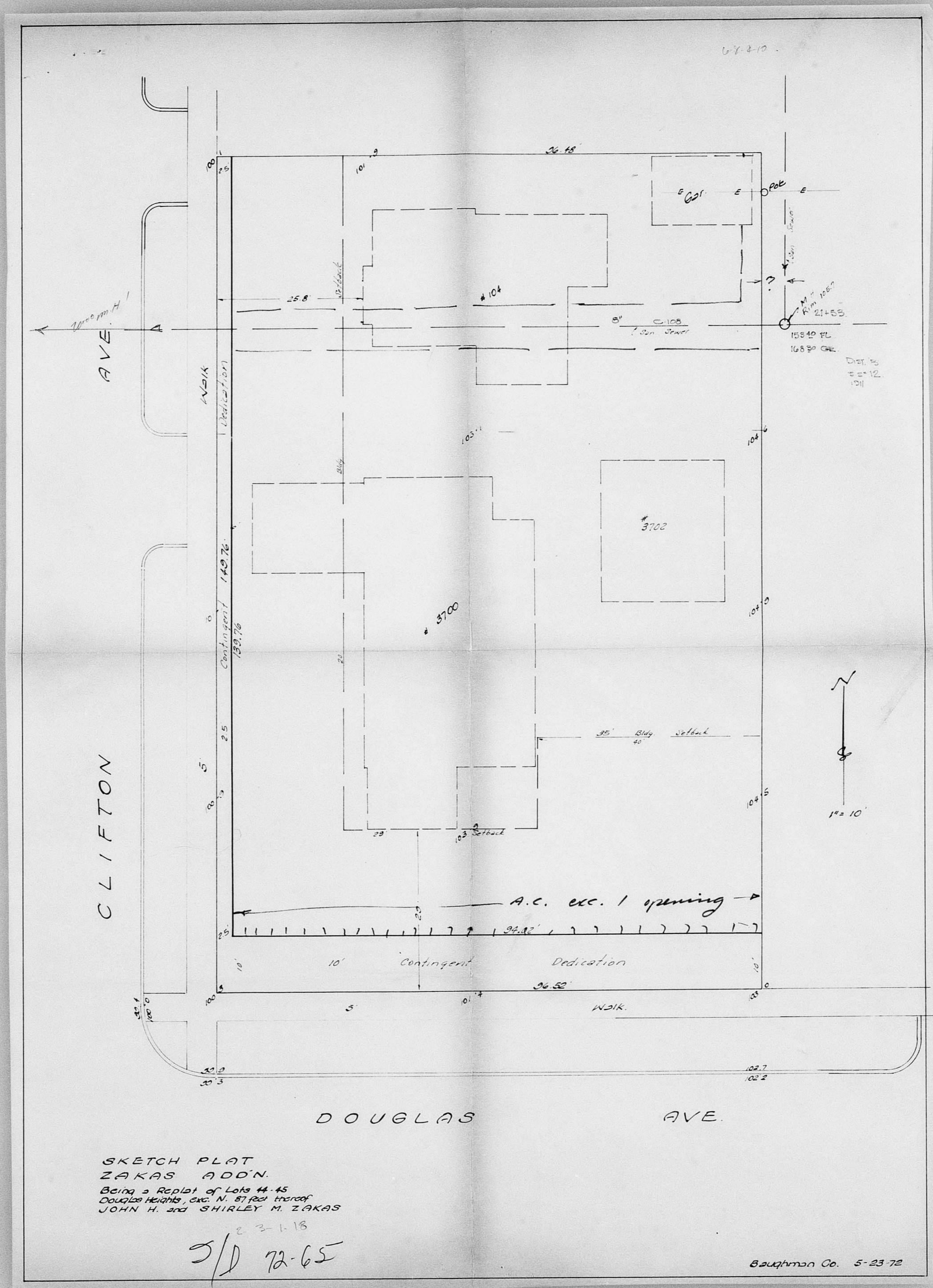
this _____ day of _____ 1972.
_____ County Clerk

State of Kansas) s.s. This is to certify that this plat
Sedwick County) was filed for record in the office of the Register of
Deeds, this _____ day of _____ 1972, at
o'clock _____ M., and is duly recorded.

_____ Register of Deeds
_____ Deputy



- SD 72-102
- Approval of the plat is subject to the approval of the associated zone area 2-1805 11-20-72. This plat of "ZAKAS SECOND ADDITION" Wichita, Kansas, has been submitted to and approved by the Wichita-Sedwick County Metropolitan Area Planning Commission, Wichita, Kansas, dated this _____ day of _____ 1972. Wichita-Sedwick County Metropolitan Area Planning Commission.
 - The corner angles shall be checked by the applicant surveyor as they do not close. _____ Secretary
 - The 6' utility easement indicated along the east line of the plat shall be increased to 10' in width. This plat approved and all dedications shown hereon accepted by the Board of Commissioners of the City of Wichita, Kansas, this _____ day of _____ 1972. _____ Mayor
 - A 15' building setback shall be indicated adjacent to the south line of Victor Place. _____ City Clerk
 - Contact the Engineering Division of the Department of Public Works and make satisfactory arrangements and guarantee for spacing of the utility driveway entrance on Victor Place. This plat approved and all dedications shown hereon accepted by the Board of Commissioners, Sedwick County, Kansas, this _____ day of _____ 1972. _____ Chairman
 - Recording of the plat within 30 days. _____ Commissioner
- Note: see letter dated 11-3-72
_____ CLM Commissioner
_____ County Clerk



SKETCH PLOT
 ZAKAS ADD'N
 Being a Replat of Lots 44-45
 Division Record, Cas. N. 87-104-10000
 JOHN H. and SHIRLEY M. ZAKAS

3/10 72-65

Baughman Co. 5-23-72