

K

FILMED FROM THE BEST
AVAILABLE COPY

exhibit 1

SD 73-3

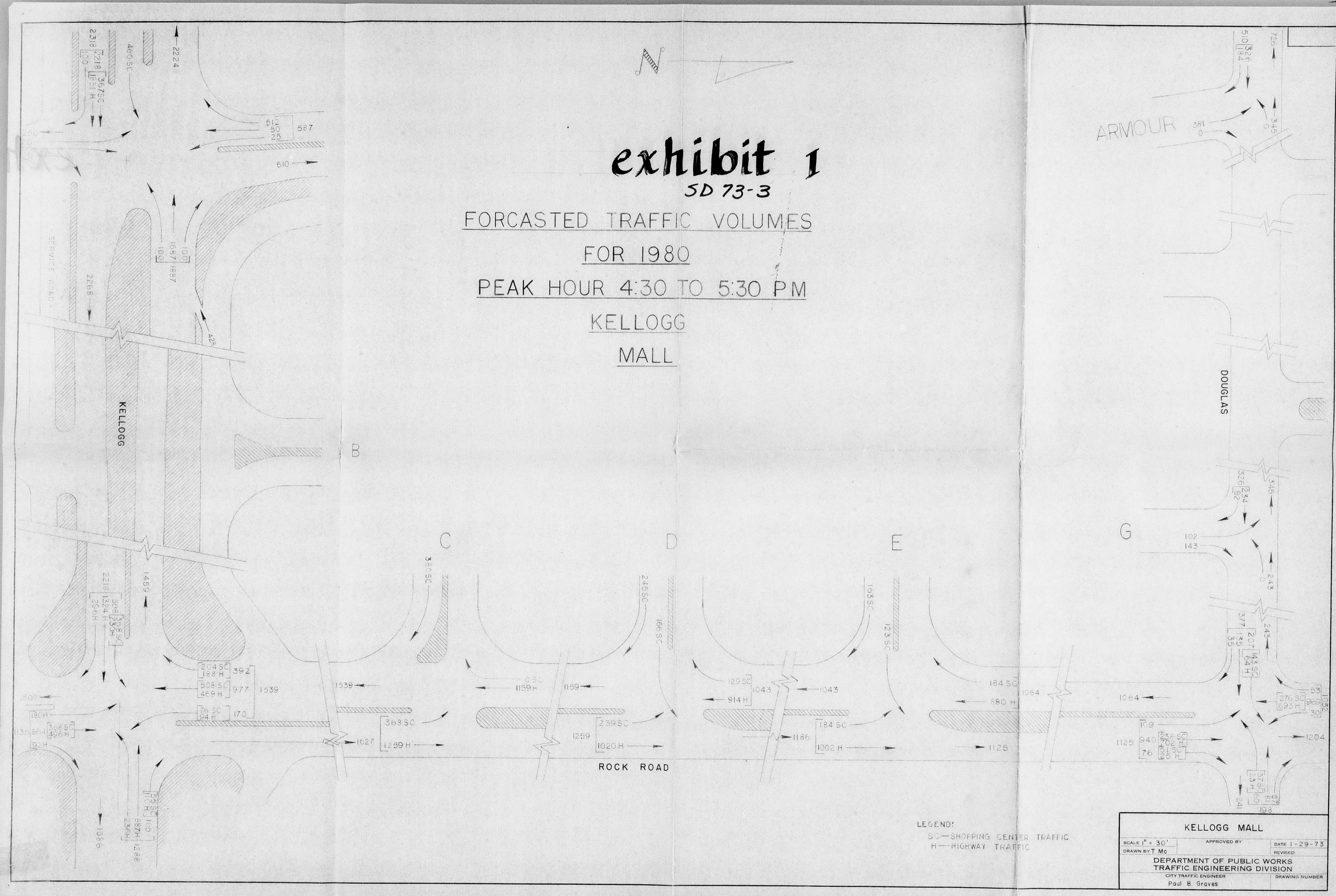
FORCASTED TRAFFIC VOLUMES

FOR 1980

PEAK HOUR 4:30 TO 5:30 PM

KELLOGG

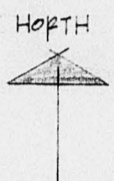
MALL



LEGEND:
SC—SHOPPING CENTER TRAFFIC
H—HIGHWAY TRAFFIC

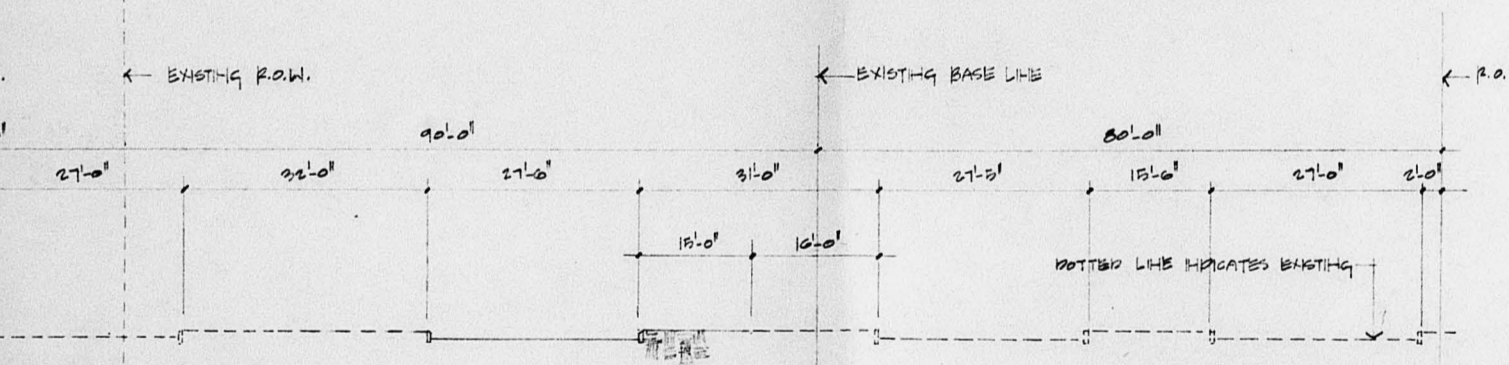
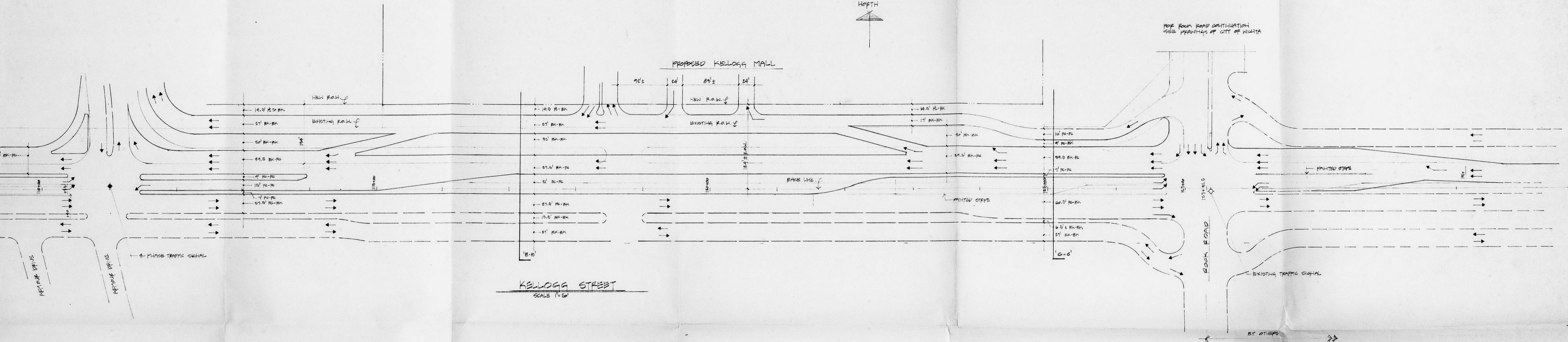
KELLOGG MALL	
SCALE 1" = 30'	APPROVED BY
DRAWN BY T. Mc	REVIEWED
DEPARTMENT OF PUBLIC WORKS	
TRAFFIC ENGINEERING DIVISION	
CITY TRAFFIC ENGINEER	DRAWING NUMBER
Paul B. Graves	

FILMED FROM THE BEST AVAILABLE COPY

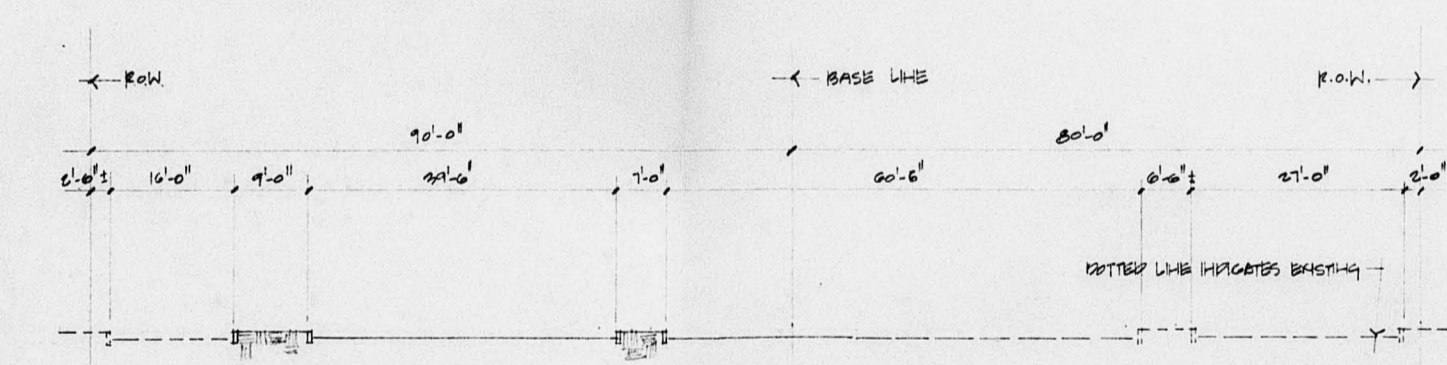


FOR ROAD LAMP CONTINUATION SEE PLANNING OF CITY OF MILWAUKEE

PROPOSED KELLOGG MALL



SECTION 'B-B'
STATION 152+0
SCALE 1/4\"/>



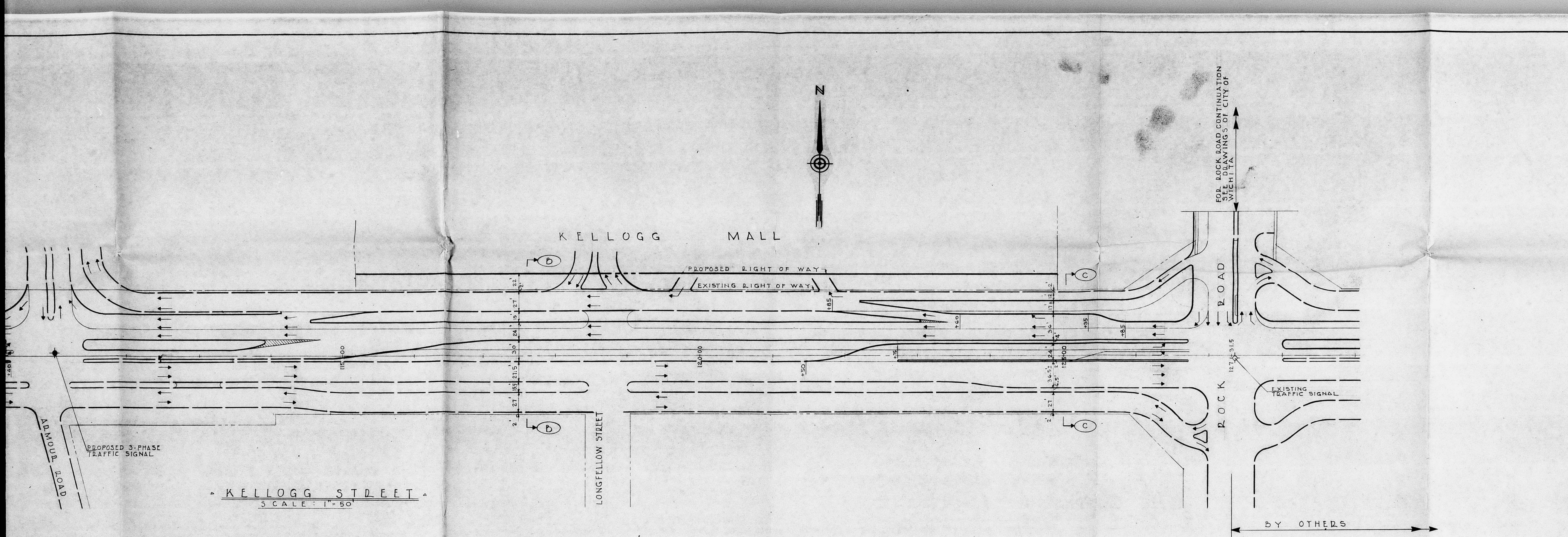
SECTION 'C-C'
STATION 152+0
SCALE 1/4\"/>

LEGEND

	PROPOSED CURB
	EXISTING CURB TO REMAIN
	EXISTING CURB TO BE RELOCATED

SD 73-3
THE LAW COMPANY, INC.
 PROPOSED KELLOGG AVE. (US-54)
 ARMOUR DRIVE TO ROCK ROAD
 DATE: 5/8/73
 Revised & submitted to Open as per
 Memorandum to RFL
 6-4-73

FILMED FROM THE BEST AVAILABLE COPY



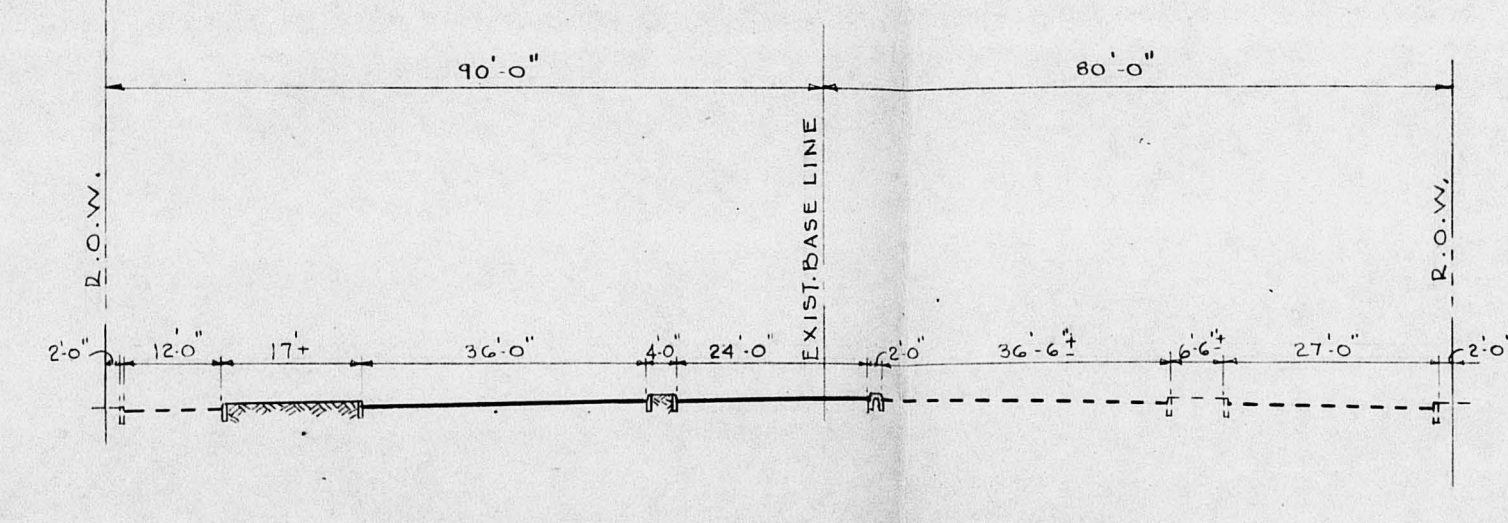
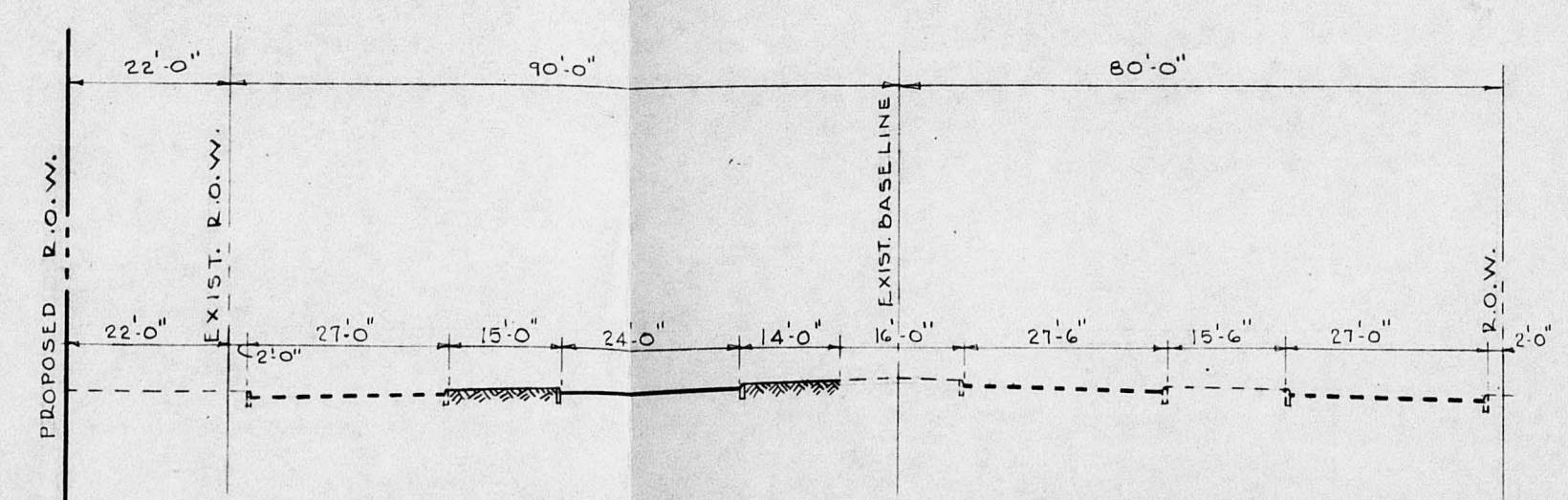
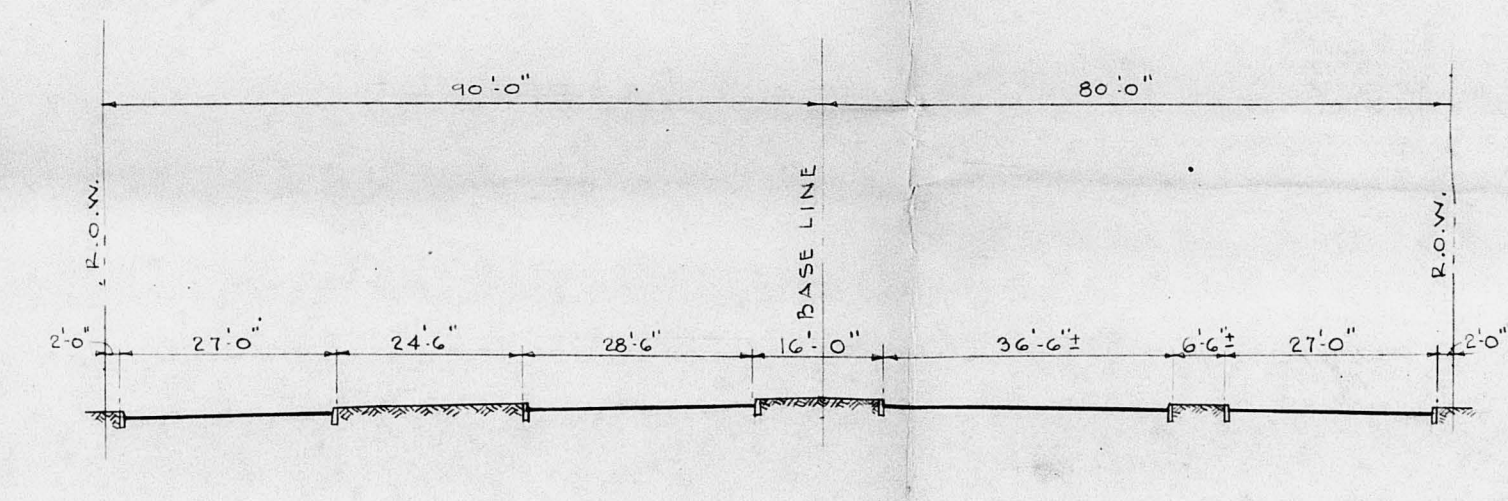
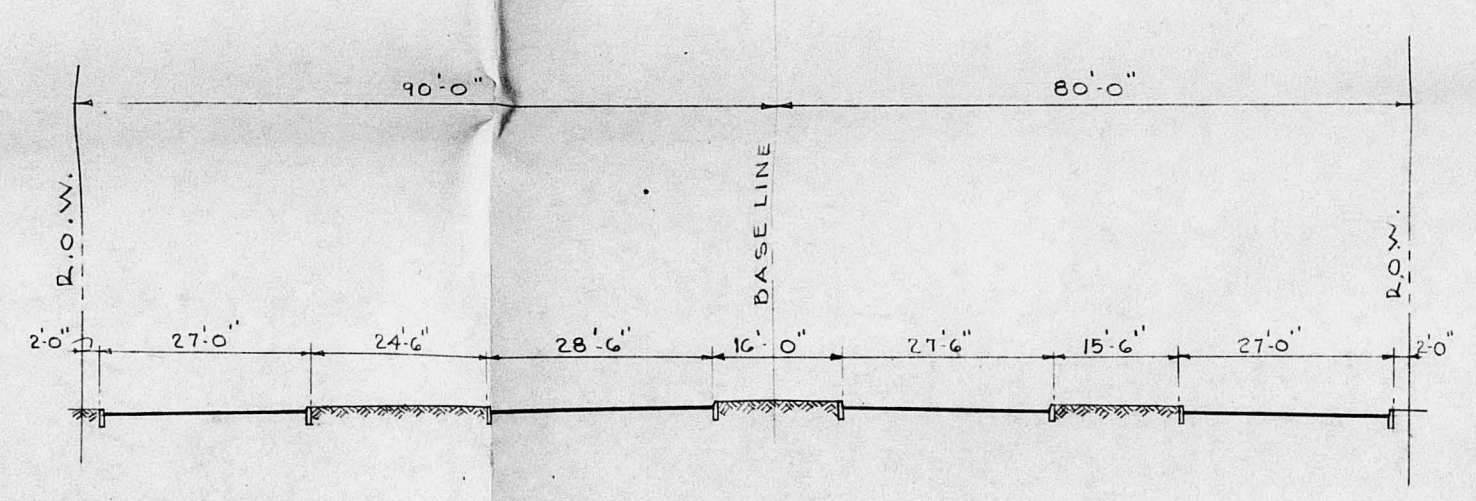
KELLOGG STREET
SCALE: 1" = 50'

LEGEND

--- EXISTING CURB TO BE REMOVED

==== EXISTING CURB TO REMAIN

==== PROPOSED CURB



REVISIONS		
NO.	DESCRIPTION	DATE

OFFICE COPY
DO NOT REMOVE

Kellogg Improvement

PLAN

BY

R. KEYS

WWD RECEIVED 4-16-73

CLN

SD 73-3

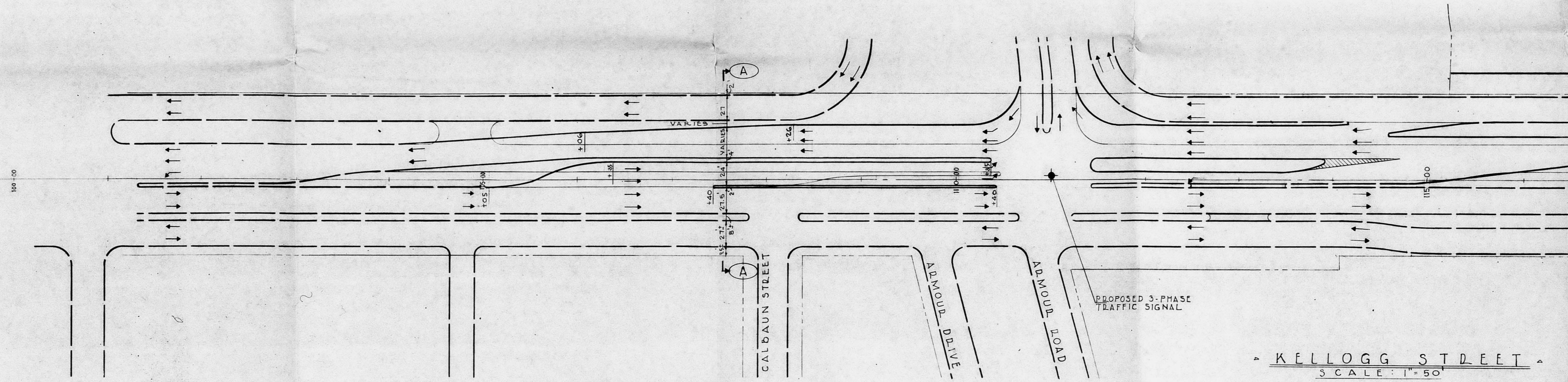
IMPROVEMENTS TO
KELLOGG STREET

PROJECT
KELLOGG MALL
WICHITA, KANSAS

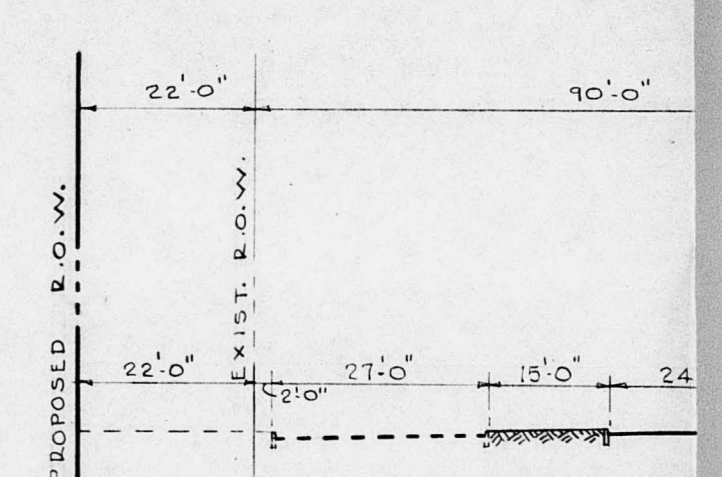
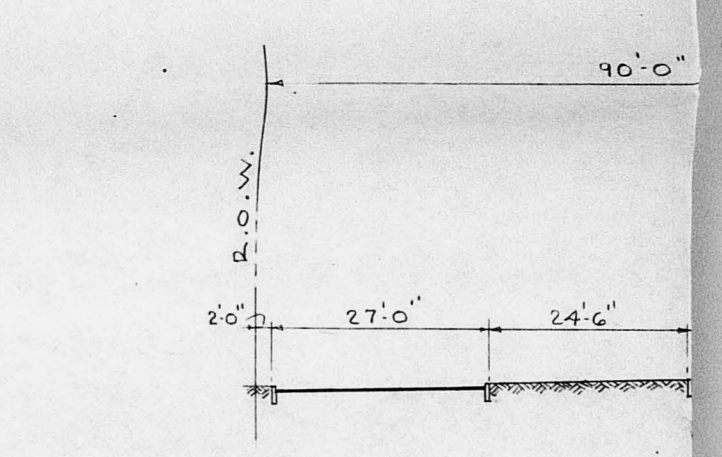
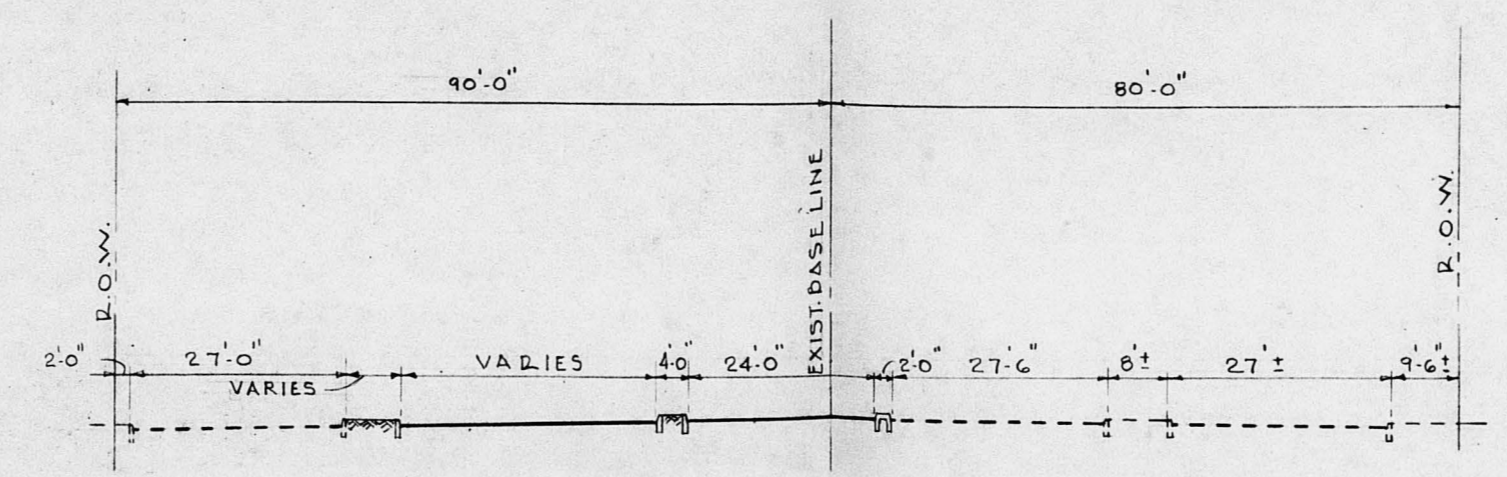
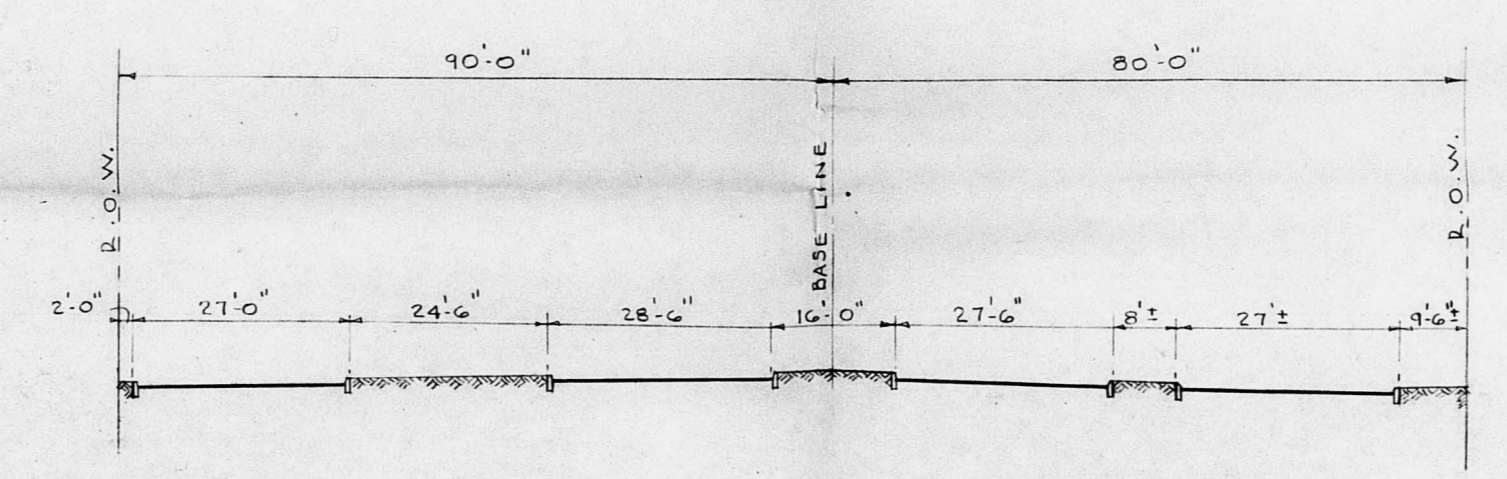
CLIENT
LAW COMPANY
313 SOUTH MARKET
WICHITA, KANSAS

ENGINEER
RAYMOND KEYS
ENGINEERS, P.C.
CONSULTING SITE ENGINEERS
44 EXECUTIVE BOULEVARD
ELMSFORD, NEW YORK 11003

THE LAW COMPANY	DATE	AS SHOWN
MARSHALLING DIV.	DATE	4-12-73
REC'D APR 10 1973	BY	CF
RS	RL	DATE
CB	JK	J.P.S.
KP	DW	DATE
RKS	GS	2-17
RD	INE	DATE
COPY		HP-1



KELLOGG STREET
SCALE: 1"=50'





SCALE 1"=100'
TOPO. JUNE '89

PRELIMINARY PLAT
KELLOGG MALL
CHRYSLER REALTY CORP

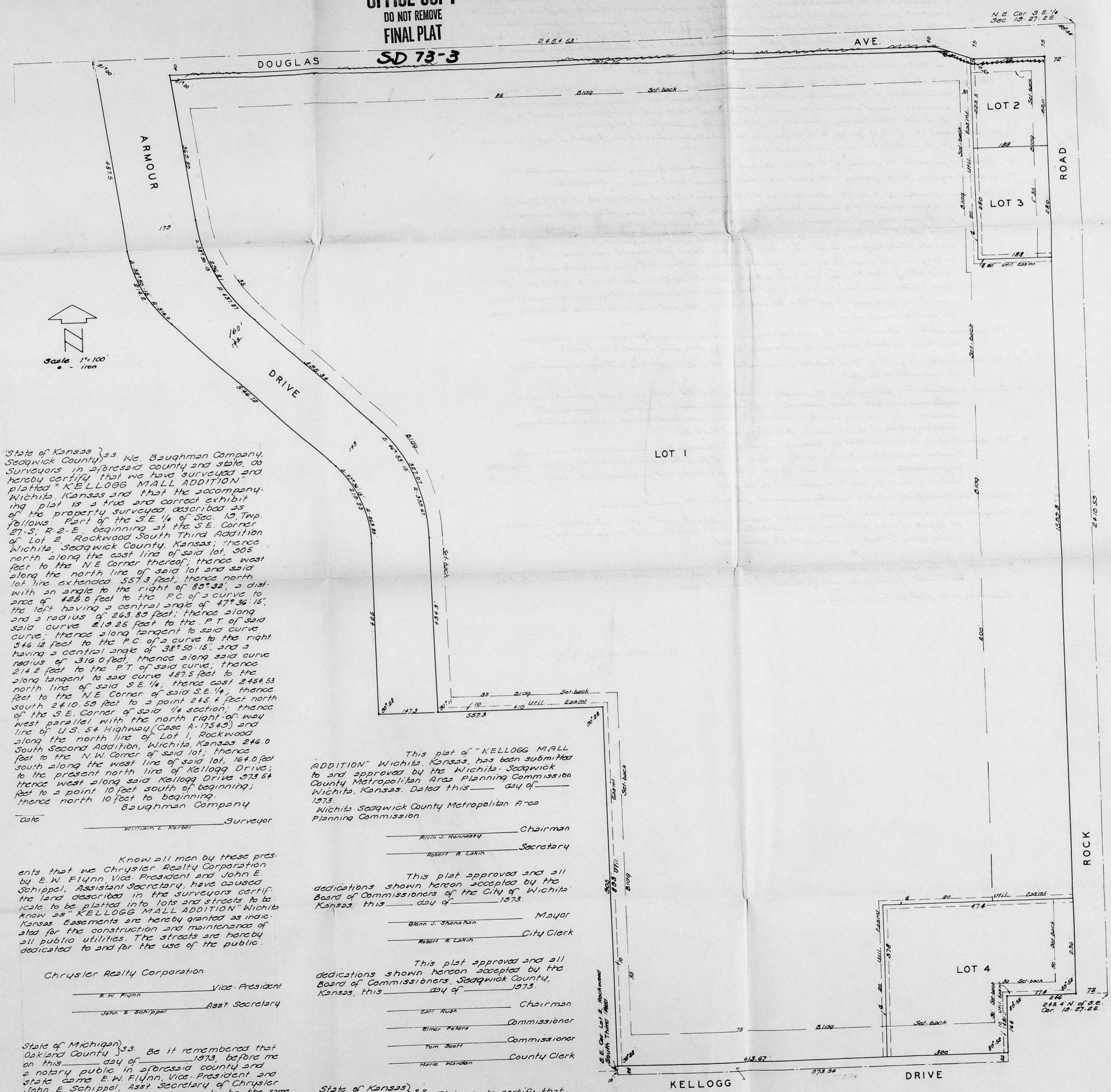
PRELIMINARY PLAT S/D 73-3
Approval subject to conditions
SEE BACK E. V. Yingling Jr.

OFFICE COPY
DO NOT REMOVE
SD 73-3

KELLOGG MALL ADDITION

OFFICE COPY
DO NOT REMOVE
FINAL PLAT

S/D 73-3 Approved subject to conditions on reverse side of this plat.



State of Kansas } ss. We, Baughman Company, Surveyors in and for said county and state, do hereby certify that we have surveyed and platted "KELLOGG MALL ADDITION" in Wichita, Kansas and that the accompanying plat is a true and correct exhibit of the property surveyed described as follows: Part of the S.E. 1/4 of Sec. 10, Twp. 27-S, R. 2-E beginning at the S.E. Corner of Lot 2, Rockwood South Third Addition, Wichita, Sedgwick County, Kansas; thence north along the east line of said lot 305 feet to the N.E. Corner thereof; thence west along the north line of said lot and said lot line extended 557.3 feet; thence north with an angle to the right of 80° 32' to a point 445.0 feet to the P.C. of a curve to the left having a central angle of 47° 36' 15", the left having a radius of 263.80 feet; thence along said curve 219.25 feet to the P.T. of said curve; thence along tangent to said curve 546.12 feet to the P.C. of a curve to the right having a central angle of 38° 50' 15", and a radius of 316.0 feet; thence along said curve 214.2 feet to the P.T. of said curve; thence along tangent to said curve 487.5 feet to the north line of said S.E. 1/4; thence east 245.4 feet to a point 245.4 feet north of the S.E. Corner of said S.E. 1/4 section; thence west parallel with the north right of way line of U.S. 54 Highway (Case A-17543) and along the north line of Lot 1, Rockwood South Second Addition, Wichita, Kansas 245.0 feet to the N.W. Corner of said lot; thence south along the west line of Kellogg Drive to the present north line of Kellogg Drive; thence west along said Kellogg Drive 373.54 feet to a point 10 feet south of beginning; thence north 10 feet to beginning.

Baughman Company
Date _____ Surveyor

Know all men by these presents that we Chrysler Realty Corporation by E.W. Flynn, Vice President and John E. Schippel, Assistant Secretary, have caused the land described in the surveyors certificate to be platted into lots and streets to be known as "KELLOGG MALL ADDITION" in Wichita, Kansas. Easements are hereby granted as noted also for the construction and maintenance of all public utilities. The streets are hereby dedicated to and for the use of the public.

Chrysler Realty Corporation
E.W. Flynn Vice President
John E. Schippel Asst. Secretary

State of Michigan } ss. Be it remembered that on this _____ day of _____ 1973, before me a notary public in and for said county and state came E.W. Flynn, Vice President and John E. Schippel, Asst. Secretary of Chrysler Realty Corporation, to me known to be the same persons who executed the foregoing instrument of writing and duly acknowledged the execution of the same. In testimony whereof I have hereunto set my hand and affixed my notarial seal the day and year above written.

Notary Public
My Comm. Exp. _____

This plat of "KELLOGG MALL ADDITION" in Wichita, Kansas, has been submitted to and approved by the Wichita-Sedgwick County Metropolitan Area Planning Commission, Wichita, Kansas, dated this _____ day of _____ 1973.

Wichita Sedgwick County Metropolitan Area Planning Commission

Chairman

Secretary

This plat approved and all dedications shown hereon accepted by the Board of Commissioners of the City of Wichita, Kansas, this _____ day of _____ 1973.

Mayor

City Clerk

This plat approved and all dedications shown hereon accepted by the Board of Commissioners, Sedgwick County, Kansas, this _____ day of _____ 1973.

Chairman

Commissioner

Commissioner

County Clerk

State of Kansas } ss. This is to certify that Sedgwick County, ss. This plat was filed for record in the office of the Register of Deeds this _____ day of _____ 1973, at _____ o'clock _____ M, and is duly recorded.

Register of Deeds

Deputy

Entered on transfer records this _____ day of _____ 1973

County Clerk