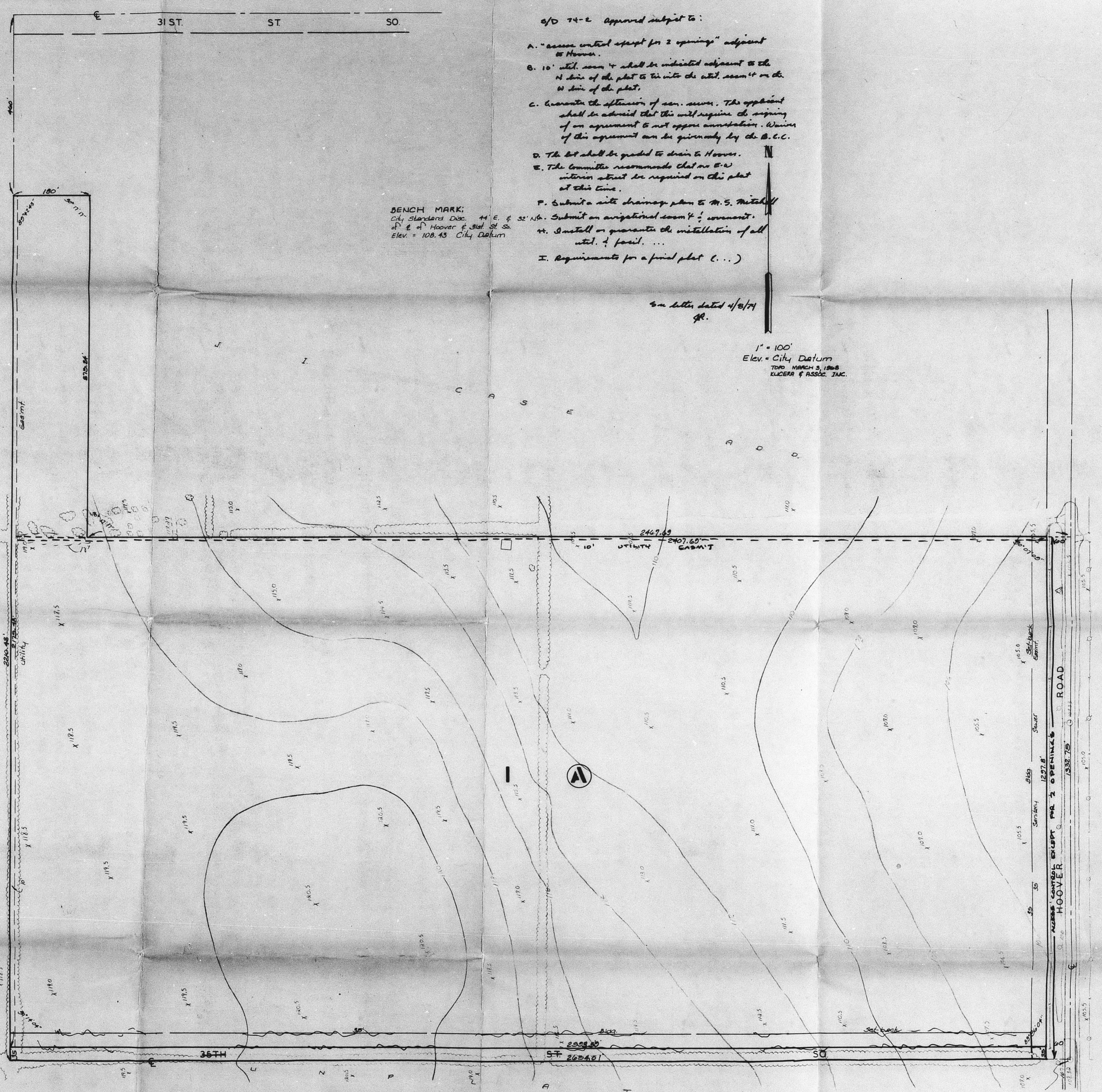


E

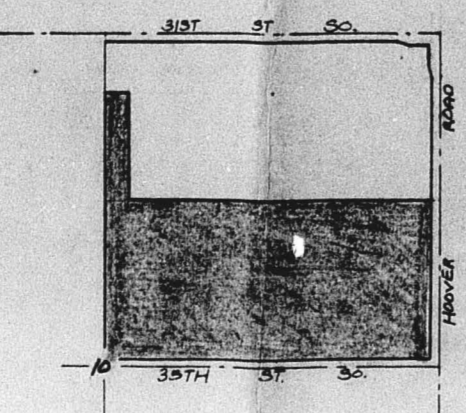


- S/D 74-2 Approved subject to:
- "Access control except for 3 openings" adjacent to Hoover.
  - 10' utility easement shall be indicated adjacent to the N line of the plot to the utility easement on the W line of the plot.
  - Consent the extension of sewer. The applicant shall be advised that this will require the signing of an agreement to not oppose cancellation. Waiver of this agreement can be given only by the B.C.C.
  - The lot shall be graded to drain to Hoover.
  - The Committee recommends that no E-W utility easement be required on this plot at this time.
  - Submit a site drainage plan to Mr. S. Mitchell.
  - Submit an arroyo/drain down % of easement.
  - Install or guarantee the installation of all utility & facil. ....
  - Requirements for a final plat (...)

BENCH MARK:  
City Standard Doc. 44 E. & 35' N. of Hoover & 31st St. S.  
Elev. = 108.43 City Datum

See letter dated 4/25/74  
gr.

1" = 100'  
Elev. = City Datum  
TODD MARCH 3, 1968  
LUCAS & ASSOC. INC.



VICINITY PLAT  
1" = 1000'

PRELIMINARY PLAT  
**EBY INDUSTRIAL 2ND ADD'N.**

The SW 1/4 of NE 1/4 10-28-1W & the W 100' of the S. 875.24' of the NE 1/4 of said NE 1/4  
EBY CONST. CO.

OFFICE COPY  
DO NOT REMOVE

PRELIMINARY PLAT

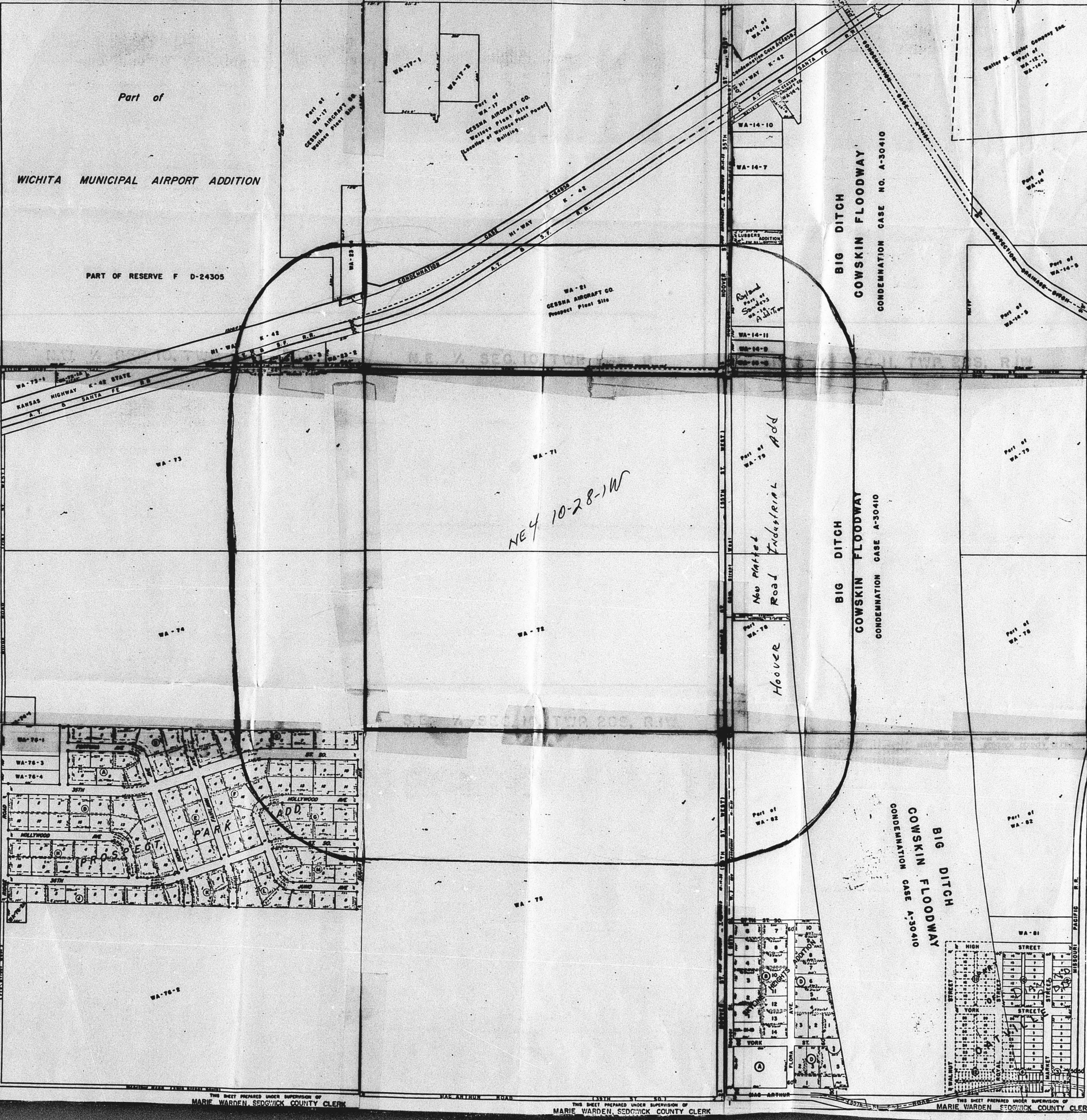
S/D 74-2  
S/D 74-2

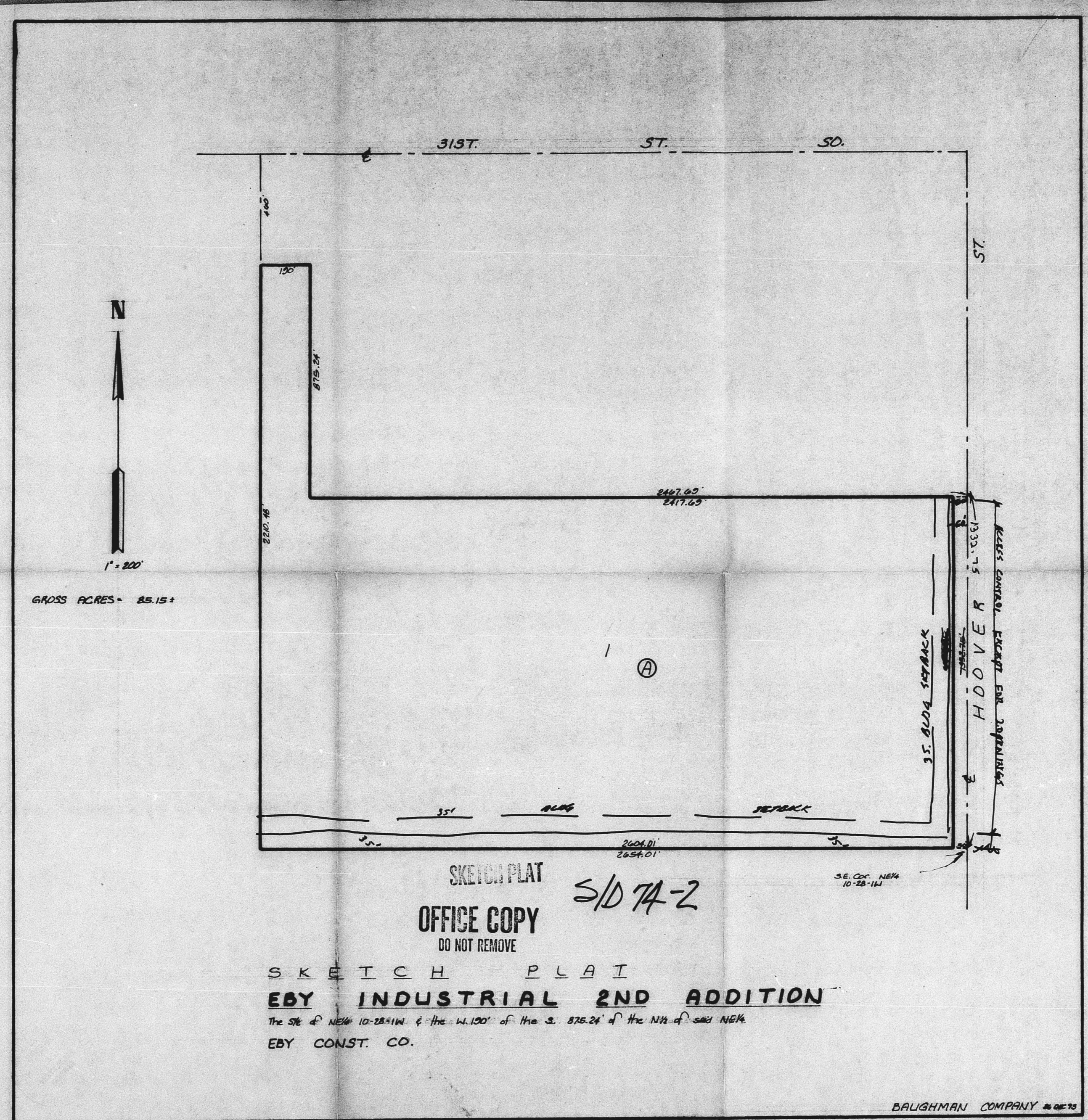
SID 74-2

S.W. 1/4 SEC. 3, TWP. 20S, R.1W.

S.E. 1/4 SEC. 3, TWP. 20S, R.1W.

S.W. 1/4 SEC. 2, TWP. 20S, R.1W.



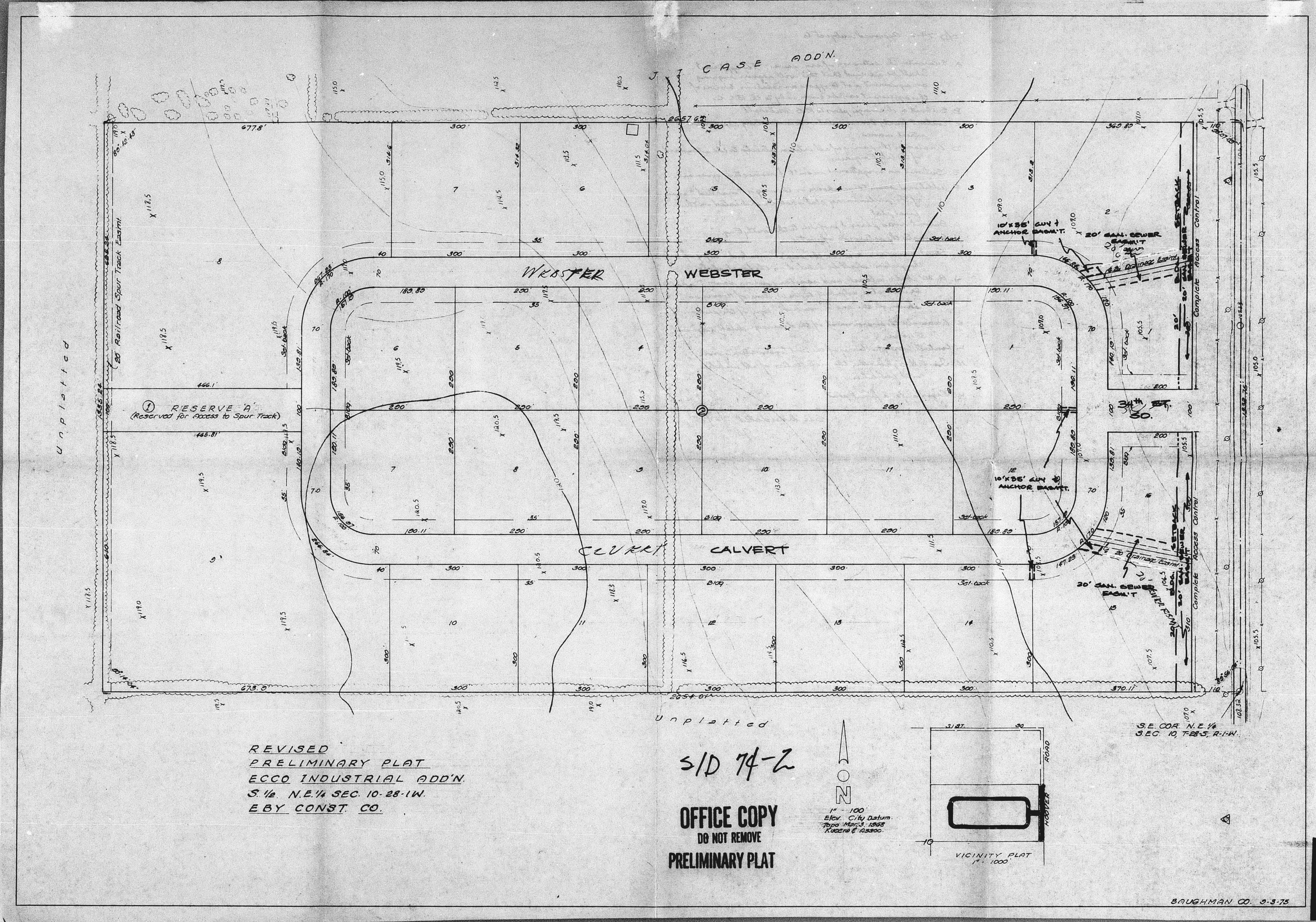


GRASS ACRES = 85.15 ±

SKETCH PLAT  
 OFFICE COPY  
 DO NOT REMOVE  
 S/D 7A-2

SKETCH PLAT  
**EBY INDUSTRIAL 2ND ADDITION**  
 The SW 1/4 NE 1/4 10-28-11W & the W 1/2 of the S. 875.24' of the NW 1/4 of said NE 1/4  
 EBY CONST. CO.

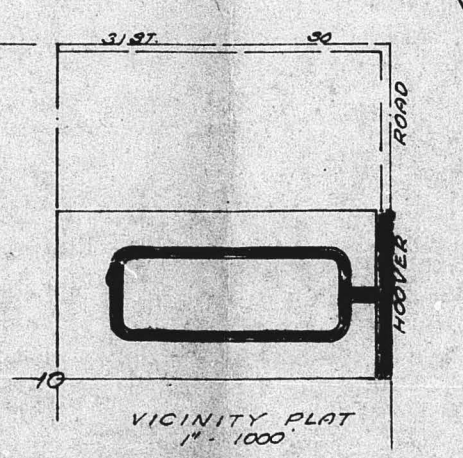
BAUGHMAN COMPANY 20 02 70



REVISED  
 PRELIMINARY PLAT  
 ECCO INDUSTRIAL ADDN.  
 S 1/4 N.E. 1/4 SEC. 10-28-1W.  
 EBY CONST. CO.

S/D 74-2  
 OFFICE COPY  
 DO NOT REMOVE  
 PRELIMINARY PLAT

1" = 100'  
 Eby City Datum  
 Rep'd March 1962  
 Record # 62400



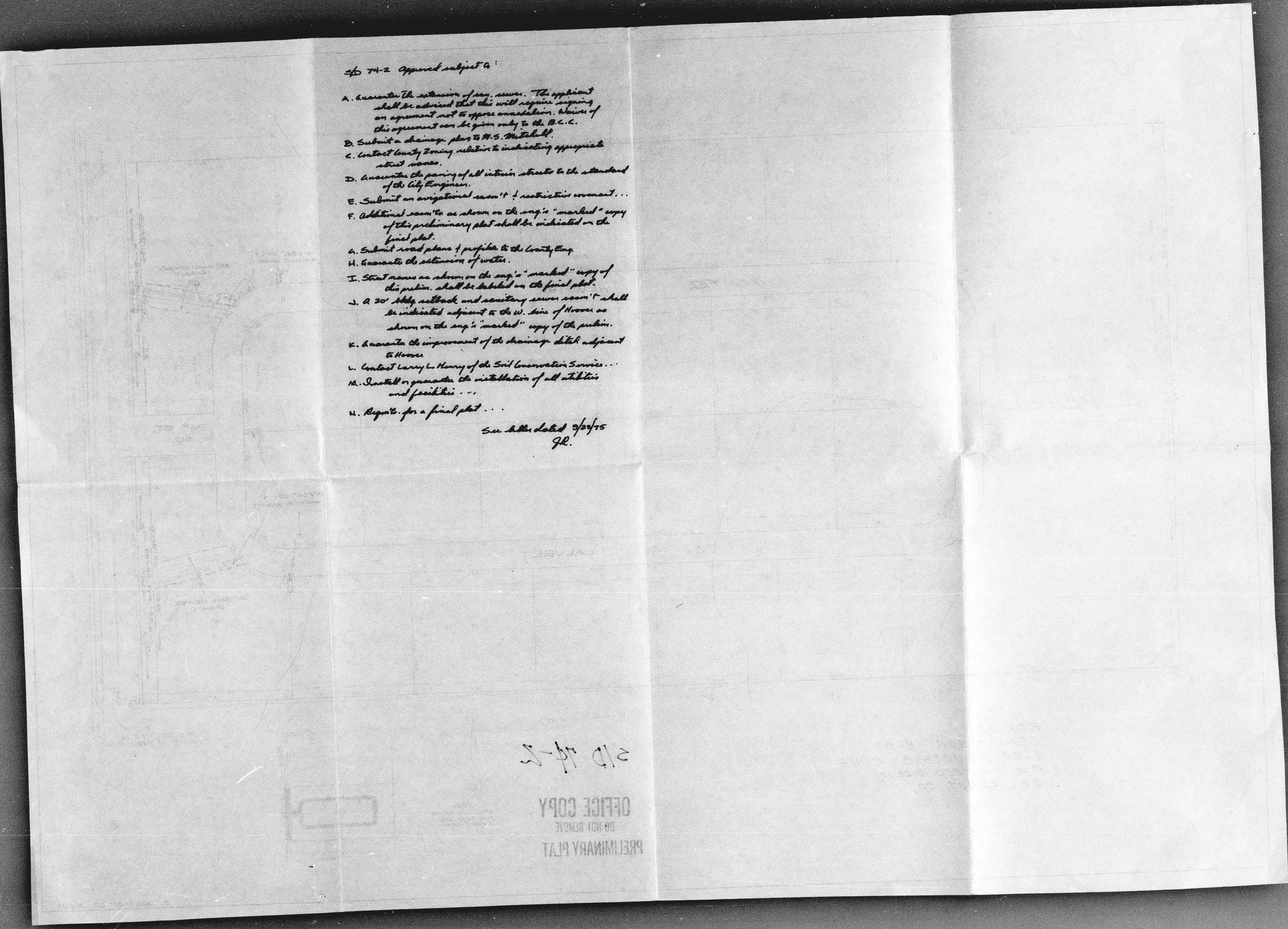
SE COR N.E. 1/4  
 SEC. 10, T88S, R.14W.

BAUGHMAN CO. 3-3-75

40 74-2 Approved subject to:

- A. Guarantee the extension of sewer. The applicant shall be advised that this will require signing an agreement with the appropriate authority. Review of this agreement can be given only to the B.C.C.
- B. Submit a drainage plan to H.S. Mitchell.
- C. Contact County zoning relative to indicating appropriate street names.
- D. Guarantee the paving of all interior streets to the standard of the City Engineer.
- E. Submit an arroyo/road section of a restrictive covenant...
- F. Additional section as shown on the eng's "marked" copy of the preliminary plat shall be indicated on the final plat.
- G. Submit road plans & profiles to the County Eng.
- H. Guarantee the extension of water.
- I. Street names as shown on the eng's "marked" copy of the plan, shall be labeled on the final plat.
- J. A 20' side setback and sanitary sewer section shall be indicated adjacent to the W. line of House as shown on the eng's "marked" copy of the plan.
- K. Guarantee the improvement of the drainage ditch adjacent to House.
- L. Contact Larry L. Henry of the Soil Conservation Service...
- M. Install or guarantee the installation of all utilities and facilities...
- N. Report for a final plat...

See letter dated 9/27/75  
JL.



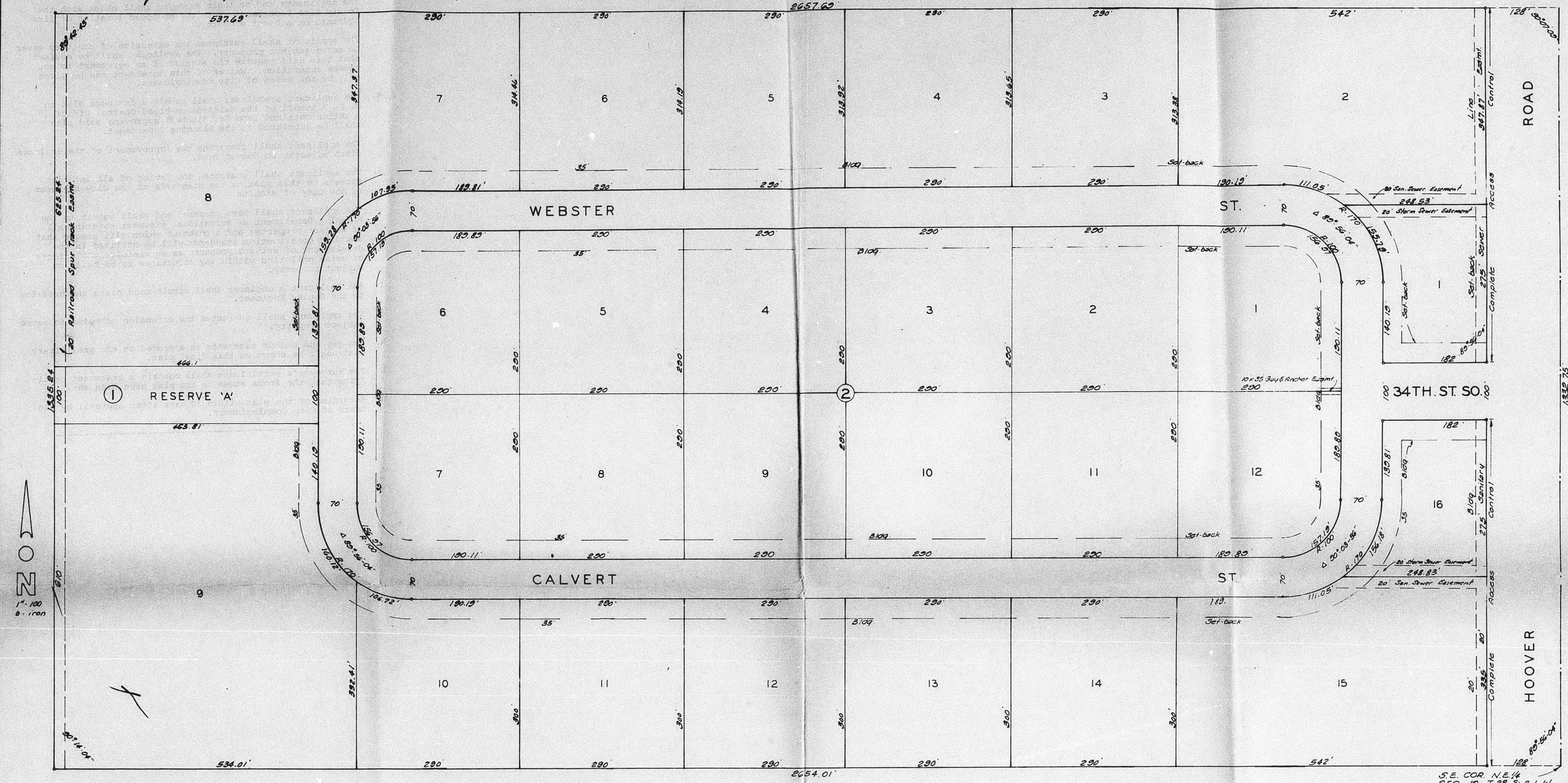
210 74-2

OFFICE COPY  
DO NOT REMOVE  
PRELIMINARY PLAT

OFFICE COPY  
DO NOT REMOVE  
FINAL PLAT

S/D 74-2

ECCO INDUSTRIAL ADDITION  
SEDGWICK COUNTY KANSAS



State of Kansas) ss We, Baughman Company, Surveyors in and for Sedgwick County, Kansas, do hereby certify that we have surveyed and plotted "ECCO INDUSTRIAL ADDITION" Sedgwick County, Kansas, and that the accompanying plat is a true and correct exhibit of the property surveyed described as the South one-half of the N.E. 1/4 of Sec. 10, T-28-S; R-1-W.

Baughman Company  
Surveyor

Know all men by these presents that we, Martin K. Eby Construction Co. Inc. a corporation by Martin K. Eby Jr., President and James R. Brier III, Executive Vice-President, have caused the land described in the surveyors certificate to be platted into blocks, lots and streets, and a Reserve to be known as "ECCO INDUSTRIAL ADDITION" Sedgwick County, Kansas. The Reserve is reserved for access from lots to the spur track. Easements are hereby granted as indicated for gas and anchor, sanitary sewer construction and maintenance, and for drainage. The streets are hereby dedicated to and for the use of the public. All abutters rights of access to or from Hoover over and across the east lines of lot 1 and 2 and 13 and 14, Block 1 are hereby granted the appropriate governing body.

Martin K. Eby Construction Co. Inc.  
Martin K. Eby Jr. President  
James R. Brier III Exec. Vice-President

State of Kansas) ss Be it remembered that on this day of 197, before me a notary public in aforesaid county and state came Martin K. Eby Jr., President and James R. Brier III, Executive Vice-President of Martin K. Eby Construction Co. Inc., to me known to be the same persons who executed the foregoing instrument of writing and duly acknowledged the execution of the same. In testimony whereof I have hereunto set my hand and affixed my notarial seal the day and year above written.

My Comm. Exp. \_\_\_\_\_ Notary Public

This plat of "ECCO INDUSTRIAL ADDITION" Sedgwick County, Kansas has been submitted to and approved by the Wichita-Sedgwick County Metropolitan Area Planning Commission, Wichita, Kansas, dated this day of 197.

Wichita-Sedgwick County Metropolitan Area Planning Commission.  
Chairman  
Secretary  
Entered on transfer record this day of 197.  
County Clerk

This plat approved and all dedications shown hereon accepted by the Board of Commissioners of the City of Wichita, Kansas, this day of 197.

Mayor  
City Clerk

This plat approved and all dedications shown hereon accepted by the Board of Commissioners of Sedgwick County, Kansas, this day of 197.

Chairman  
Commissioner  
Commissioner  
County Clerk

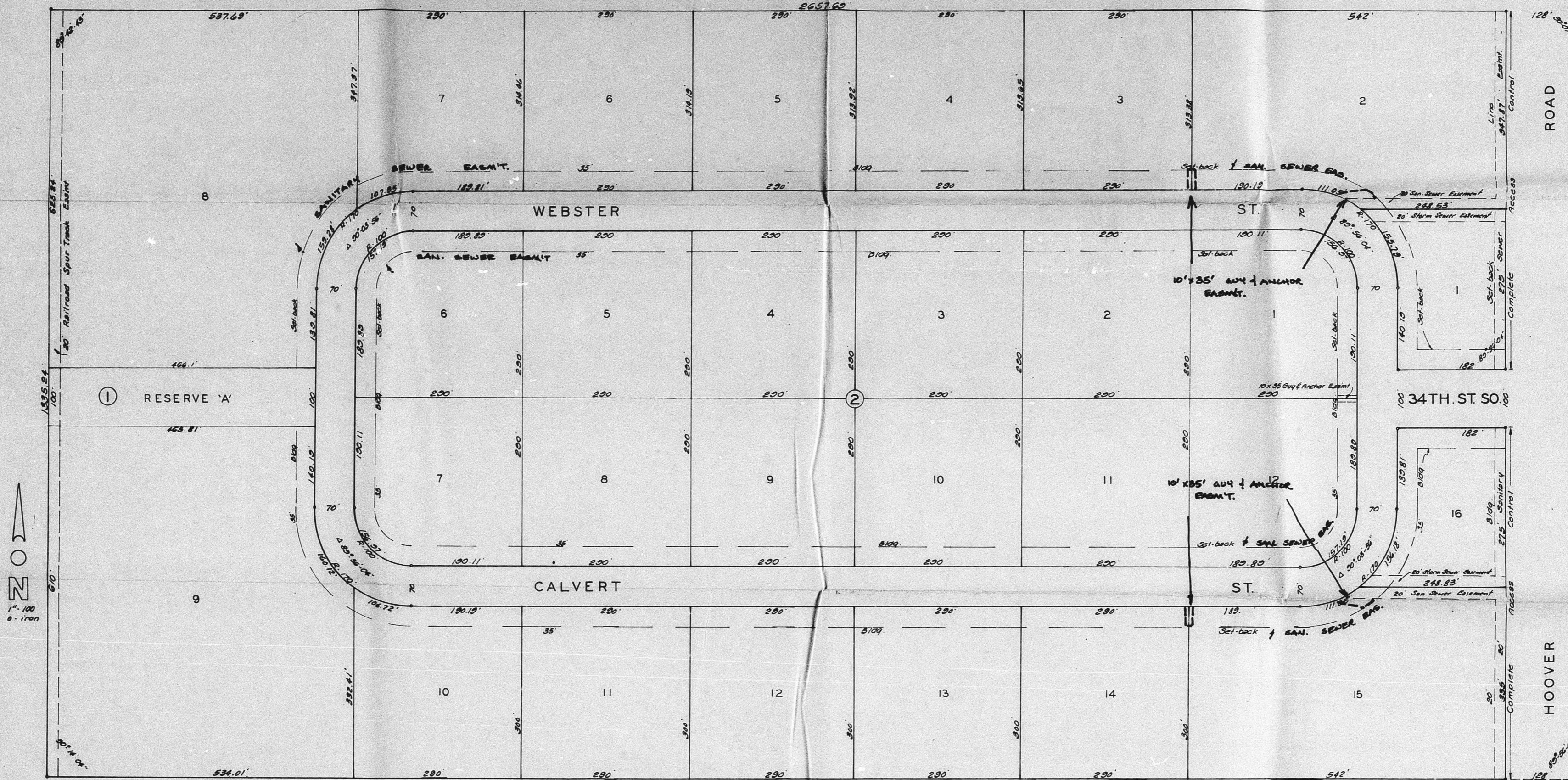
State of Kansas) ss This is to certify that this plat was filed for record in the office of the Register of Deeds this day of 197, at o'clock M, and is duly recorded.

Register of Deeds  
Deputy

40 74-2 Approved subject to conditions as set forth in letter dated 7/17/70

S/D 74-2

**ECCO INDUSTRIAL ADDITION**  
**OFFICE COPY** SEDGWICK COUNTY KANSAS  
**DO NOT REMOVE** **FINAL PLAT**



State of Kansas) ss. We, Baughman Company, Surveyors in and for Sedgwick County, Kansas, do hereby certify that we have surveyed and plotted "ECCO INDUSTRIAL ADDITION" Sedgwick County, Kansas, and that the accompanying plat is a true and correct exhibit of the property surveyed described as the South one-half of the N.E. 1/4 of Sec. 10, T-28-S, R-1-W.

Baughman Company  
 William L. Kerber, Surveyor

Know all men by these presents that we, Martin K. Eby Construction Co. Inc. a corporation by Martin K. Eby Jr. President and James R. Brier III, Executive Vice-President, have caused the land described in the surveyors certificate to be plotted into blocks, lots and streets, and a Reserve to be known as "ECCO INDUSTRIAL ADDITION" Sedgwick County, Kansas. The Reserve is reserved for access from lots to the spur track. Easements are hereby granted as indicated for gas and water, sanitary sewer construction and maintenance, and for drainage. The streets are hereby dedicated to and for the use of the public. All abutters rights of access to or from Hoover St. and across the east lines of lot 1 and 2 and 15 and 16, Block 1 are hereby granted the appropriate governing body.

Martin K. Eby Construction Co. Inc.  
 Martin K. Eby Jr., President  
 James R. Brier III, Exec. Vice-President

State of Kansas) ss. Be it remembered that on this \_\_\_\_\_ day of \_\_\_\_\_ 197\_\_\_\_, before me a Notary Public in and for said county and state came Martin K. Eby Jr., President and James R. Brier III, Executive Vice-President of Martin K. Eby Construction Co. Inc., to me known to be the same persons who executed the foregoing instrument of writing and duly acknowledged the execution of the same. In testimony whereof I have hereunto set my hand and affixed my notarial seal the day and year above written.

My Comm. Exp. \_\_\_\_\_ Notary Public

This plat of "ECCO INDUSTRIAL ADDITION" Sedgwick County, Kansas, has been submitted to and approved by the Wichita-Sedgwick County Metropolitan Area Planning Commission, Wichita, Kansas. Dated this \_\_\_\_\_ day of \_\_\_\_\_ 197\_\_\_\_.

Wichita, Sedgwick County Metropolitan Area Planning Commission.  
 David Baughman, Chairman  
 Robert A. Larkin, Secretary  
 George Peros, County Clerk

Entered on transfer record this \_\_\_\_\_ day of \_\_\_\_\_ 197\_\_\_\_.

This plat approved and all dedications shown hereon accepted by the Board of Commissioners of the City of Wichita, Kansas, this \_\_\_\_\_ day of \_\_\_\_\_ 197\_\_\_\_.

Connie A. Peters, Mayor  
 Donald C. Winkler, City Clerk

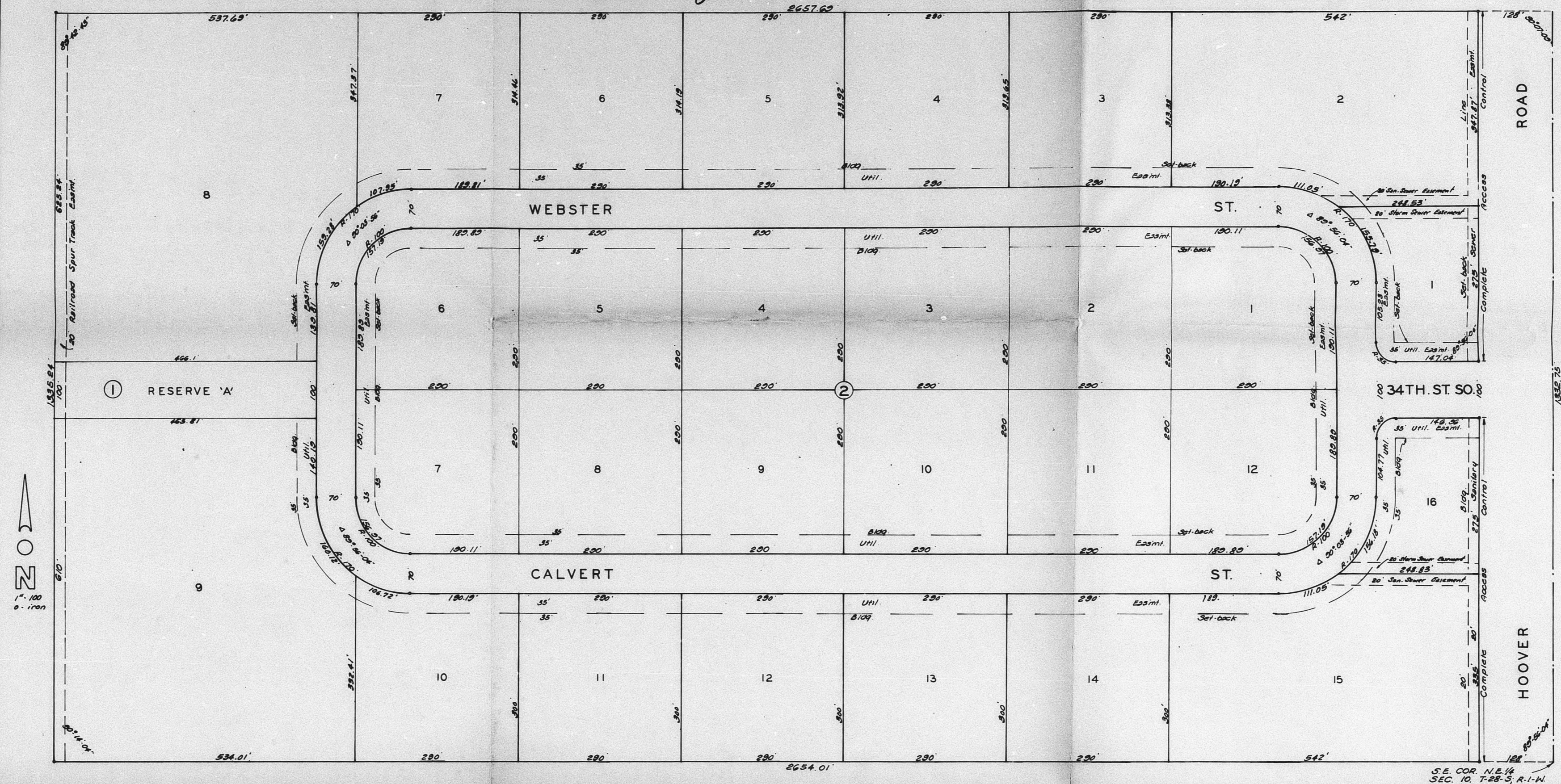
This plat approved and all dedications shown hereon accepted by the Board of Commissioners of Sedgwick County, Kansas, this \_\_\_\_\_ day of \_\_\_\_\_ 197\_\_\_\_.

Earl Rubin, Chairman  
 John Hise, Commissioner  
 Tom Scott, Commissioner  
 George Peros, County Clerk

State of Kansas) ss. This is to certify that this plat was filed for record in the office of the Register of Deeds this \_\_\_\_\_ day of \_\_\_\_\_ 197\_\_\_\_ at \_\_\_\_\_ o'clock \_\_\_\_\_ M., and is duly recorded.

Walter F. McCarty, Register of Deeds  
 Jim Reiter, Deputy

S/D 74-2  
 APPROVED FOR RECORDING COPY  
 DEAD - FILE  
**ECCO INDUSTRIAL ADDITION**  
 SEDGWICK COUNTY KANSAS  
 RECORDED ON May 17, 1976



State of Kansas) ss. We, Baughman Company, Surveyors in and for Sedgwick County, Kansas, do hereby certify that we have surveyed and plotted "ECCO INDUSTRIAL ADDITION" Sedgwick County, Kansas, and that the accompanying plat is a true and correct exhibit of the property surveyed described as the south one-half of the N.E. 1/4 of Sec. 10, T-28-S, R-11-W.

Baughman Company  
 William L. Forster, Surveyor

Know all men by these presents that we, Martin K. Eby Construction Co. Inc., a corporation by Martin K. Eby Jr., President and James R. Briar III, Executive Vice-President, have caused the land described in the surveyors certificate to be platted into blocks, lots and streets, and a Reserve to be known as "ECCO INDUSTRIAL ADDITION" Sedgwick County, Kansas. The Reserve is reserved for access from lots to the spur track. Easements are hereby granted as indicated for all utilities, sanitary sewer construction and maintenance, and for drainage. The streets are hereby dedicated to and for the use of the public. All abutters rights of access to or from Hoover over and across the east lines of lot 1 and 2 and 15 and 16, Block 1 are hereby granted the appropriate governing body.

Martin K. Eby Construction Co. Inc.  
 Martin K. Eby Jr., President  
 James R. Briar III, Exec. Vice-President

State of Kansas) ss. I, \_\_\_\_\_, Notary Public, do hereby certify that on this \_\_\_\_\_ day of \_\_\_\_\_, 1976, before me a notary public in and for Sedgwick County and State of Kansas, Martin K. Eby Jr., President and James R. Briar III, Executive Vice-President of Martin K. Eby Construction Co. Inc., to me known to be the same persons who executed the foregoing instrument of writing and duly acknowledged the execution of the same. In testimony whereof I have hereunto set my hand and affixed my notarial seal the day and year above written.

\_\_\_\_\_, Notary Public  
 My Comm. Exp. March 3, 1977

This plat of "ECCO INDUSTRIAL ADDITION" Sedgwick County, Kansas has been submitted to and approved by the Wichita-Sedgwick County Metropolitan Area Planning Commission, Wichita, Kansas. Dated this \_\_\_\_\_ day of \_\_\_\_\_, 1976.

\_\_\_\_\_, Chairman  
 \_\_\_\_\_, Secretary

Entered on transfer record this \_\_\_\_\_ day of \_\_\_\_\_, 1976.

\_\_\_\_\_, County Clerk

This plat approved and all dedications shown hereon accepted by the Board of Commissioners of the City of Wichita, Kansas, this \_\_\_\_\_ day of \_\_\_\_\_, 1976.

\_\_\_\_\_, Mayor  
 \_\_\_\_\_, City Clerk

This plat approved and all dedications shown hereon accepted by the Board of Commissioners of Sedgwick County, Kansas, this \_\_\_\_\_ day of \_\_\_\_\_, 1976.

\_\_\_\_\_, Chairman  
 \_\_\_\_\_, Commissioner  
 \_\_\_\_\_, Commissioner  
 \_\_\_\_\_, County Clerk

State of Kansas) ss. This is to certify that this plat was filed for record in the office of the Register of Deeds this \_\_\_\_\_ day of \_\_\_\_\_, 1976, at \_\_\_\_\_ o'clock \_\_\_\_\_ M., and is duly recorded.

\_\_\_\_\_, Register of Deeds  
 \_\_\_\_\_, Deputy