

R

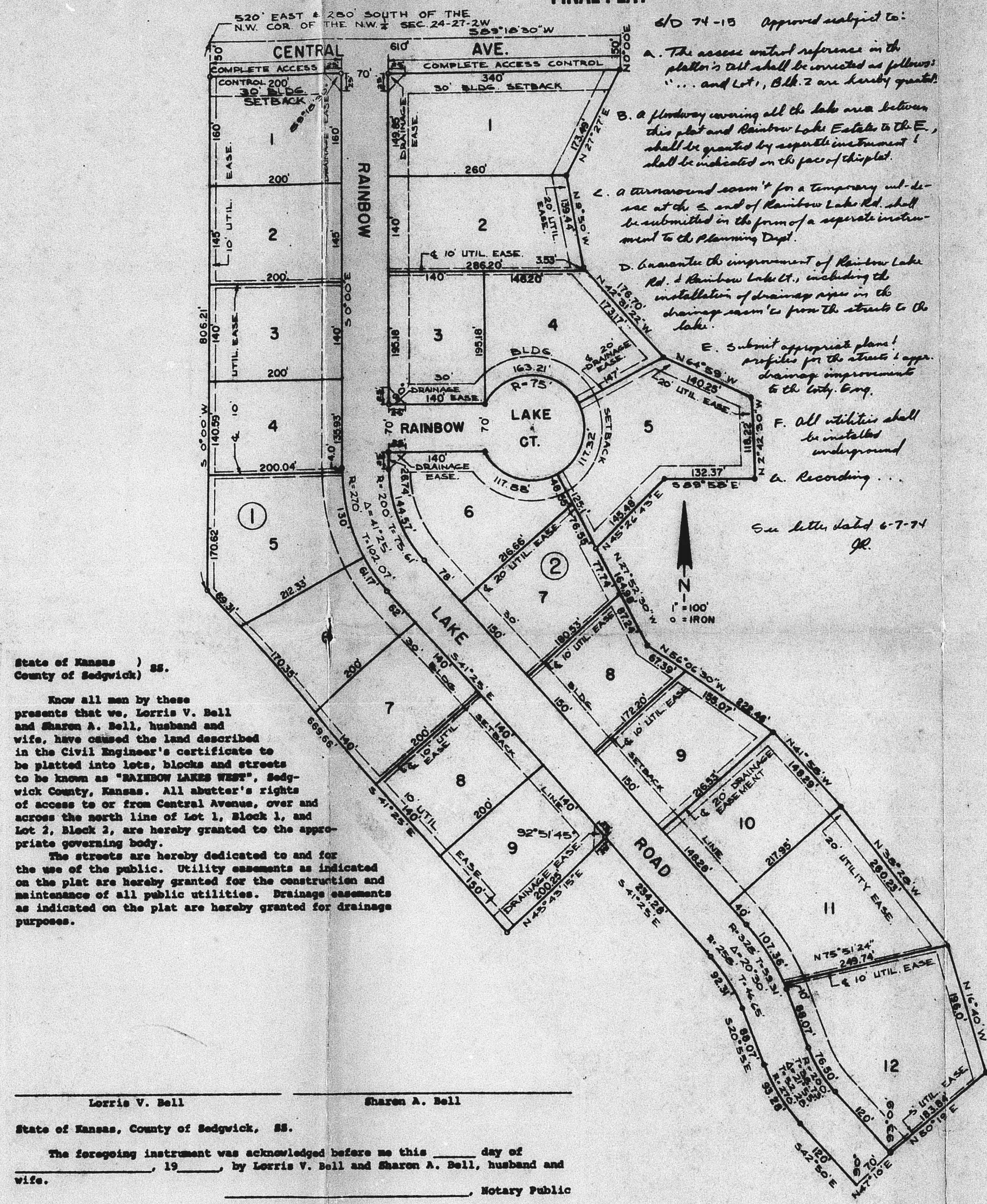
REVISED COPY

OFFICE COPY
DO NOT REMOVE

REVISED COPY
5074-15
FINAL PLAT

RAINBOW LAKES WEST

SEDGWICK COUNTY, KANSAS



State of Kansas) ss.
County of Sedgwick)

Know all men by these presents that we, Lorris V. Bell and Sharon A. Bell, husband and wife, have caused the land described in the Civil Engineer's certificate to be platted into lots, blocks and streets to be known as "RAINBOW LAKES WEST", Sedgwick County, Kansas. All abutter's rights of access to or from Central Avenue, over and across the north line of Lot 1, Block 1, and Lot 2, Block 2, are hereby granted to and for the use of the public. Utility easements as indicated on the plat are hereby granted for the construction and maintenance of all public utilities. Drainage easements as indicated on the plat are hereby granted for drainage purposes.

Lorris V. Bell Sharon A. Bell
 State of Kansas, County of Sedgwick, SS.
 The foregoing instrument was acknowledged before me this _____ day of _____, 19____, by Lorris V. Bell and Sharon A. Bell, husband and wife.
 _____, Notary Public

6/10 74-15 Approved subject to:
 A. The access without reference to the plat is all shall be inserted as follows: ... and Lot 1, Block 2 are hereby granted
 B. A plat covering all the lake area between this plat and Rainbow Lake Estate to the E. shall be granted by separate instrument and shall be indicated on the face of this plat.
 C. A drainage easement for a temporary water use at the S. end of Rainbow Lake Rd. shall be submitted in the form of a separate instrument to the Planning Dept.
 D. Consistent with the improvement of Rainbow Lake Rd. & Rainbow Lake Ct., including the installation of drainage pipes in the drainage easement from the streets to the lake.
 E. Submit appropriate plans for the streets & drainage improvements to the City Eng.
 F. All utilities shall be installed underground according to the recording.
 See letter dated 6-7-74

I, Kenneth O. Taylor, Civil Engineer in said State and County, do hereby certify that I have surveyed and placed "RAINBOW LAKES WEST", Sedgwick County, Kansas, and that the accompanying plat is a true and correct exhibit of said survey described as follows: A tract in the SW 1/4 of Section 24, T27S, R27W of the 6th P.M., Sedgwick County, Kansas, described as follows: Commencing at the SW corner of said SW 1/4; thence S89°20'00"W on the west line of said SW 1/4, 200 feet; thence S89°20'00"W parallel to the north line of said SW 1/4, 520 feet to a point of beginning; thence S89°20'00"W parallel to the west line of said SW 1/4, 806.21 feet; thence S41°25'15"W, 669.66 feet; thence S45°43'15"W, 200.25 feet; thence S41°25'15"W, 234.28 feet to the P.C. of a curve; thence southeasterly on a curve to the right having a radius of 250 feet and a deflection angle of 20°20', 92.31 feet to the P.T. of said curve; thence S20°25'15"W on a tangent to said curve, 88.07 feet to the P.C. of a curve; thence southeasterly on a curve to the left having a radius of 270 feet and a deflection angle of 21°28', 93.28 feet to the P.T. of said curve; thence S42°20'00"W on a tangent to said curve, 120 feet; thence S47°10'10", 70 feet; thence S50°19'10", 183.64 feet; thence N16°40'40"W, 196.00 feet; thence N38°28'28"W, 260.23 feet; thence S41°25'15"W, 148.29 feet; thence S56°06'30"W, 222.46 feet; thence S27°22'30"W, 164.98 feet; thence S49°26'43"W, 145.48 feet; thence S89°20'00"W, 122.37 feet; thence S74°12'30"W, 118.22 feet; thence S64°00'00"W, 140.25 feet; thence S45°21'12"W, 176.70 feet; thence S89°20'00"W, 139.44 feet; thence S27°22'30"W, 173.49 feet; thence S89°20'00"W, 610 feet to the point of beginning.

Kenneth O. Taylor, Civil Engineer

This plat approved and all dedications shown hereon accepted by the Board of City Commissioners of the City of Wichita, Kansas, this _____ day of _____, 19____.

Garry L. Purter, Mayor
 Ralph C. Sherry, City Clerk

This plat approved and all dedications shown hereon accepted by the Board of County Commissioners of Sedgwick County, Kansas, this _____ day of _____, 19____.

ATTEST: Tom Scott, Chairman
 Marie Warden, County Clerk
 Earl E. Rush, Commissioner
 Elmer S. Peters, Commissioner
 Entered on transfer record this _____ day of _____, 19____.

State of Kansas, County of Sedgwick, SS.
 This is to certify that this instrument was filed for record in the Register of Deeds Office, at _____ o'clock _____, on the _____ day of _____, 19____.

John Hale, Register of Deeds
 Pearl S. Gilbert, Deputy

Seneca National Bank of Wichita, by _____, and Mid Kansas Federal Savings and Loan Association of Wichita, by _____, mortgagees of the land described in the Civil Engineer's certificate, do hereby consent to the platting of "RAINBOW LAKES WEST", Sedgwick County, Kansas.

ATTEST: Seneca National Bank of Wichita
 Mid Kansas Federal Savings and Loan Association of Wichita

State of Kansas, County of Sedgwick, SS.
 The foregoing instrument was acknowledged before me this _____ day of _____, 19____, by _____ of Seneca National Bank of Wichita, a Kansas corporation, on behalf of the corporation.
 _____, Notary Public

State of Kansas, County of Sedgwick, SS.
 The foregoing instrument was acknowledged before me this _____ day of _____, 19____, by _____ of Mid Kansas Federal Savings and Loan Association of Wichita, a Kansas corporation, on behalf of the corporation.
 _____, Notary Public

This plat of "RAINBOW LAKES WEST", Sedgwick County, Kansas, has been submitted to and approved by the Wichita-Sedgwick County Metropolitan Area Planning Commission, Wichita, Kansas.

Noted this _____ day of _____, 19____.

Wichita-Sedgwick County Metropolitan Area Planning Commission
 Marjorie L. Taylor, Chairman
 Robert A. Lakin, Secretary



SKETCH PLAT
 RAINBOW LAKES WEST
 OFFICE COPY
 DO NOT REMOVE
 FOR: L.V. BELL
 SKETCH PLAT
 SD74-15

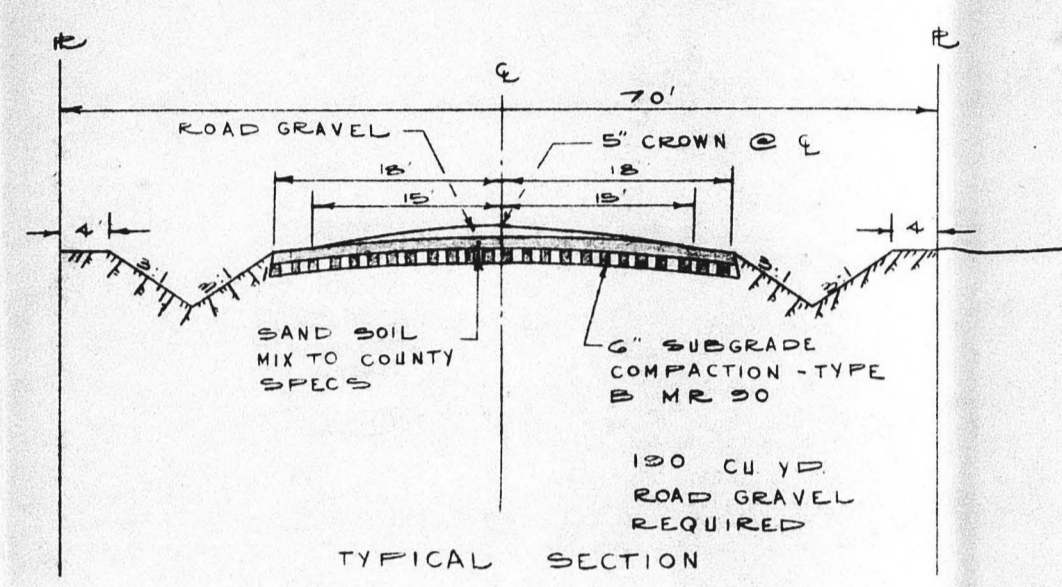
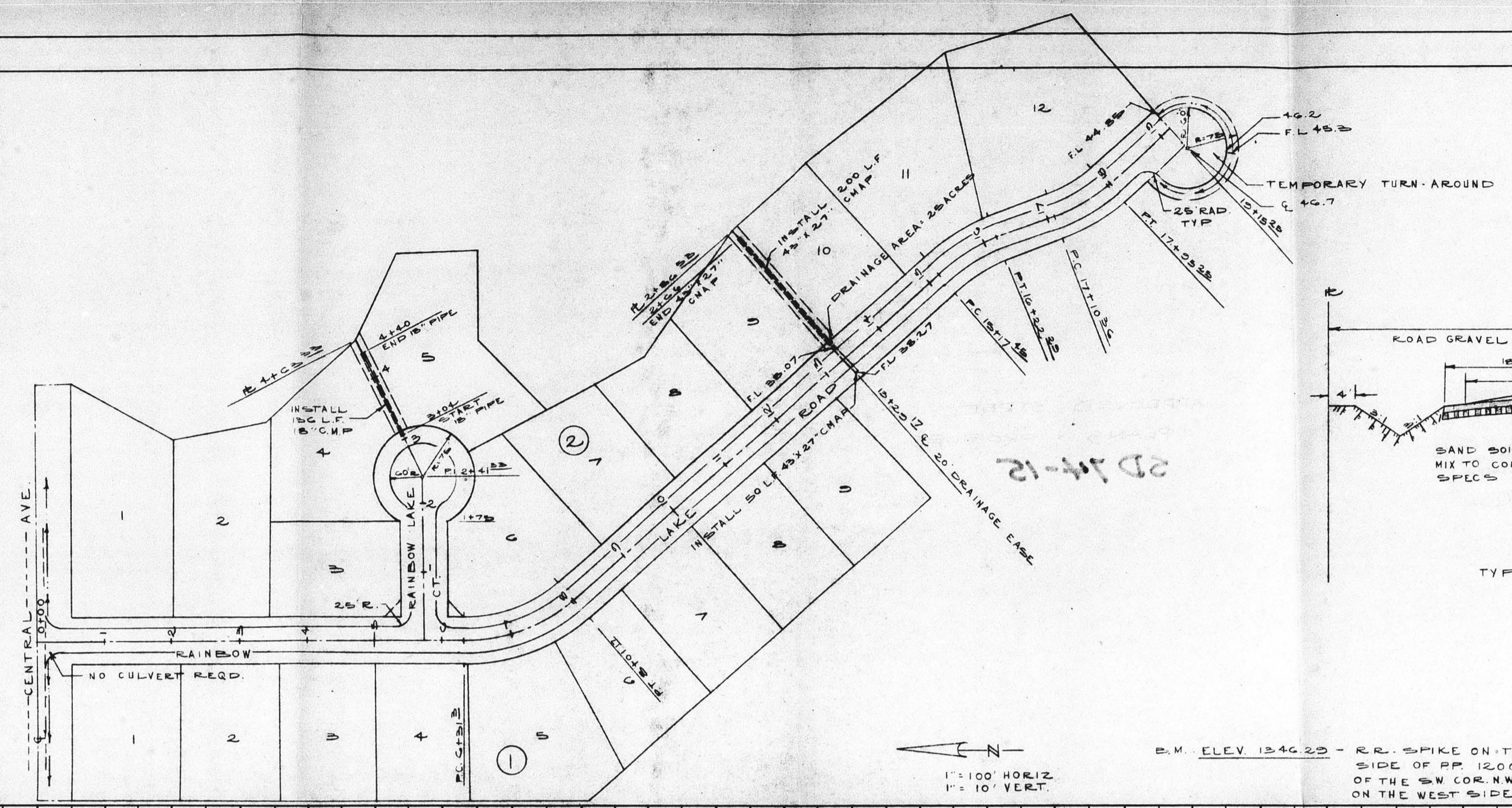
TOPO MADE JULY 26, 1973

B.M. ELEV. 1545.22 - RR SPIKE ON THE EAST SIDE OF R.F.P. 1200' SOUTH OF THE SW COR. NW 1/4 SEC. 24-27-2W ON THE WEST SIDE OF 155TH ST. WEST.

K. O. TAYLOR, P.E.
 AUGUST 20, 1973

PLAN
 DRAWN BY
 DATE
 CHECKED BY
 DATE

PROFILE
 DRAWN BY
 DATE
 CHECKED BY
 DATE



1" = 100 HORIZ.
 1" = 10 VERT.

B.M. ELEV. 1246.25 - RR. SPIKE ON THE EAST SIDE OF PP 1200' S. OF THE SW COR. NW 1/4 SEC. 24-27-2W ON THE WEST SIDE OF 125TH ST. W.

STREET PROFILES
 RAINBOW LAKES WEST
 K.O. TAYLOR, P.E.
 JUNE 5, 1974

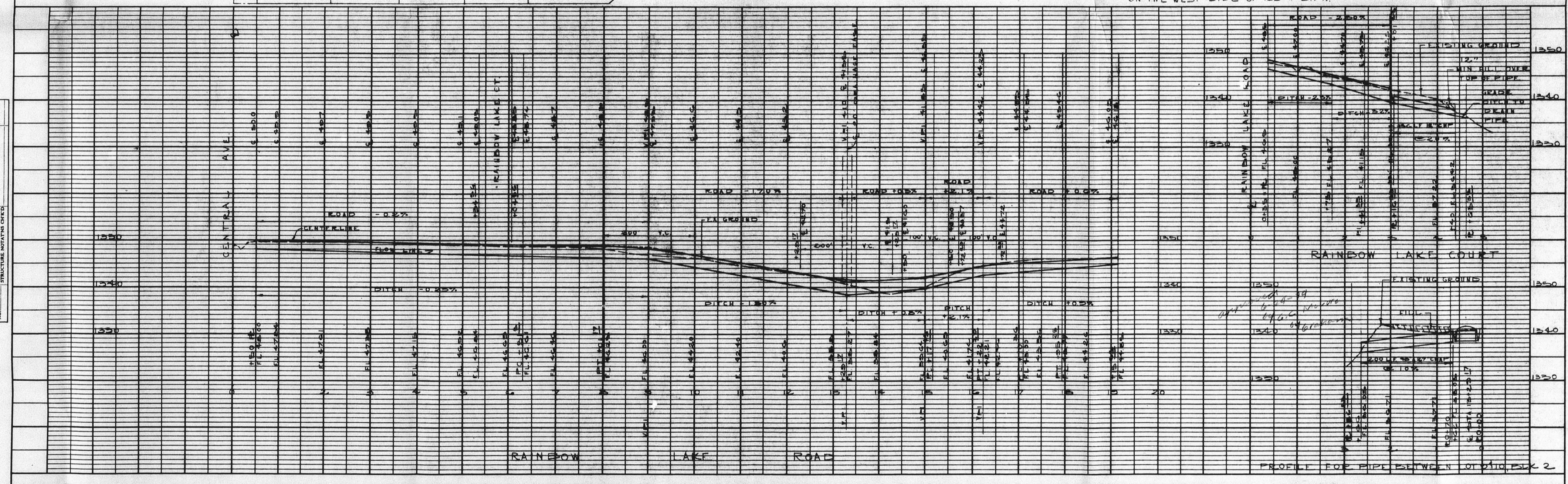
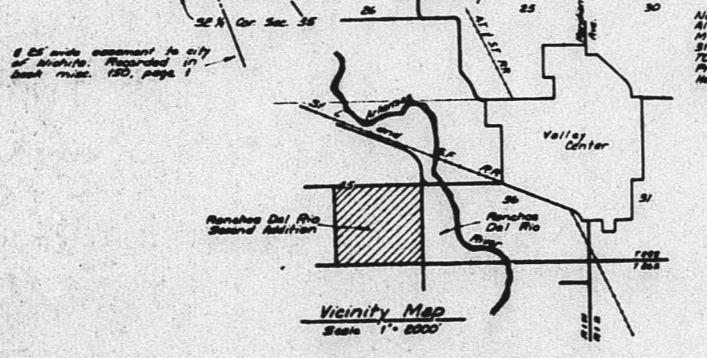
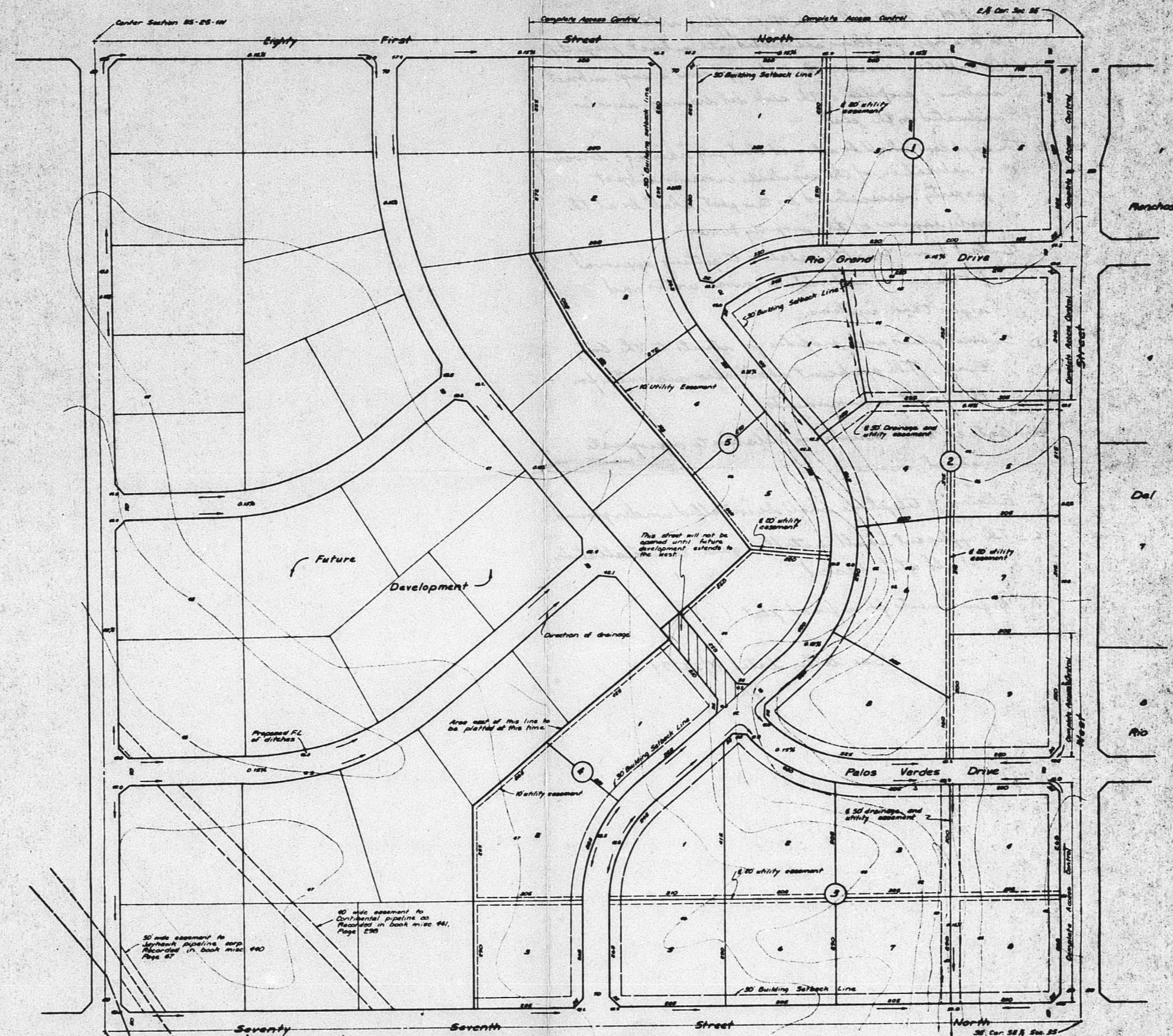


PLATE 1 - PLAN - PROFILE - P.A.S.
 CLEARPRINT PAPER CO. S.T. CAL.
 NO. 3086-1

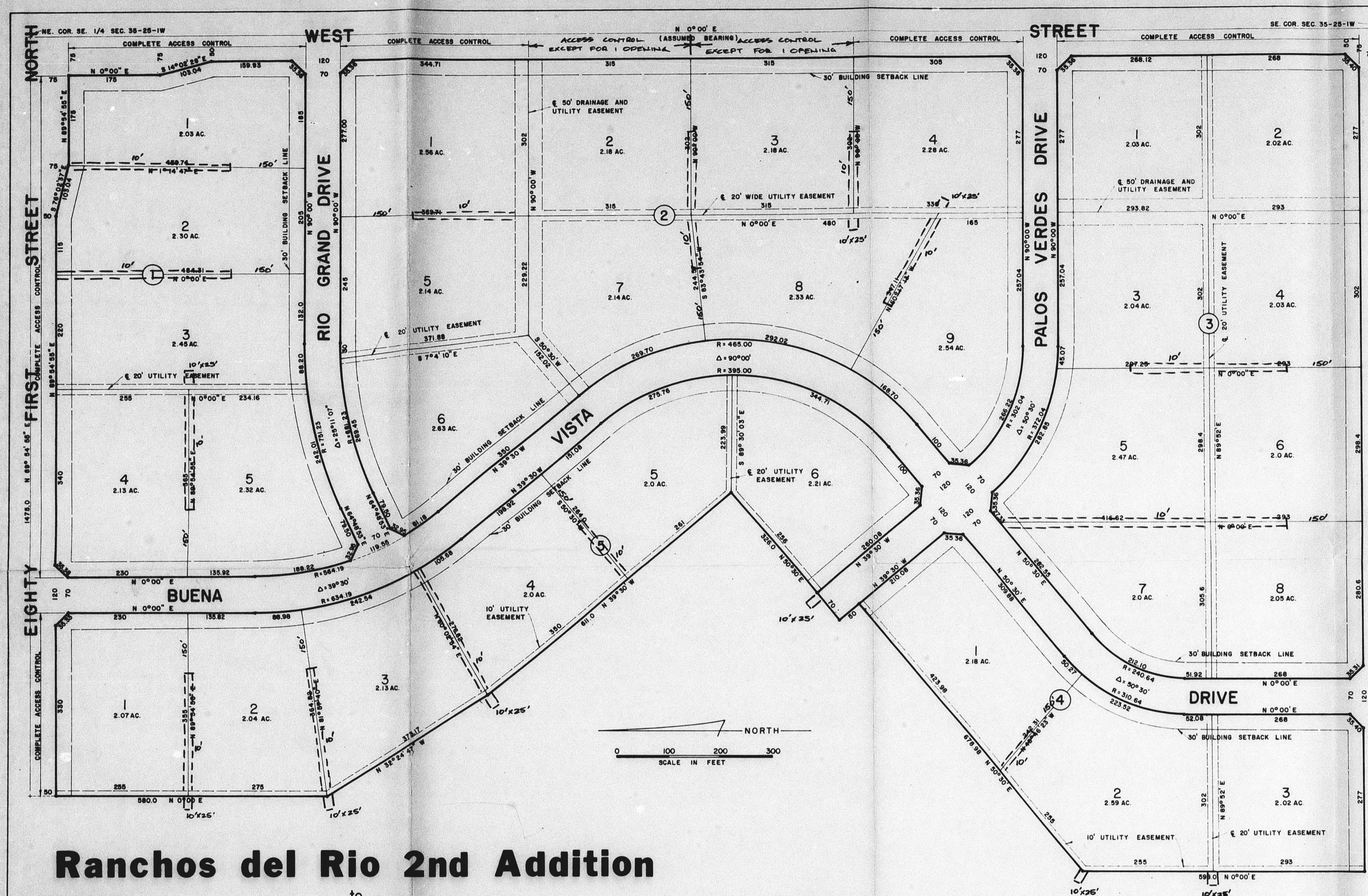
SD 74-15



All streets will be graded according to the
 plan shown on this plat. The plat is subject to
 the approval of the Board of Supervisors and
 the County Engineer. The plat is subject to
 the approval of the Board of Supervisors and
 the County Engineer.

Preliminary Plat
 Rancho Del Rio Second Addition
 SD 74-89
 4/10 74-89 approved subject to conditions as set
 forth in letter dated 11/22/74. SEE BACK.

OFFICE COPY
 DO NOT REMOVE
PRELIMINARY PLAT



Ranchos del Rio 2nd Addition
 to
 Sedgwick County, Kansas
 Engineer: Reiss and Goodness Engineers

OFFICE COPY
 DO NOT REMOVE
 SD 74-89
 FINAL PLAT

Legend: 3/4" Galvanized Iron pipe
 s/d 74-89 approved subject to conditions
 as set forth on back. See letter dated
 1-17-75

STATE OF KANSAS) ss.
 COUNTY OF SEDGWICK)

I, Charles M. Goodness, being a duly licensed professional engineer in the said county and state, do hereby certify that I have surveyed and plotted RANCHO DEL RIO 2ND ADDITION to Sedgwick County, Kansas, described as follows: Beginning at the Southeast corner of Section 35, Township 25 South, Range 1 West of the 6th P.M. Sedgwick County, Kansas; thence North on the East line of said Section 35 on an assumed bearing of N 0° 00' E to the Northeast corner of the SW 1/4 of said Section 35; thence S 89° 54' 55" W on the North line of the SW 1/4 of said Section 35 for a distance of 1475.00 feet; thence S 0° 00' W for a distance of 580.00 feet; thence S 32° 24' 47" E for a distance of 373.17 feet; thence S 39° 30' E for a distance of 611.00 feet; thence S 50° 30' W for a distance of 326.00 feet; thence S 39° 30' E for a distance of 50.00 feet; thence S 50° 00' W for a distance of 378.98 feet; thence S 0° 00' W for a distance of 598.00 feet to the South line of said Section 35; thence N 89° 52' E for a distance of 1650.00 feet to the point of beginning. Containing 83.00 acres more or less. The accompanying plat is a true and correct exhibit of property surveyed.

Charles M. Goodness, P. E.
 (SEAL)

KNOW ALL MEN BY THESE PRESENTS:
 That we, Tom H. Tomlin and Donna H. Tomlin, have caused the land described in the engineer's certificate to be platted into blocks, lots and streets. Streets are hereby dedicated to and for the use of the public. Easements are hereby granted as indicated for the construction and maintenance of utilities and drainage. All abutter's rights of access to or from West Street over and across the West line of West Street and to or from 81st Street North over and across the south line of 81st Street North, except for one opening for each lot from West Street onto Lot 2 and Lot 3, Block 2, are hereby granted to the appropriate governing body.

Tom H. Tomlin
 Donna H. Tomlin

STATE OF KANSAS) ss.
 COUNTY OF SEDGWICK)

Be it remembered that on this _____ day of _____, 1975, before me, a notary public in and for said county and state, came Tom H. Tomlin and Donna H. Tomlin to me known to be the same persons who executed the foregoing instrument of writing and duly acknowledged the same as their voluntary act and deed. In testimony whereof I have hereunto set my hand and affixed my notarial seal the day and year above written.

Notary Public
 (SEAL)

My Commission expires _____

This plat approved and the dedications shown hereon accepted by the Board of County Commissioners of Sedgwick County, Kansas this _____ day of _____, 1975.

WICHITA-SEDGWICK COUNTY METROPOLITAN
 AREA PLANNING COMMISSION

Harlan R. Kamen Chairman
 Robert A. Lakin Secretary
 (SEAL)

This plat approved and the dedications shown hereon accepted by the Board of County Commissioners of Sedgwick County, Kansas this _____ day of _____, 1975.

Earl E. Bush Chairman
 Elmer S. Peters Commissioner
 Tom Scott Commissioner

Entered on Transfer Record this _____ day of _____, 1975

Marie Warden County Clerk
 STATE OF KANSAS) ss.
 COUNTY OF SEDGWICK)

This is to certify that this instrument was filed for record in the Register of Deeds Office at _____ A.M. - P.M. on the _____ day of _____, 1975.

John Hale Register of Deeds
 _____ Deputy



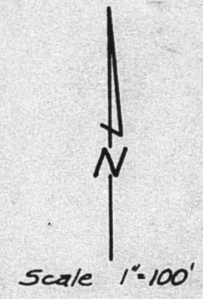
SKETCH PLAN

RANCHOS DEL RIO 2ND ADDITION

OFFICE COPY
DO NOT REMOVE
SD 74-89
SKETCH PLAT

REISS AND GOODNESS ENGINEERS
2160 E. DOUGLAS WICHITA - KANSAS

JULY 19, 1974



All lots 2 acre single family residential