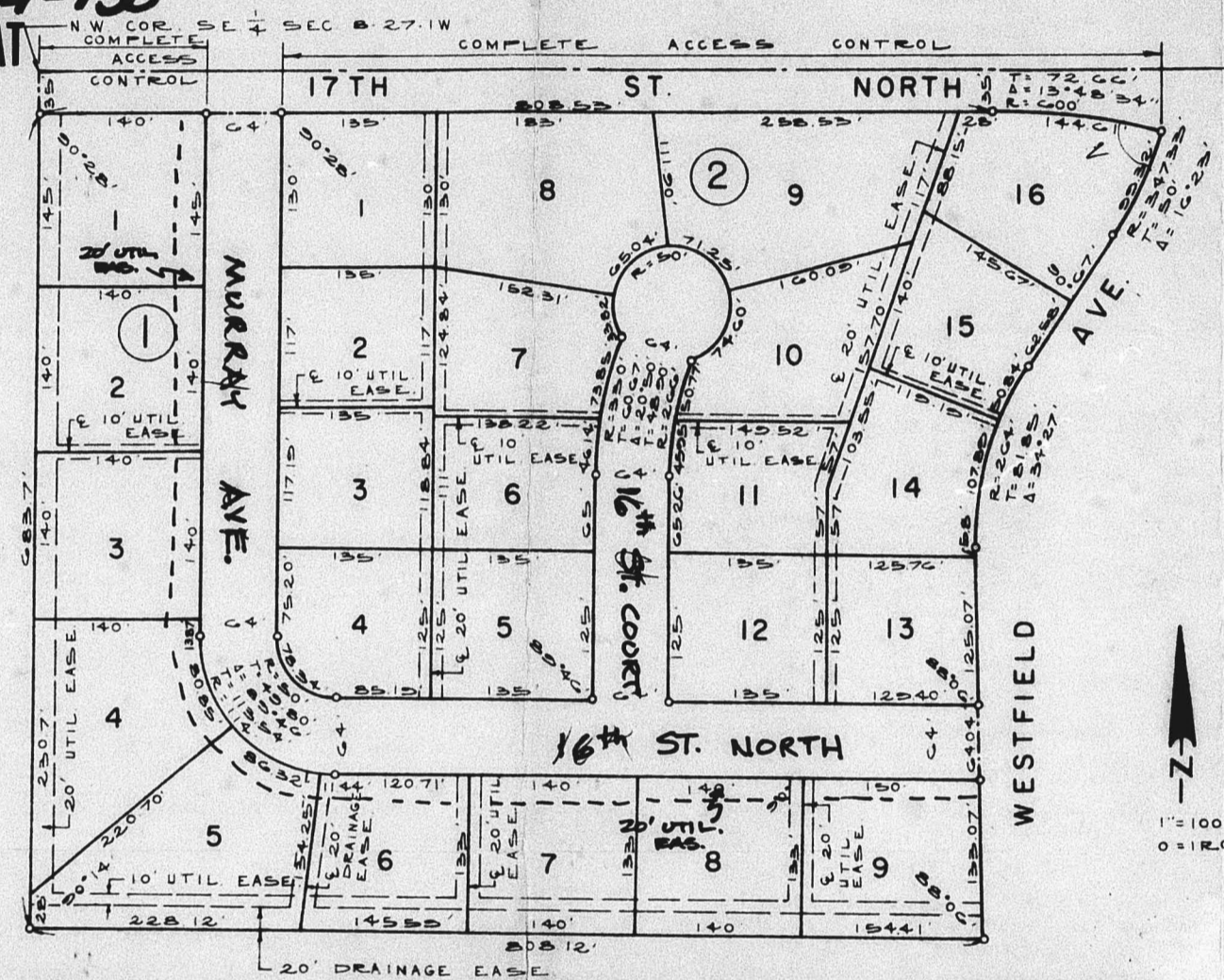


W

OFFICE COPY
DO NOT REMOVE
SS 74-130
FINAL PLAT

WESTLINK VILLAGE TWELFTH ADDITION
WICHITA, SEDGWICK COUNTY, KANSAS

56 74-130 Approved subject to conditions
as set forth on the back. See letter dated
2/4/75



This plat approved and all dedications shown hereon accepted by the Board of County Commissioners of Sedgwick County, Kansas, this ___ day of _____, 19__.

Earl S. Bush, Chairman
Tom Scott, Commissioner
John Hale, Commissioner

ATTEST: John Hale, County Clerk

George Pierce, County Clerk
Entered on transfer record this ___ day of _____, 19__.

State of Kansas, County of Sedgwick, SS.
This is to certify that this instrument was filed for record in the Register of Deeds Office, at ___ S., on the ___ day of _____, 19__.

Bette F. McCart, Register of Deeds
Pearl B. Gilbert, Deputy

State of Kansas, County of Sedgwick, SS.
I, Kenneth O. Taylor, Civil Engineer in said State and County, do hereby certify that I have surveyed and platted "WESTLINK VILLAGE TWELFTH ADDITION", Wichita, Sedgwick County, Kansas, and that the accompanying plat is a true and correct exhibit of said survey described as follows: The SE 1/4 of Section 6, 17th, 1/4 of the 6th P.M., Sedgwick County, Kansas, except that part of said SE 1/4 platted as Westlink Village Sixth Addition, Wichita, Sedgwick County, Kansas, and except that part platted as Westlink Village Eleventh Addition, Wichita, Sedgwick County, Kansas.

Kenneth O. Taylor, Civil Engineer

Know all men by these presents that we, Thurman W. Smith and Judy A. Smith, husband and wife, have caused the land described in the Civil Engineer's certificate to be platted into lots, blocks and streets to be known as "WESTLINK VILLAGE TWELFTH ADDITION", Wichita, Sedgwick County, Kansas.

Utility easements as indicated on the plat are hereby granted for the construction and maintenance of all public utilities. The streets are hereby dedicated to and for the use of the public. Drainage easements as indicated on the plat are hereby granted for drainage purposes.

All abutter's rights of access to or from 17th St. North, over and across the north line of Lot 1, Block 1 and the north line of Lots 1, 8, 9 and 16, are hereby granted to the City of Wichita.

Thurman W. Smith, Judy A. Smith

State of Kansas, County of Sedgwick, SS.
The foregoing instrument was acknowledged before me this ___ day of _____, 19__, by Thurman W. Smith and Judy A. Smith, husband and wife.

Notary Public

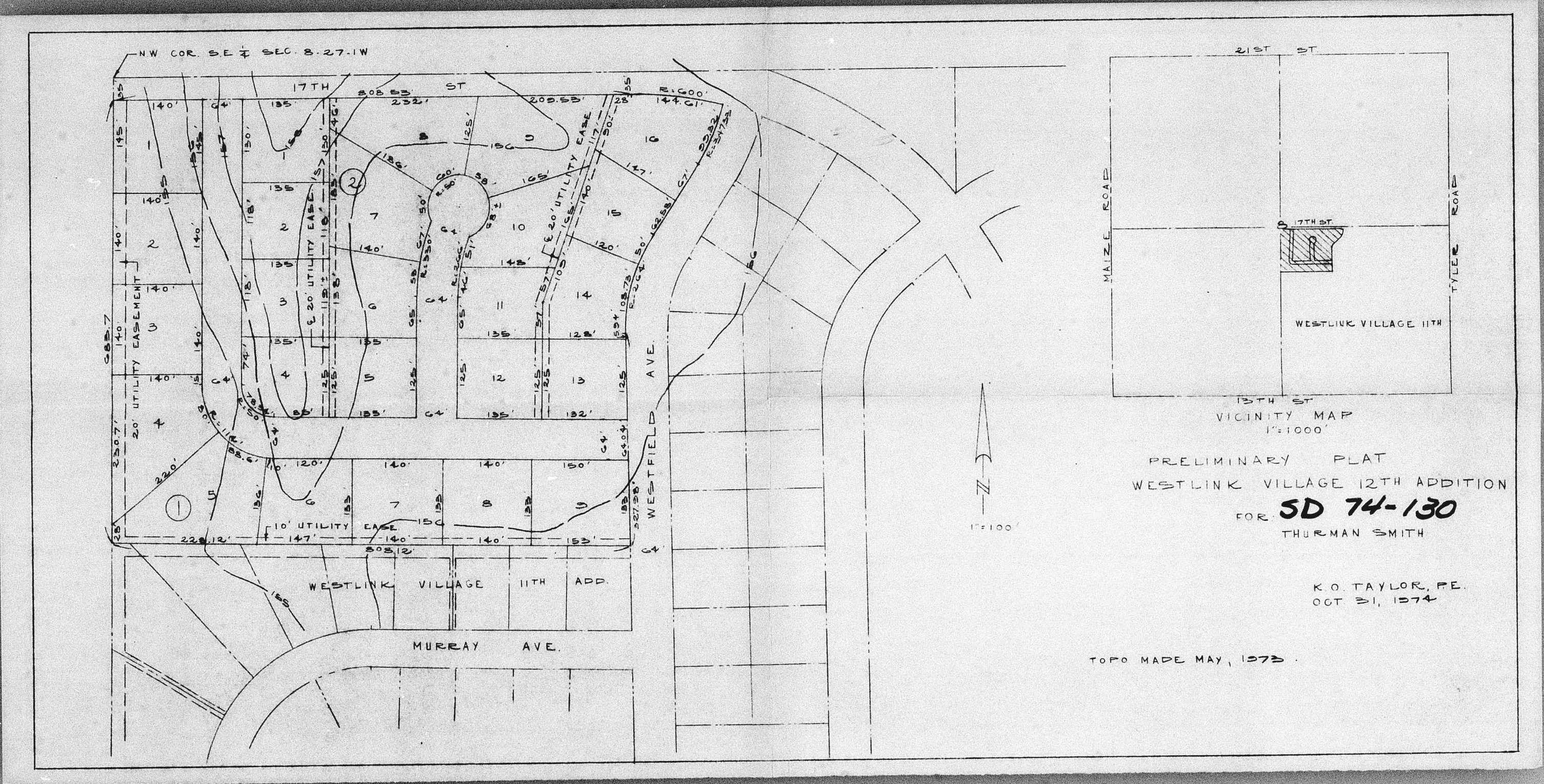
This plat of "WESTLINK VILLAGE TWELFTH ADDITION", Wichita, Sedgwick County, Kansas, has been submitted to and approved by the Wichita-Sedgwick County Metropolitan Area Planning Commission, Wichita, Kansas.

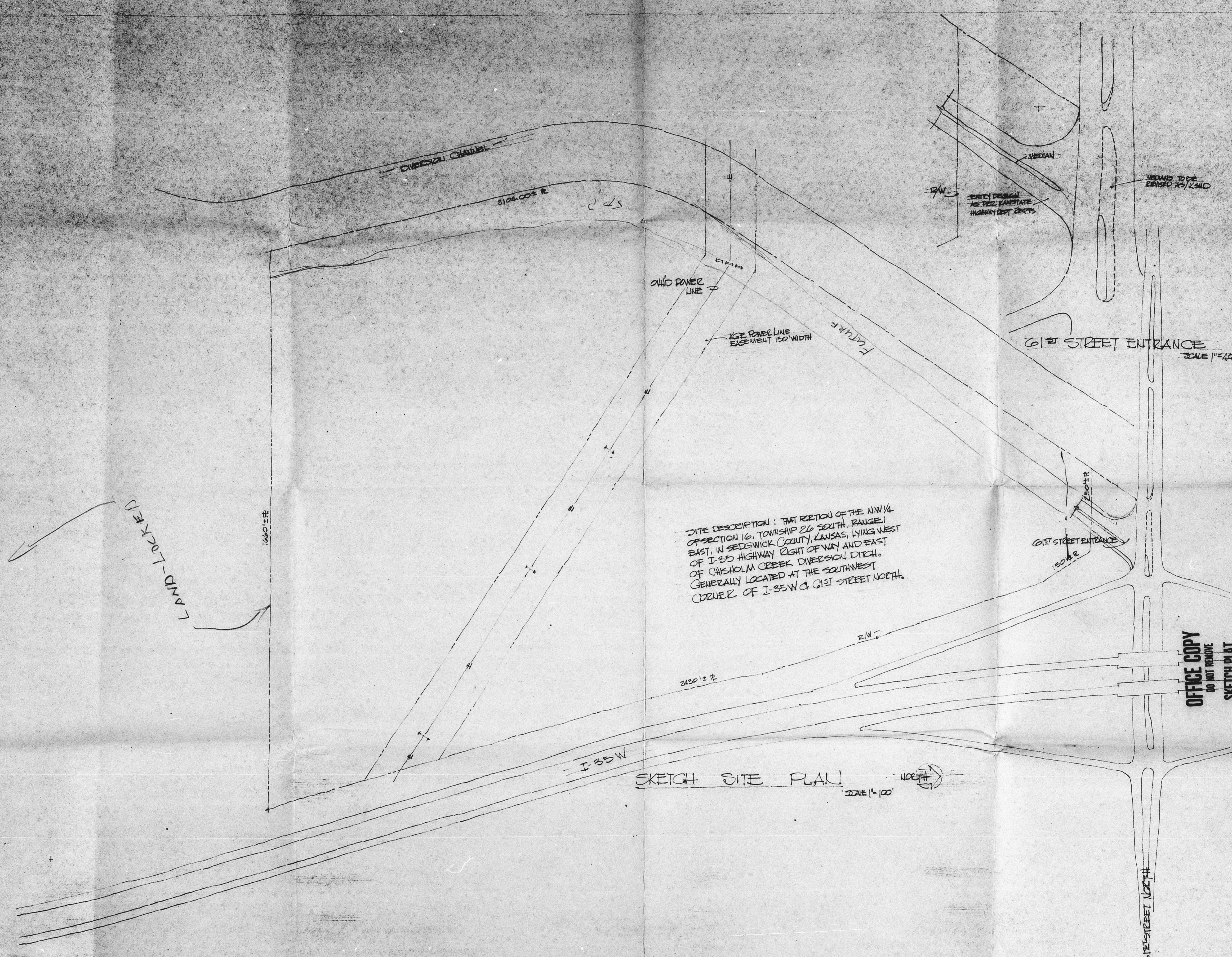
Dated this ___ day of _____, 19__.

Wichita-Sedgwick County Metropolitan Area Planning Commission
By: Harlan B. Kamen, Chairman
Robert A. Lakin, Secretary

This plat approved and all dedications shown hereon accepted by the Board of City Commissioners of the City of Wichita, Kansas, this ___ day of _____, 19__.

Garry L. Porter, Mayor
Don Glisick, City Clerk





SITE DESCRIPTION: THAT PORTION OF THE NW 1/4 OF SECTION 16, TOWNSHIP 26 SOUTH, RANGE 1 EAST, IN SEDGWICK COUNTY, KANSAS, LYING WEST OF I-35 HIGHWAY RIGHT OF WAY AND EAST OF CHEHOLM CREEK DIVERSION DITCH. GENERALLY LOCATED AT THE SOUTHWEST CORNER OF I-35W & G1ST STREET NORTH.

SKETCH SITE PLAN
SCALE 1" = 100'

OFFICE COPY
DO NOT REMOVE
SKETCH PLAT
SD 75-38

PROJECT NUMBER	SD 75-38
DATE	7/11/70
BY	WICHITA
CHECKED BY	WICHITA

Wichita and Sedgewick Counties

applesby & marsh
architects
engineers

WICHITA TRUCK CENTER
G1ST STREET NORTH & INTERSTATE 35W
WICHITA, KANSAS
CREST REAL ESTATE & INVESTMENT INC.



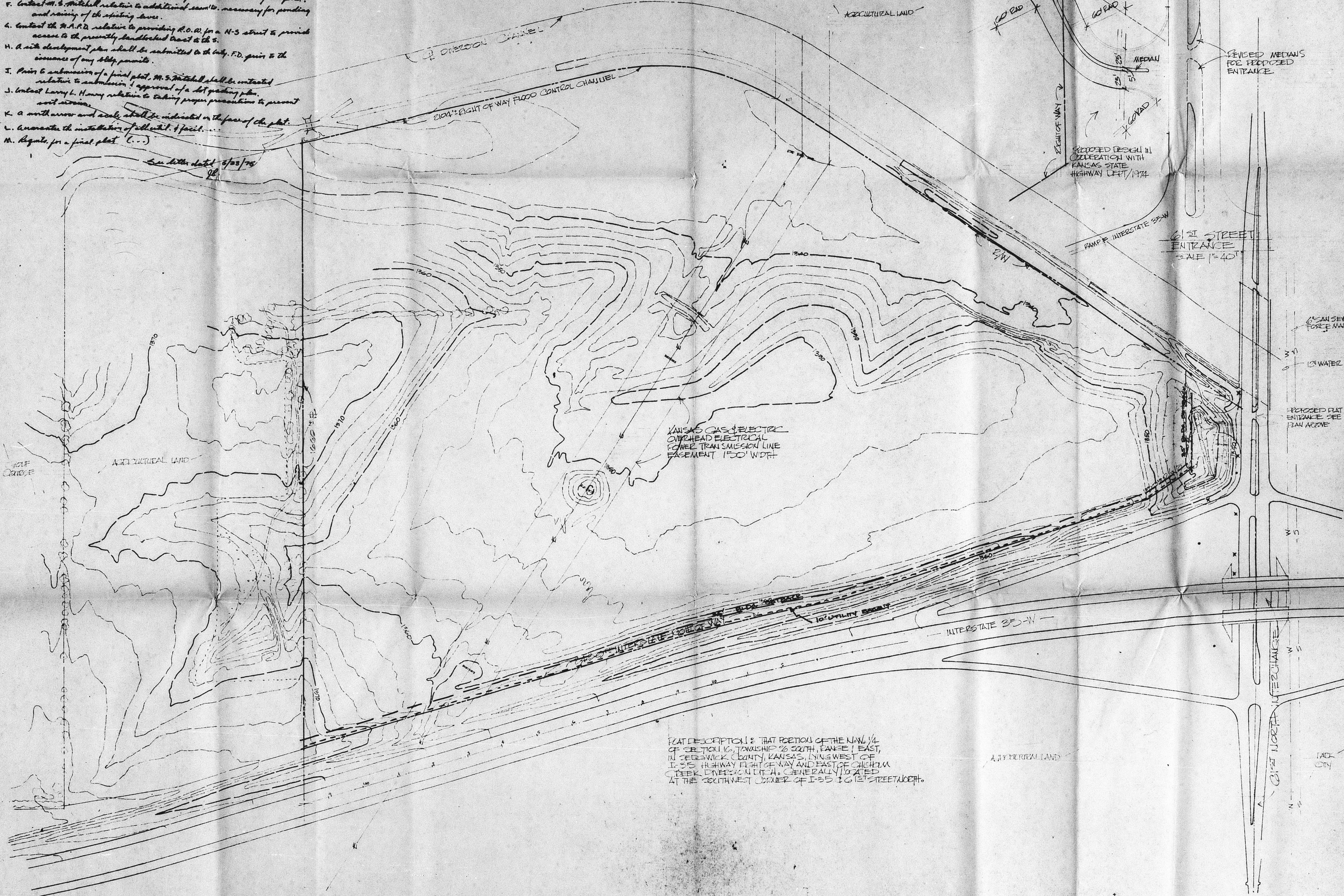
sheet number
1 of 1

1355

2/10/75 SD Approved subject to:

- A. The associated gas case 622-0915 from "A-1" & "E" was approved by the B.C.C. subject to platting.
- B. A 25' utility easement shall be indicated from Ch. H.O. of 6/17/64 N. 1, I-35D.
- C. The applicant shall contact the Park City Improvement District relative to serving subject property with a municipal type water & sewer system.
- D. A letter shall be submitted to the Planning Dept from the State Hwy. Dept. stating that appropriate guarantees have been submitted for the entryway and median reconstruction necessitated by this plat.
- E. A 10' utility easement shall be indicated adjacent to the E. line of the plat.
- F. Contact Mr. S. Mitchell relative to additional easements necessary for ponding and raising of the existing dunes.
- G. Contact the H.A.R.D. relative to providing R.O.A. for a N-S street to provide access to the presently abandoned tract to the S.
- H. A site development plan shall be submitted to the City, P.D. prior to the issuance of any plat permits.
- I. Prior to submission of a final plat, Mr. S. Mitchell shall be contacted relative to submission & approval of a lot grading plan.
- J. Contact Larry L. Henry relative to taking proper precautions to prevent soil erosion.
- K. A north arrow and scale shall be indicated on the face of the plat.
- L. Ascertain the installation of all utility facilities.
- M. Apply for a final plat (1-7)

See letter dated 6/23/75



PLAT DESCRIPTION: THAT PORTION OF THE NW 1/4 OF SECTION 16, TOWNSHIP 26 SOUTH, RANGE 1 EAST, IN CHEROKEE COUNTY, KANSAS, LYING WEST OF I-35 HIGHWAY RIGHT OF WAY AND EAST OF COLUMBIA CREEK TRVERSE PLAT A, GENERALLY LOCATED AT THE SOUTHWEST CORNER OF I-35 TO 61st STREET SOUTH.

OFFICE COPY DO NOT REMOVE

PRELIMINARY PLAT

SD 75-38

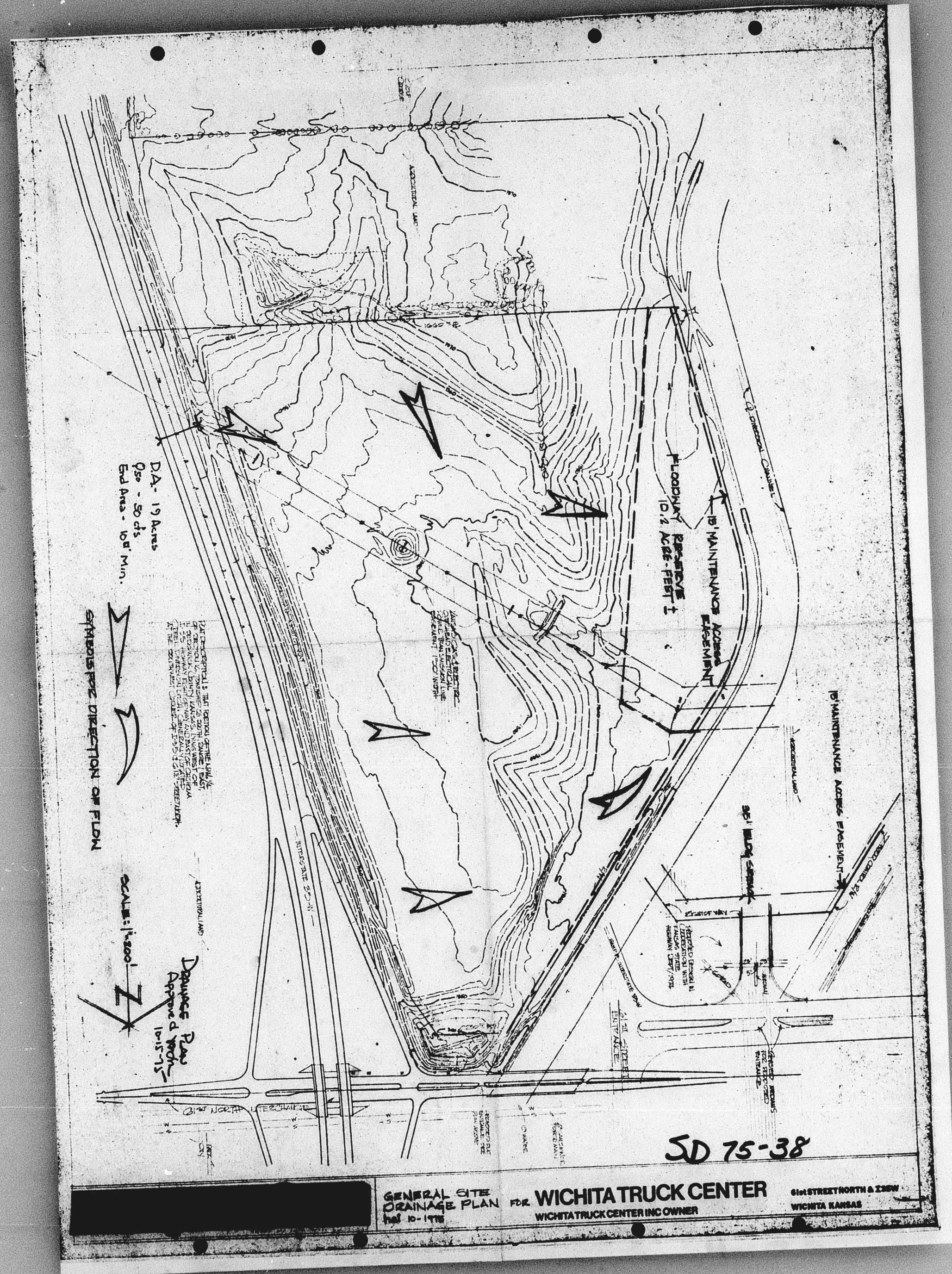
preliminary plat WICHITA TRUCK CENTER INC OWNER

61st STREET NORTH & I-35W WICHITA KANSAS



appleby & marsh architects engineers





DA: 19 Area
 Det - 50 cfs
 Sed Rate - 15" Min.

Direction of Flow

Scale: 1" = 50'

DANGER ROAD
 APPROX. 10' WIDE

SD 75-38

GENERAL SITE DRAINAGE PLAN FOR WICHITA TRUCK CENTER
 WICHITA TRUCK CENTER INC OWNER
 61st STREET NORTH & 23RD WICHITA, KANSAS

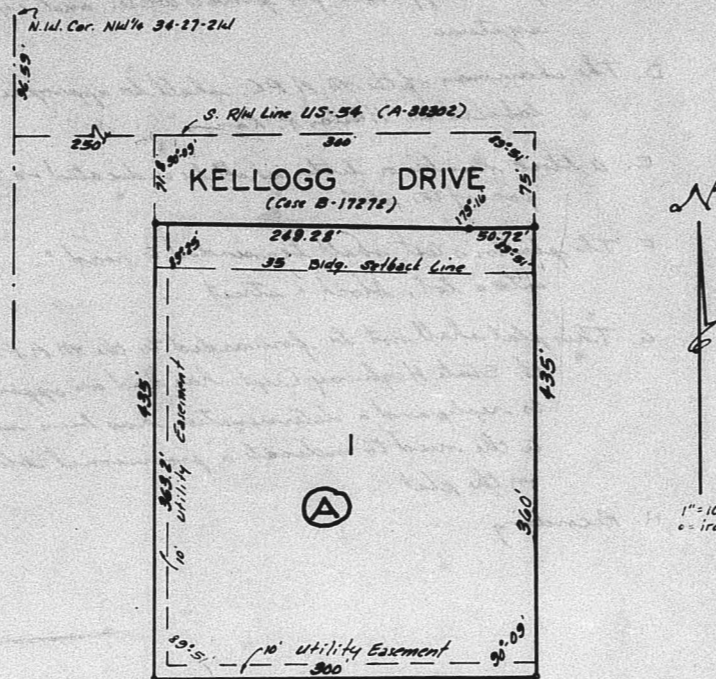
610 74-111 Approved subject
to conditions as set forth in
letter dated 11-8-74

WILSON ACRES

SEDGWICK COUNTY, KANSAS.

OFFICE COPY
DO NOT REMOVE

FINAL PLAT
SD 74-111



State of Kansas } s.s. We, Baughman Company, Surveyors in
Sedgwick County and state do hereby certify that we have
surveyed and plotted "WILSON ACRES" Sedgwick County,
Kansas, and that the accompanying plat is a true and
correct exhibit of the property surveyed, described as
beginning at a point on the south right-of-way line
of U.S. Highway as condemned in case 10-38802,
250 feet east of the west line of the NW 1/4 of Sec.
34, T19S, R. 27E, thence east along said Highway
right-of-way, 300 feet; thence south parallel with
the west line of said NW 1/4, 435 feet; thence west
parallel with said Highway right-of-way, 300 feet;
thence north 435 feet to beginning, except that part
taken for Highway in case B-11274.

Baughman Company
Surveyor

This plat of "WILSON ACRES" Sedgwick
County, Kansas, has been submitted to and approved
by the Wichita Sedgwick County Metropolitan Area
Planning Commission, Wichita, Kansas.
Dated this _____ day of _____, 1974.
Wichita Sedgwick County Metropolitan Area Planning Commission

Chairman

Secretary

This plat approved and all
dedications shown herein accepted by the Board of
Commissioners of the City of Wichita, Kansas,
this _____ day of _____, 1974.

Mayor

City Clerk

This plat approved and all
dedications shown herein accepted by the Board of
County Commissioners, Sedgwick County, Kansas, this
day of _____, 1974.

Chairman

Commissioner

Commissioner

County Clerk

Entered on transfer record
this _____ day of _____, 1974.

County Clerk

Know all men by these presents that
we, Dean D. Wilson and Betty J. Wilson, his wife,
have caused the land described in the surveyor's
certificate to be platted into a lot and block to be
known as "WILSON ACRES" Sedgwick County, Kansas.
Easements are hereby granted as indicated for the
construction and maintenance of all public utilities.

Dean D. Wilson

Betty J. Wilson

State of Kansas } s.s. Be it remembered that on this
Sedgwick County } day of _____, 1974, before me a
notary public in and for said county and state, came
Dean D. Wilson and Betty J. Wilson, his wife,
to me known to be the same persons who executed
the foregoing instrument of writing and duly acknowledged
the execution of the same. In testimony whereof I
have hereunto set my hand and affixed my notarial
seal the day and year above written.

My Commission Expires _____
Notary Public

State of Kansas } s.s. This is to certify that this
Sedgwick County } plat was filed on record in the office of
the Register of Deeds, this _____ day of _____, 1974,
at _____ o'clock _____ M.,
and is duly recorded.

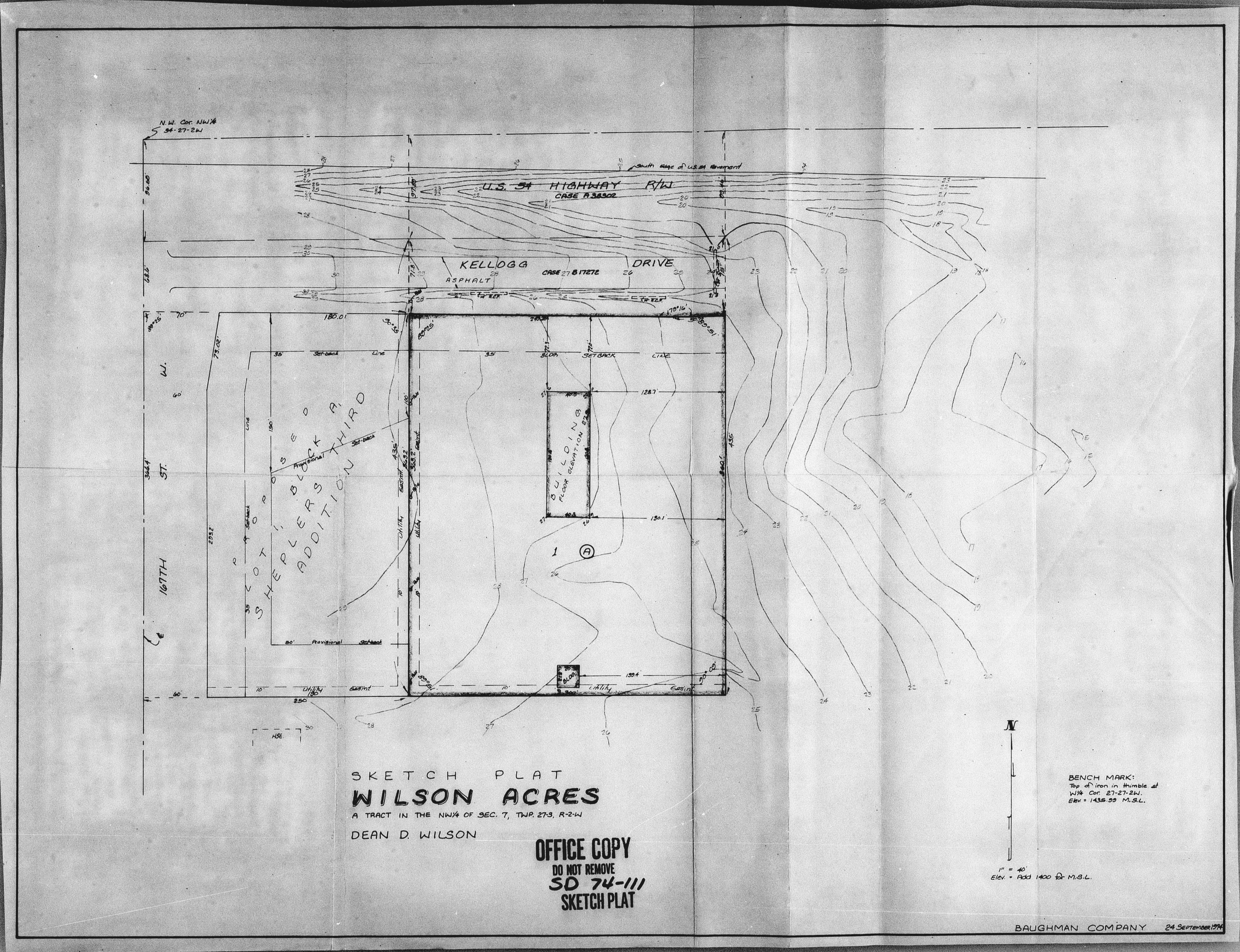
Register of Deeds

Deputy

OFFICE COPY
DO NOT REMOVE
FINAL PLAN
2D 44-111

AGREES

- A. The applicant shall contact the M.P.C. office relative to the dimensions.
- B. Submit a lot grading plan to M.S. Mitchell.
- C. Contact the Environmental Health Dept. relative to getting approval for private water and sewer treatment systems.
- D. The chairman of the M.P.C. shall be appropriately labeled as "Horton R. Simpson".
- E. A block number or letter shall be indicated on the face of the plat.
- F. The plat's text shall be amended to read "... plat is into a lot, block: street: ...".
- G. This plat shall not be forwarded to the M.P.C. until the State Highway Dept. has had an opportunity to reply and a determination has been made as to the need to indicate a provisional lobby setback on the plat.
- H. According...



SKETCH PLAT
WILSON ACRES
 A TRACT IN THE NW¼ OF SEC. 7, TWP. 27S, R-2-W
 DEAN D. WILSON

OFFICE COPY
 DO NOT REMOVE
 SD 74-111
 SKETCH PLAT

BENCH MARK:
 Top of iron in thumb of
 NW Cor. 27-27-24W.
 Elev. = 1438.25 M.S.L.

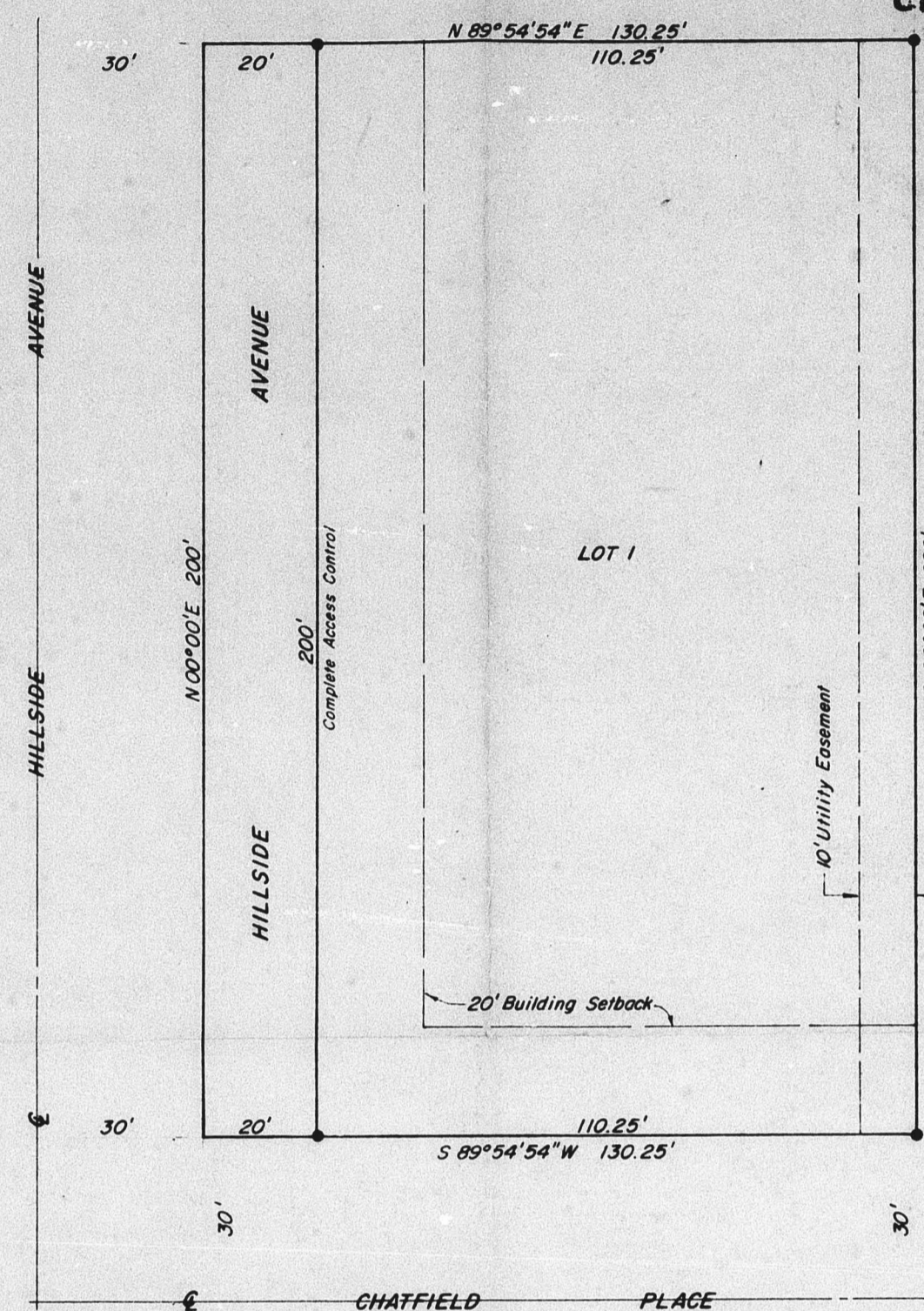
1" = 40'
 Elev. = Add 1400 to M.S.L.

ORTHOPEDIC SPECIALTIES ADDITION

S/D 75-46 TO WICHITA, SEDGWICK COUNTY, KANSAS

OFFICE COPY

DO NOT REMOVE
FINAL PLAT



- City 75-46 Approved subject to:
- A. Approval of this plat is subject to approval of the associated zone case 2-1710 from "RB" to "SB", which is scheduled for consideration by the S.C.C. on 7/15/75.
 - B. A site development plan shall be submitted to the F.D. prior to the issuance of any plat permit.
 - C. Contact the Eng. Dept. relative to serving utility property with sewer.
 - D. Submit a lot grading plan to W.S. Mitchell of the W.P.C. Office.
 - E. Make satisfactory arrangements with the Eng. Dept. relative to clearing the existing work area on Hillside.
 - F. The portion of the existing alley extending into the street (P.O. 2) being dedicated for Hillside shall be removed prior to recording of the plat.
 - G. The applicant shall be advised that existing alleys, extending into the setback area, will become nonconforming upon recording of the plat.
 - H. Approve the reconstruction of sidewalks adjacent to the E. side of Hillside and the N. side of Chatfield adjacent to the new property line.
 - I. Recording...
- See letter dated 7/15/75*

This plat of "ORTHOPEDIC SPECIALTIES ADDITION" has been submitted to and approved by the Wichita-Sedgwick County Metropolitan Area Planning Commission, Wichita, Kansas.

Dated this _____ day of _____, 1975.
Wichita-Sedgwick County Metropolitan Area Planning Commission

Harlan R. Kamen, Chairman
Robert A. Lakin, Secretary

This plat approved and all dedications hereon accepted by the City Commission of the City of Wichita, Sedgwick County, Kansas, this _____ day of _____, 1975.

Connie A. Peters, Mayor
Donald C. Glisick, City Clerk

This plat approved and all dedications hereon accepted by the Board of Commissioners of Sedgwick County, Kansas, this _____ day of _____, 1975.

Earl E. Rush, Chairman
Tom Scott, Commissioner
John Hale, Commissioner
Attest: George Pierce, County Clerk

STATE OF KANSAS, COUNTY OF SEDGWICK, SS:
This is to certify that this instrument was filed for record in the Register of Deeds Office at _____ on the _____ day of _____, 1975.

Bette McCart, Register of Deeds
Pat Kettler, Deputy
Entered on transfer record this _____ day of _____, 1975.
George Pierce, County Clerk

STATE OF KANSAS, COUNTY OF SEDGWICK, SS:
I, Don C. Moehring II, a Civil Engineer in said State and County do hereby certify that I have surveyed and platted "ORTHOPEDIC SPECIALTIES ADDITION" to Wichita, Sedgwick County, Kansas, into a lot and an Avenue, the same being accurately set forth on the accompanying plat and described as being a Part of Lots 15, 17, and 19, Block 2 in Floral's Addition to Wichita, Kansas.

Don C. Moehring II, Consulting Engineer

Know all men by these presents that we the undersigned, property owners of the land as above set forth in the Civil Engineer's Certificate, have caused the same to be surveyed and platted into a lot and an Avenue, the same to be known as "ORTHOPEDIC SPECIALTIES ADDITION" to Wichita, Sedgwick County, Kansas. The Avenue is hereby dedicated to and for the use of the public. Easements for the construction and maintenance of public utilities, as indicated on the accompanying plat, are hereby granted. All abutter's rights of access to and from Hillside Avenue, over and across the West line of Lot 1, are hereby granted to the City of Wichita.

Charles E. Henning, Susan Henning

STATE OF KANSAS, COUNTY OF SEDGWICK, SS:
Be it remembered that on this _____ day of _____, 1975, before me, a Notary Public in and for said State and County, came Charles E. Henning and Susan Henning, to me personally known to be the same persons who executed the foregoing instrument of writing and duly acknowledged the execution of the same. In testimony whereof I have hereunto set my hand and affixed my Notarial seal the day and year above written.

_____, Notary Public
My Commission expires _____

