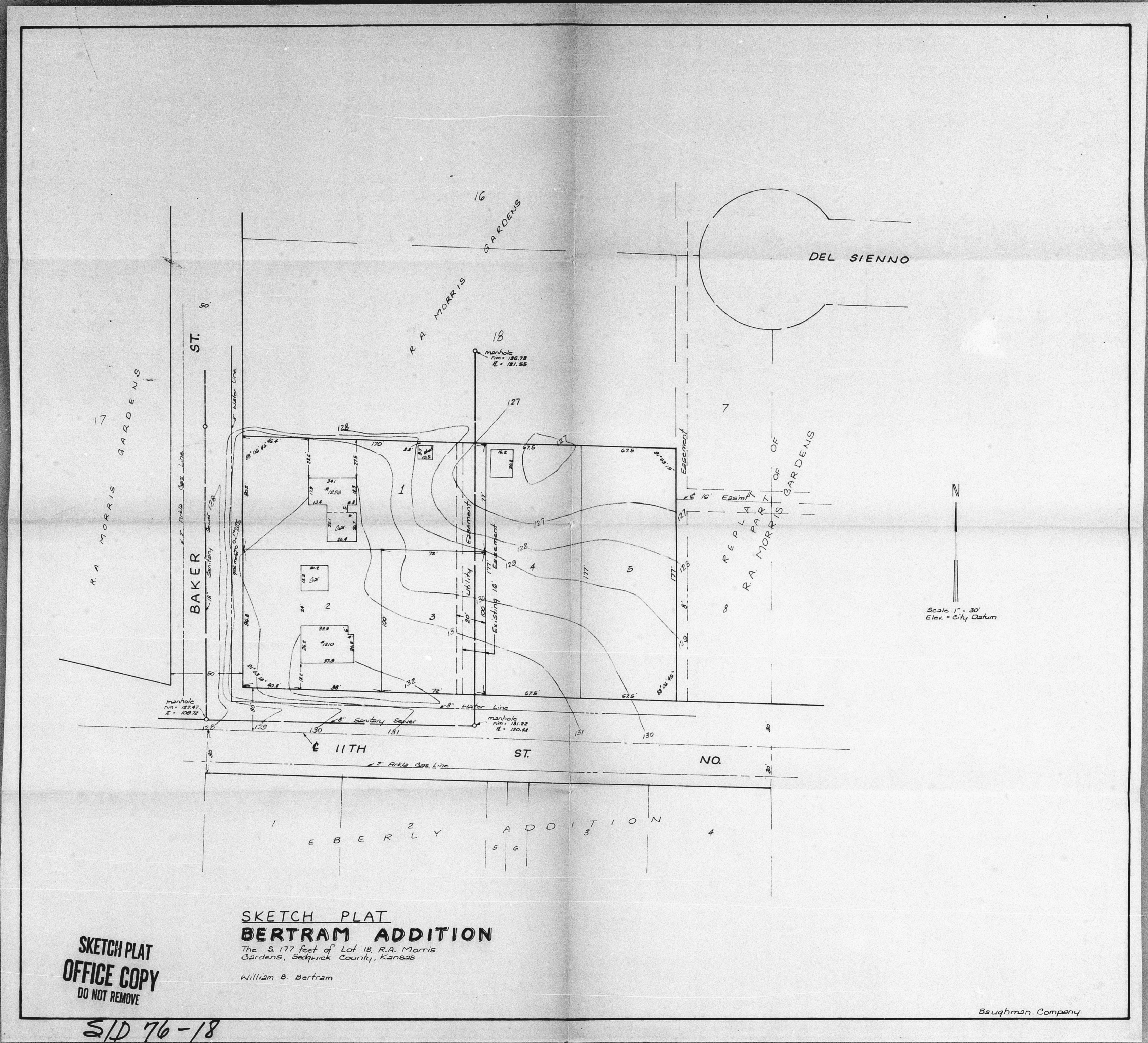


S/D PLATS:  
1976

B



SKETCH PLAT  
OFFICE COPY  
DO NOT REMOVE

SKETCH PLAT  
BERTRAM ADDITION

The S. 177 feet of Lot 18, R.A. Morris  
Gardens, Sedwick County, Kansas

William B. Bertram

N

Scale 1" = 30'  
Elev. = City Datum

Baughman Company

S/D 76-18

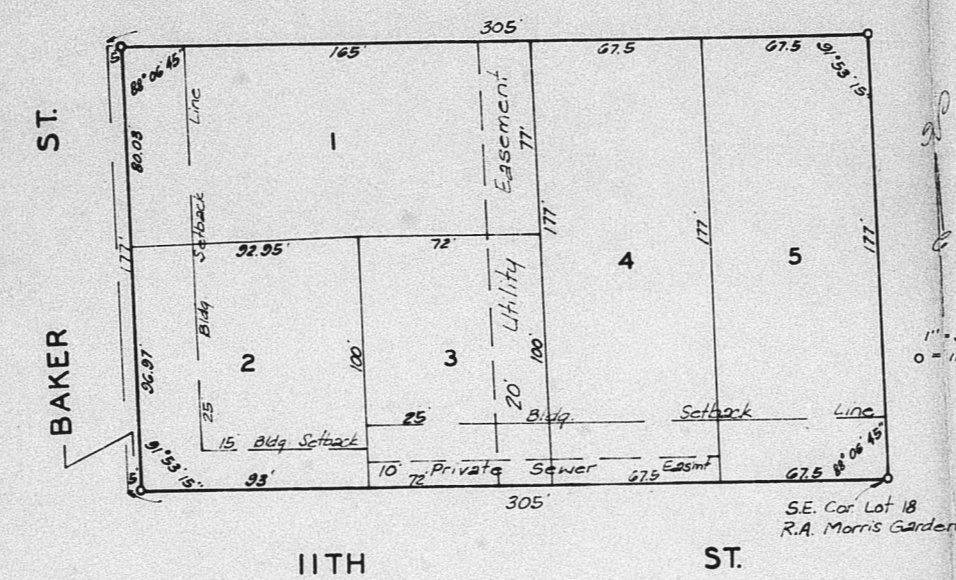
OFFICE COPY  
DO NOT REMOVE

S/D 7/6/18

# BERTRAM ADDITION

WICHITA KANSAS

## FINAL PLAT



This plat of "BERTRAM ADDITION" Wichita, Kansas, has been submitted to and approved by the Wichita-Sedgwick County Metropolitan Area Planning Commission, Wichita, Kansas, on this \_\_\_\_\_ day of \_\_\_\_\_, 1976.

Wichita-Sedgwick County Metropolitan Area Planning Commission.

\_\_\_\_\_ Chairman  
David Bayouth  
\_\_\_\_\_ Secretary  
Robert A. Lakin

This plat approved and all dedications shown hereon accepted by the Board of Commissioners, Sedgwick County, Kansas, this \_\_\_\_\_ day of \_\_\_\_\_, 1976.

\_\_\_\_\_ Chairman  
John Talo  
\_\_\_\_\_ Commissioner  
Earl E. Rush  
\_\_\_\_\_ Commissioner  
Tom Scott  
\_\_\_\_\_ County Clerk  
George Pierce

State of Kansas } SS. This is to certify that this Sedgwick County } plat has been filed for record in the office of the Register of Deeds this \_\_\_\_\_ day of \_\_\_\_\_, 1976 at \_\_\_\_\_ o'clock \_\_\_\_\_ M., and is duly recorded.

\_\_\_\_\_ Register of Deeds  
Bette F. McGart  
\_\_\_\_\_ Deputy  
Pat Kettler

Entered on transfer record this \_\_\_\_\_ day of \_\_\_\_\_, 1976.  
\_\_\_\_\_ County Clerk  
George Pierce

State of Kansas } SS. We, Baughman Company, Sedgwick County, Kansas, do hereby certify that we have surveyed and platted "BERTRAM ADDITION" Wichita, Kansas, and that the accompanying plat is a true and correct exhibit of the property surveyed described, as and being a replat of the south 177 feet of Lot 18, R.A. Morris Gardens, Sedgwick County, Kansas.

\_\_\_\_\_ date  
Baughman Company  
\_\_\_\_\_ Surveyor  
William L. Korber

Know all men by these presents that we, William B. Bertram and Betty L. Bertram, his wife, have caused the land described in the surveyors certificate to be platted into Lots and a street to be known as "BERTRAM ADDITION" Wichita, Kansas. Easements are hereby granted as indicated for the construction and maintenance of all public utilities. The street is hereby dedicated to and for the use of the public.

\_\_\_\_\_ William B. Bertram  
\_\_\_\_\_ Betty L. Bertram

State of Kansas } SS. Be it remembered that Sedgwick County } on this \_\_\_\_\_ day of \_\_\_\_\_, 1976, that before me a Notary Public in aforesaid county and state came William B. Bertram and Betty L. Bertram his wife, to me known to be the same persons who executed the foregoing instrument of writing and duly acknowledged the execution of the same, in testimony whereof I have hereunto set my hand and affixed my notarial seal the day and year above written.

\_\_\_\_\_ Notary Public  
My Comm. Exp. \_\_\_\_\_

This plat approved and all dedications shown hereon accepted by the Board of Commissioners of the City of Wichita, Kansas, this \_\_\_\_\_ day of \_\_\_\_\_, 1976.

\_\_\_\_\_ Mayor  
James M. Donnell  
\_\_\_\_\_ City Clerk  
Donald C. Giesick

- 81-37 012
- A. A 5-foot utility easement shall be indicated adjacent to the east line of Lot 2, the north line of Lot 3 and the north line of Lot 4, except where the existing building is located, which would encroach into the 5-foot easement. Said easement may be reduced next to said building so that the building will not be in the easement.
  - B. The applicant shall submit an avigational assessment covering all of subject property and a covenant assuring adequate construction methods will be utilized to minimize noise pollution in any habitable building.
  - C. The applicant shall guarantee the installation of sidewalks adjacent to the north side of 11th Street and east side of Baker.
  - D. Recording of the plat within 30 days after approval by the Board of City Commissioners.
- 

BERTRAM

OFFICE COPY

FINAL PLAT



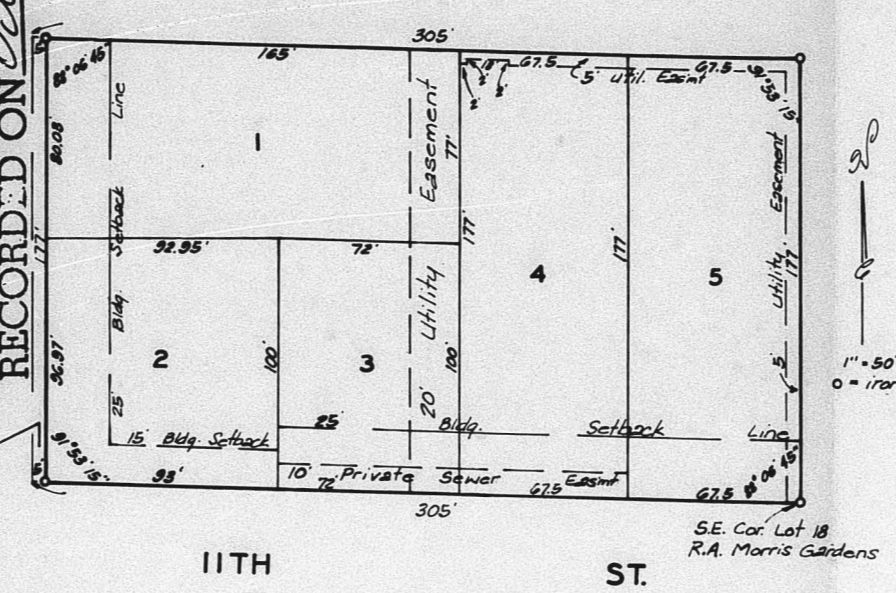
5/10 76-B

APPROVED FOR RECORDING  
ST. BAKER  
RECORDED ON 22.4.1976

COPY  
DEAD - FILE

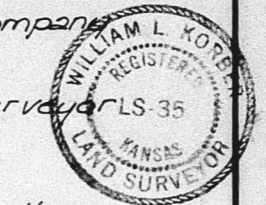
# BERTRAM ADDITION

WICHITA KANSAS



State of Kansas } S.S. We, Baughman Company,  
Sedgwick County } Surveyors in aforesaid county and state do  
hereby certify that we have surveyed and  
platted "BERTRAM ADDITION", Wichita, Kansas  
and that the accompanying plat is a true and  
correct exhibit of the property surveyed de-  
scribed as, and being a replat of the south  
177 feet of Lot 18 R.A. Morris Gardens, Sedg-  
wick County, Kansas.

William B. Baughman Surveyor  
Baughman Company  
Date 4/29/76



This plat of "BERTRAM  
ADDITION" Wichita, Kansas, has been submit-  
ted to and approved by the Wichita-Sedgwick  
County Metropolitan Area Planning Commission,  
Wichita, Kansas, dated this 21st day of MAY,  
1976.

Wichita-Sedgwick County Metropolitan Area Plan-  
ning Commission.



David Bergsack Chairman  
Mayor  
Robert A. Lakin Secretary  
Robert A. Lakin

This plat approved and all  
dedications shown hereon accepted by the  
Board of Commissioners, Sedgwick County,  
Kansas, this 21st day of MAY, 1976.

John Hale Chairman  
Earl E. Rush Commissioner  
Tom Scott Commissioner  
George Pierce County Clerk

State of Kansas } S.S. This is to certify that this  
Sedgwick County } plat has been filed for record in the office of the  
Register of Deeds this 21st day of MAY, 1976  
at 11:00 o'clock AM; and is duly recorded.

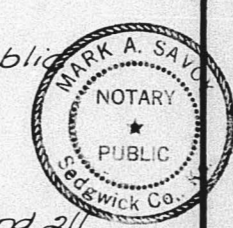
Belle F. Piccol Register of Deeds  
Pat Kettler Deputy  
Entered on transfer record  
this 21st day of MAY, 1976.  
George Pierce County Clerk

Know all men by these  
presents that we William B. Baughman and  
Betsy L. Baughman, his wife, have caused the  
land described in the surveyors certificate to  
be platted into Lots and a street to be known  
as "BERTRAM ADDITION", Wichita, Kansas. Easements  
are hereby granted as indicated for the construction  
and maintenance of all public utilities. The street  
is hereby dedicated to and for the use of the pub-  
lic. A 10 foot private sewer easement across the south 10 feet  
of Lot 3 is hereby designated for sewer benefit of Lot 2, and a  
10 foot private sewer easement across the south 10 feet of  
Lot 4, is hereby designated for sewer benefit of Lot 5.

William B. Baughman Betsy L. Baughman  
William B. Baughman Betsy L. Baughman

State of Kansas } S.S. Be it remembered that  
Sedgwick County } on this 21st day of MAY, 1976, that be-  
fore me, a notary public in aforesaid county  
and state came William B. Baughman and Betsy L.  
Baughman, his wife, to me known to be the same  
persons, who executed the foregoing instru-  
ment of writing and duly acknowledge the exe-  
cution of the same, in testimony whereof, I  
have hereunto set my hand and affixed my  
notarial seal the day and year above written.

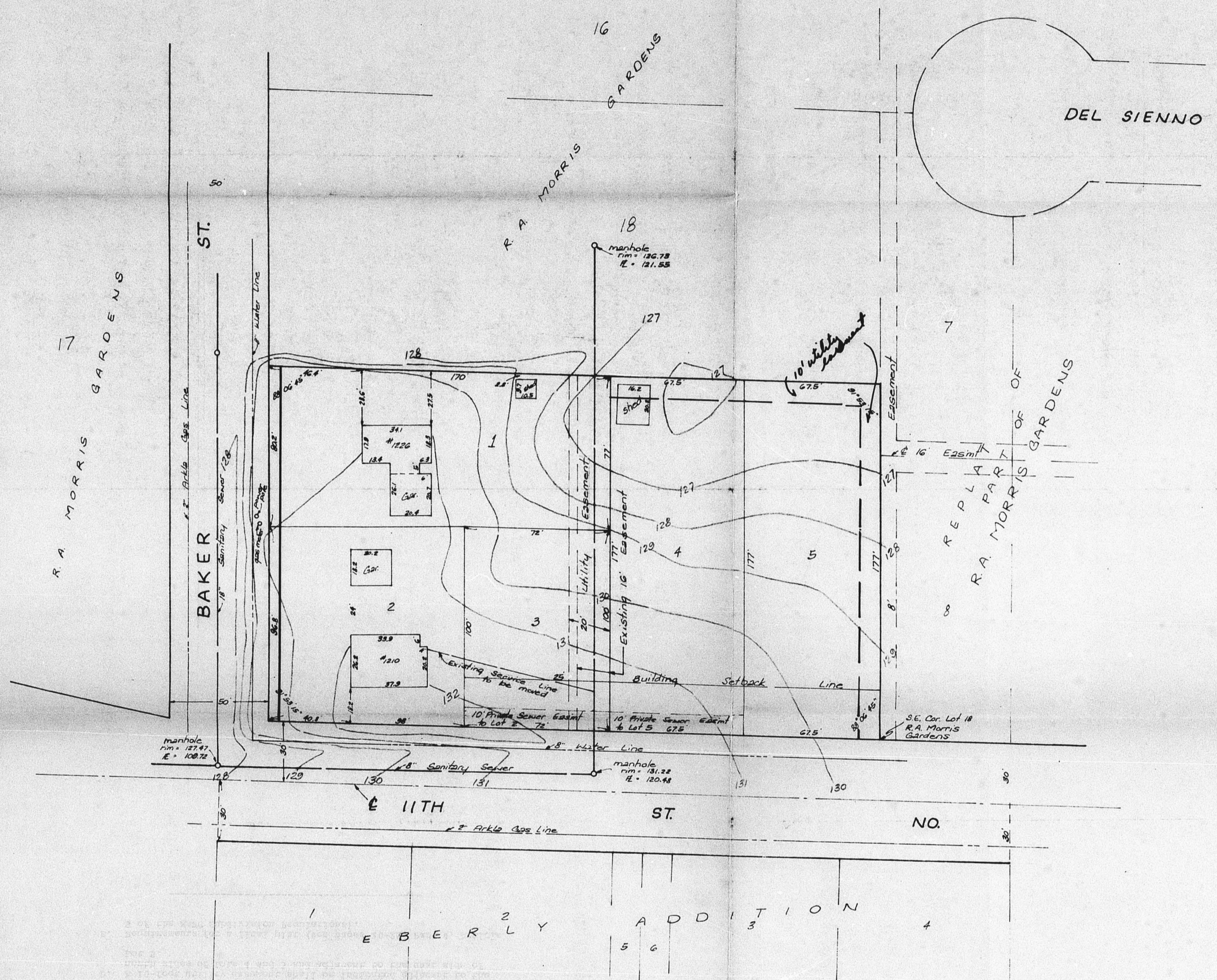
Mark A. Long Notary Public  
My Comm. Exp. 4/1/80



This plat approved and all  
dedications shown hereon accepted by the Board  
of Commissioners of the City of Wichita, Kansas  
this 21st day of MAY, 1976.

James M. Dannel Mayor  
Donald C. Givick City Clerk





Scale 1" = 30'  
Elev. = City Datum

PRELIMINARY PLAT  
OFFICE COPY  
DO NOT REMOVE

PRELIMINARY PLAT  
**BERTRAM ADDITION**  
The S. 177 feet of Lot 18, R.A. Morris  
Gardens, Sedgewick County, Kansas  
William B. Bertram

S/D 76-A

Baughman Company