

SCZ-0031

NO. SCZ-0031 R-1 to LC
Desc NS of Central in an area between Hoover & Ridge Rd.

BY	DOA	BODY	ACTION	NOTICES
2-5-59	MAPC		Approve for BB	
2-12-59	BCoC		Approve for LC	
			CLOSED	

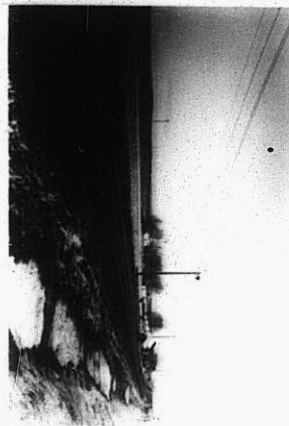
file discarded 2-19-82

RESOLUTION NO. _____ PUBLISHED 7-14-60

T21-202

311

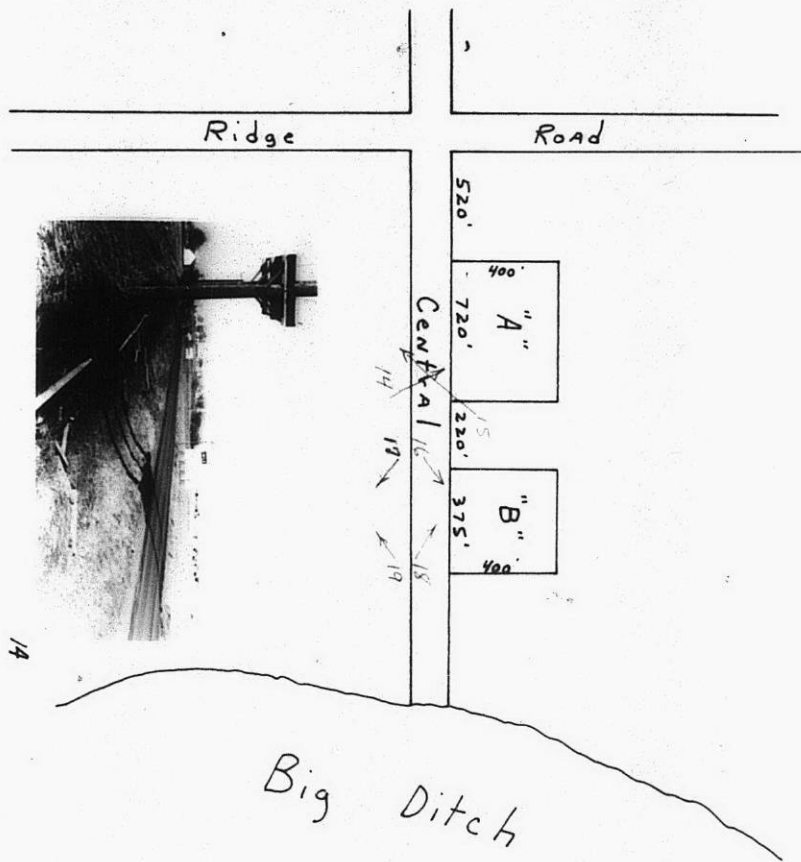
312



15



14

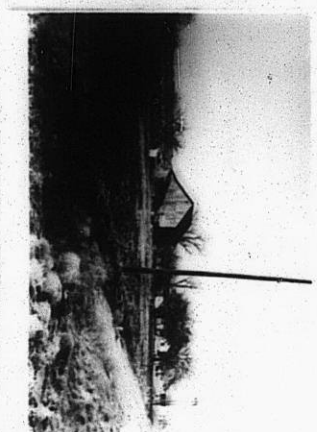


SCZ-0031

310

340

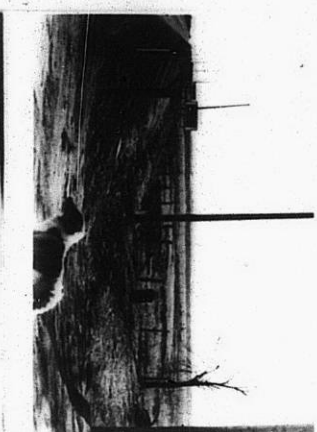
SC2-0031



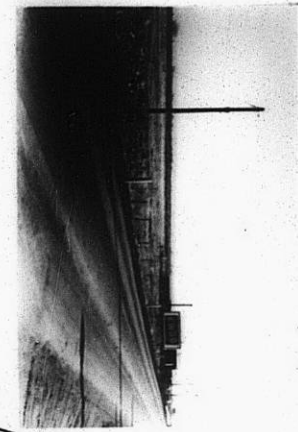
19



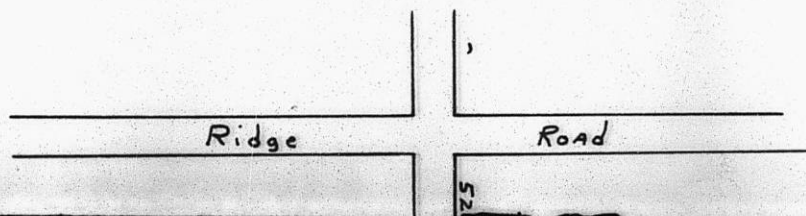
18



17



16



XBE