

SCZ-0034

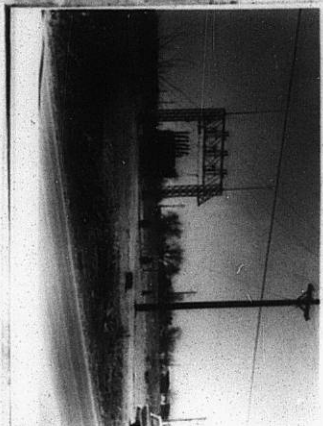
NO. SCZ-0034 R-1 to IC  
Desc Metes & bounds description at SE corner of  
Hydraulic & McArthur  
BY Dick A. Morris  
DOA BODY ACTION NOTICES  
3-5-59 MAPC Approve  
3-12-59 BCoc "  
CLOSED  
*file discarded 2-19-82*  
RESOLUTION NO. \_\_\_\_\_ PUBLISHED 7-14-60  
T21-202

311

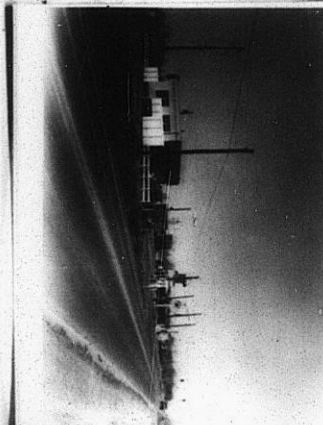
34X

XBE

XBE



15



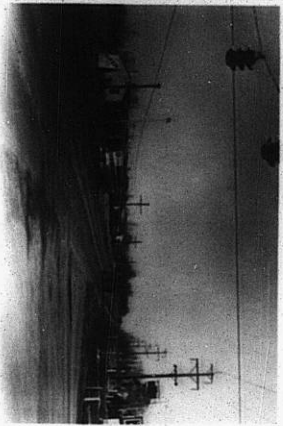
16



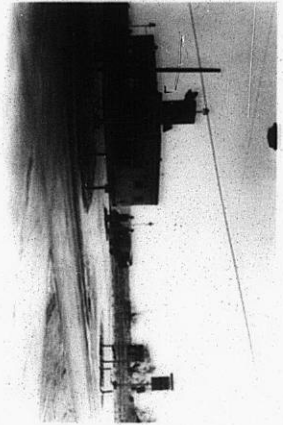
17



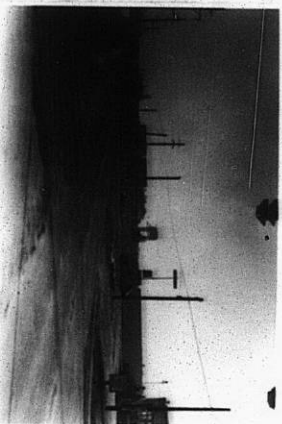
18



19



20



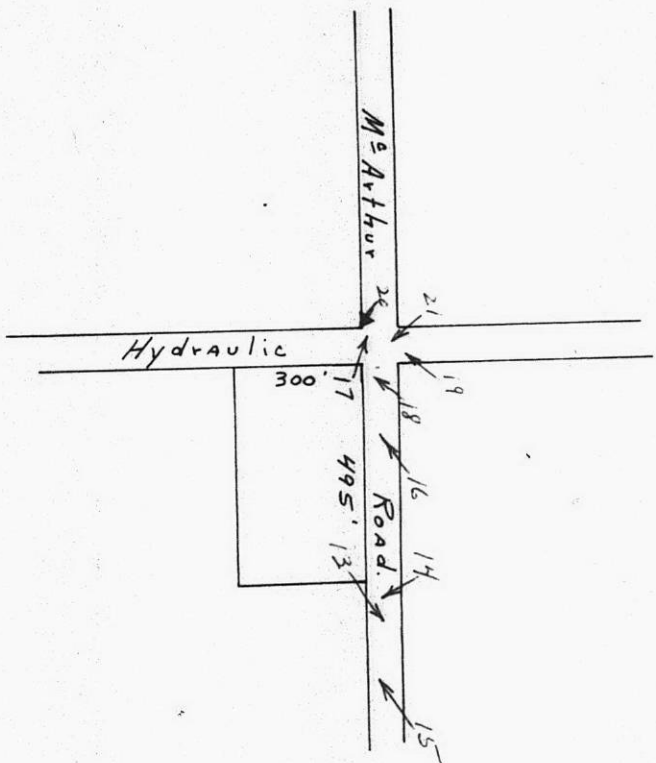
21

562-0034

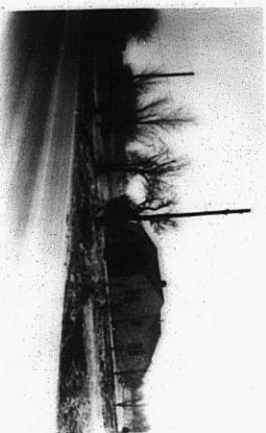
XBE

XBE

SCZ-0034



13



14

34

20

18

16