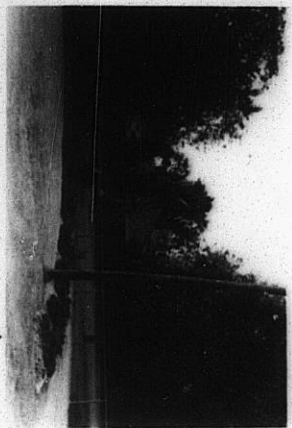


~~HAZLWOOD~~ SCZ-0069

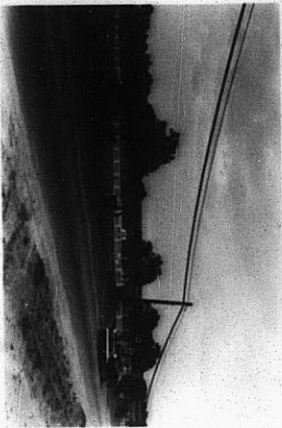
NO. SCZ-0069 LC to R-1
Desc NE corner of 21st & Oliver
BY Initiated by PC
DOA BODY ACTION NOTICES
9-17-59 MAPC Defer
11-5-59 MAPC Denied
CLOSED 11-5-59

file discarded 2-19-82.
RESOLUTION NO. _____ PUBLISHED _____
T21-202

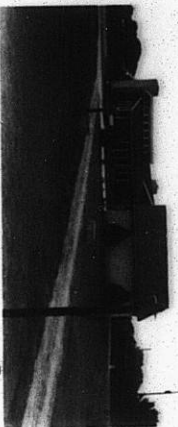
211
14E



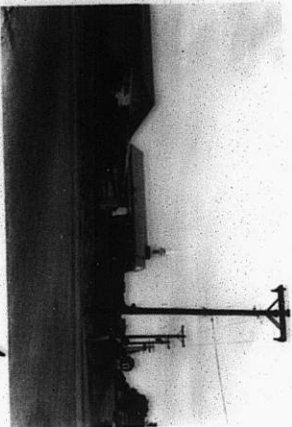
1.



2.



3.



4.

PICTURES # 1-4 TAKEN 4-1-59

562-0066

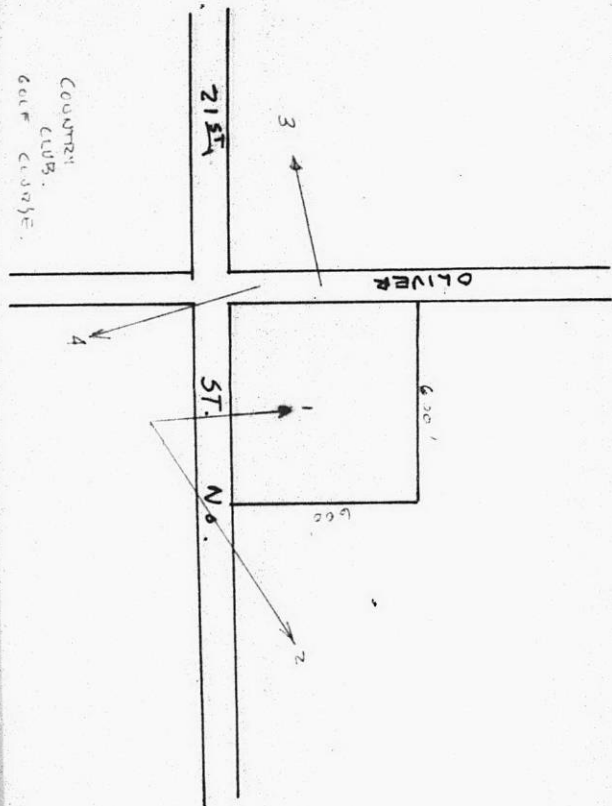
215

3

COUNTRY CLUBS GOLF CLUBS

37E

37E



COUNTY
CLUB.
GOLF COURSE.

6900-205 ~~SCZ-0069~~

112

112