

SC 2-0100

NO. SCZ-100 "B-1" to "LC"

Desc West side of 96 Highway between Charles and
Amidon Streets, 3357, 3401, 3411, 3417 Amidon

BY B. H. Zickefoose, 1360 S. Broadway PO 3-5535
DOA BODY ACTION NOTICES

3-18-60 MAPC approve

8-25-60 Bd Co Com approve

file discarded 2-19-82

RESOLUTION NO. _____ PUBLISHED 9-1-60

131
132

TAKEN 8-1-60

902-0100



11 11



12 12



13



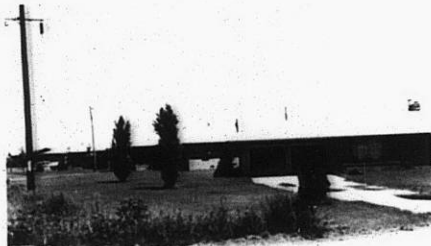
14



15



16



17



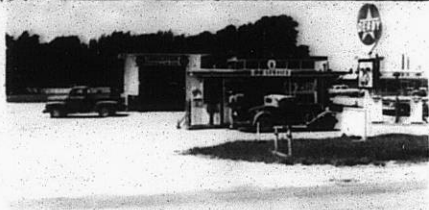
18



19

310

34X



14



15



16



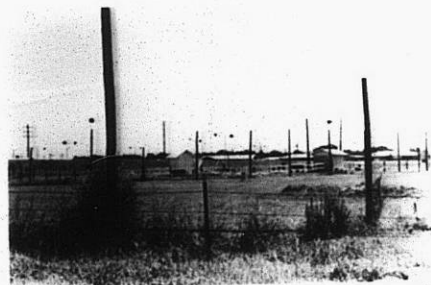
17



18



19



20

SC 2 - CBC

319

34x