

5CZ 102

NO. SCZ-0102 R-1 TO C

Desc SOUTH SIDE OF McARTHUR ROAD BETWEEN MIDLAND
STREET AND WICHITA STREET.

BY SIDNEY L. FOULSTON, JR. 1115 BITTING BLDG. AM71243
DOA BODY ACTION NOTICES

9-15-60 MAPC Depr

10-6-60 MAPC Depr

10-20-60 MAPC - Depr 30 days for submission
of plan

11-17-60 MAPC Depr 30 days

12-15-60 MAPC Approve

RESOLUTION NO. 111 PUBLISHED 2-23-61

2-9-61
file discarded 2-19-82

319

34X

102-270



1

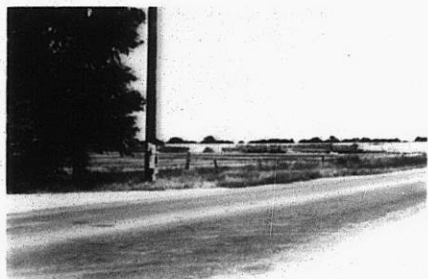


2



3

NO. 2 102K/C



4



5



6



7



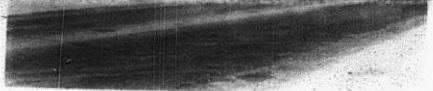
8



9

31

34x



4



5



6



7



8



9

SCZ-0101



10



11



12

319

347