

SCZ-0122

NO. SCZ-0122 R-1 to LC  
Desc N SIDE OF 21ST ST. BETWEEN WOODLAWN AND ROCK ROAD.

BY E. J. HINKLE  
DOA BODY ACTION NOTICES

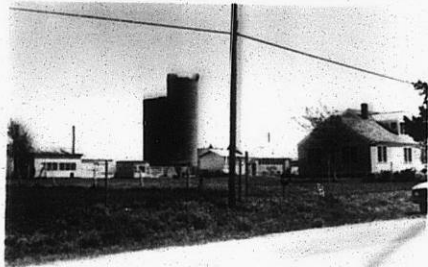
6-1-61 MAP Deft  
9-7-61 MAP Recommend Serial  
9-21-61 Bof CO Denied

file discarded 2-19-82  
RESOLUTION NO. \_\_\_\_\_ PUBLISHED \_\_\_\_\_

139

139

SC2-022



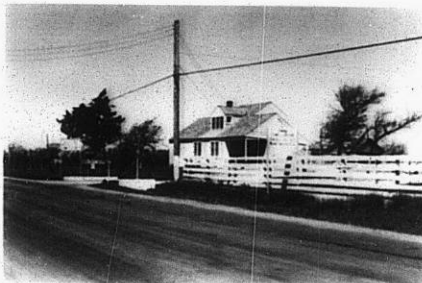
1



2



3



4

349

34x