

NO. SCZ-0222 (Assoc. CU-III) "R" to "R-1"

DESC. South side of 87th St. South between Kansas
Turnpike and Hydraulic

BY: Arnett Acres, Inc. et al by John Callahan

D.O.A.	BODY	ACTION	NOTICES
8-8-68	DCPC	<i>Deferred to 9-22-68</i>	
8-13-68	HCPC	<i>denial</i>	
8-22-68	MARC	<i>Deferred to 9-12-68</i>	
8-22-68	DCPC	<i>denial</i>	
9-12-68	MARC	<i>Deferred</i>	

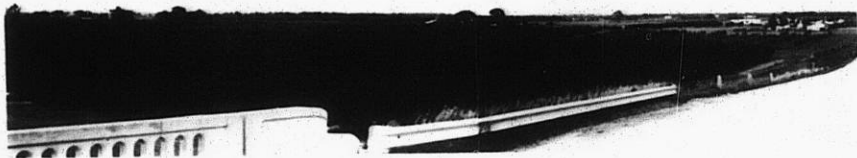
RESOLUTION NO.: T9-202 PUBLISHED: *file discarded 2-23-82*

SCZ-0222

311

341

1.



2.



3.

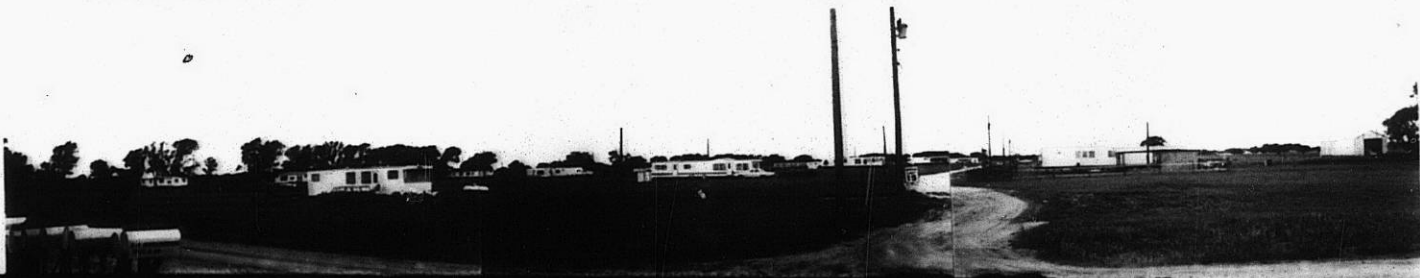


502-0222

4.



5.



35

X 31

3.



502-0222

4.



5.

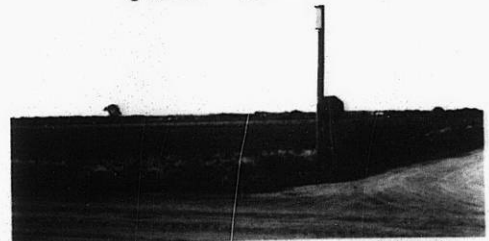


502-0222



6.

502-0222



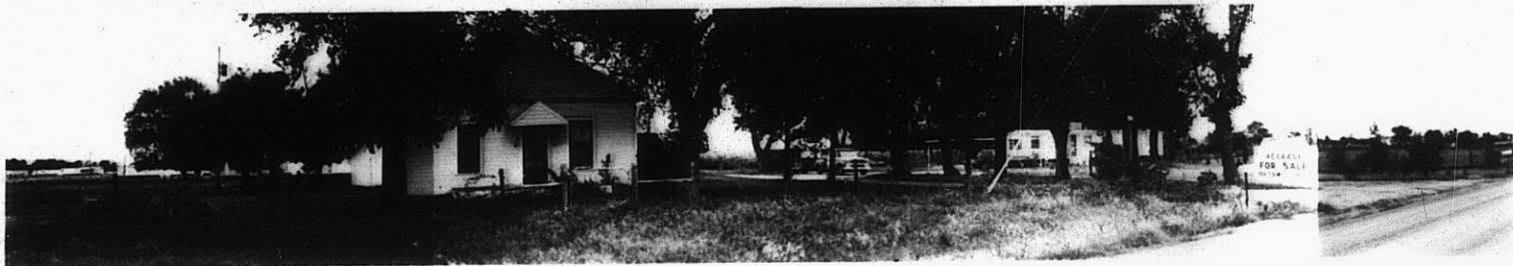
502

502

5.



No. 2-1-525



6.

502-0222



7.



8.



9.



10.



11.



12.

310

34X