

NO. SCZ-0236 Establish Most Appropriate

Zoning Classifications

Desc Within the 3-mile ring of the City of

Goddard in the southwest quadrant of Sedgwick County

BY MAPC by Secretary

| DOA      | BODY                  | ACTION   | NOTICES |
|----------|-----------------------|--|---------|
| 10-13-69 | Goddard<br>Plan Comm. | <i>Order 1 week</i>  |         |
| 10-20-69 | <i>Goddard PC</i>     | <i>Approved as submitted with<br/>additions - see file</i> |         |
| 10-23-69 | MAPC                  | <i>Approved as recommended<br/>by Goddard Plan Comm</i>    |         |
| 11-5-69  | PLoC                  | <i>Approved as recommended</i>                             |         |

RESOLUTION NO. \_\_\_\_\_ PUBLISHED November 12, 1970

T21-202

SCZ-0237

319

34x

NO. SCZ-0237

"AA" to "LC" (X-6-C)

DESC. On the east side of Hydraulic between Charleston  
and Broadbeck.

BY: Max L. Cole

D.O.A.

BODY

ACTION

NOTICES

10-9-69

MAPC

Approved only to report up 1 year

10-22-69

BLC

Approved as recommended

Closed

RESOLUTION NO.:

PUBLISHED: June 9, 1970

T9-202

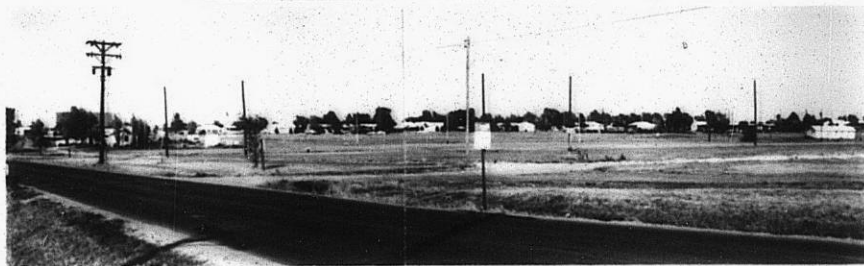
file discarded 2-23-82

SCZ-0237

319

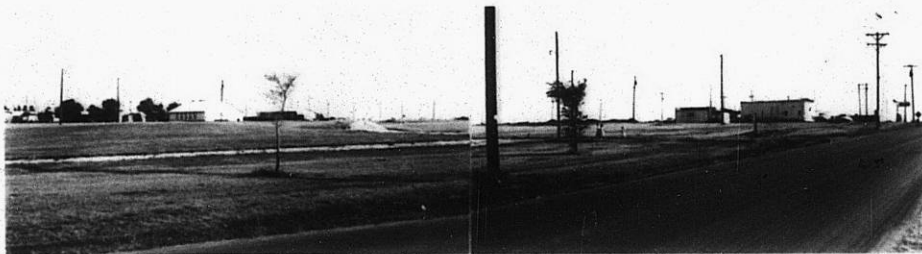
34x

1.



SC2-0237

2.



3.



4.



319

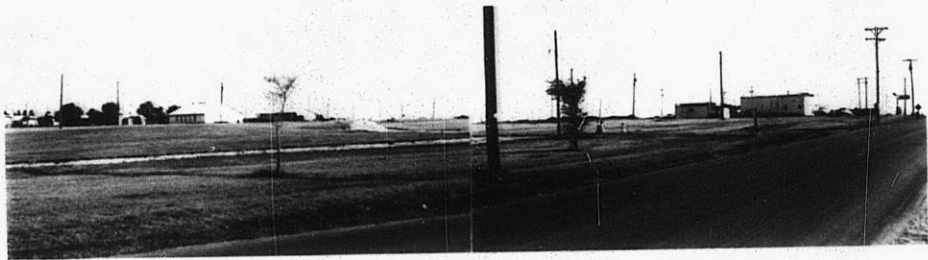
34x

1.

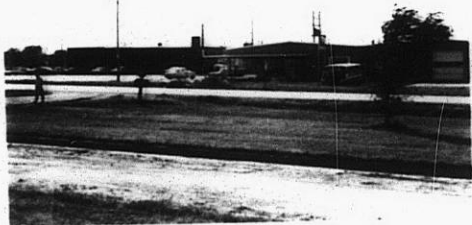


SC2-0237

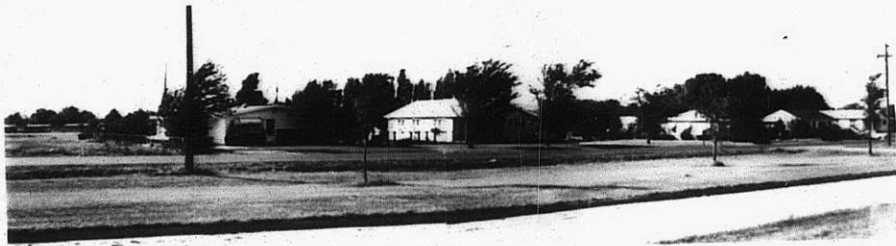
2.



3.



4.



310

34x