

NO. SCZ-0325

"R-1" & "LC" to "LC", "BB" &  
"AA"

DESC. Northeast corner of Harry and Webb Road

BY: George Hall, et al.

D.O.A.	BODY	ACTION
<del>4-25-74</del> 3-28-74	MAPC	App except No. 185' of the area right-of-way for LC, which was approved for BP out to plot
5-15-74	BCoC	approved as recommended
See C.U. 160		closed
Sept. 27, 1976	Resolution Published	
TD-202		File recorded 2-23-82

SCZ-0325

131

132



1.



2. SC2-0325



3.

4.



5.



6.



7.



573

X 34



6.

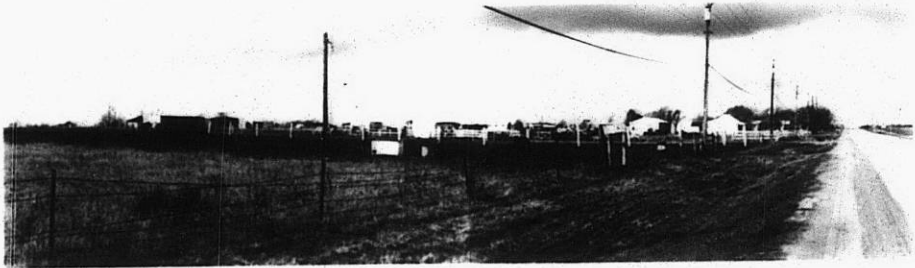


7.



822-0325

8.



9.



10.



319

34X