

NO. SCZ-0333

"R-1" & "LC" to "R-1"

DESC. Southeast corner of Greenwich Road and Harry St.

BY:	MAPC		
	D.O.A.	BODY	ACTION
	12-2-74	MAPC	<i>Approved</i>
	1-8-75	BCoC	<i>referred to County Counselor for review</i>

No action by Co Counselor. Filed closed 1-89(!)

Resolution Published

T9-202

SCZ-0333

31

34x

SC2-0353

1.



2.



3.



4.



5.



6.

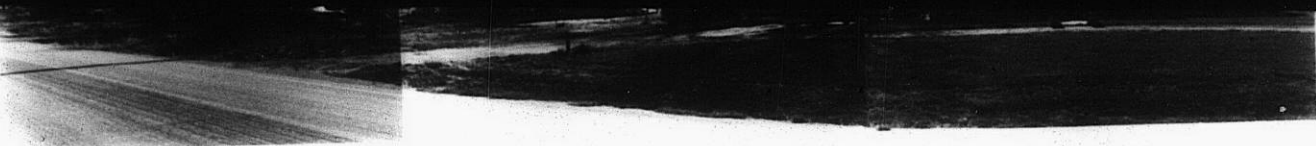


SC2-0353

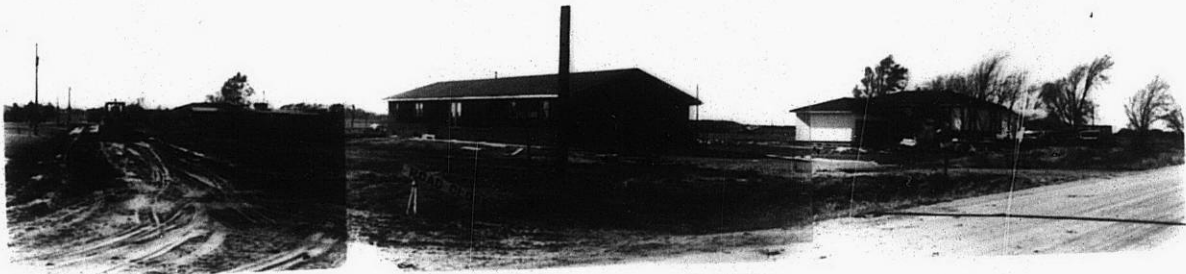
157

158

5.

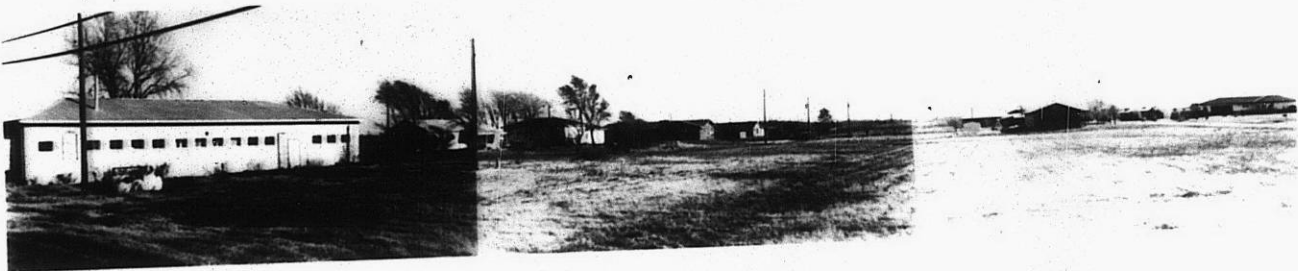


6.

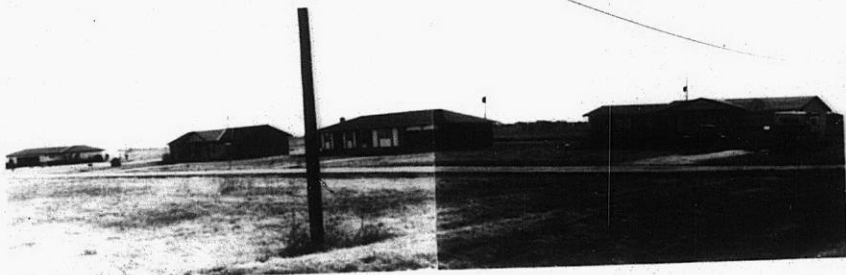


362 - 035.3

7.



8.



9.



310

34x