

NO. SCZ-0341 "R", R-1" & "LC" TO "E"
Amended to "C"

DESC. West side of Seneca in an area approx. 1/2 mile
north of 63rd St. South

BY: Floyd B. Grillot, et.al. by Ronald E. Nieto

D.O.A.	BODY	ACTION
4-10-75	HCPC	<i>deferred</i>
4-24-75	HCPC	<i>denied E; App. C for depth of 500' subject to platting.</i>
5-8-75	MAPC	<i>App. C to depth of 500' ft; subject to platting</i>
5-28-75	BCoC	
6-11-75	BCoC	<i>App. as recommended resolution published</i>
<i>October 18, 1976</i>		
<i>file discarded 2-23-82</i>		<i>Closed</i>

SCZ-0341

131
132

SC2-0341

1.



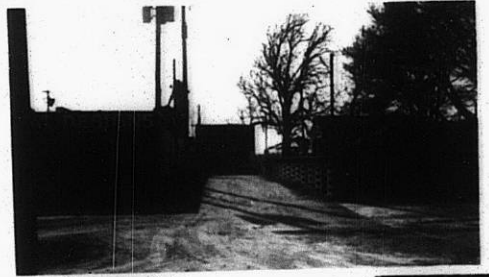
2.



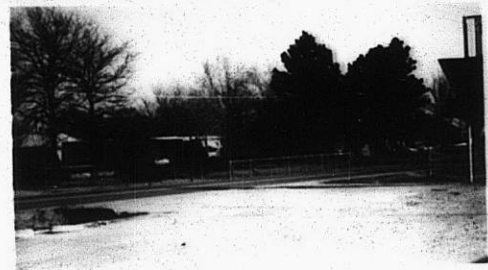
3.



4.



5.



34

34