

NO. SCZ-0343 "R-1" to "AA"

DESC. South side of Harry approximately 1/4 mile east
of Webb Road.

BY: George L. Hall et.al. by PEC

D.O.A. BODY ACTION

4-10-75

MAPC

app subject to platting

4-30-75

BCoC

Approved as recommended

File discarded 2-23-82 Closed

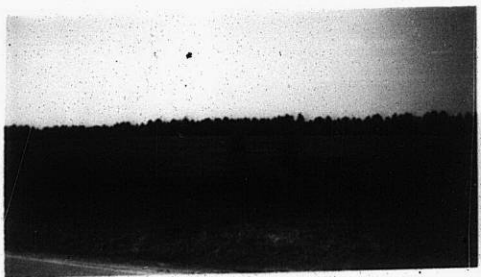
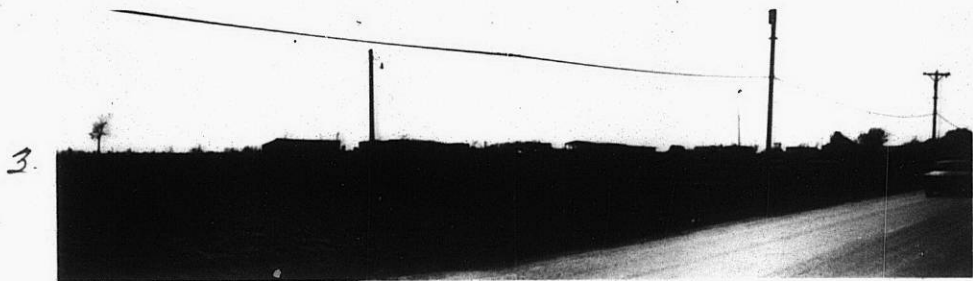
June 26, 1978 Resolution Published

794202

SCZ-0343

112
112

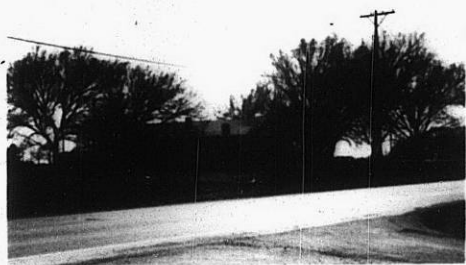
502-0343



4.



5.



6.

502

343



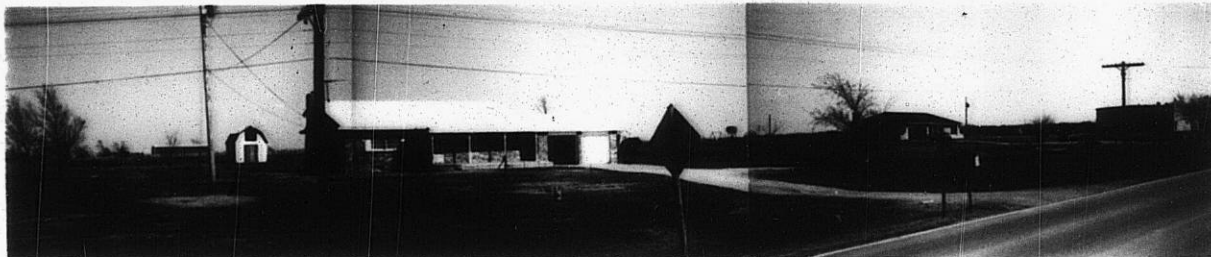
4.



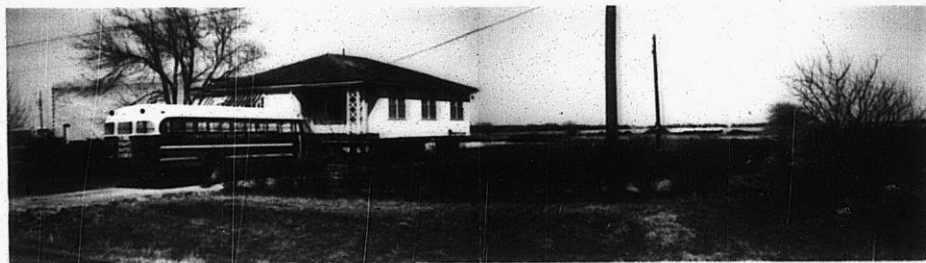
5.



6.



7.



9.

SCZ-0343

310

X 31