

NO. SCZ-0355 "LC" to "R-1"
DESC. NE, NW, SE, SW corners of 13th St. North and
Rock Road.
BY: Metropolitan Area Planning Commission
D.O.A. BODY ACTION
3-4-76 MAPC withdrawn
Case closed
file discarded 2-23-82
Resolution Published
T9-202

SCZ-0355

TE
TE

902-0355

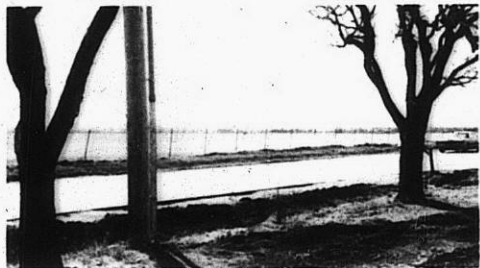
1.



2.



3.



4.



5.



6.



X 34

902-0355

5.



6.

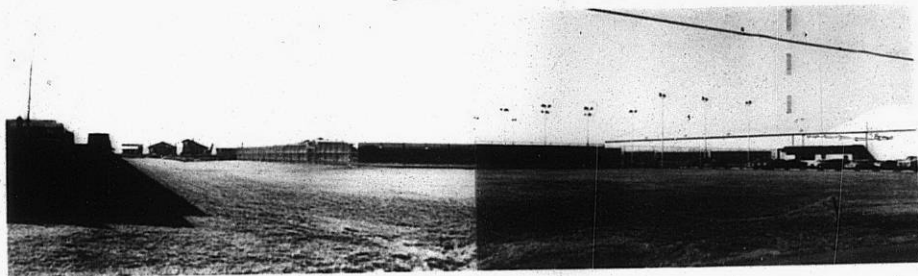


SC2 - 0355

7.



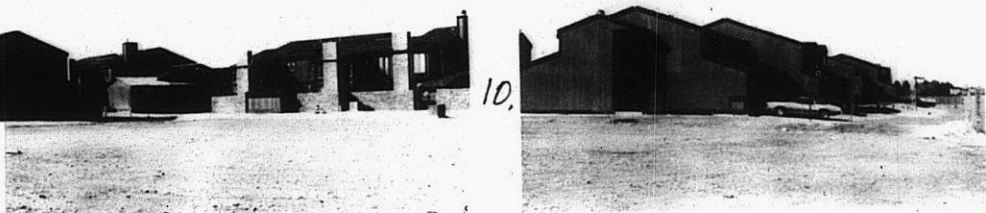
8.



9.



10.



310

X 31