

NO. SCZ-0357

"R-1" to "C"

DESC. Northeast corner of K-15 and Herral St.

BY: Thomas C. Wilhite, etal

D.O.A.

BODY

ACTION

4-8-76

DERBY P.C.

*Deferred to 4-22-76*

*4-22-76*

*Denied*

4-15-76

MAPC

*Deferred to 4-29-76*

*4-29-76*

MAPC

*approved - except north - east side of field  
sent to Board of Education*

5-19-76

BCC

*Referred back to Derby*

*file discarded 3-23-82 (over)*

Resolution Published

T9-202

*Withdrawn & Closed*

SCZ-0357

311

311

SCZ-0357

6-3-76 - Doby - Dennis

6-10-76 - MHC - Dennis

6-30-76 - PDC - net considered

Withdrawn and closed  
6-12-76

STE

STE

SC2-0357



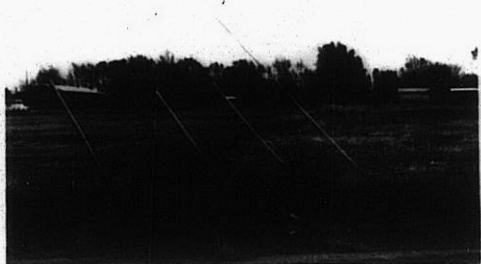
1.



2.



3.



4.



5.



6.

SC2-0357



311

312

1



2.



3.



7

4.



5.

SC2-0357

6.

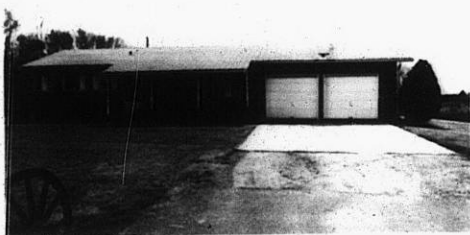


7.

8.

9.

10.



11.



12.



312

312