

NO. SCZ-0359

"R" to "E"

DESC. East side of East Street and north of Missouri  
and Pacific Railroad

BY: Sanner's Farm Supply, Inc.

D.O.A.      BODY      ACTION

5-13-76      MAPC      *Deferred to be advertised*

6-10-76      MAPC      *Agree. sub to getting*

~~6-7-76~~      ~~MAPC~~      ~~approved~~

*closed*

October 18, 1976 Resolution Published

T9-202

*file discarded 2-23-82*

SCZ-0359

319

348

502-0359

1.



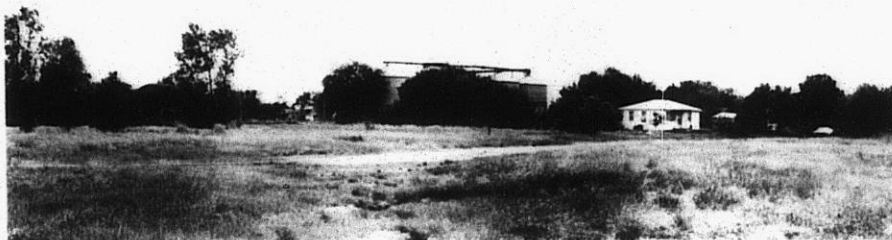
2.



3.



4.



5.



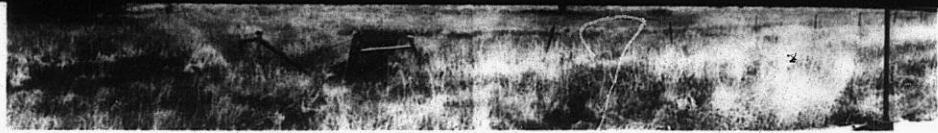
6.



502

502

5.



6.



7.

502-0359

8.



502

502