

NO. SCZ-0360

"R-1" "IC" & "R" to "R"

DESC. an area between Hillside and Oliver, north and
south of 37th St. North.

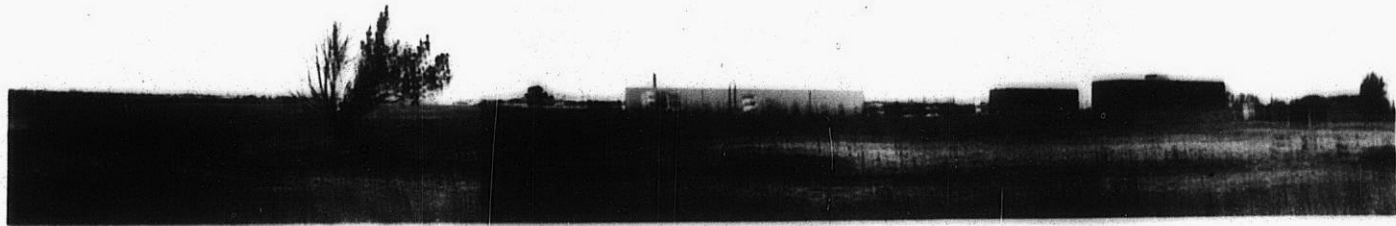
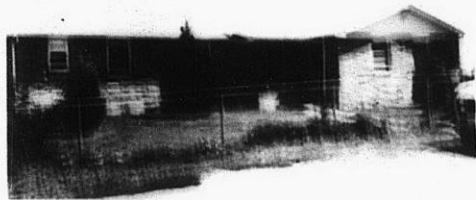
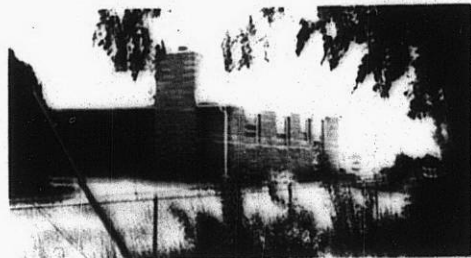
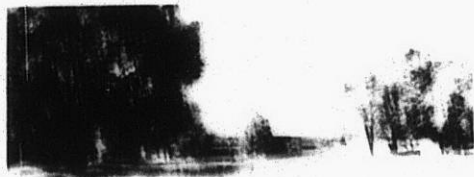
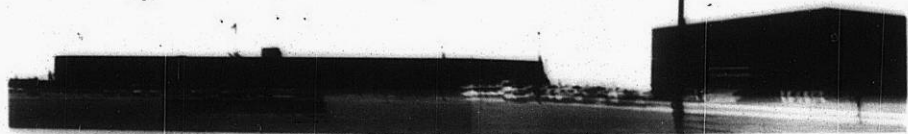
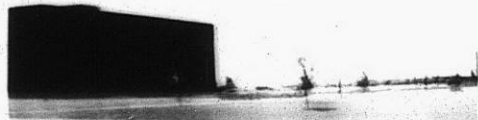
BY: Koch Industries, Inc., et al

D.O.A.	BODY	ACTION
5-27-76	MAPC	approve E + BB subj to plat
6-16-76	B.C.C.	Approved as recommended
		Withdrawn + closed
		Re memo 3-13-80
		Resolution Published
T9-202		file discarded 2-23-82

SCZ-0360

310

XFE



319

34X

4.

5.

6.

7.



8.



9.



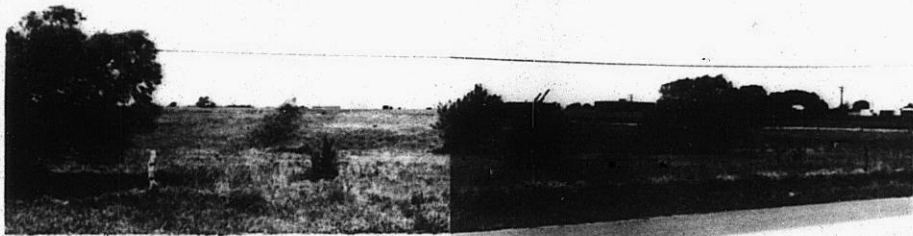
10.

SCZ-0360

11.



12.



13.

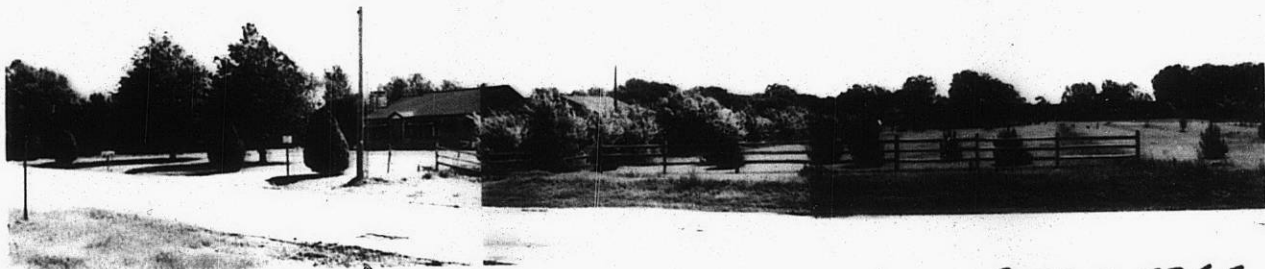


SCZ-0360

310

XIX

13.

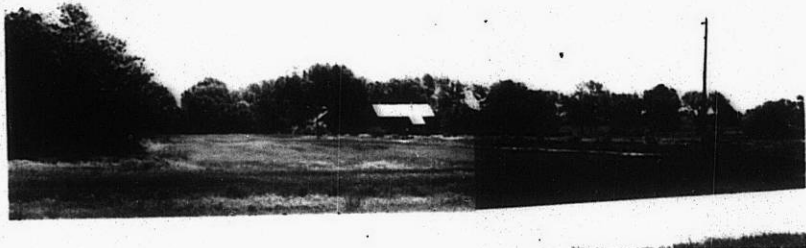


SC2-0366

14



15.



16.



310

34E