

NO. SCZ-0366
(map 5740; M-7-B Book 4)

"LC" to "E"

DESC. Between Oliver & W-15 Highway in an area approx.
1/8 mile north of 63rd St. South.

BY: Mid States Construction Co. of Derby, Inc.
D.O.A. BODY ACTION

11-4-76 DERBY P.C. *Approve sub to platting*

11-11-76 MAPC *Approve sub to platting*

12-1-76 *Bde Co. approved as Recommended*

Denied and closed. Inquiries to
Sept 21, 1979 *complete plat* Resolution Established **OVER**

T9-202 *file discarded 2-23-82* **Closed**

SCZ-0366

413

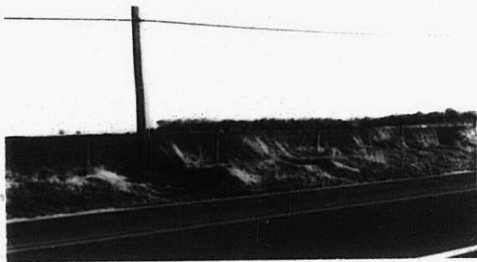
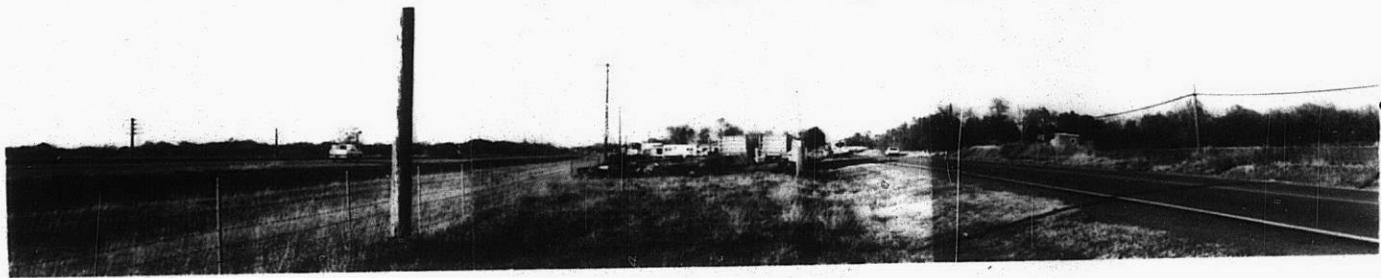
413

SCZ-0366

9-10-79 Case reopened (See memo)
in file

502 - 0366

1.



2.



3.



4.

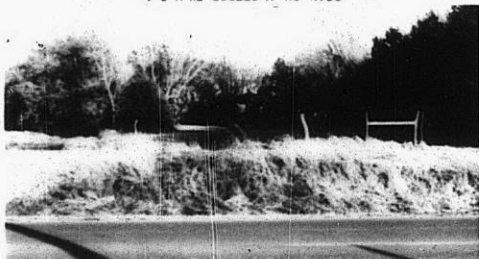
5.



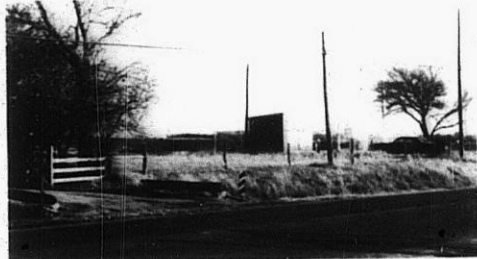
LOGAN OH - MCGREGOR TX U. S. A.



6.



7.



8.

507 - 0366

34

34x

5.



6.



7.

SCZ-0366



8.

9.



10.



11.



12.



310

34X