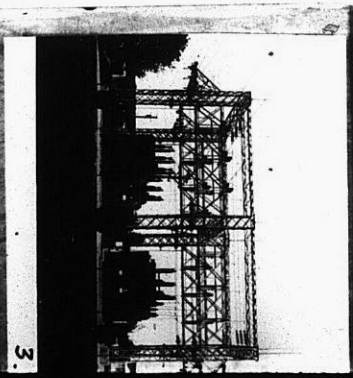
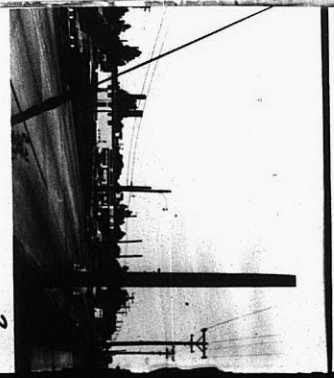
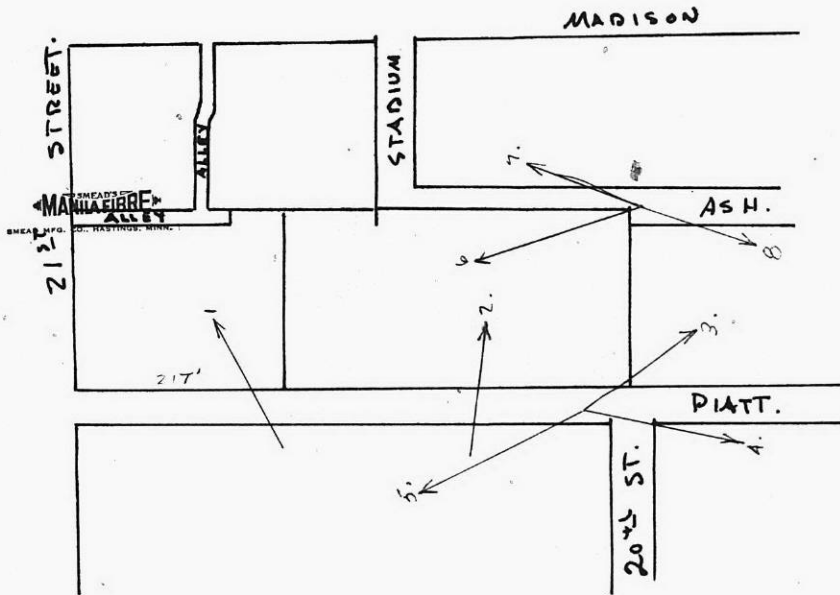


2 - 0189

NO.	Z-0189	"B", "AA" to "TC" & "B"	
Desc	In an area on south side of 21st in an area bet. Ash & Platt		
BY	Mutual Life Ins. Co.	NOTICES	
DOA	BODY	ACTION	
9-17-59	MAPC	Approve in part	
10-15-59	MAPC	Reconsidered & approval to be sent to BCC with final plat of Razook's Addition	
CLOSED 4-9-64 AT REQUEST OF APPLICANT			
<i>file discarded 2-1-82</i>			
RESOLUTION NO.	T21-201	PUBLISHED	

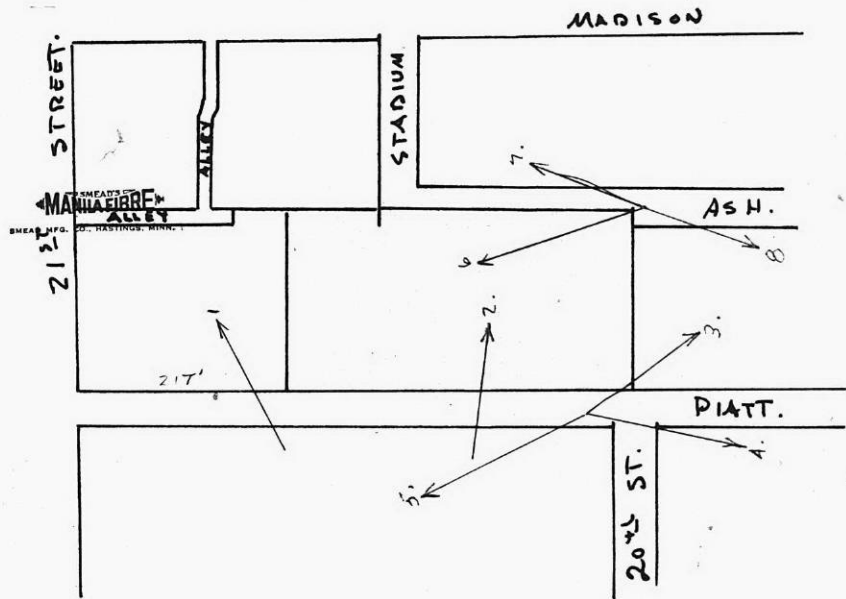
113

113

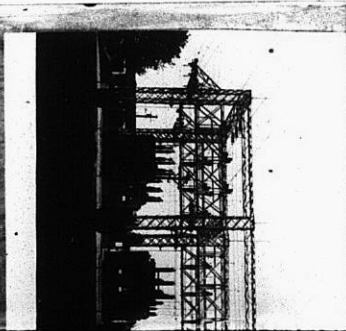
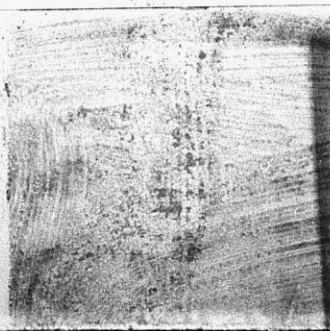


Pictures # 1-8
 Taken 10-7-54
 Side

2 - 0189

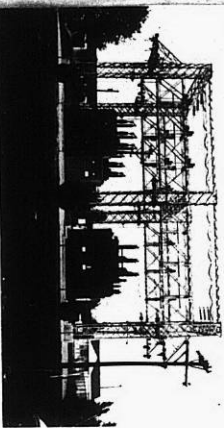
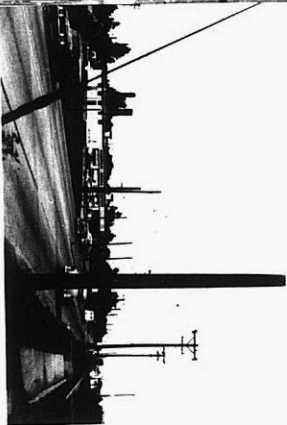
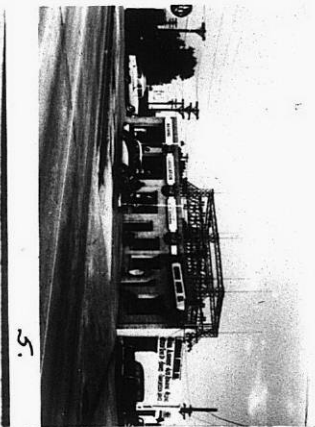


Pictures # 1
TAKEN 10-7-58
Eid



XBE

2025 ST



PICTURES # 1-8
TAKEN 10-7-54
E. Allen

XBE

XBE