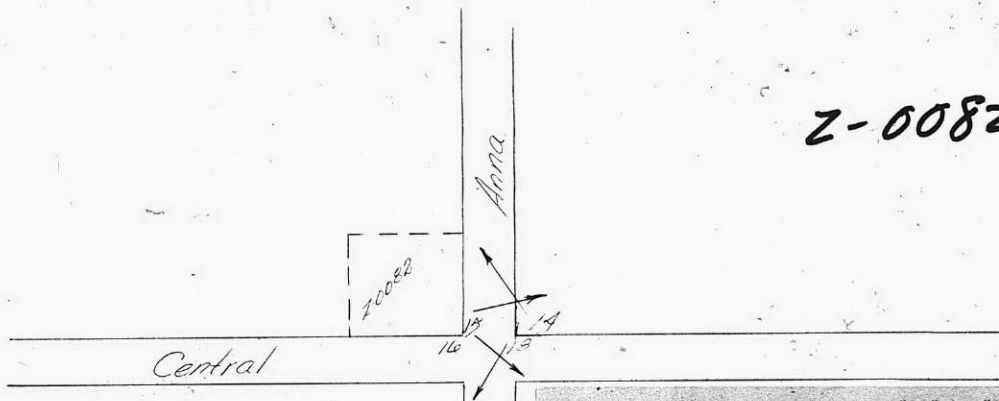


Z-0082



NO. Z-0082 "AA" to "LC"

Desc NW corner of Anna & Central

---

BY John & Nadine Baba

DOA	BODY	ACTION	NOTICES
6-5-58	MAPC	Denied	
6-17-58	BCC	"	

---

*file discarded 2-1-82*

---

RESOLUTION NO. T21-201 PUBLISHED

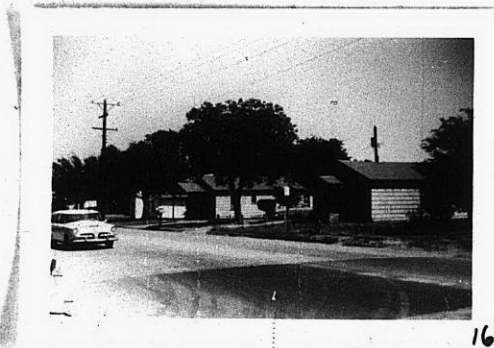
311

34X

Z-0082

Z-0082

R



Z-0082

B4X

17A