

Z-0138

NO.	Z-0138	"RB" to "LC"		
Desc	WS Meridian ES Richmond bet. McCormick & Irving			
BY	John M. Moore, etal.			
	DOA	BODY	ACTION	NOTICES
	2-5-59	MAPC	Deny	
	2-17-59	BCC	Ref back to MAPC	
	3-5-59	MAPC	Defer 90 days	
	6-4-59	MAPC	Deny	
	6-30-59	BCC	"	
	<i>file discarded 2-1-80</i>			
RESOLUTION NO.			PUBLISHED	
T21-201				

131

132

XTE

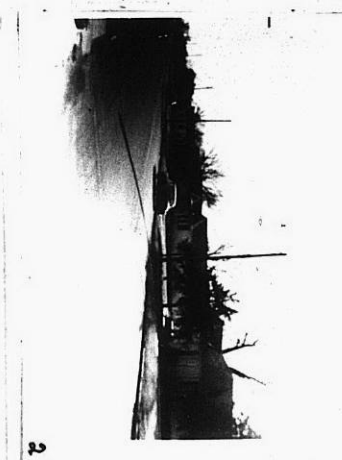
XTE



0



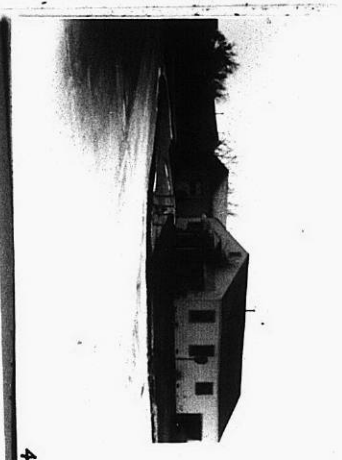
1



2



3



4



5

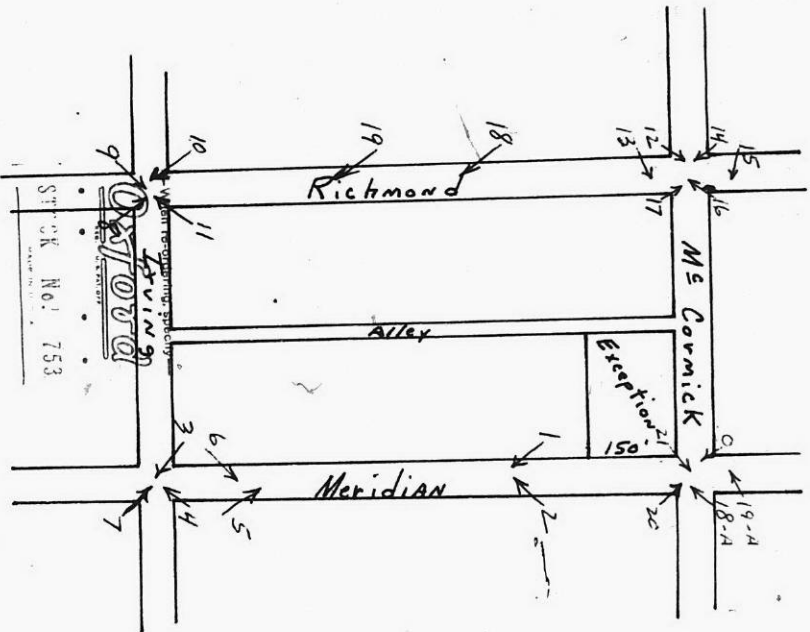


6

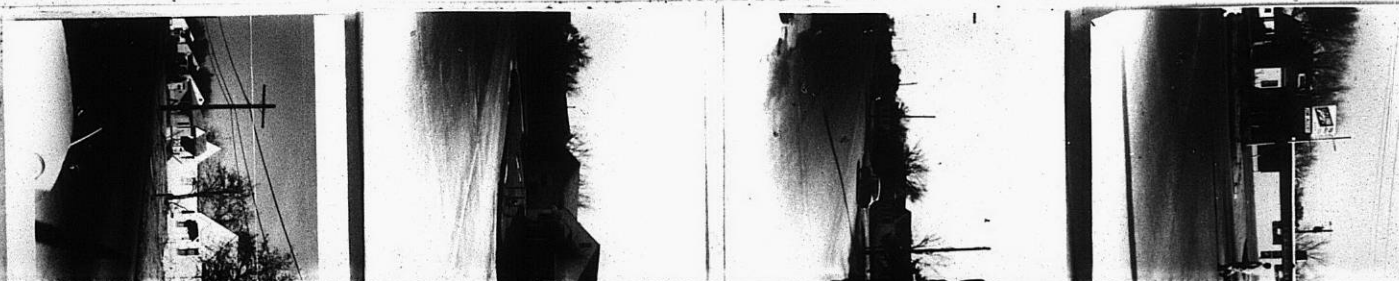


7

Z-0138



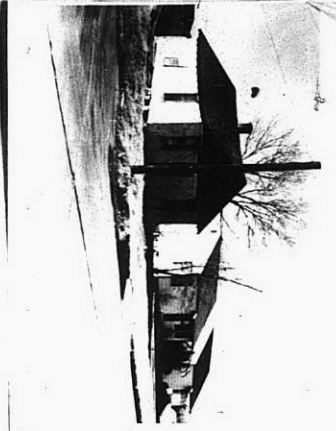
Z-0138



XBE
 173

XTE

XTE



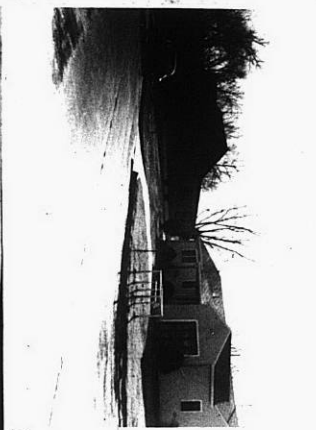
8



9



10



11



12



13



14



15

2-0138

2-0138

21

20

19

18

XTE

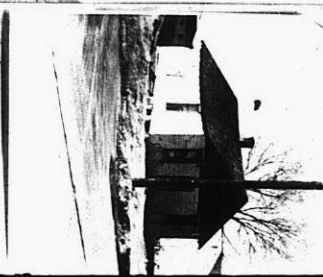
XTE



14



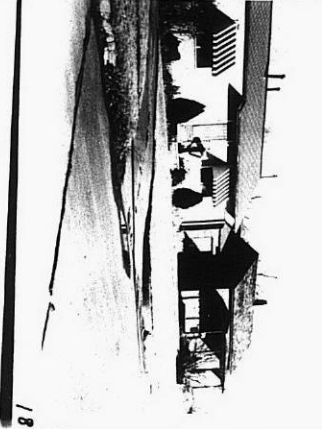
A-



17



A-19



18



20



19



21



Z-0138