

2-0155

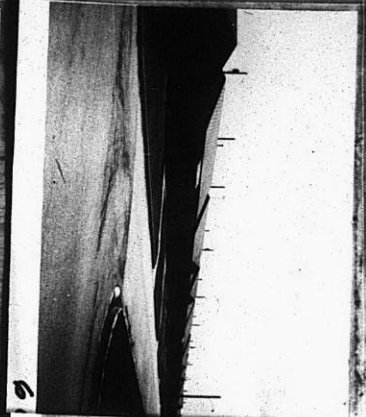
NO.	<u>Z-0155</u>	<u>"AA" to "IC"</u>
Desc	<u>S side of 31st St. So. bet. Meridian & St. Clair</u>	
BY	<u>Harold Coleman & Wm. Boggs</u>	
DOA	BODY	ACTION
4-16-59	MAPC	Approve W part 4-3-59
<u>(NOTE: Boggs Add. is a companion case & requirement of MAPC)</u>		
3-15-62	MAPC	East 50' to "B", remainder I.C.
4-24-62	BCC	Approve as recom.
<u>file discarded 2-1-82</u>		
RESOLUTION NO.	<u>112</u>	PUBLISHED <u>5-3-62</u> OVER
T21-201		

31A

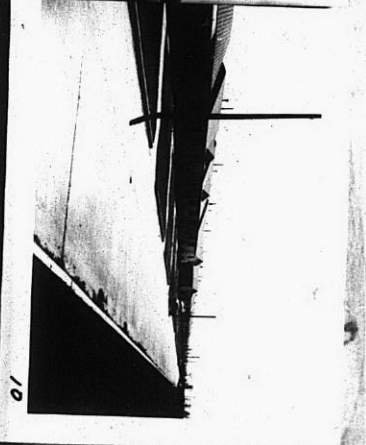
34X

122

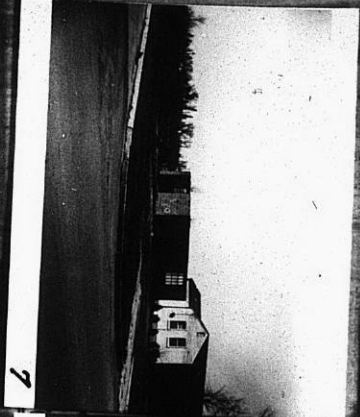
121



6



10



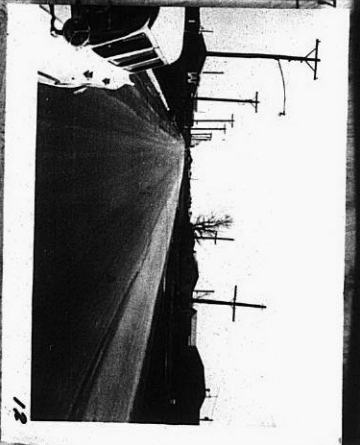
7



11



8



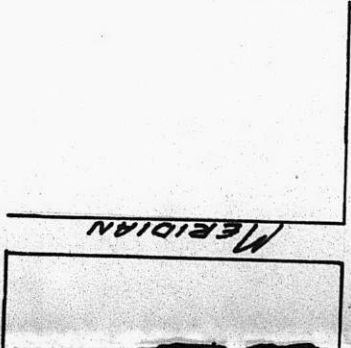
12



9



2-0155



MERIDIAN

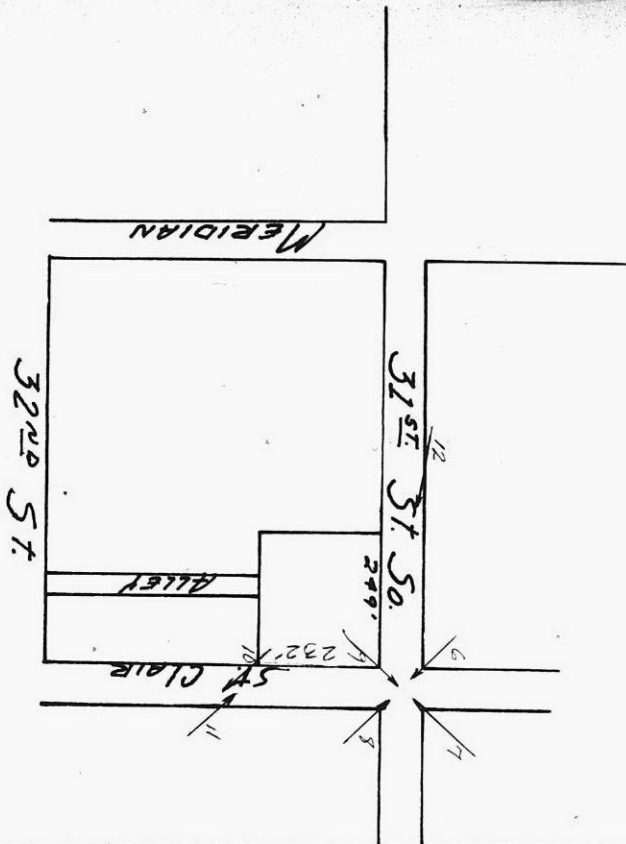
2-0155

7

XTE

XTE

00



Z-0155