

Z-0226

NO. Z-0226 ^{0.22} B TO LC

DESC E SIDE OF ST. PAUL BETWEEN 13TH & 15TH ST

BY A. I. WRIGHT & MAUDE CARPENTERS CHILDRENS HOME

DOA BODY ACTION NOTICES

3-17-60 MAPC Deny

3-29-60 BdCC Refer with same materials over to BdCC.

~~6-7-60~~ BdCC Approve.

Note See also V-0125 file discarded
3-1-82

RESOLUTION NO. 69 PUBLISHED 6-16-60

XTE

XTE

2-0226

2-0226



1.



2



3



4



5



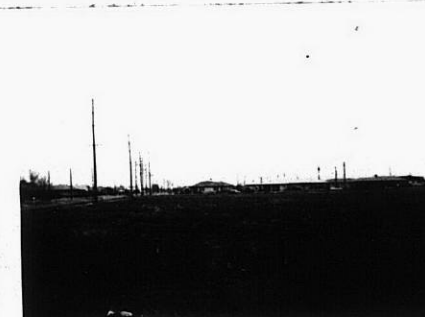
6



7



8



9

3E

3E



4



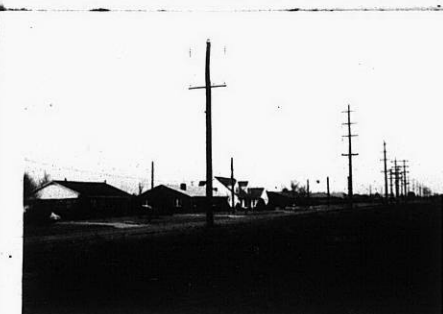
5



6



7



8



9



10

TAKEN Feb 2, 1960

Z-0226

XTE

XTE