

Z-0266

NO. Z-0266 "RB" to "LC"

Desc SE corner of Seneca and Savannah - 2514 S. Seneca  
South side of Savannah between Seneca and Osage

BY Owen J. Redmond, Agent

DOA	BODY	ACTION	NOTICES
<u>9-8-60</u>	<u>MAPC</u>	<u>Approve</u>	
<u>9-20-60</u>	<u>Bd CC</u>	<u>Refer</u>	
<u>9-27-60</u>	<u>Bd CC</u>	<u>Approve</u>	

file discarded 2-1-82

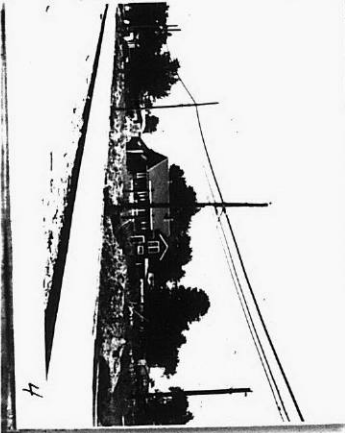
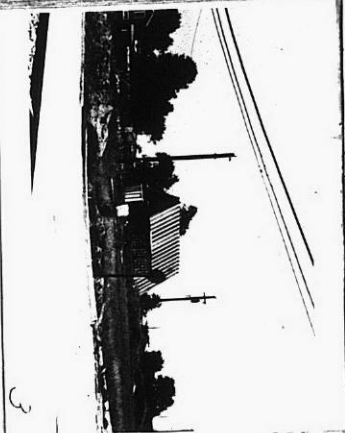
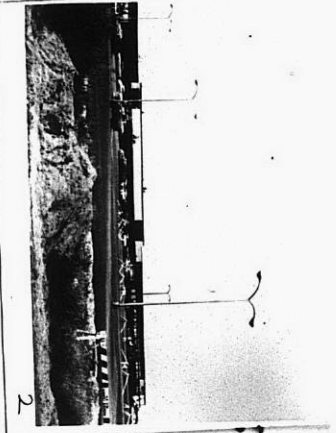
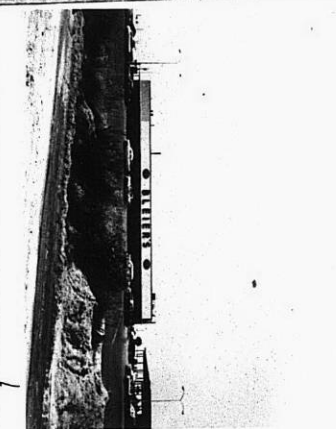
RESOLUTION NO. 79 PUBLISHED Oct 6, 1960

311

34X

34

34



2-0266  
TAKEN 9-1-60

2-0266