

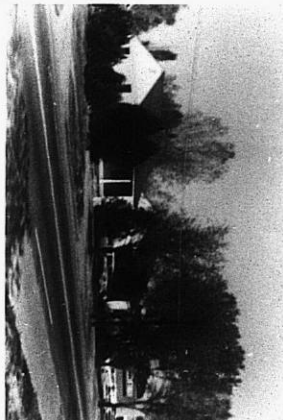
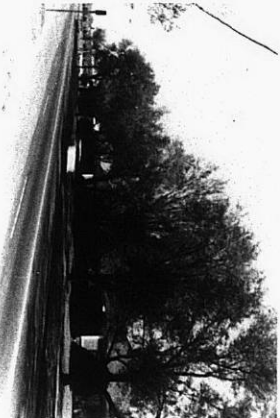
No.	Z-0453		A to BB
Desc.	SW corner of Hydraulic and Mt. Vernon		
By:	Randall D. & Billie Pierce		
D.O.A.	BODY	ACTION	
	MAPL	4-18-63	None
	S/O	4-25-63	Revised vacation <sup>already</sup> <del>filed</del>
	MAPL	5-2-63	Approved - to Doc when vacation <sup>already</sup> <del>filed</del>
	Doc	10-1-63	Approved
		File discarded 2-3-82	
RESOLUTION No.:	148	PUBLISHED:	10-12-63

SW CORNER OF HYDRAULIC AND  
MT. VERNON

Z-0453

47E

47E



2-0453

13E

13E