

NO. Z-1302

"AA" to "LC" (5047)

Desc. At the northeast corner of Maple and Ridge Road

Ronnie

By L.C. Investments, Inc. by Archie Conduff & Lane

DOA

BODY

ACTION

10-28-71 MAPC Approve subp. to platting

11-16-71 BCC Approve as recommended

file discarded 2-9-82

Ordinance
Resolution No. 32-474 Published 2-26-72 (T9-201)

Z-1302

319

347

1.

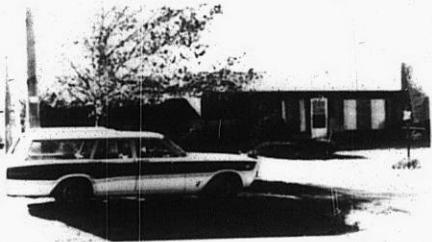


Z-1302

2.



3.



4.



5.



6.



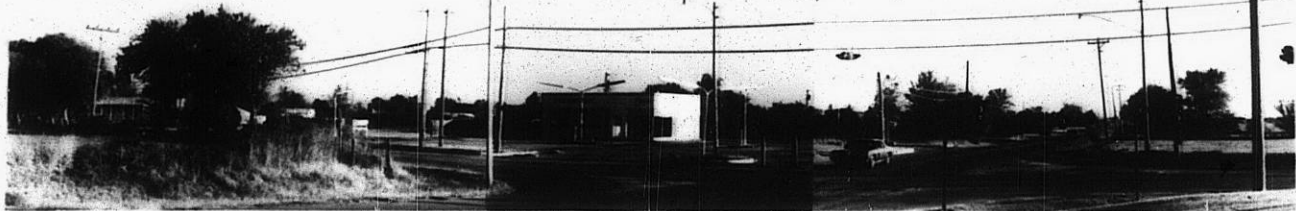
Z-1302

312

313



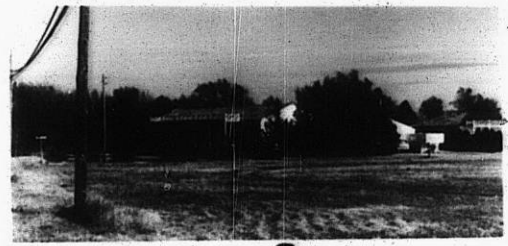
6.



Z-1302



7.



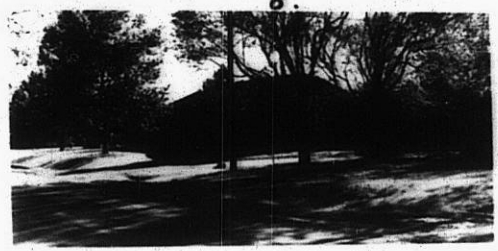
8.



9.



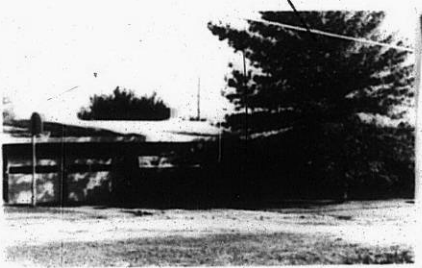
10.



11.



12.



13.



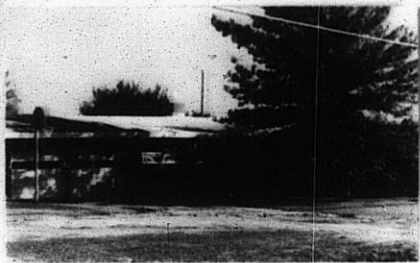
14.

Z-1302

310

X 310

10.

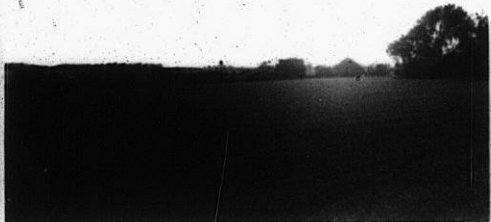


11.



12.

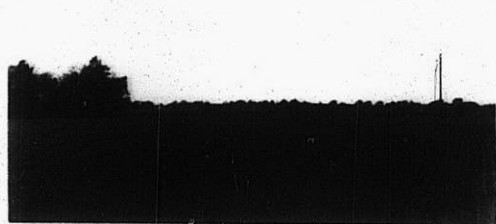
13.



14.



Z-1302



15

16

17.

311

34x