

NO. Z-1380

"AA" to "LC" (52.49)

Desc. On the north side of 13th in an area between  
West and High

By Catholic Diocese of Wichita by Malone, Dwire & Fraser

DOA	BODY	ACTION
4-27-72	MAPC	Approve subject to platting
5-16-72	BCC	Returns to Mapc for record
6-8-72	MAPC	Approve, subj to platting
6-27-72	BCC	Approve as recommended

file discarded 2-9-82  
Ordinance Resolution No. 32-518 Published 3.5.73 (T9-201)

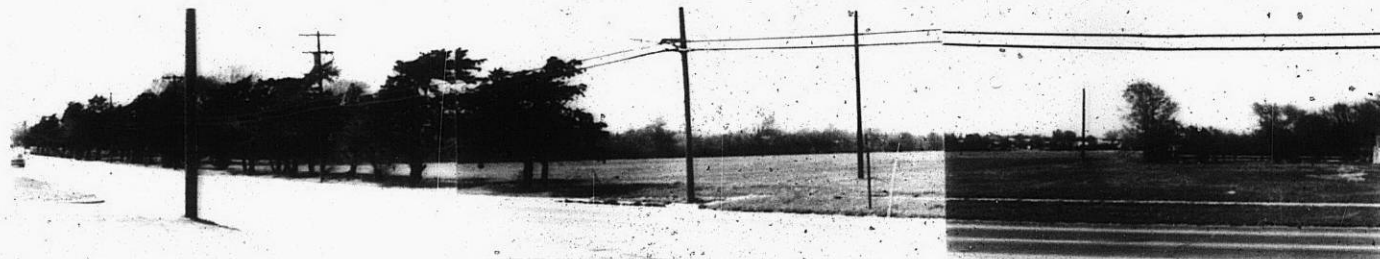
Z-1380

311

B4x

2-1380

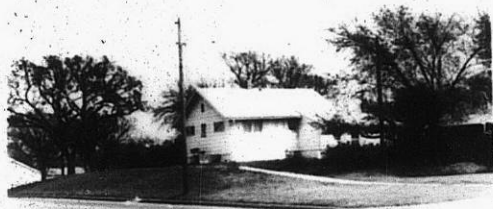
1.



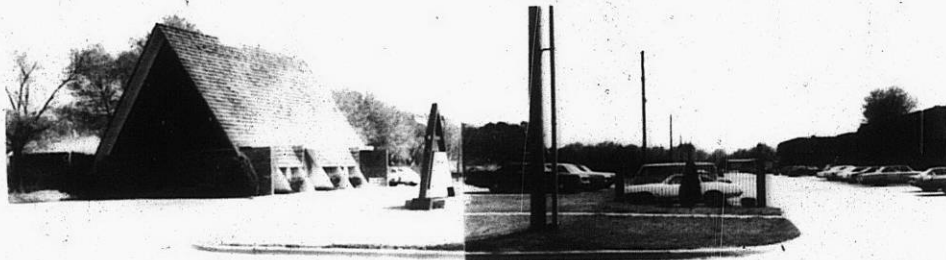
2.



3.



4.



5.



6.



151

X 3 E

6.



7.



2-1380

8.



319

34x