

NO. Z-1439

"AA" to "A"

American Landmark Corp. (494A)

Desc. On the East side of Holland between Nantucket  
and 13th.

By American Landmark Corp. by R. L. Smith

DOA                      BODY                      ACTION

10/12/72    MAPC    Approved subj to platting

10.31.72    BCC    Approved as recommended

file discarded 2-9-82

Ordinance  
Resolution No. 32-583 Published 3.28.73 (T9-201)

Z-1439

310

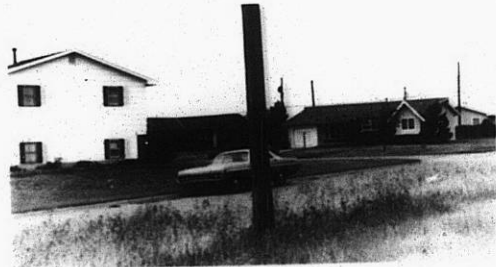
310

2-1439

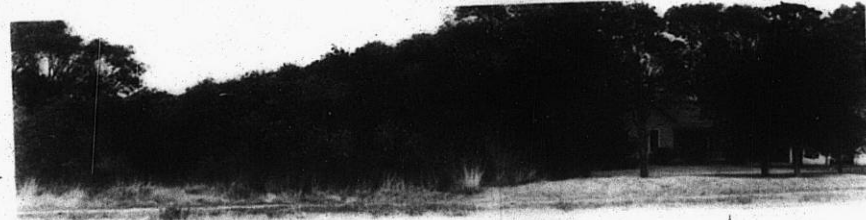
1.



2.



3.



4.



5.



6.

32

32