

2-1488

NO. 2-1488 "A" & "BB" to "LC" (546)

Desc. On the South side of Kellogg between Waverly Drive and Lightner Drive

By Mary Hudson by Everett C. Fettes

| DOA | BODY | ACTION |
|--------|------|-----------------------------|
| 2/8/73 | MAPC | approved subj to dedication |

~~2-27-73 BCC~~
 2-27-73 BCC. Returned to MAPC for consideration of lesser classification and differing to some extent to some

3-22-73 MAPC approved subj to dedication
 BCC

4-3-73 ~~MAPC~~ Defers 4 weeks later on to BCC. approved and recommended (T9-201)

Resolution No. 32-637 Published 4-13-73
 Ordinance file discarded 2-9-82

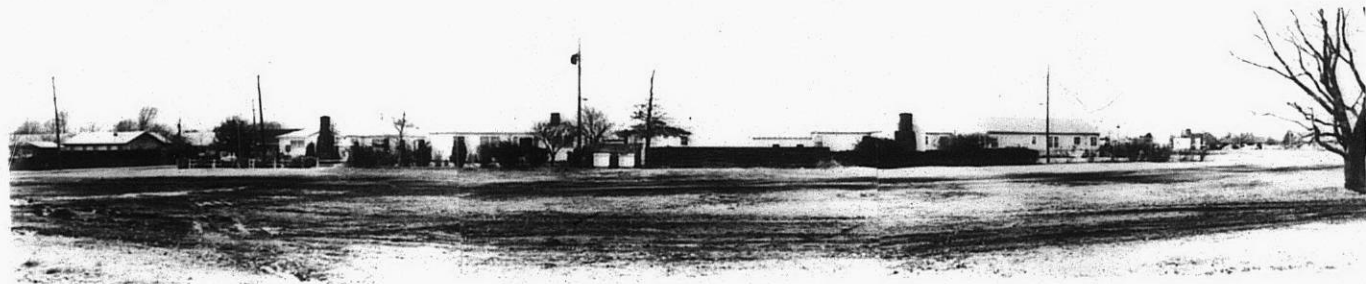
2-1488

STE

STE

Z-1488

1.



2.



3.



4.



5.



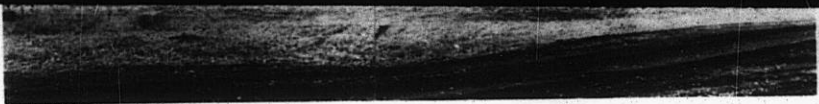
7.



Z-1488

310

34x



4.



5.



6.



7.

Z-1488



8.



9.

STE

STE