

NO. Z-1526 (5746) "~~A~~" ~~to~~ "BB" <sup>and "A" + "LC" to "BB"</sup>

Desc. Between Clifton and Bluffview Drive in an area  
North of Harry

By St. Joseph Hospital & Rehab. Center by Stephen M. Blaes

DOA	BODY	ACTION
5-24-73	MAPC	Approved subj to platting
6-12-73	WCC	Approved as recommended

file discarded 2-9-82

Ordinance  
Resolution No. 32-906 Published 10-31-73 (T9-201)

Z-1526

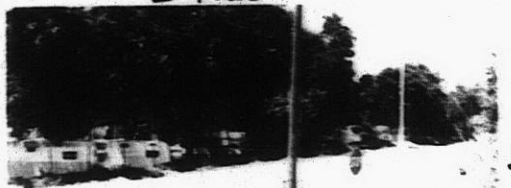
112  
112

1.

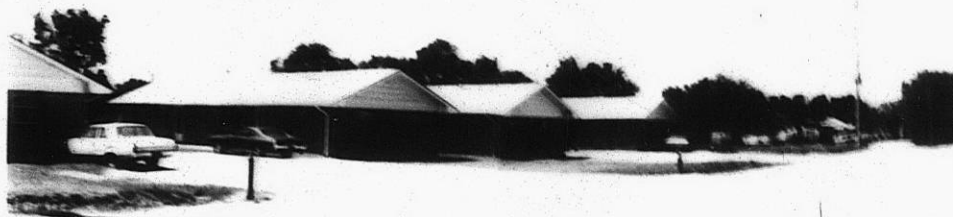


Z-1526

2.



3.



4.



Z-1526

5.

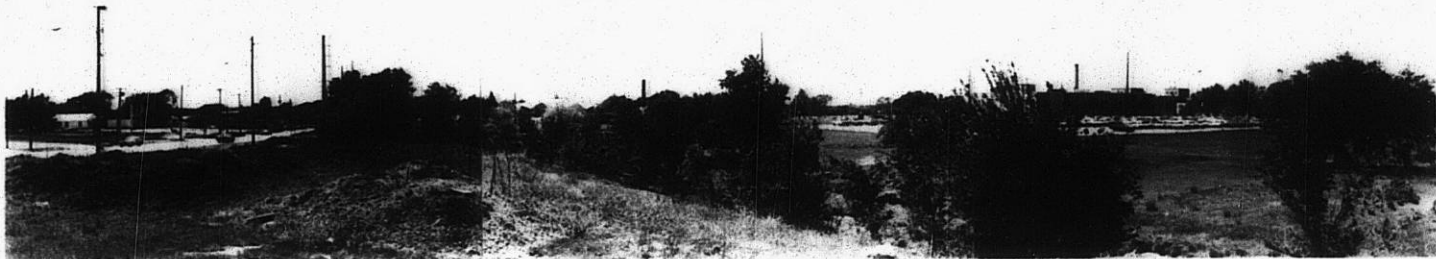


151

152

Z-1526

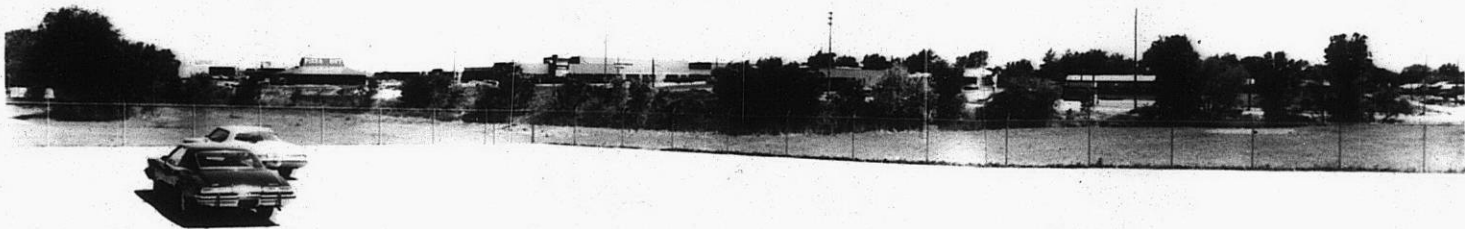
5.



6.



7.



8.



Z-1526

34

34

8.



Z-1526

9.



10.



37E

37E