

NO. Z-1705 5743 "AA" to "G"

Desc. East side of Clifton in an area north
of the Kansas Turnpike.

By Frederick G. Volz by Elmer G. Womack

DOA	BODY	ACTION
5-22-75	MAPC	<i>Approved subject to platting</i>
6-10-75	BCC	<i>Approved as rec.</i>

file discarded 2-9-82

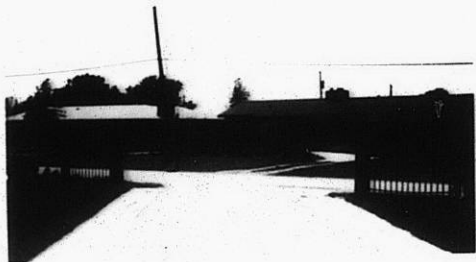
Ordinance No. 34-166 Published 1-30-76 (T9-201)

Z-1705

131
132

Z-1705

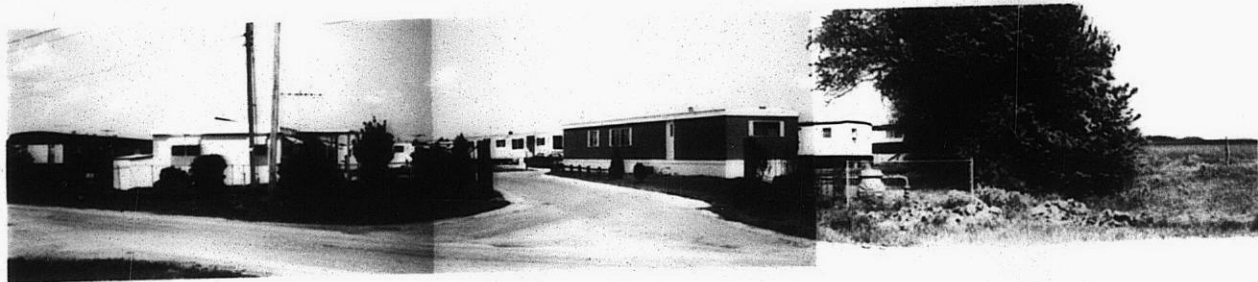
1.



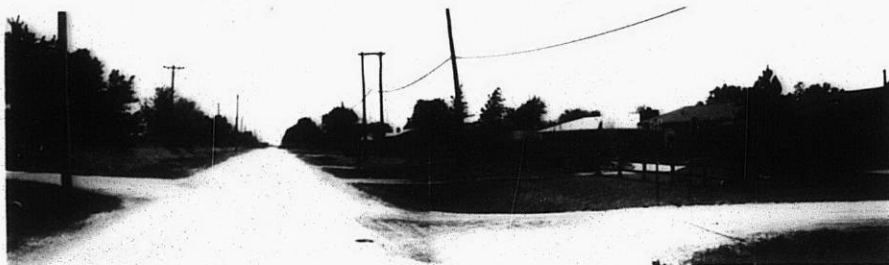
2.



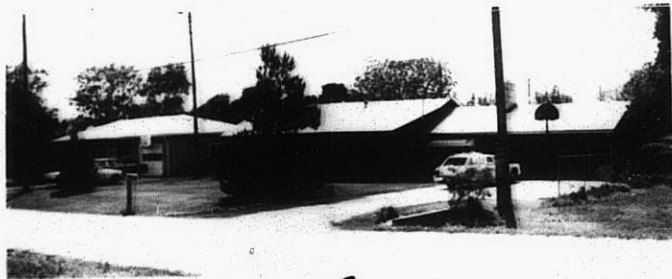
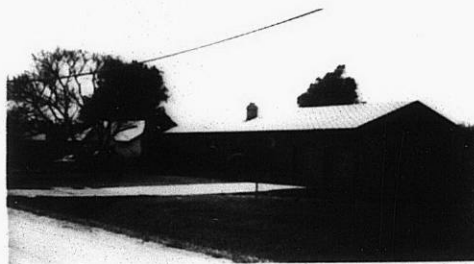
3.



4.



5.



6.

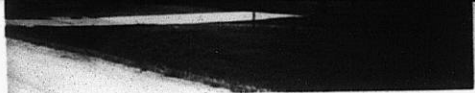
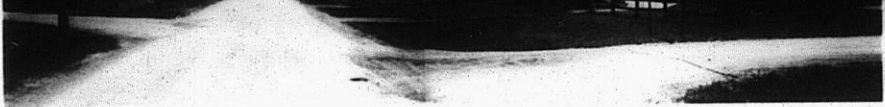


7.

Z-1705

310

34x

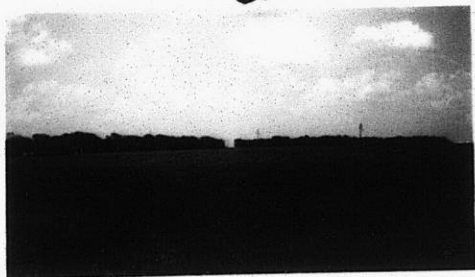


6.

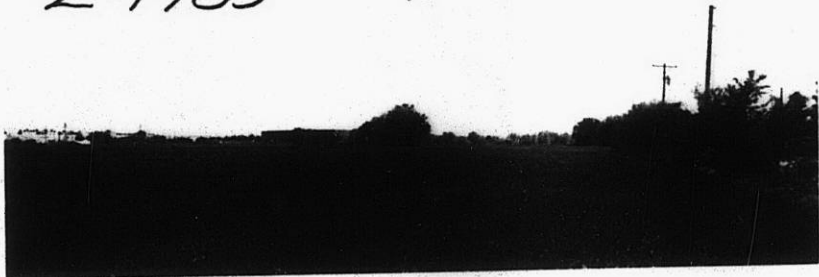


Z-1705

7.



8.



9.



10.



11.



12.



13.

7-1705

157

X 157

12.



13.



Z-1705

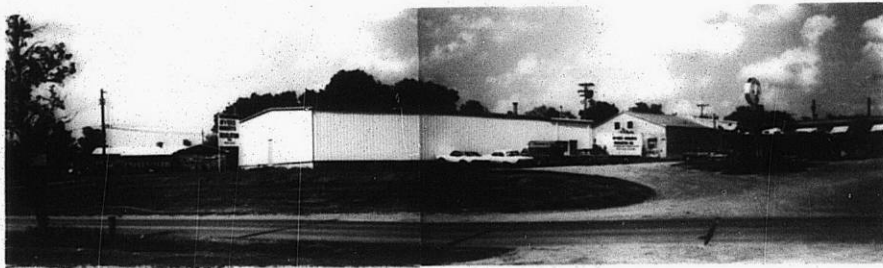
14.



15.



16.



310

34X