

NO. 2-1706 5248 "AA" to "A"

Desc. West side of Meridian in an area south of
11th St.

By Charles Shebe by Grant Gaudreau

DOA	BODY	ACTION
5-22-75	MAPC	App subject to platting
6-10-75	BCC	Approved as rec

file discarded 2-9-82
closed

Ordinance No. 34-455 Published 6-11-76 (T9-201)

2-1706

34

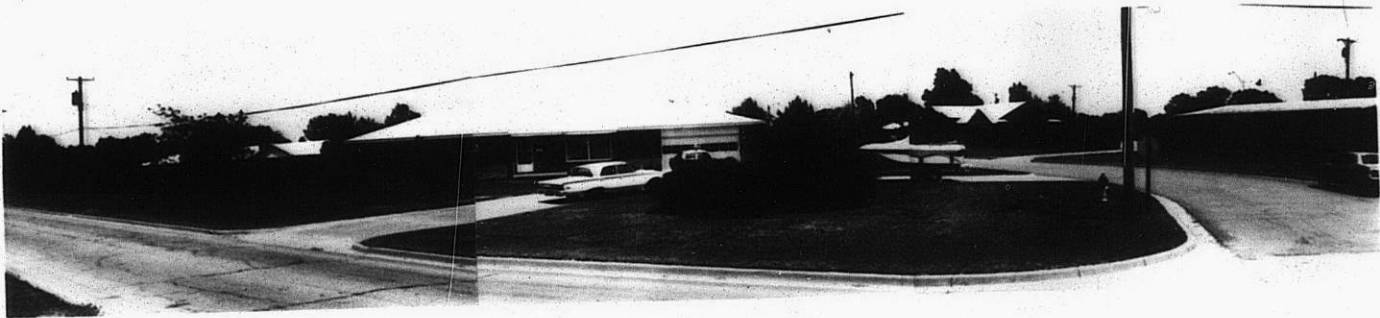
34

Z-1706

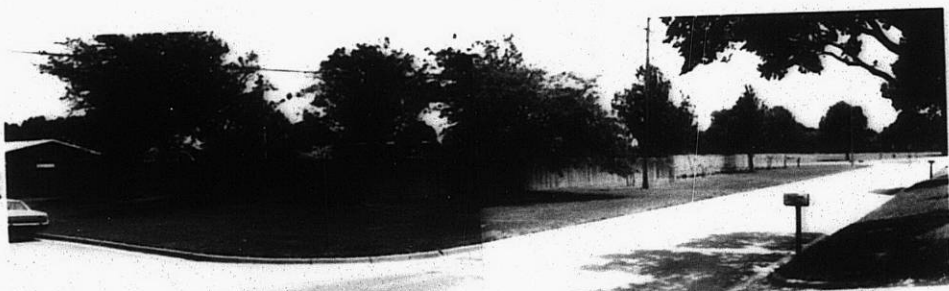
1.



2.



3.



4.



Z-1706

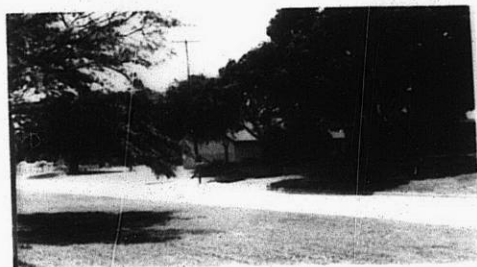
34X



3.



4.



2-1706



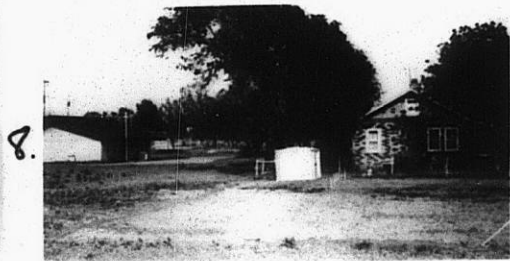
5.



6.



7.



8.

310

34x