

NO. 7-1714 "B" to "LC"

Desc. Southeast corner of Amidon and 29th St. No.

By Calvin Hermann by Roger Sherwood

DOA	BODY	ACTION
7-10-75	MAPC	<i>denied</i>
7-29-75	BCC	<i>deferred at applicant request</i>
8-19-75	BCC	<i>denied</i>
		<i>closed</i>

*file discarded 2-9-82*

Ordinance No. \_\_\_\_\_ Published \_\_\_\_\_ (T9-201)

2-1714

310

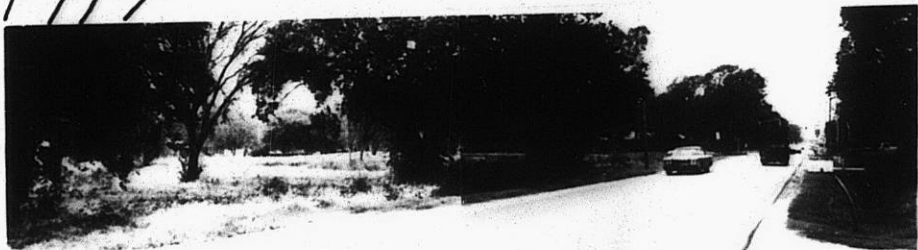
310

2-1714

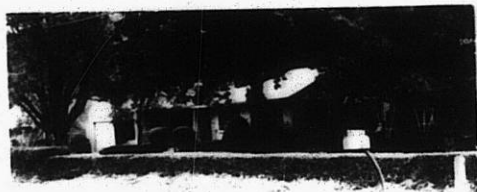
1.



2.



3.



4.



5.



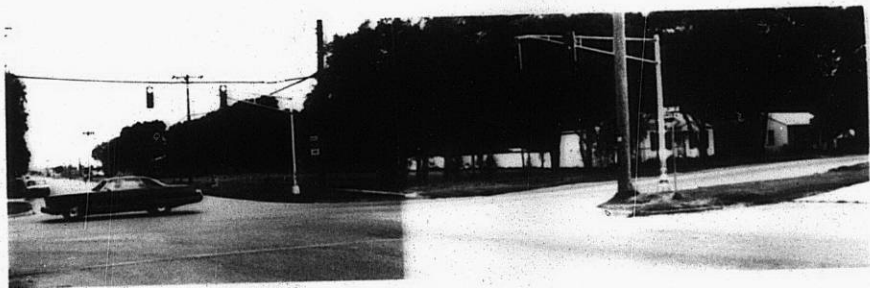
6.



7.



8.



7-1714

312

X 312

5.



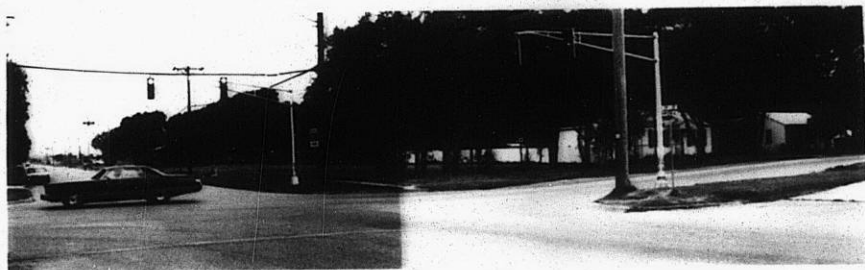
6.



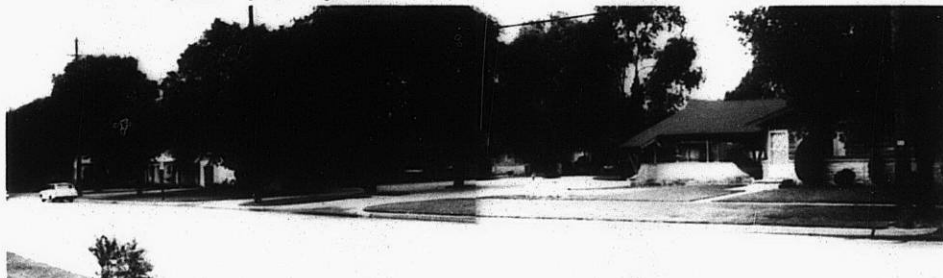
7.



8.



Z-1714



9.

11



12



310

XBE