

NO. Z-1723 5244 "LC" to "C"

Desc. Between Pawnee and Atlanta and between
Meridian and Richmond

By Nance Rentals, Inc. et.al. by Ron Wilkinson

DOA	BODY	ACTION
8-14-75	MAPC	<i>approved sub. to re-platting</i>
9-2-75	<i>Pcc</i>	<i>approved as recommended</i>

file discarded 2-9-82
closed

Ordinance No. 34-711 Published 11-18-76 (T9-201)

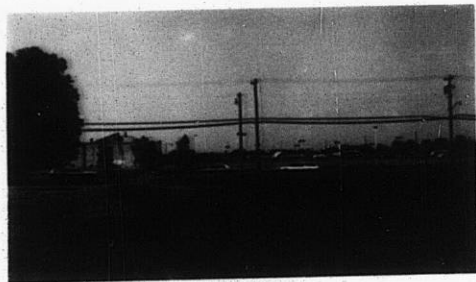
Z-1723

319

342

Z-1723

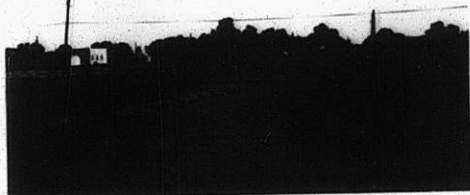
1.



2.



3. Z-1723

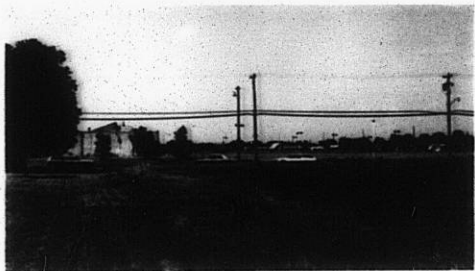


4.



513

34x



2.



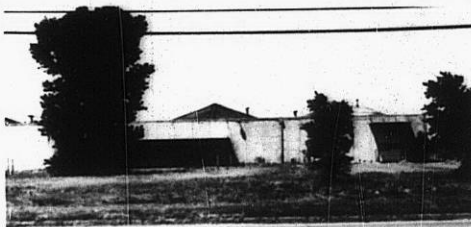
3. Z-1723



4.



5.

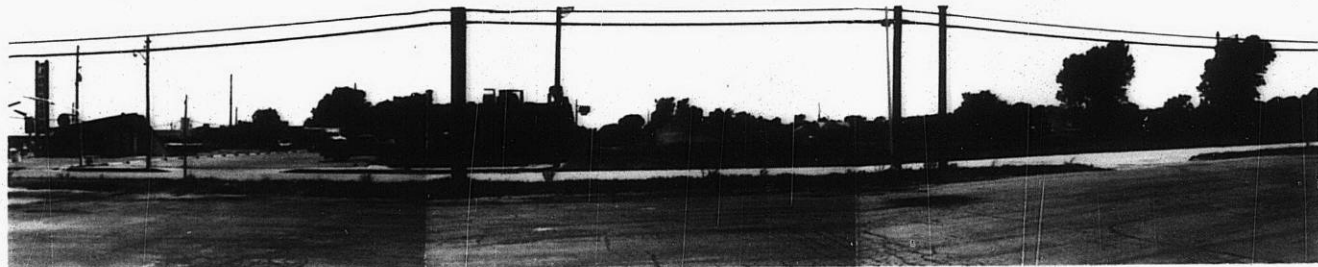


6.



7.

8.



173

173