

NO. Z-1733 4947 "A" & "AA" to "A", "RB" & "BB"

Desc. Meadowview Estates addition, at the southwest
corner of Newell and Ridge Road

By William T. Weir, Jr. by Oblinger-Smith Corp.

DOA

BODY

ACTION

9-11-75

MAPC

Approve subject to replatting

9-30-75 BCC

approved as recommended

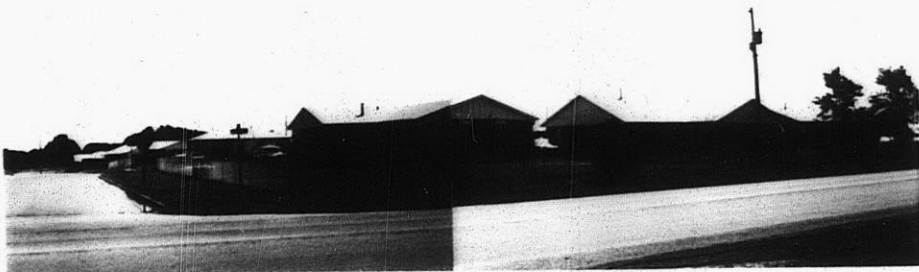
file discarded 2-9-82

Ordinance No. 34-259 Published 3-19-76 (T9-201)

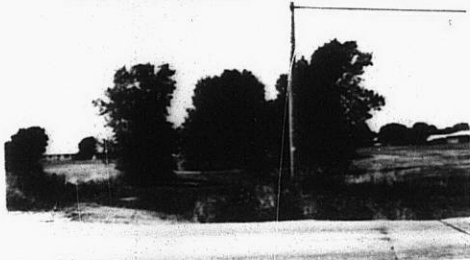
Z-1733

173

173



Z-1733

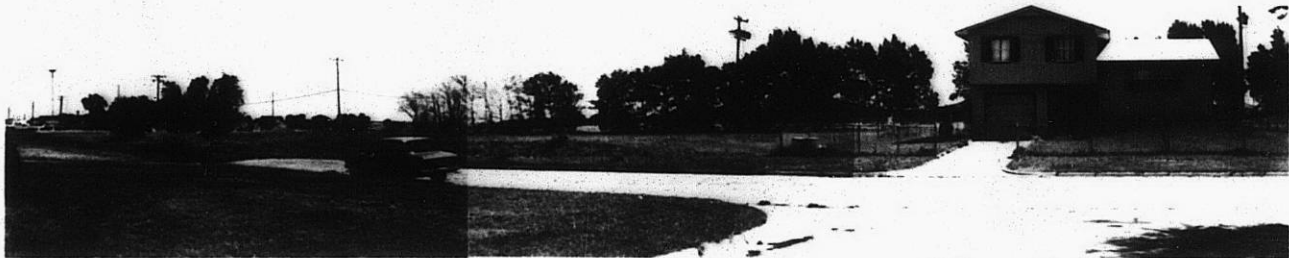


Z-1733

313

34X

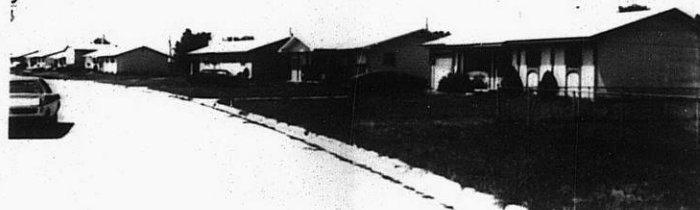
7.



Z-1733

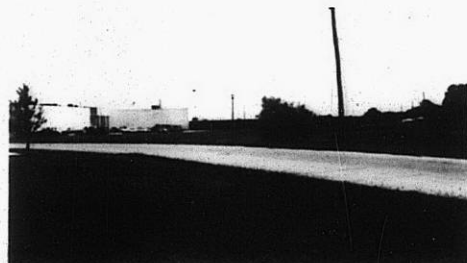
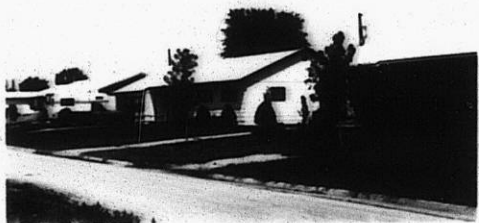


8.



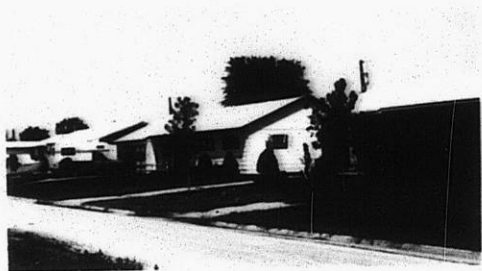
9.

10.



113

114

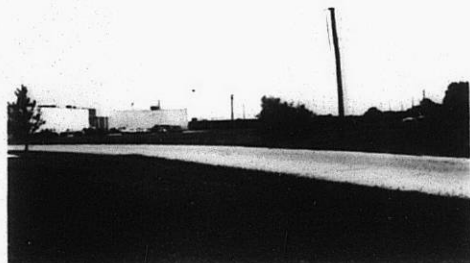


11.



12.

Z-1733

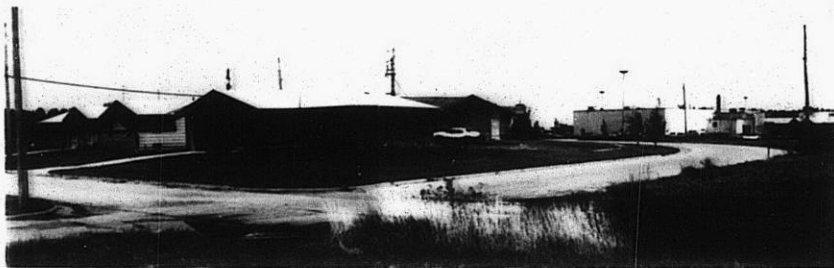


13.

14.



15.



16.



17

18