

NO. Z-1737

"AA" to "G"

Desc. generally located on the south side of 13th St.  
in an area west of Smith St.

By Ellen Sites et al

DOA BODY ACTION

10-9-75 MAPC *Deferred*

11-13-75 MAPC *Deferred*

12-1-75 MAPC *Strike from agenda - withdrawn  
by applicant*

*file discarded 2-9-82  
closed*

Ordinance No. \_\_\_\_\_ Published \_\_\_\_\_ (T9-201)

Z-1737

319

319

2-1737

1.



2.



3.



4.



5.



310

34X

A.



5.



6.

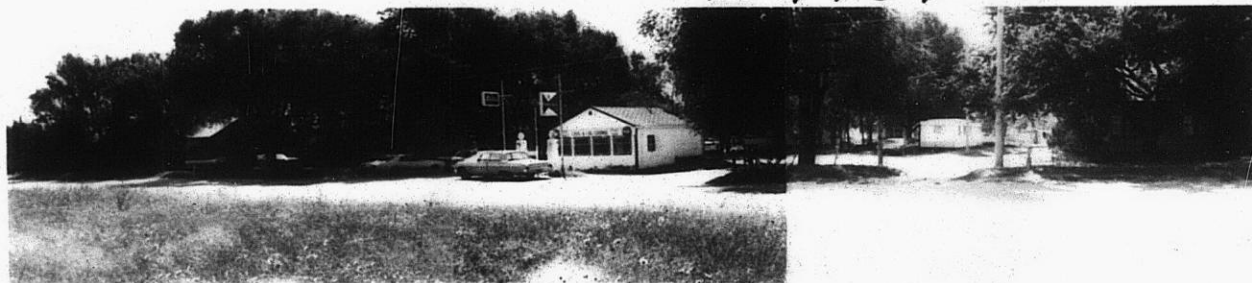


7.



Z-1737

B.



310

34x