

NO. 2-1739 5349 "B" to "IC"  
Marina Lake Drive, Inc. - Subd. Ord. 24-234  
Desc. on the south side of 21st St. between Sweetbriar  
and Marigold as extended from the north.

By Agent-Vincent L. Bogart, Chartered

DOA	BODY	ACTION
10-9-75	MAPC	approved
10-28-75	BCC	Returned to maps for previous layout.
11-13-75	Maps	approved
12-9-75	BCC	Approval sub to amended CIP
		file discarded 2-9-82
		Closed

Ordinance No. 34-149 Published 8/19/76 (T9-201)

2-1739

319

34X

Z-1739

1.



2.

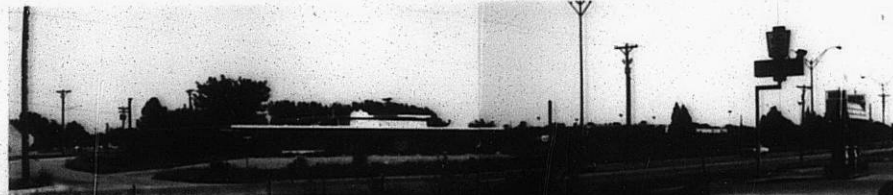


Z-1739

3.



4.



33

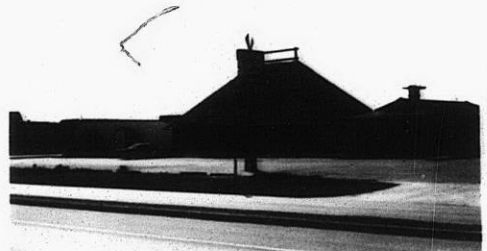
34X

2.

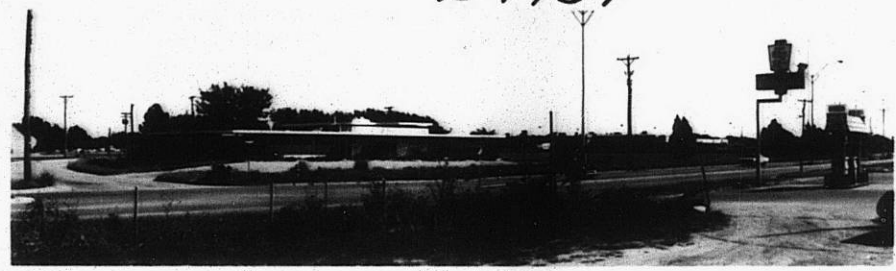


Z-1739

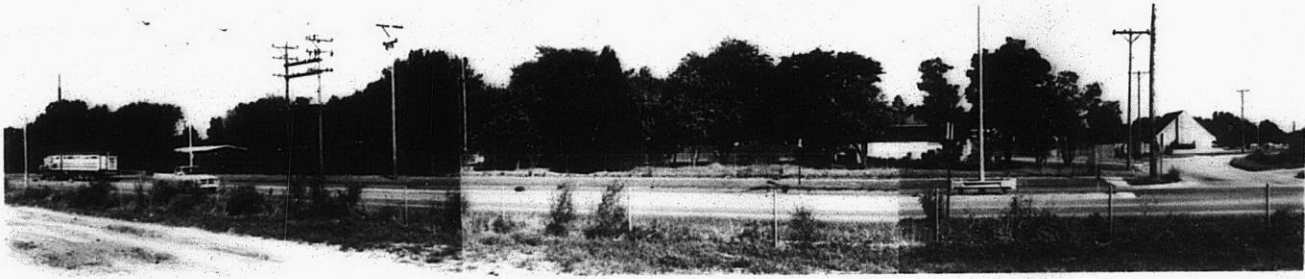
3



4.



5.



3E

XE