

NO. Z-1751 *Charles Jackson add* "AA" to "RB" (5247)

Desc. Between Illinois and McComas in an area south
of Douglas

By Charles L. and Ina R. Jackson

DOA	BODY	ACTION
11-13-75	MAPC	<i>app. in part - put to re-planting</i>
<i>12-9-75</i>	<i>Sec</i>	<i>approved as recommended</i>

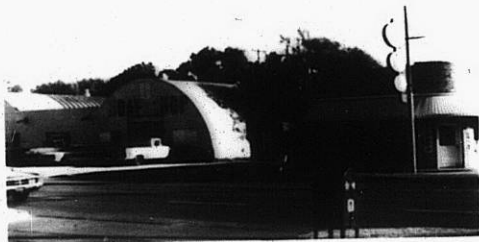
file discarded 2-9-82
Closed

Ordinance No. 34-872 Published 4-11-77 (T9-201).

2-1751

319
XBE

Z-1751



1.



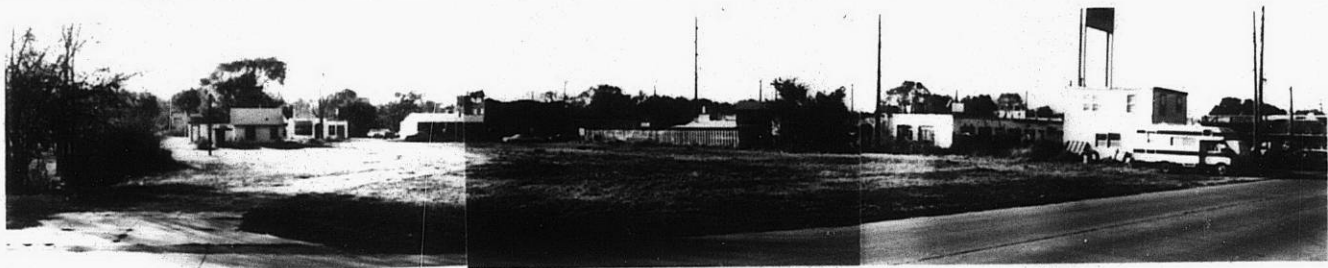
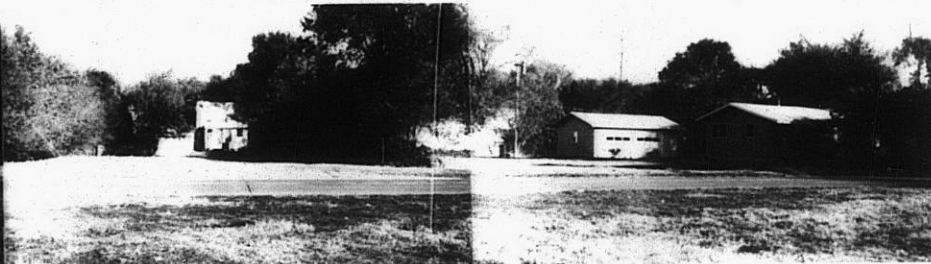
2.



3.



4.



5.



6.



7.

Z-1751

313

308

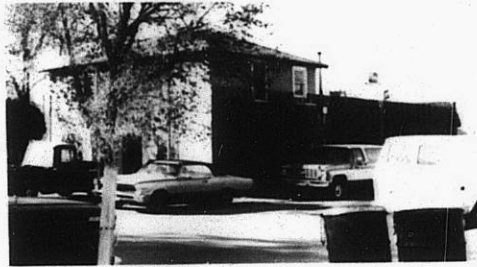
5.



6.



7.

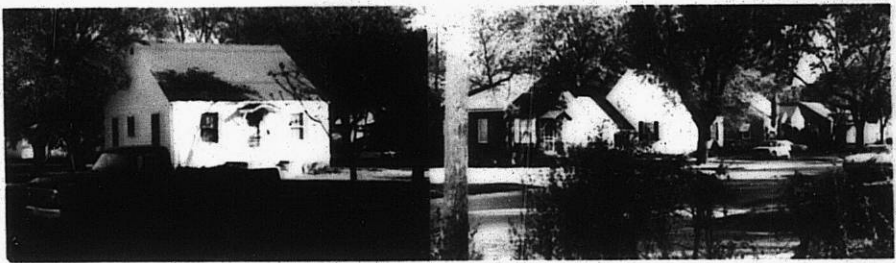


2-1751

8.



Paul and
Mary Ann
R.B.
12-19-6



XBE

XBE

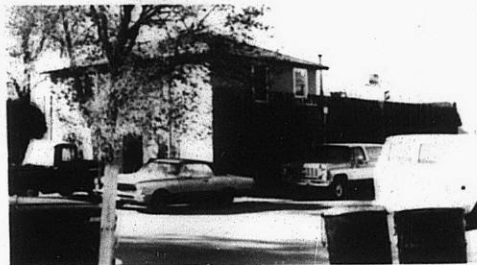
5.



6.

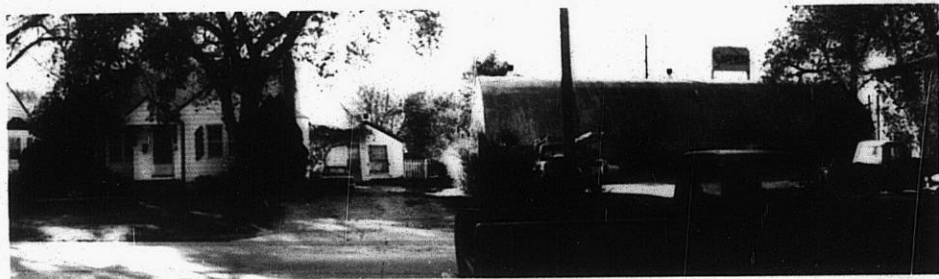


7.



Z-1751

8.



Only west
approach for R.B.
1296

9.



XBE

XBE