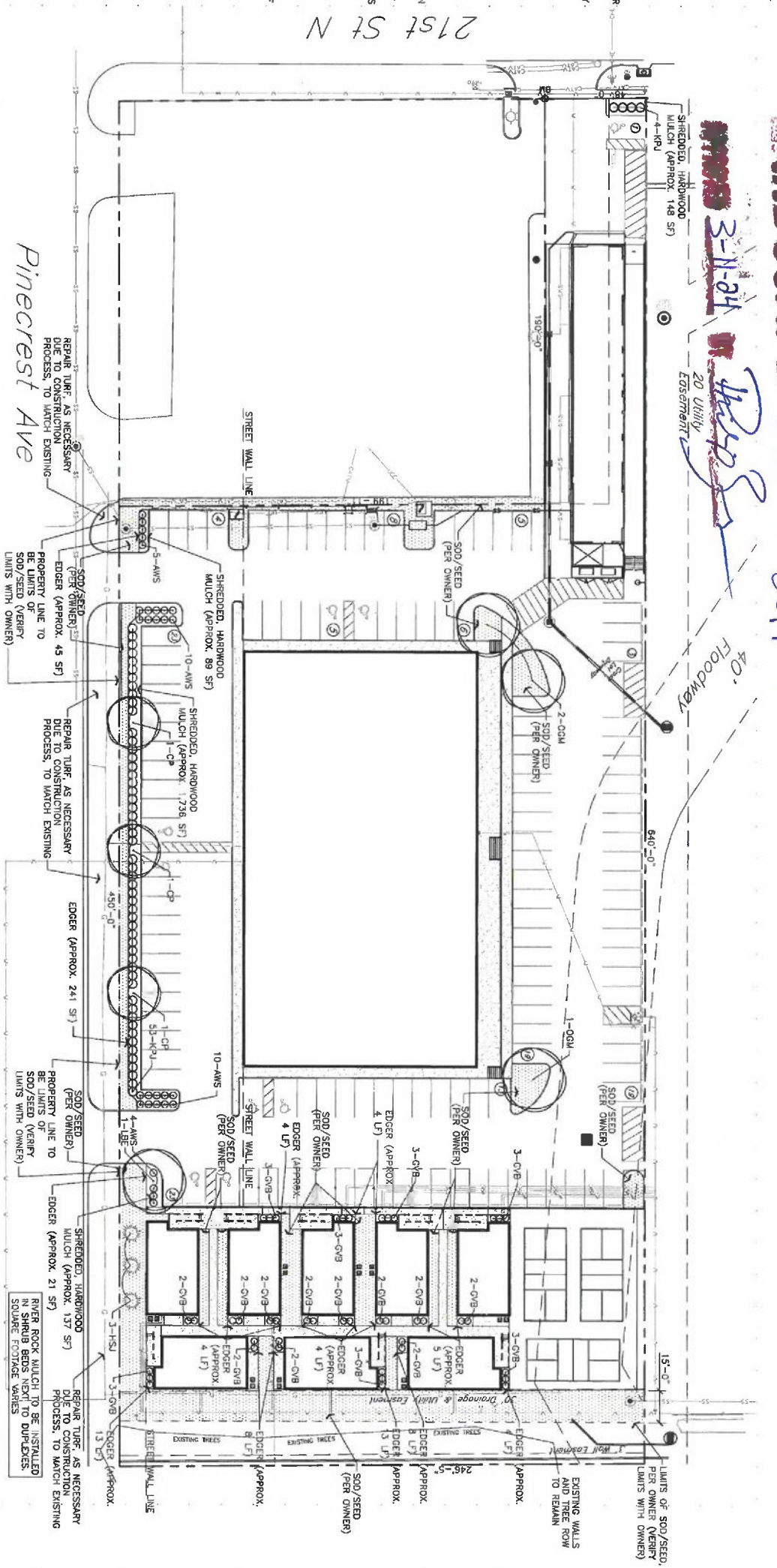


GENERAL PLANTING NOTES

1. PRIOR TO BEGINNING ANY WORK ON THE SITE, THE CONTRACTOR SHALL CONTACT THE OFFICE OF THE OWNER AND THE ARCHITECT/LANDSCAPE ARCHITECT FOR SPECIFIC INSTRUCTIONS RELEVANT TO THE SCHEDULING OF WORK.
2. LANDSCAPE CONTRACTOR SHALL PROVIDE ALL LABOR, MATERIALS AND SERVICE NECESSARY TO FURNISH AND INSTALL PLANTINGS AS SPECIFIED HEREIN AND AS SHOWN ON THESE PLANS.
3. NO MATERIAL SUBSTITUTIONS SHALL BE MADE WITHOUT THE OWNER'S APPROVAL. ALTERNATE MATERIALS OF SIMILAR SIZE AND CHARACTER MAY BE CONSIDERED IF SPECIFIED PLANT MATERIALS CANNOT BE OBTAINED. LANDSCAPE ARCHITECT RESERVES THE RIGHT TO REVERSE PLANT LIST AS DEEMED NECESSARY.
4. ALL PLANT LOCATIONS ARE APPROXIMATE. ADJUST AS NECESSARY TO AVOID CONFLICTS.
5. QUANTITIES OF MATERIALS SHOWN ON THE PLANTING PLAN TAKE PRECEDENCE OVER QUANTITIES SHOWN ON THE PLANT MATERIAL SCHEDULE. LANDSCAPE CONTRACTOR SHALL BE RESPONSIBLE FOR VERIFYING ALL QUANTITIES ON THE PLANTING PLAN.
6. CONTRACTOR SHALL LOCATE ALL UTILITIES BEFORE WORK. LOCATE EXACT UTILITY LOCATIONS BY CONTACTING THE LOCAL UTILITY LOCATOR SERVICE. THE CONTRACTOR WILL BE RESPONSIBLE FOR THE REPAIR OF ANY DAMAGE HE MAY CAUSE TO UTILITIES.
7. GENERAL CONTRACTOR SHALL PROVIDE 4" OF TOPSOIL AT ALL SOD AND PLANTING AREAS. GRADE SHALL BE ADJUSTED FOR 500 THICKNESS. ALL FINISH GRADING SHALL BE PERFORMED BY THE LANDSCAPE CONTRACTOR.
8. SOD/SEED TYPE SHALL BE LOCALLY AVAILABLE TALL FESCUE BLEND OR OTHER TURFGRASS RECOMMENDED BY THE AREA, PER OWNER. SOW SEED AT RECOMMENDED RATE FOR SOIL TYPES AND EXISTING COVERAGE.
9. BACKFILL FOR PLANT EXCAVATIONS TO BE CLEAN NATURAL SOIL EXCAVATED FROM PLANTING PITS MIXED WITH COMPOST AND WELL-ROTTED MANURE AT A RATIO OF THREE (3) PARTS SOIL TO ONE (1) PART COMPOST AND WELL-ROTTED MANURE.
10. FERTILIZE ALL PLANTS WITH 6-10-4 COMMERCIAL FERTILIZER AS DIRECTED BY INSTRUCTIONS ON FERTILIZER.
11. AFTER PLANTING IS COMPLETED, REPAIR RAINURES TO ALL PLANTS AS REQUIRED. LIMIT AMOUNT OF FERTILIZER TO BE APPLIED TO PLANTS TO BE PLANTED TO PREVENT OVER-FERTILIZATION. FERTILIZER IN SUCH A MANNER AS NOT TO CHANGE NATURAL HABIT OR SHAPE OF PLANT. MAKE CUTS FLUSH, LEAVING NO STUBS.
12. INSTALL SMALL RIVER ROCK IN PLANT BEDS AROUND BUILDING, AS NOTED ON PLAN WITH A 2" DEPTH. FINISH UNDERLAYER SHALL BE PROVIDED PRIOR TO INSTALLATION. SIZE OF SMALL RIVER ROCK TO BE 2" TO 4".
13. USE SHREDED CEDAR WOOD MULCH IN ALL OTHER PLANTING BEDS. LANDSCAPE CONTRACTOR TO PROVIDE SAMPLE TO LANDSCAPE ARCHITECT OR OWNER'S REPRESENTATIVE FOR APPROVAL.
14. PLANTING BEDS RECEIVING RIVER ROCK OR SHREDED CEDAR WOOD MULCH ARE TO BE FREE OF WEEDS AND GRASS. TREAT BEDS WITH A PRE-EMERGENT HERBICIDE PRIOR TO MULCH PLACEMENT. APPLY IN ACCORDANCE WITH STANDARD TRADE PRACTICE.
15. PLACE 4" MULCH IN AROUND ALL TREES PLANTED IN TURF AREAS. AREAS RECEIVING MULCH ARE TO BE FREE OF WEEDS AND GRASS.
16. THE CONTRACTOR SHALL PROVIDE ALL WATER, WATERING DEVICES AND LABOR NEEDED TO IRRIGATE PLANT MATERIALS UNTIL ACCEPTANCE OF THE PROJECT'S PLANT MATERIALS. THE CONTRACTOR SHALL SUPPLY ENOUGH WATER TO MAINTAIN THE PLANTS' HEALTHY CONDITION.
17. RE-ESTABLISH TURF IN AREAS DISTURBED BY GRADING OR UTILITY TRENCHING IN THE R.O.W.
18. REESTABLISH TURF IN ALL AREAS DISTURBED BY THE CONSTRUCTION PROCESS AND WITHIN THE LIMITS OF DISTURBANCE BY SEED, SOD OR PLANNED PLANTING AREAS, AS NOTED ON PLAN.
19. REPORT ANY DISCREPANCIES IN THE PLANTING PLAN TO THE OWNER'S REPRESENTATIVE PRIOR TO STARTING CONSTRUCTION.

LANDSCAPE PLAN

WPP DR-8



LANDSCAPE CODE CALCULATIONS

LANDSCAPED STREET YARD REQUIRED
 N: 21st, 98 LF x 20 = 380 SF Landscaped Street Yard Required
 150 Landscaped Street Yard Provided

960 / 500 = 1.9 or say 2 Shade Trees Required
 150 Landscaped Street Yard Provided
 Pinecrest Ave 450 LF x 10 = 4,500 SF Landscaped Street Yard Required
 5,028 SF Landscaped Street Yard Provided

4,500 / 500 = 9 Shade Trees Required (see linked to be staggered)
 3 Shade Trees, 3 Emergent Trees + 20 Shrubs = 9 Trees Provided

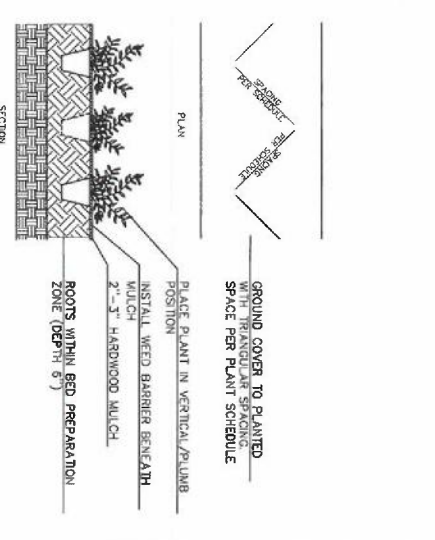
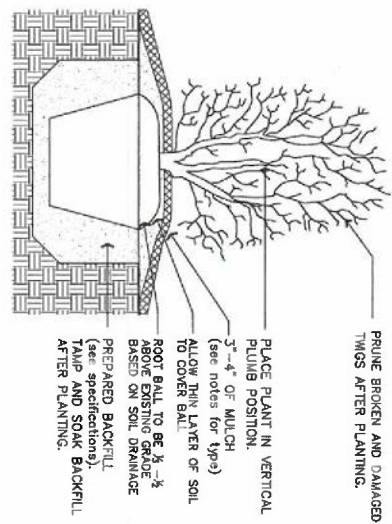
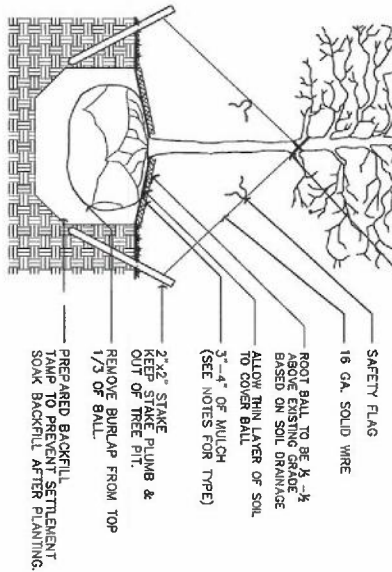
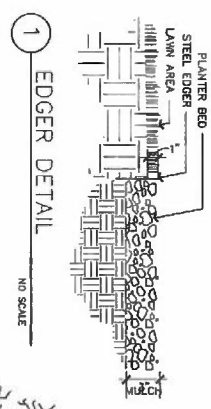
BUFFERES REQUIRED:
 No Bufferes Required

PARKING LOT SCREENING & LANDSCAPING
 Required Parking Lot Trees: 128 Parking Stalls / 20 = 6.4 or say 7 Trees Required
 (up to 2/3 of required street yard trees may be used)
 3 Parking Lot Trees + 4 Street Yard Trees = 7 Trees Provided

Parking stalls are screened with shrubs

PLANT MATERIAL SCHEDULE

TAG QTY.	COMMON NAME	BOTANICAL NAME	SIZE/REMARKS
CP 3	SHADE TREES		
1	Chinese Pistache	<i>Pistacia chinensis</i>	2" Cal.
1	Lacandon Elm	<i>Ulmus parvifolia</i>	2" Cal.
3	October Glory Maple	<i>Acer rubrum</i>	2" Cal.
3	EMERGENT TREES		
3	Hillier Juniper	<i>Juniperus virginiana 'Dappledford'</i>	2" Cal.
43	EMERGENT SHRUBS		
3	Green Velvet Boxwood	<i>Buxus 'Green Velvet'</i>	3 Gal.
37	Kelley Prairie Juniper	<i>Juniperus priferae 'Kelley's Compact'</i>	3 Gal.
29	DECIDUOUS SHRUBS		
3	Anthony Waterer Spirea	<i>Spiraea x burndodii 'Anthony Waterer'</i>	3 Gal.



LOT 5 UNIVERSITY GARDENS
 2ND ADDITION
 5110 E. 21st St. N
 Wichita, KS 67208

TERI ANREAS FARHA
 WICHITA, KS
 teri@anreas.com

DATE
 JANUARY 8, 2024
 FEBRUARY 5, 2024

PLANTING PLAN
 LS1.0