



717 STREET
WHEELING, KY (R1, R2)
PER 4.1-6-21

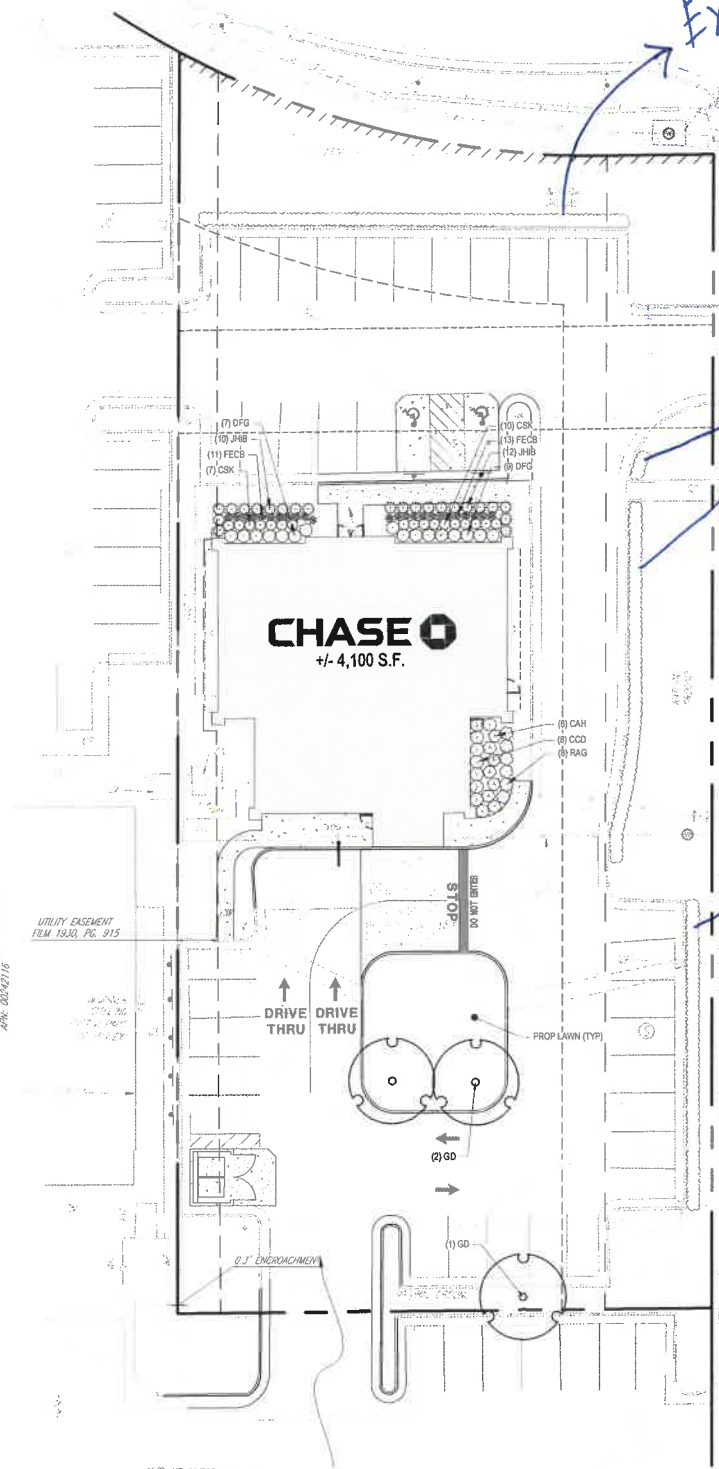
PLANT SCHEDULE

CODE	QTY	BOTANICAL NAME	COMMON NAME	SIZE	CONTAINER
CANOPY TREES					
GD	3	GYMNOCADUS DIOICA	KENTUCKY COFFEE TREE	2.5" CAL	B&B
SHRUBS					
CAH	6	CLETHRA ALNIFOLIA 'HUMMINGBIRD'	HUMMINGBIRD SUMMERSWEET (DWARF)	24-30"	CONTAINER
CCD	8	CARYOPTERIS X CLANDONENSIS 'DARK KNIGHT'	BLUE MIST SHRUB	18-24"	CONTAINER
CSK	17	CORNUS SERICEA 'VELSEY'	VELSEY DOGWOOD	15-18"	CONTAINER
DPS	16	FOTHERGILLA GARDENII	DWARF FOTHERGILLA	18-24"	CONTAINER
JHB	22	JUNIPERUS HORIZONTALIS 'MONIER'	ICEE BLUE JUNIPER	15-18" SPRD	CONTAINER
RAG	8	RHUS AROMATICA 'GRO-LOW'	GRO-LOW FRAGRANT SUMAC	15-18"	CONTAINER
GRASSES					
FECB	24	FESTUCA CINEREA 'ELIJAH'S BLUE'	ELIJAH'S BLUE PESCUE	1 GAL	CONTAINER

GENERAL LANDSCAPE NOTES

- THIS PLAN IS TO BE UTILIZED FOR LANDSCAPE PURPOSES ONLY.
- ALL DISTURBED UNPAVED AREAS, EXCLUDING PLANTING BEDS, ARE TO BE INSTALLED AS LAWN IN ACCORDANCE WITH LANDSCAPE SPECIFICATION #2.C, UNLESS OTHERWISE STATED ON THIS PLAN.
- SHRUBS PLANTED ALONG HEAD-IN PARKING STALLS SHALL BE INSTALLED TO ALLOW A CLEARANCE OF TWO FEET FROM FACE OF CURB TO ALLOW FOR BUMPER OVERHANG.
- IF IRRIGATION IS REQUIRED BY THE OWNER OR APPROVING MUNICIPALITY, THE CONTRACTOR SHALL PROVIDE AN IRRIGATION SYSTEM MEETING THE SPECIFICATIONS OF THE CHOSEN PRODUCTS MANUFACTURER. THE IRRIGATION DESIGN SHALL ACCOMMODATE LAWN AND BED AREAS EACH UNDER SEPARATE ZONES TO MAXIMIZE WATER EFFICIENCY. THE CONTRACTOR SHALL BE RESPONSIBLE FOR SECURING ANY PERMITS REQUIRED FOR THE INSTALLATION OF AN IRRIGATION SYSTEM.
- PLANT MATERIAL SUBSTITUTIONS MUST BE FORMALLY SUBMITTED TO BOHLER AND THE MUNICIPAL ENGINEER AND LANDSCAPE CONSULTANTS FOR REVIEW AND APPROVAL PRIOR TO INSTALLATION. ANY PLANT MATERIAL THAT ARE TO BE INSTALLED WITHIN STORMWATER BMP FEATURES MUST BE NATIVE SPECIES.
- WITHOUT EXCEPTION, WEED BARRIER FABRIC SHALL NOT BE INSTALLED WITHIN ANY BMP FACILITY. BMP FACILITIES INCLUDE RAMBARDENS, INFILTRATION TRENCHES, VEGETATIVE SWALES AND STORMWATER BASINS.

Existing Parking lot screening shall be maintained and gaps filled in per Landscape Code



LANDSCAPE PLAN

APPROVED 2/27/25 BY *[Signature]*
DP-37



02/25/25
01/22/25
12/13/24
11/15/24
Date

1 ADDENDUM 1
C BID AND PERMIT
B 90% REVIEW SET
A 30% REVIEW SET
Issue/Revision/Submission No.



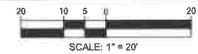
BOHLER ENGINEERING
THORSON BAKER + ASSOCIATES

CHASE BANK
RETAIL BRANCH
515 S. RIDGE RD
WICHITA, KS 67209
LANDSCAPE PLAN



Project Manager
D. CASEY
Drawn
B. KROEKER
Checked
TBD
Issue Drawing Date
01/22/25
Project Number
CHA02.70

THIS PLAN TO BE UTILIZED FOR LANDSCAPE PURPOSES ONLY



L-101

This document is the property of Bohler-Hoffel-Dorsey, Inc. Neither the document nor the information it contains may be copied or used in any other form without the express written consent of Bohler-Hoffel-Dorsey, Inc.

N/E: INSPIRED MEY, L.L.C.
446 W. WASHINGTON ST., SUITE 200
INDIANAPOLIS, IN 46202
APR: 00242116

UTILITY EASEMENT
FILM 1930, PG. 915

N/E: KT INVESTMENTS, L.L.C.
A PORTION OF LOTS 1 & 2, RIDGE PLAZA 10TH ADDITION, M-1 6-21
MAILING: 706 CLUBHOUSE DR, APTOS, CA 95003
APR: 00242117
AREA: 34,589 SQ. FT. / 0.734 ACRES

N/E: INSPIRED MEY, L.L.C.
MAILING: P.O. BOX 30815
INDIANAPOLIS, IN 46230
APR: 00242116