

W MacArthur RD

1,024'± TO S. MERIDIAN AVE

**O'Reilly Auto Parts**  
 85'-0" X 85'-0"  
 SQ. FT. = 7,225  
 BUILDING TYPE: CMU  
 PORTAL: 52'-0"  
 FINISH FLOOR EL. 1287.50'

LANDSCAPE CALCULATIONS	
AVERAGE LOT DEPTH	250 FT.
SQUARE FOOTAGE FACTOR	19 SQ FT PER LIN. FT.
LINEAL FT STREET FRONTAGE	222 LIN. FT.
TOTAL SQ. FT. OF LANDSCAPE STREET YARD REQUIRED	2220 SQ. FT.
STREET YARD TREES REQUIRED	5 SHADE TREES
STREET YARD TREES PROVIDED	5 SHADE TREES
PARKING LOT TREES REQUIRED	3 SHADE TREES
PARKING LOT TREES PROVIDED	1 ORNAMENTAL TREE (2.5 SHADE TREES APPLIED FROM STREET YARD REQUIREMENT)
PARKING LOT SCREENING IS PROVIDED WITH SHRUBS.	
NO BUFFER IS REQUIRED.	
44 PARKING SPACES PROVIDED	

PLANTING SCHEDULE					
REFER TO PROJECT MANUAL FOR ADDITIONAL REQUIREMENTS					
ALL PLANTINGS MAY BE SUBSTITUTED DUE TO REGION OR LOCAL REQUIREMENTS IF NECESSARY					
MARK	COMMON NAME	BOTANICAL NAME	SIZE	DETAIL	NOTES
(A)	OCTOBER GLORY RED MAPLE	ACER RUBRUM 'OCTOBER GLORY'	2 1/2" CALIPER MIN.	5A1.2	WELL BRANCHED, FULL HEAD, 10' HEIGHT MIN., B & B
(B)	OSAGE ORANGE	MACLURA POMIFERA	1 1/2" CALIPER MIN.	5L1.2	WELL BRANCHED, FULL HEAD, 8' HEIGHT MIN., B & B
(C)	GOLDEN BARBERRY	BERBERIS THUNBERGII ATRO. 'GOLDEN'	3' MATURE HEIGHT MIN.	4L1.2	FULL PLANT

**GENERAL NOTES**

- (A) REFER TO PROJECT MANUAL FOR ADDITIONAL REQUIREMENTS.
- (B) SITE CONDITIONS BASED UPON SURVEY PROVIDED BY OWNER. CONTRACTOR TO FIELD VERIFY EXISTING CONDITIONS BY DETAILED INSPECTION PRIOR TO SUBMITTING BID AND BEGINNING CONSTRUCTION. NOTIFY ARCHITECT IF EXISTING CONDITIONS DEVIATE SUBSTANTIALLY FROM THOSE INDICATED HEREIN.
- (C) REFER TO CIVIL DRAWINGS FOR ADDITIONAL REQUIREMENTS. COORDINATE WORK WITH OTHER SITE RELATED DEVELOPMENT DRAWINGS.
- (D) ALL PLANTING TYPES SHALL COMPLY WITH LOCAL GOVERNING CODES AND REGULATIONS. CONFORM TO REQUIREMENTS OF PLANT LIST AND TO THE AMERICAN ASSOCIATION OF NURSEYMEN "AMERICAN STANDARD OF NURSERY STOCK" AND "HORTICULTURAL STANDARDS" AS TO SPECIES, AGE, SIZE, AND PLANTING RECOMMENDATIONS.
- (E) NO MATERIAL SUBSTITUTIONS SHALL BE MADE WITHOUT THE ARCHITECT'S PRIOR WRITTEN APPROVAL. ALTERNATE MATERIALS OF SIMILAR SIZE AND CHARACTER MAY BE CONSIDERED IF SPECIFIED PLANT MATERIALS CANNOT BE OBTAINED.
- (F) PLANT LOCATIONS ARE APPROXIMATE. ADJUST AS NECESSARY TO AVOID CONFLICTS.
- (G) PROVIDE 4" TOPSOIL AT ALL SOD, SEED AND PLANTING AREAS. GRADE SHALL BE ADJUSTED FOR SOD THICKNESS. REFER TO CIVIL SITE GRADING PLAN FOR SLOPE REQUIREMENTS.
- (H) WHEN CLAY SOIL IS ENCOUNTERED IN THE ESTABLISHED AREA OF THE LAWN OR THE INSTALLATION OF PLANT MATERIAL IT SHALL BE IMPROVED IN ACCORDANCE WITH STANDARD TRADE PRACTICE.
- (I) RE-ESTABLISH TURF IN AREAS DISTURBED BY GRADING OR UTILITY TRENCHING IN THE RIGHT-OF-WAY.
- (J) PRIOR TO INSTALLATION, GENERAL CONTRACTOR TO CONFIRM THAT LIGHT POLES, LANDSCAPING AND UTILITIES DO NOT CONFLICT WITH SIGN LOCATION SHOWN. IF ANY POTENTIAL CONFLICT IS DISCOVERED, GENERAL CONTRACTOR IS TO CONTACT OWNER'S REPRESENTATIVE BEFORE PROCEEDING WITH THE WORK.
- (K) EXISTING TREES, BUSH, PLANTINGS, TO REMAIN TO BE PROTECTED AS REQUIRED. REPLACE AND/OR REPAIR EXISTING TREES, BUSH, PLANTINGS DAMAGED DUE TO CONTRACTOR ACTIVITIES.

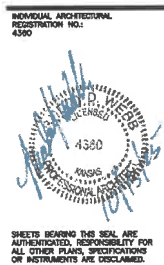
**KEY NOTES**

- 1 AREA OF HYDRO MULCH OR SEED AND STRAW, UNLESS NOTED OTHERWISE, ALL AREAS DISTURBED BY CONSTRUCTION ARE FIRST TO BE FINE GRADED AND THEN FOLLOWED BY HYDRO MULCH OR SEED AND STRAW OVER MIN. 4" TOPSOIL STOCKPILED FROM SITE OR HAULED IN AS REQUIRED.
- 2 AREA OF SOD, REFER TO DETAIL 1L1.2.
- 3 CREEK GRAVEL, REFER TO DETAIL 2L1.2.
- 4 LANDSCAPE EDGING, REFER TO DETAIL 2L1.2. PROVIDE AT ALL GROUND COVER TYPE TRANSITIONS.

**SYMBOLS LEGEND**

- NOTE: REFER TO SURVEY SHEET FOR SYMBOLS LEGEND OF EXISTING CONDITIONS.
- NEW AREA OF LANDSCAPE GRAVEL
  - NEW AREA OF SOD
  - SHRUB PLANTING
  - UNDER STORY TREE
  - CANOPY TREE

CAUTION: INFORMATION ON THIS DRAWING CONCERNING TYPE AND LOCATION OF UNDERGROUND AND OTHER UTILITIES IS NOT GUARANTEED TO BE ACCURATE OR ALL INCLUSIVE. THE CONTRACTOR IS RESPONSIBLE FOR MAKING HIS OWN DETERMINATION AS TO THE TYPE AND LOCATION OF UNDERGROUND AND OTHER UTILITIES AS MAY BE NECESSARY TO AVOID DAMAGE THERETO.



**O'Reilly AUTO PARTS**  
 PROJECT OFFICE  
 503 BOONVILLE RD  
 SPRINGFIELD, MISSOURI 65902  
 (417) 882-2674 TELEPHONE

PROJECT:  
**NEW O'REILLY AUTO PARTS STORE**  
**2751 W MACARTHUR RD.**  
**WICHITA, KANSAS**  
**LANDSCAPE PLAN**

**Buddy Webb, NCARB, AIA**  
**Architect - Consultant**  
 3067 EAST CAIRO  
 SPRINGFIELD, MISSOURI 65902  
 (417) 877-1386 TELEPHONE

DRAWN BY: AS  
 CHECKED BY: RV  
 DATE: 04/03/25  
 REVISION:  
 #2 10/08/25  
 PROJECT NUMBER: W13  
 SHEET NUMBER: L1.1

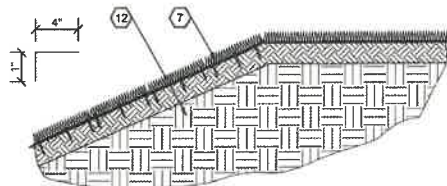
LANDSCAPE PLAN

APPROVED 10/21/25 BY *[Signature]*  
 RID #52  
 Supercedes previous approval

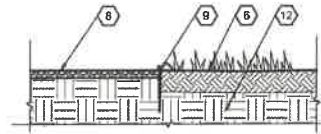
**1 LANDSCAPE PLAN**  
 L1.1 SCALE: 1" = 20'-0"



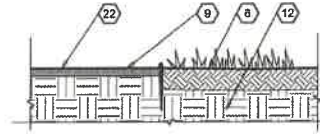
DESIGNS, DRAWINGS AND SPECIFICATIONS ARE INSTRUMENTS OF SERVICE AND ARE THE PROPERTY OF THE DESIGN PROFESSIONAL. REPRODUCTION PROHIBITED WITHOUT THE EXPRESSED WRITTEN CONSENT OF THE DESIGN PROFESSIONAL. © COPYRIGHT 2025



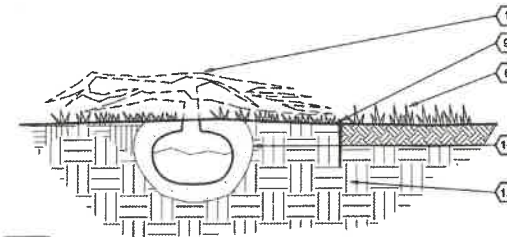
**1 SOD DETAIL**  
L1.2 SCALE: 3/4" = 1'-0"



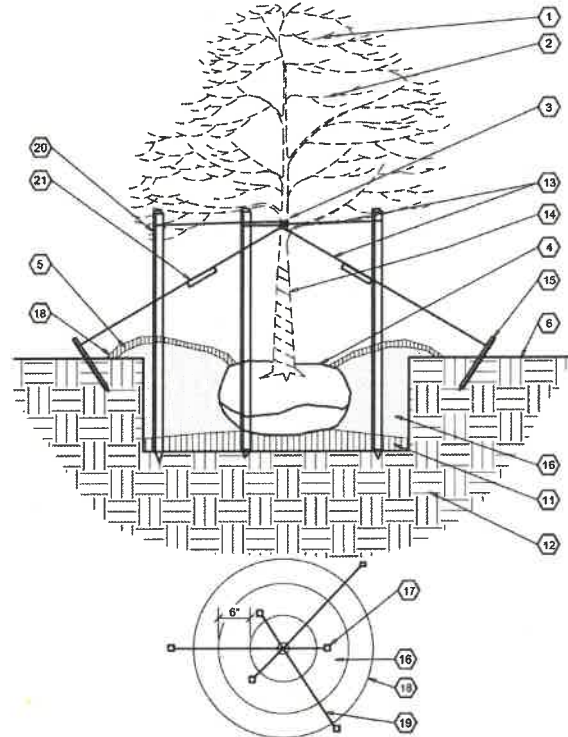
**2 LANDSCAPE GRAVEL DETAIL**  
L1.2 SCALE: 3/4" = 1'-0"



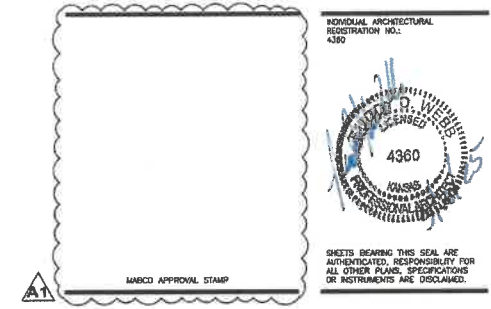
**3 MULCH DETAIL**  
L1.2 SCALE: 3/4" = 1'-0"



**4 SMALL SHRUB DETAIL**  
L1.2 SCALE: 3/4" = 1'-0"



**5 LARGE DECIDUOUS TREE**  
L1.2 SCALE: 3/4" = 1'-0"



**GENERAL NOTES**

- (A) REFER TO PROJECT MANUAL AND SCOPE OF WORK SCHEDULE FOR ADDITIONAL REQUIREMENTS.
- (B) REFER TO LANDSCAPE PLAN FOR PLANTING TYPES AND LOCATIONS
- (C) COORDINATE WORK WITH OTHER SITE RELATED DEVELOPMENT DRAWINGS.

**KEY NOTES**

- (1) PLANTING, REFER TO PLANTING SCHEDULE FOR TYPES.
- (2) SET TREE LEVEL AND PLUM STRAIGHTEN AFTER SETTLEMENT IF NEEDED.
- (3) ENCASE WIRE AROUND TRUNK IN BLACK RUBBER. MOVE UP ABOVE EQUAL TO 1/2 TO 1/3 OF THE HEIGHT OF TREE.
- (4) SET TREE WITH TOP 1/3 OF ROOT ABOVE FINISH GRADE.
- (5) REFER TO LANDSCAPE PLAN FOR GROUND COVER TYPE AND LOCATIONS. PROVIDE 3" DEEP 5/8" CREEK GRAVEL OVER BLACK 4 MIL. VISQUEEN VAPOR BARRIER OR 3" SHREDDED CYPRESS MULCH OVER BLACK 4 MIL. VISQUEEN VAPOR BARRIER.
- (6) LAWN, REFER TO LANDSCAPE PLAN FOR TYPE AND LOCATIONS. PROVIDE 4" TOPSOIL AT ALL SOD, SEED AND PLANTING AREAS. GRADE SHALL BE ADJUSTED FOR SOD THICKNESS. REFER TO CIVIL SITE GRADING PLAN FOR SLOPE REQUIREMENTS.
- (7) SOD, REFER TO LANDSCAPE PLAN FOR LOCATIONS. PLACE THREE PINS EVERY 2'-0", SPACING EQUALLY. PROVIDE 4" TOPSOIL AT ALL SOD AREAS. GRADE SHALL BE ADJUSTED FOR SOD THICKNESS. REFER TO CIVIL SITE GRADING PLAN FOR SLOPE REQUIREMENTS.
- (8) 3" DEEP, 5/8" CREEK GRAVEL OVER BLACK 4 MIL. VISQUEEN VAPOR BARRIER.
- (9) 4" BLACK POLY VINYL EDGING
- (10) NOT USED
- (11) COMPACTED PLANTING
- (12) SUB GRADE
- (13) TWO STRANDS OF WIRE
- (14) TRUNK WRAP
- (15) 2" X 2" X 10" WOOD STAKES BURY BELOW FINISH GRADE
- (16) PREPARED PLANTING MIXTURE.
- (17) TREES 6'-0" IN HEIGHT OR LESS SHALL BE STAKED
- (18) EXTENTS OF PLANTING BERM TO HOLD WATER
- (19) TREES TALLER THAN 3'-0" MUST BE TIED.
- (20) 2" X 4" STAKE - OR - METAL FENCE POST
- (21) 1" X 4" X 10" WHITE WOOD FLAG
- (22) 3" DEEP SHREDDED CYPRESS MULCH OVER BLACK VISQUEEN VAPOR BARRIER.

**Reilly AUTO PARTS**  
CORPORATE OFFICES  
233 SOUTH PATTERSON  
SPRINGFIELD, MISSOURI 65802  
(417) 886-2674 TELEPHONE

PROJECT:  
**NEW O'REILLY AUTO PARTS STORE**  
2751 W MACARTHUR RD.  
WICHITA, KANSAS

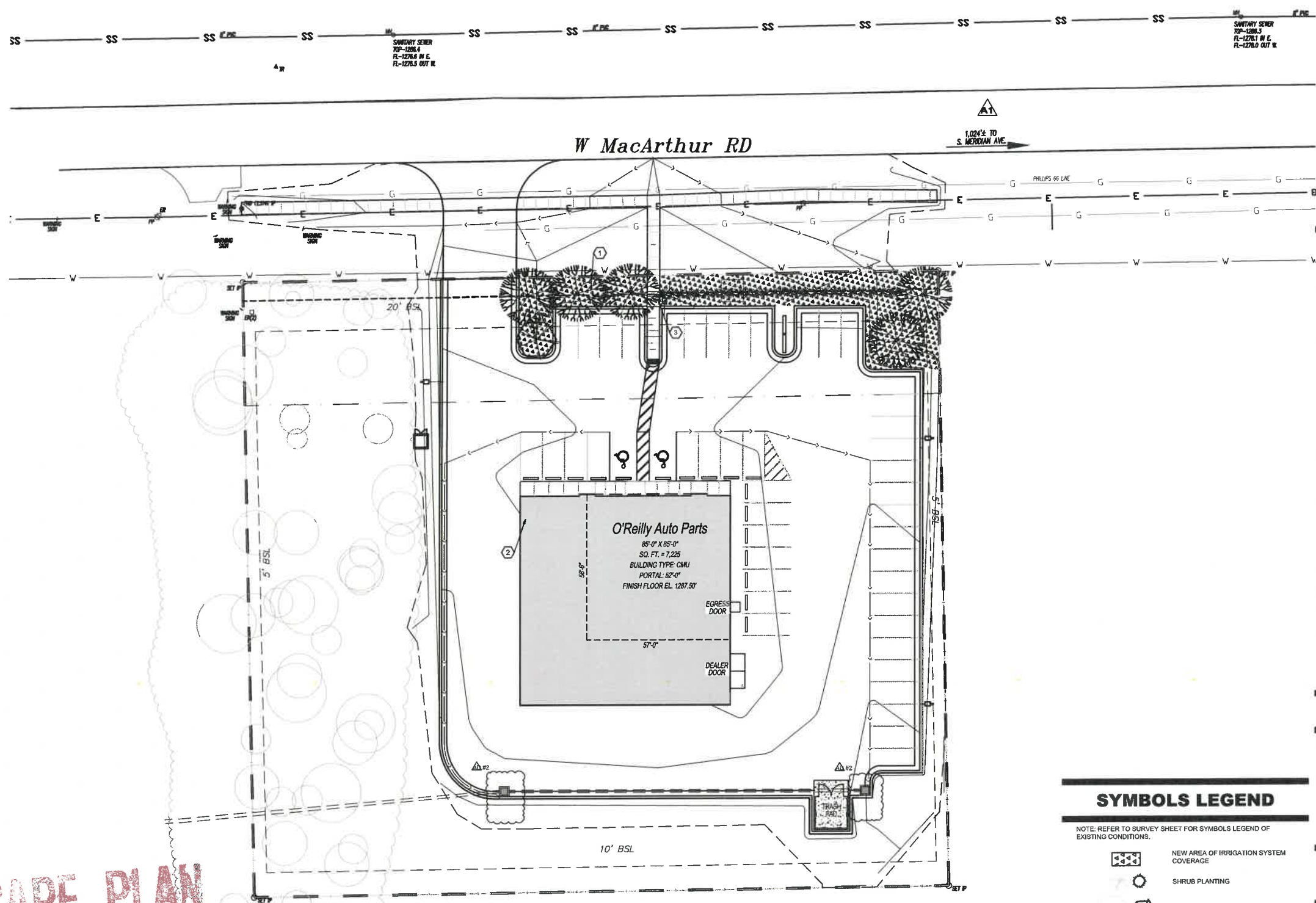
**Buddy Webb, NCARB, AIA**  
**Architect - Consultant**  
3057 EAST CAIRO  
SPRINGFIELD, MISSOURI 65802  
(417) 877-1385 TELEPHONE

DRAWN BY:	CHECKED BY:
AS	RV
DATE:	
04/03/25	
REVISION:	
A1 05/20/25	
PROJECT NUMBER:	
W13	
SHEET NUMBER:	

**L1.2**

**LANDSCAPE PLAN**

APPROVED 10/21/25 BY *[Signature]*  
PUD #52  
Supercedes previous approval  
2 of 3



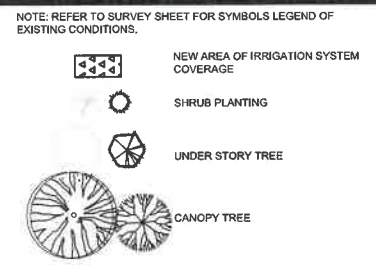
**GENERAL NOTES**

- A REFER TO PROJECT MANUAL FOR ADDITIONAL REQUIREMENTS.
- B REFER TO CIVIL AND SITE UTILITY DRAWINGS FOR ADDITIONAL REQUIREMENTS. COORDINATE WORK WITH OTHER SITE RELATED DEVELOPMENT DRAWINGS.
- C PRIOR TO INSTALLATION, GENERAL CONTRACTOR TO CONFIRM THAT LIGHT POLES, LANDSCAPING AND UTILITIES DO NOT CONFLICT WITH SIGN LOCATION SHOWN. IF ANY POTENTIAL CONFLICT IS DISCOVERED, GENERAL CONTRACTOR IS TO CONTACT OWNER'S REPRESENTATIVE BEFORE PROCEEDING WITH THE WORK.
- D IRRIGATION SYSTEM TO BE DESIGNED BY CONTRACTOR FOR SHOWN COVERAGE AREAS INDICATED. CONTRACTOR SHALL BE RESPONSIBLE FOR PROVIDING A COMPLETE AND OPERABLE IRRIGATION SYSTEM IN ACCORDANCE WITH GOVERNING CODES, ORDINANCES, AND AUTHORITIES HAVING JURISDICTION. SUBMIT SHOP DRAWINGS FOR REVIEW AND APPROVAL AS SPECIFIED.
- E VERIFY MINIMUM STATIC WATER PRESSURE IS AVAILABLE AT THE PROJECT SITE PRIOR TO DESIGN AND BEGINNING CONSTRUCTION.
- F COORDINATE IRRIGATION SYSTEM WITH LANDSCAPING AND PLANTING. REFER TO LANDSCAPE PLAN. WHEN TRENCHING AVOID TREE ROOT BALLS AND INSTALL HEADS AT APPROPRIATE LOCATIONS.
- G ADJUST ALL NOZZLES TO AVOID OVERTHROW ON SIDEWALKS, PAVING, WALLS, ROADWAYS, AND BEYOND PROPERTY LINES. UNLESS OTHERWISE INDICATED, THROTTLE ALL IRRIGATION CONTROL VALVES AS REQUIRED TO PREVENT FOGGING. ADJUST ARC AND RADIUS OF REQUIRED SPRINKLERS AS NEEDED.
- H SET CONTROLLER RUN TIMES TO MATCH PLANT WATER NEEDS AND SOIL CONDITIONS.
- I INSTALL RISERS 18" FROM WALLS AND A MINIMUM OF 12" FROM ANY SIDEWALK OR ROAD.
- J TOP OF SPRAY AND ROTOR HEADS SHALL BE SET AT TOP OF SOD OR TOP OF MULCH LAYERS.
- L PROVIDE RAIN SENSOR AND ANTI-FREEZE ASSEMBLY ON IRRIGATION SYSTEM.
- M THE CONTRACTOR IS FULLY RESPONSIBLE FOR THE WORK UNTIL OWNER GIVES FINAL ACCEPTANCE.
- N ALL CIRCUIT PIPE IS TO BE CLASS 160 PVC OR HIGHER GRADE.
- O ALL MAIN FITTINGS SHALL BE REINFORCED WITH 2000 PSI POURED CONCRETE THRUST BLOCKS.
- P PROVIDE COMPRESSED AIR QUICK CONNECT BRASS FITTING IN VALVE BOX FOR WINTERIZATION. LOCATE AS CLOSE TO WATER SOURCE AS POSSIBLE.

**KEY NOTES**

- 1 APPROXIMATE LOCATION OF LAWN IRRIGATION METER WITH BACK FLOW PREVENTION PER CITY REQUIREMENTS. COORDINATE PLANTINGS TO AVOID INTERFERENCE AS NECESSARY. REFER TO UTILITIES SITE PLAN.
- 2 IRRIGATION CONTROLLER LOCATION INSIDE OF BUILDING. PROVIDE FREEZE SENSOR AND RAIN SENSOR ON OUTSIDE OF BUILDING.
- 3 4" DIAMETER SCHEDULE 40 PVC SLEEVES UNDER PAVEMENT FOR ROUTING OF IRRIGATION SYSTEM. PROVIDE END CAPS AND FULL WIRE.

**SYMBOLS LEGEND**



**COVERAGE REQUIREMENTS**

IRRIGATION HEAD SHALL BE PLACED TO PROVIDE 100% OVERLAP HEAD-TO-HEAD COVERAGE.

CAUTION: INFORMATION ON THIS DRAWING CONCERNING TYPE AND LOCATION OF UNDERGROUND AND OTHER UTILITIES IS NOT GUARANTEED TO BE ACCURATE OR ALL INCLUSIVE. THE CONTRACTOR IS RESPONSIBLE FOR MAKING HIS OWN DETERMINATION AS TO THE TYPE AND LOCATION OF UNDERGROUND AND OTHER UTILITIES AS MAY BE NECESSARY TO AVOID DAMAGE THERETO.

**811**  
Know what's below  
Call before you dig.



**O'Reilly AUTO PARTS**  
CORPORATE OFFICES  
1000 W. WASHINGTON  
SPRINGFIELD, MISSOURI 65802  
(417) 882-2874 TELEPHONE

PROJECT:  
**NEW O'REILLY AUTO PARTS STORE  
2751 W MACARTHUR RD.  
WICHITA, KANSAS**

**LANDSCAPE IRRIGATION PLAN**

**Buddy Webb, NCARB, AIA  
Architect - Consultant**  
3057 EAST CAIRO  
SPRINGFIELD, MISSOURI 65802  
(417) 877-1386 TELEPHONE

DESIGN BY:	CREATED BY:
AS	RV
DATE:	04/03/25
REVISION:	
Δ #2	10/08/25
PROJECT NUMBER:	W13
SHEET NUMBER:	

**L2.1**

**LANDSCAPE PLAN**

APPROVED 10/24/25 BY *[Signature]*  
PUD #52 3 FB  
Supersedes previous approval

**1 LANDSCAPE IRRIGATION PLAN**  
L2.1 SCALE: 1" = 20'-0"

COPYRIGHT 2025 - DESIGNS, DRAWINGS AND SPECIFICATIONS ARE INSTRUMENTS OF SERVICE AND ARE THE PROPERTY OF THE DESIGN PROFESSIONAL. REPRODUCTION PROHIBITED WITHOUT THE EXPRESSED WRITTEN CONSENT OF THE DESIGN PROFESSIONAL.