

GENERAL PLANTING NOTES

- PRIOR TO BEGINNING ANY WORK ON THE SITE, THE CONTRACTOR SHALL CONTACT THE OFFICE OF THE OWNER AND THE ARCHITECT/LANDSCAPE ARCHITECT FOR SPECIFIC INSTRUCTIONS RELEVANT TO THE SEQUENCING OF WORK.
- LANDSCAPE CONTRACTOR SHALL PROVIDE ALL LABOR, MATERIALS AND SERVICE NECESSARY TO FURNISH AND INSTALL PLANTINGS AS SPECIFIED HEREIN AND AS SHOWN ON THESE PLANS.
- NO MATERIAL SUBSTITUTIONS SHALL BE MADE WITHOUT THE OWNER'S APPROVAL. ALTERNATE MATERIALS OF SIMILAR SIZE AND CHARACTER MAY BE CONSIDERED IF SPECIFIED PLANT MATERIALS CANNOT BE OBTAINED. LANDSCAPE ARCHITECT RESERVES THE RIGHT TO REVISE PLANT LIST AS DEEMED NECESSARY.
- ALL PLANT LOCATIONS ARE APPROXIMATE, ADJUST AS NECESSARY TO AVOID CONFLICTS.
- QUANTITIES OF MATERIALS SHOWN ON THE PLANTING PLAN TAKE PRECEDENCE OVER QUANTITIES SHOWN ON THE PLANT MATERIAL SCHEDULE. LANDSCAPE CONTRACTOR SHALL BE RESPONSIBLE FOR VERIFYING ALL QUANTITIES ON THE PLANTING PLAN.
- UTILITIES HAVE BEEN SHOWN ON THE PLAN FOR ROUGH LOCATION OF SERVICES. CONTRACTOR SHALL LOCATE ALL UTILITIES BEFORE WORK. LOCATE EXACT UTILITY LOCATIONS BY CONTACTING KANSAS ONE-CALL CENTER. CONTRACTOR WILL BE RESPONSIBLE FOR THE REPAIR OF ANY DAMAGE HE MAY CAUSE TO UTILITIES.
- GENERAL CONTRACTOR SHALL PROVIDE 4" OF TOPSOIL AT ALL SOD AND PLANTING AREAS. GRADE SHALL BE ADJUSTED FOR SOD THICKNESS. ALL FINISH GRADING SHALL BE PERFORMED BY THE LANDSCAPE CONTRACTOR.
- SOD TYPE SHALL BE LOCALLY AVAILABLE TALL FESCUE BLEND OR OTHER TURF GRASS RECOMMENDED FOR THE SPECIFIC AREA.
- BACKFILL FOR PLANT EXCAVATIONS TO BE CLEAN NATURAL SOIL, EXCAVATED FROM PLANTING PITS MIXED WITH COMPOST AND WELL-ROTTED MANURE AT A RATIO OF THREE (3) PARTS SOIL TO ONE (1) PART COMPOST AND WELL-ROTTED MANURE.
- FERTILIZE ALL PLANTS WITH 6-10-4 COMMERCIAL FERTILIZER AS DIRECTED BY INSTRUCTIONS ON FERTILIZER.
- AFTER PLANTING IS COMPLETED, REPAIR INJURIES TO ALL PLANTS AS REQUIRED. LIMIT AMOUNT OF PRUNING TO A MINIMUM NECESSARY TO REMOVE DEAD OR INJURED TWIGS AND BRANCHES. PRUNE IN SUCH A MANNER AS NOT TO CHANGE NATURAL HABIT OR SHAPE OF PLANT. MAKE CUTS FLUSH, LEAVING NO STUBS.
- ALL LANDSCAPE EDGING IS TO BE A 4" X 3/8" PAINTED STEEL EDGING. PLACE EDGING FLUSH WITH GRADE.
- INSTALL SHREDDED, HARDWOOD MULCH IN PLANT BEDS, AS NOTED ON PLAN, LANDSCAPE CONTRACTOR TO PROVIDE SAMPLE TO LANDSCAPE ARCHITECT OR OWNER'S REPRESENTATIVE FOR APPROVAL.
- PLACE 4" OF MULCH IN ALL TREES PLANTED IN TURF AREAS. AREAS RECEIVING MULCH ARE TO BE FREE OF WEEDS AND GRASS.
- PLANTING BEDS RECEIVING SHREDDED CEDAR WOOD MULCH ARE TO BE FREE OF WEEDS AND GRASS. TREAT BEDS WITH A PRE-EMERGENT HERBICIDE PRIOR TO MULCH PLACEMENT. APPLY IN ACCORDANCE WITH STANDARD TRADE PRACTICE.
- THE CONTRACTOR SHALL PROVIDE ALL WATER, WATERING DEVICES AND LABOR NEEDED TO IRRIGATE PLANT MATERIALS UNTIL ACCEPTANCE OF THE PROJECT'S PLANT MATERIALS. THE CONTRACTOR SHALL SUPPLY ENOUGH WATER TO MAINTAIN THE PLANT'S HEALTHY CONDITION.
- RE-ESTABLISH TURF IN AREAS DISTURBED BY GRADING OR UTILITY TRENCHING IN THE R.O.W.
- REESTABLISH TURF IN ALL AREAS DISTURBED BY THE CONSTRUCTION PROCESS AND WITHIN THE LIMITS OF DISTURBANCE BY SEED, SOD OR PLANNED PLANTING AREAS, AS NOTED ON PLAN.
- REPORT ANY DISCREPANCIES IN THE PLANTING PLAN TO THE OWNER'S REPRESENTATIVE PRIOR TO STARTING CONSTRUCTION.

LANDSCAPE CODE CALCULATIONS

LANDSCAPED STREET YARD REQUIRED:
 162 LF Amidon x 8 (Sq. Ft. Factor) = 1,296 SF Landscaped Streetyard Required
 2,823 SF Total Landscaped Street Yard Provided

1,296 / 500 = 2.5 or say 3 Street Trees Required
 2 Existing Trees + 2 Existing Upright Evergreen Trees = > 3 Street Yard Trees

PARKING LOT SCREENING AND LANDSCAPING REQUIRED:
 22 total Stalls/20 = 1.1 or say 2 Trees Required (One-half of Required Street Trees may be used)
 2 Parking Lot Trees Provided

Parking Lot is Screened with Shrubs

BUFFERS REQUIRED: NA

PLANT MATERIAL SCHEDULE

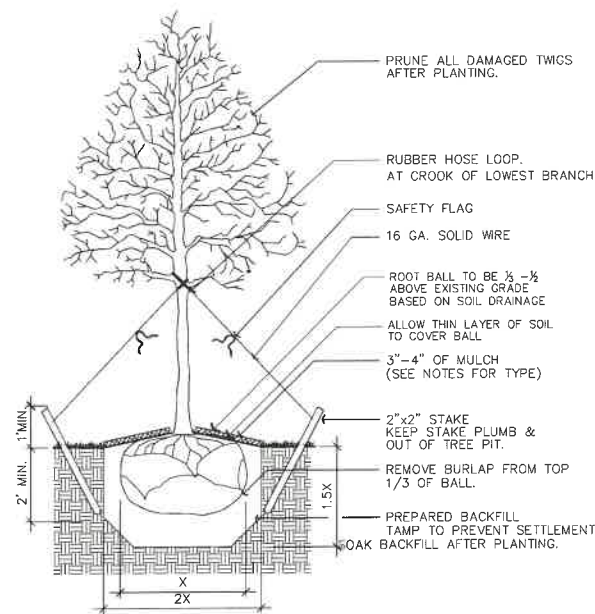
TAG	QTY.	COMMON NAME	BOTANICAL NAME	SIZE/REMARKS
		SHADE TREES		
		EVERGREEN TREES		
		ORNAMENTAL TREES		
		EVERGREEN SHRUBS		
GCJ	24	Gold Coast Juniper	Juniperus pfitzeriana 'Gold Coast'	2 Gal.
		DECIDUOUS SHRUBS		
AWS	24	Anthony Waterer Spirea	Spiraea japonica 'Anthony Waterer'	2 Gal.
		GRASSES & PERENNIALS		

PLANTING LEGEND

SOD/SEED

PAVEMENT

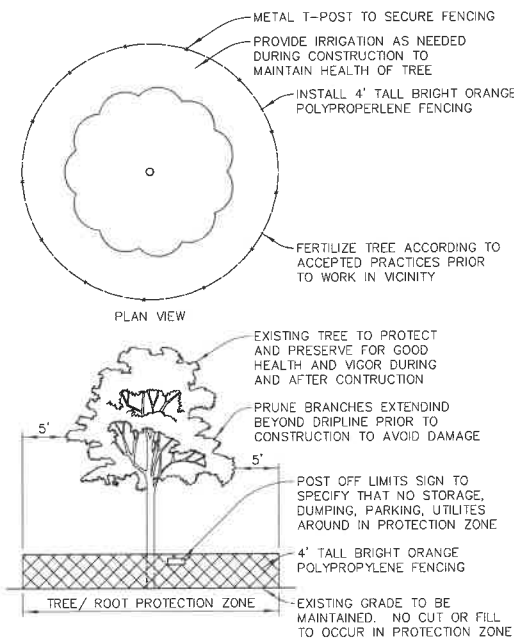
UTILITIES SHOWN REPRESENT THE BEST INFORMATION AVAILABLE FOR DESIGN. ADDITIONAL UTILITIES MAY BE PRESENT ON THIS PROJECT. THE CONTRACTOR SHALL BE RESPONSIBLE FOR DETERMINING THE EXACT LOCATION, DEPTH AND SIZE OF ALL UNDERGROUND UTILITIES PRIOR TO CONSTRUCTION. THE CONTRACTOR SHALL BE LIABLE FOR ANY DAMAGE CAUSED BY THE FAILURE TO DO SO.



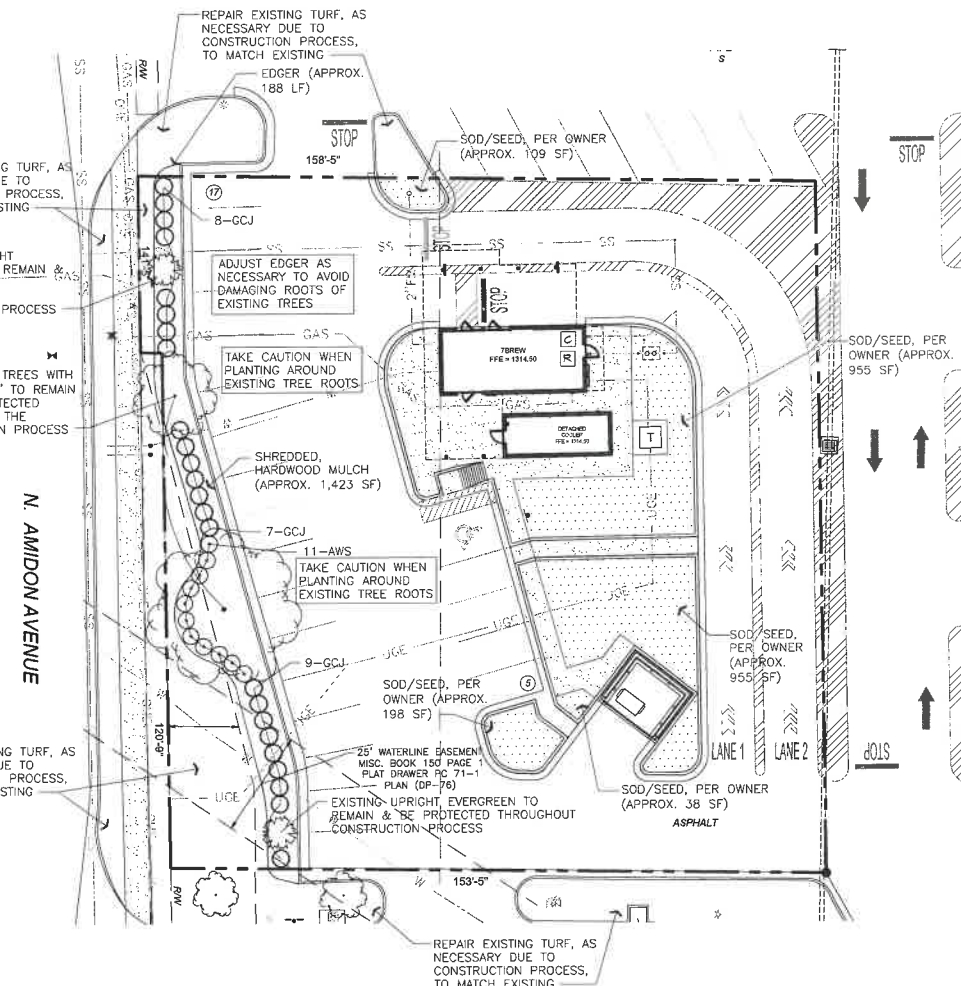
1 TREE PLANTING DETAIL

LEGAL DESCRIPTION

PORTION OF LOT 1, AMIDON PLAZA ADDITION
 25,100 SQ. FEET ± 0.576 ACRES ±
 APN: PORTION OF 087-123-06-0-43-04-011.00



2 TREE PRESERVATION DETAIL

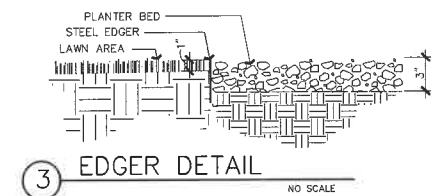


LANDSCAPE PLANTING PLAN

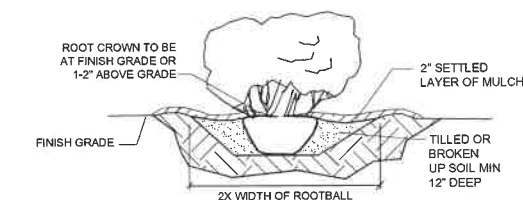
1" = 20'-0"

0 20' 40'

North



3 EDGER DETAIL



4 SHRUB PLANTING DETAIL

CUP DP-76

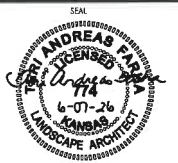
7 BREW LANDSCAPE PLAN

APPROVED BY: [Signature]

7 BREW LANDSCAPE PLAN
 Wichita, KS

REV.	DATE	DESCRIPTION

DRAWN BY: TER FARIA
 CHECKED BY:



DATE ISSUED: 05.07.20

SHEET NAME

LANDSCAPE PLAN

SHEET NUMBER

LS1.0

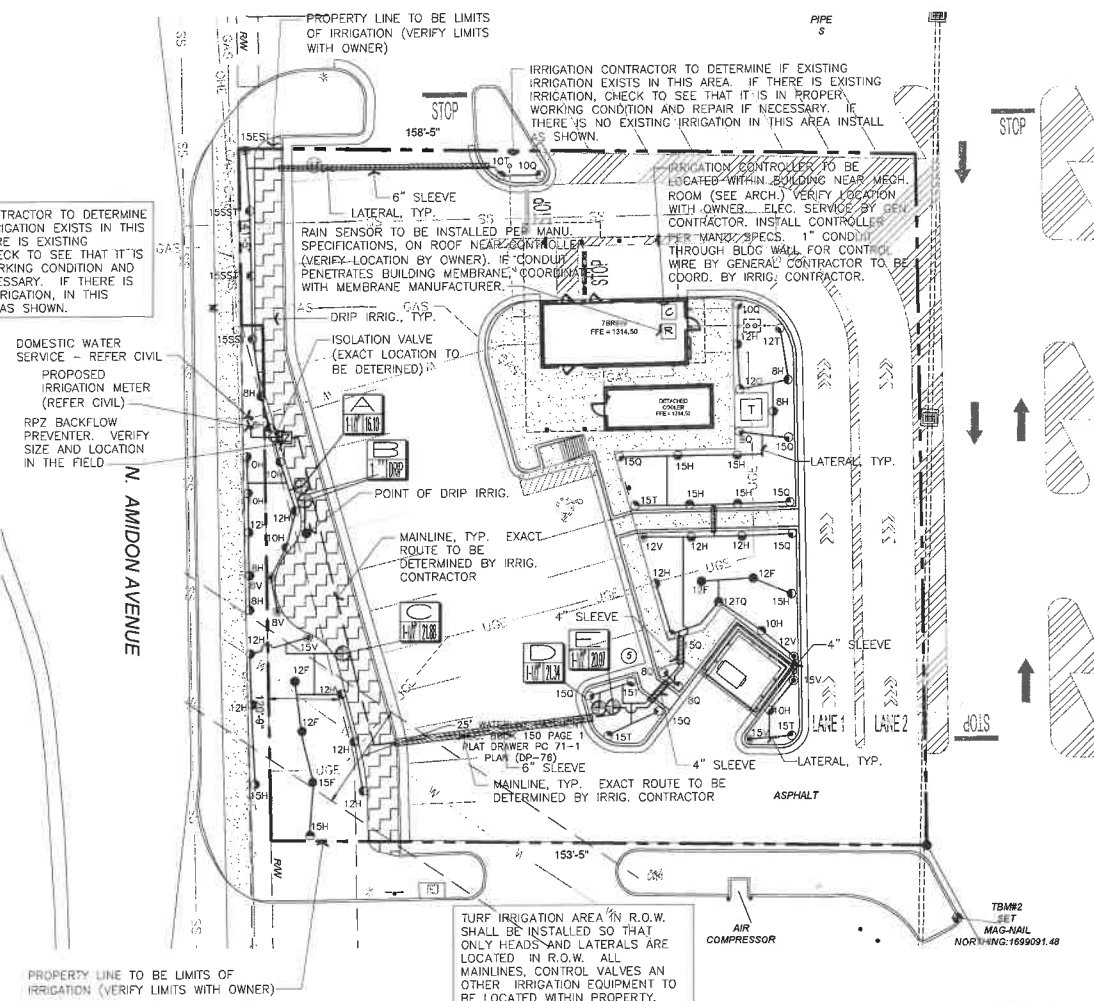
GENERAL IRRIGATION NOTES

1. THE DESIRED WATER COVERAGE OF THE IRRIGATION SYSTEM IS SHOWN ON THE DRAWINGS. THE CONTRACTOR IS TO INSTALL EQUIPMENT NECESSARY TO PROVIDE A COMPLETE, FUNCTIONAL SYSTEM THAT IS IN COMPLIANCE WITH APPLICABLE CODES AND REGULATIONS.
2. THE IRRIGATION CONTRACTOR SHALL SUBMIT SHOP DRAWINGS TO THE OWNER'S REPRESENTATIVE FOR APPROVAL, PRIOR TO CONSTRUCTION WHICH WILL ILLUSTRATE TYPE OF HEADS, VALVES, CONTROLLER, PIPING AND ACCESSORIES. IRRIGATION HEADS, VALVES AND CONTROLLER ARE TO BE FROM A SINGLE MANUFACTURER. ALL EQUIPMENT MUST HAVE A MANUFACTURER'S FIVE YEAR WARRANTY.
3. CONTRACTOR WILL VERIFY STATIC PRESSURE AND VOLUME OF SITE WATER SUPPLY AND ADJUST ENTIRE IRRIGATION SYSTEM ACCORDINGLY. EACH ZONE OF IRRIGATION SYSTEM IS TO BE DESIGNED WITH A MAXIMUM OF 35 GALLONS PER MINUTE. AS PART OF THE SHOP DRAWINGS, THE IRRIGATION CONTRACTOR WILL PROVIDE CALCULATIONS SHOWING PRESSURE LOSS FROM THE POINT OF CONNECTION TO THE FURTHEST HEAD AND FOR THE FURTHEST HEAD ON THE LARGEST ZONE. ADJUST DESIGN TO MEET AVAILABLE PRESSURES AND VOLUMES.
4. IRRIGATION PLAN IS A SCHEMATIC DRAWING TO REPRESENT DESIRED WATER COVERAGE. FIELD ADJUSTMENTS MAY BE NECESSARY TO AVOID UNFORESEEN OBSTACLES AND SIMPLIFY INSTALLATION. IRRIGATION TAP, IRRIGATION BLOW-OUT VALVE, ISOLATION GLOBE VALVE, BACKFLOW PREVENTION DEVICE (PVB OR RPZ MINIMUM), ENCLOSURE AND MANUAL DRAIN VALVE ARE TO BE LOCATED IN AREA SHOWN ON PLAN. IRRIGATION CONTRACTOR SHALL BE RESPONSIBLE FOR THE ABOVE ITEMS.
5. THE SYSTEM IS TO CONSIST OF SEPARATE DRIP IRRIGATION ZONES AND TURF SPRAY HEAD ZONES EACH WITH SEPARATE VALVES AND STATIONS ON THE CONTROLLER.
6. IRRIGATION CONTROLLER IS TO BE A HYBRID SOLID STATE TYPE WITH PLASTIC LOCKABLE CABINET. CONTROLLER MUST HAVE DUAL PROGRAMMING FOR TURF SPRAY ZONES AND DRIP IRRIGATION ZONES AND BE CAPABLE OF OPERATING MULTIPLE VALVES PER STATION. IRRIGATION CONTROLLER IS TO BE PLACED AS SHOWN ON IRRIGATION PLAN.
7. MANUAL DRAIN VALVES ARE TO BE LOCATED AT THE ENDS AND LOW POINTS OF THE IRRIGATION MAINLINE. PLACE MANUAL VALVES IN LATCHABLE VALVE BOX FOR EASY ACCESS. PLACE ONE CUBIC FOOT OF GRAVEL BELOW EACH VALVE.
8. AUTOMATIC DRAIN VALVES ARE TO BE LOCATED AT ALL LOW POINTS OF THE IRRIGATION LATERAL LINES. WHERE THE LOW POINT IS AT THE END OF A LINE, LOCATE THE VALVE A MINIMUM OF 12" FROM THE LAST SPRINKLER HEAD. PLACE VALVES ON TOP OF ONE CUBIC FOOT OF FILL GRAVEL.
9. PROVIDE PVC SLEEVES FOR IRRIGATION PIPES AND WIRING THAT CROSSES UNDER WALKS, STREETS AND CONCRETE PADS. COMBINE PIPING WHENEVER POSSIBLE TO REDUCE QUANTITY OF SLEEVING MATERIALS. WHEN INSTALLING IRRIGATION PIPE ALONG CURBS OR IN ISLANDS, PLACE PIPE AS CLOSE TO CURB AS POSSIBLE TO ALLOW FOR PLANTING OF TREES AND SHRUBS.
10. ADJUST ALL IRRIGATION EQUIPMENT SO SIDEWALKS, PAVING AND BUILDING REMAIN DRY OF DIRECT SPRAY OR EXCESS WATER RUN-OFF.

IRRIGATION ZONE SCHEDULE

I.D. LETTER	CONTROL STATION	GPM	VALVE SIZE	ZONE TYPE
CONTROLLER "A"	ZONE A	16.10	1-1/2"	TURF SPRAYS
	ZONE B	2	DRIP	DRIP
	ZONE C	21.88	1-1/2"	TURF SPRAYS
	ZONE D	21.34	1-1/2"	TURF SPRAYS
	ZONE E	20.07	1-1/2"	TURF SPRAYS
TOTAL-5				

UTILITIES SHOWN REPRESENT THE BEST INFORMATION AVAILABLE FOR DESIGN. ADDITIONAL UTILITIES MAY BE PRESENT ON THIS PROJECT. THE CONTRACTOR SHALL BE RESPONSIBLE FOR DETERMINING THE EXACT LOCATION, DEPTH AND SIZE OF ALL UNDERGROUND UTILITIES PRIOR TO CONSTRUCTION. THE CONTRACTOR SHALL BE LIABLE FOR ANY DAMAGE CAUSED BY THE FAILURE TO DO SO.



IRRIGATION LEGEND

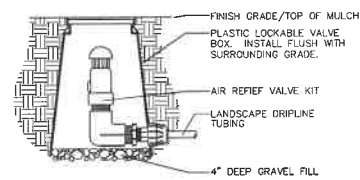
- 360 DEG. RAIN BIRD 1800 SERIES 6" POP-UP SPRAY HEAD
- 180 DEG. RAIN BIRD 1800 SERIES 6" POP-UP SPRAY HEAD
- 135 DEG. RAIN BIRD 1800 SERIES 6" POP-UP SPRAY HEAD
- 90 DEG. RAIN BIRD 1800 SERIES 6" POP-UP SPRAY HEAD
- VARIABLE ARC RAIN BIRD 1800 SERIES 6" POP-UP SPRAY HEAD
- SIDE STRIP RAINBIRD 1800 SERIES 6" POP-UP SPRAY HEAD
- END STRIP RAINBIRD 1800 SERIES 6" POP-UP SPRAY HEAD

- ▨ IRRIGATION SLEEVE - 80 SCHEDULE
- ▬ IRRIGATION MAINLINE - CLASS 200
- ▬ IRRIGATION LATERAL LINE - CLASS 160

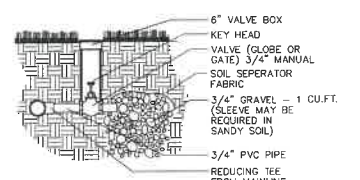
- △ ELECTRIC REMOTE CONTROL VALVE DESIGNATOR
- ▽ VALVE I.D. LETTER
- VALVE SIZE
- GALLONS PER MINUTE OR DRIP

- ⊕ ELECTRIC REMOTE CONTROL VALVE
- ⊘ ISOLATION VALVE
- ⊘ RAIN SENSOR
- ⊘ IRRIGATION CONTROLLER
- ⊘ IRRIGATION REDUCED PRESSURE ZONE BACKFLOW PREVENTION ASSEMBLY WITHIN FIBERGLASS ENCLOSURE

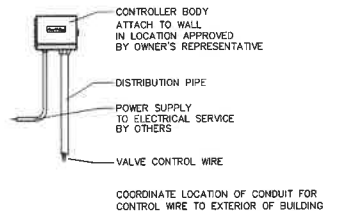
- DRIP IRRIGATION POINT OF CONNECTION LATERAL LINE AREA TO BE COVERED BY DRIP IRRIGATION ZONE



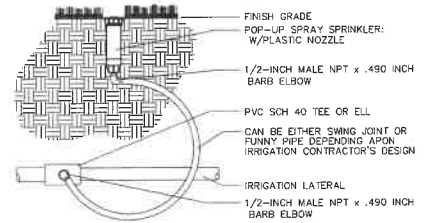
1 AIR RELIEF VALVE
LOCATED ON ALL LANDSCAPE DRIP TUBING ZONES NO SCALE



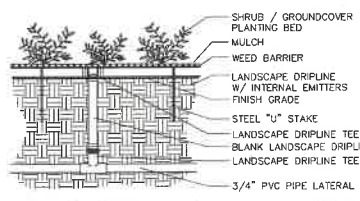
2 MANUAL DRAIN VALVE NO SCALE



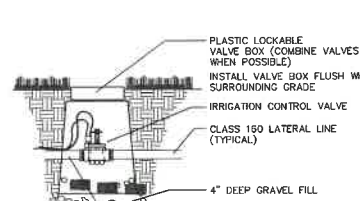
3 IRRIGATION CONTROLLER
INTERIOR/EXTERIOR WALL MOUNTED NO SCALE



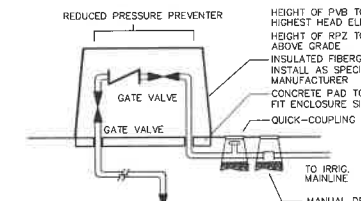
4 TURF 4" POP-UP SPRINKLER
PRESSURE REGULATING SPRINKLER NO SCALE



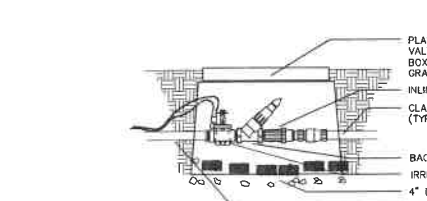
5 LANDSCAPE BED DRIP IRRIGATION
DRIPLINE TO BE INSTALLED BELOW THE MULCH/WEED BARRIER EMITTER SPACING TO BE 18\"/>



6 ELECTRIC REMOTE VALVE
SPRAY, ROTOR SPRINKLERS AND SHRUB BUBBLER ZONES AS OCCURS NO SCALE



7 BACKFLOW PREVENTER AND ENCLOSURE
LOCATION AS SHOWN ON IRRIGATION PLAN PVB OR RPZ AS DETERMINED BY LOCAL CODES AND SITE CONDITIONS NO SCALE



8 DRIP IRRIGATION CONTROL ZONE KIT
INCLUDES BALL VALVE, REMOTE CONTROL VALVE, INLINE FILTER AND PRESSURE REGULATOR NO SCALE

LANDSCAPE IRRIGATION PLAN

1" = 20'-0"

7 BREW
N. Amidon Avenue
Wichita, KS

REV.	DATE	DESCRIPTION
ISSUE DATE:	6/27/24	
PROJECT NUMBER:		
REV 1		

DRAWN BY: IBI FARIA
CHECKED BY: [Signature]

SHEET NAME
IRRIGATION PLAN
SHEET NUMBER

LS2.0