

RECOMMENDATION FROM METROPOLITAN AREA PLANNING COMMISSION TO
BOARD OF CITY COMMISSIONERSREQUEST FOR VACATION

CASE NO. V- 1172

CONSIDERED BY:

SUBDIVISION COMMITTEE: 2-3-83

PLANNING COMMISSION: 2-10-83

REQUEST FOR VACATION OF: portion of platted building setback

LOCATION: east of Rock Road in an area south of 35th Street North

LEGALLY DESCRIBED AS: The southwesterly 2.5 feet of the platted
8.5-foot building setback from the north-
easterly line of Lot 4, Block 1, Stonehedge,
An Addition to Wichita, Sedgwick County,
Kansas.REASON FOR REQUEST: building under construction encroaches into
the platted setbackNAME OF APPLICANT: Lloyd A. McBride
16040 E. 29th St. North, 67228

REPRESENTATIVE FOR APPLICANT: None

PROTESTORS, IF ANY: None

PLANNING COMMISSION RECOMMENDATION: Approve the vacation request
subject to all proceedings being without cost to the City, County,
or any utility company.Gardner moved, Goebel seconded and it carried unanimously. Cazal and
Chisholm were absent.

ATTACHMENTS: Ordinance (Approved as to form by the Department of Law)

ACTION: Approve the request as recommended by the Metropolitan Area
Planning Commission and place the ordinance on its first reading.

(97062) (Published in The Daily Record MARCH 4, 1903)

ORDINANCE NO. 38-299

AN ORDINANCE VACATING A PORTION OF A PLATTED BUILDING SETBACK ON LOT 4, BLOCK 1, STONEHEDGE, AN ADDITION TO WICHITA, SEDGWICK COUNTY, KANSAS.

BE IT ORDAINED BY THE GOVERNING BODY OF THE CITY OF WICHITA, KANSAS:

SECTION 1. That the building setback described as follows, to-wit:

The southwesterly 2.5 feet of the platted 8.5-foot building setback from the northeasterly line of Lot 4, Block 1, Stonehedge, An Addition to Wichita, Sedgwick County, Kansas; (MAPC NO. V-1172);

be and the same is hereby vacated in accordance with K.S.A. 13-443, subject, however, to the concurrence in such vacation by the Board of County Commissioners as by law provided.

SECTION 2. That it is hereby recommended to the Board of County Commissioners of Sedgwick County, Kansas, that said above described setback be vacated by said Board in case a proper petition is filed under the provisions of K.S.A. 12-504, 12-505 and K.S.A. 12-506.

SECTION 3. That this Ordinance shall be in force and take effect from and after its passage and publication once in the official city paper.

PASSED AND APPROVED at Wichita, Kansas, this 1ST day of MARCH, 1903.

ATTEST:

Albert J. Kirk, Mayor

Donald C. Gisick, City Clerk

SEAL

P A R K

LOT 'A

35TH. ST. NORTH

RESERVE "D"

RESERVE "G"
FLOODWAY

RESERVE "C"

COM

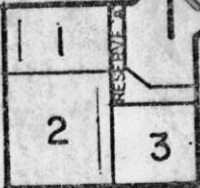
2

7

1
2
3
4

4

PA



3

RESERVE "B"

12

3

7

RESERVE "C"

RESERVE "H"
FLOODWAY

0

RESERVE "E"

PA

14

S

Rock Rd.

R

DRAINAGE
G E