

SEDGWICK COUNTY FIRE STATION NO. 39 ADDITION

SEDGWICK COUNTY, KANSAS

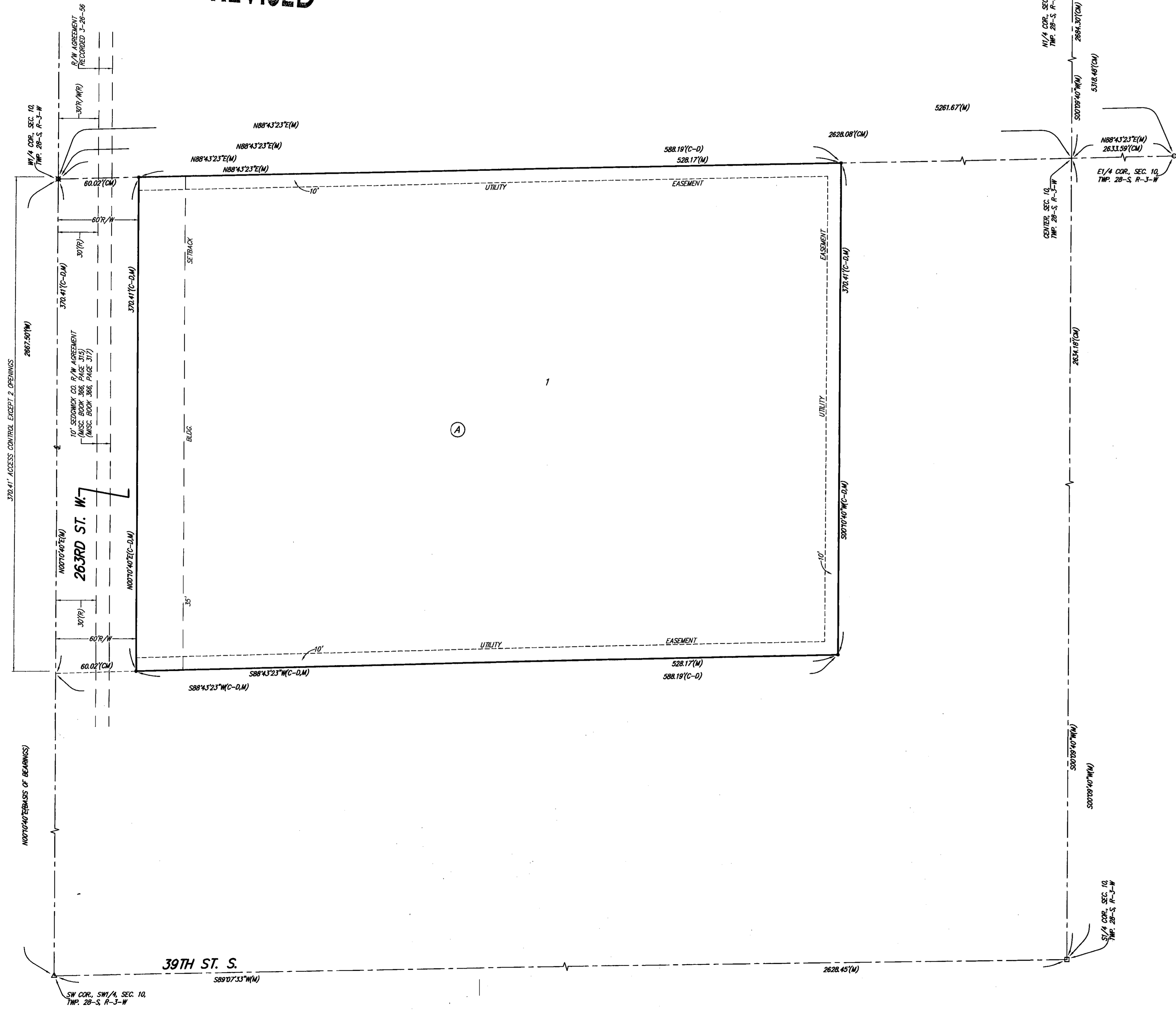
FINAL TRACING REC'D

Sub 2009-05

17-24-09

FILE COPY

REVISED



State of Kansas) SS We, Baughman Company, P.A., Surveyors in Sedgwick County) and state do hereby certify that we have surveyed and platted "SEDGWICK COUNTY FIRE STATION NO. 39 ADDITION", Sedgwick County, Kansas and that the accompanying plat is a true and correct exhibit of the property surveyed, described as the west 370.00 feet of the north 370.29 feet of the SW 1/4 of Sec. 10, Twp. 28-S, R-3-W of the 6th P.M., Sedgwick County, Kansas, subject to road rights-of-way of record.

Existing public easements and dedications being vacated by virtue of K.S.A. 12-512(b).

Baughman Company, P.A.

This plat of "SEDGWICK COUNTY FIRE STATION NO. 39 ADDITION", Sedgwick County, Kansas has been submitted to and approved by the Wichita-Sedgwick County Metropolitan Area Planning Commission, Wichita, Kansas.

Dated this 17th day of June, 2009.

Wichita-Sedgwick County Metropolitan Area Planning Commission

Darrell Downing, Chair
Darrell Downing

John L. Schlegel, Secretary
John L. Schlegel



Michael G. Conroy
Michael G. Conroy, Surveyor

Know all men by these presents that we, the undersigned, have caused the land in the surveyors certificate to be platted into a Lot, a Block, and a Street, to be known as "SEDGWICK COUNTY FIRE STATION NO. 39 ADDITION", Sedgwick County, Kansas. The utility easements are hereby granted as indicated for the construction and maintenance of all public utilities. Access controls shall be as depicted on the face of the plat and are hereby granted to the appropriate governing body. The permitted opening locations shall be as determined by the Engineer for the appropriate governing body.

Sedgwick County Fire District #1

Kelly Parks, Chairman
Kelly Parks



State of Kansas) SS The foregoing instrument acknowledged before me, this 17 day of June, 2009, by Kelly Parks, Chairman of Sedgwick County Fire District #1, on behalf of Sedgwick County Fire District #1.

Katie Asbury, Notary Public
KATIE ASBURY

My App't. Exp. 4/13/13

This plat approved and all dedications shown hereon accepted by the Board of Commissioners of Sedgwick County, Kansas, this _____ day of _____, 2009.

_____, Chairman
Kelly Parks

ATTEST: _____, County Clerk
Kelly B. Arnold

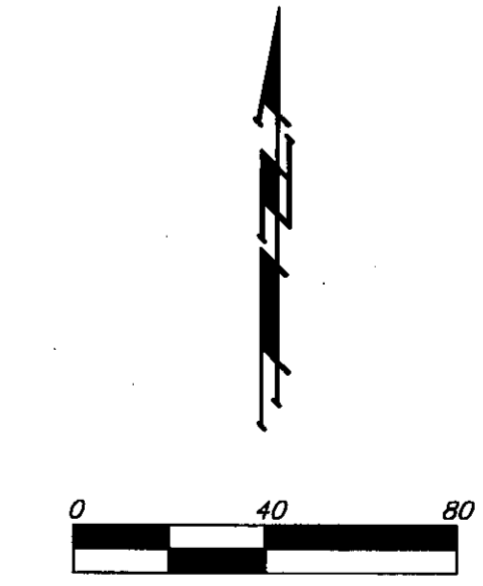
Reviewed in accordance with K.S.A. 58-2005 on this 23rd day of June, 2009.



Tricia L. Robello, Notary Public
Tricia L. Robello, L.S. #1246
Deputy County Surveyor
Sedgwick County, Kansas

Entered on transfer record this _____ day of _____, 2009.

_____, County Clerk
Kelly B. Arnold



- = #4 REBAR W/ "BAUGHMAN" CAP (SET)
- △ = #4 REBAR W/ ILLEGIBLE CAP (FOUND)
- = #5 REBAR W/ "GARBER" CAP (FOUND)
- = 1/2" IRON PIPE (FOUND)
- ⊗ = 3/4" IRON PIPE (FOUND)

- (M) = MEASURED
- (R) = RECORD MEASUREMENT
- (CM) = CALCULATED PER MEASURED INFO.
- (C-D) = CALCULATED PER DESCRIBED INFO.

State of Kansas) SS This is to certify that this plat has been filed for record in the office of the Register of Deeds, this _____ day of _____, 2009 at _____ o'clock _____ M., and is duly recorded.

_____, Register of Deeds
Bill Meek

_____, Deputy
Tonya Buckingham

NOTE: A drainage plan has been developed for this subdivision and is on file with the appropriate governing body. Drainage intent shall remain as depicted or as modified with the approval of the Engineer for the appropriate governing body. No obstructions which impede the flow of this drainage plan shall be allowed.

SEDGWICK COUNTY FIRE STATION NO. 39 (BAUGHMAN COMPANY, P.A.)