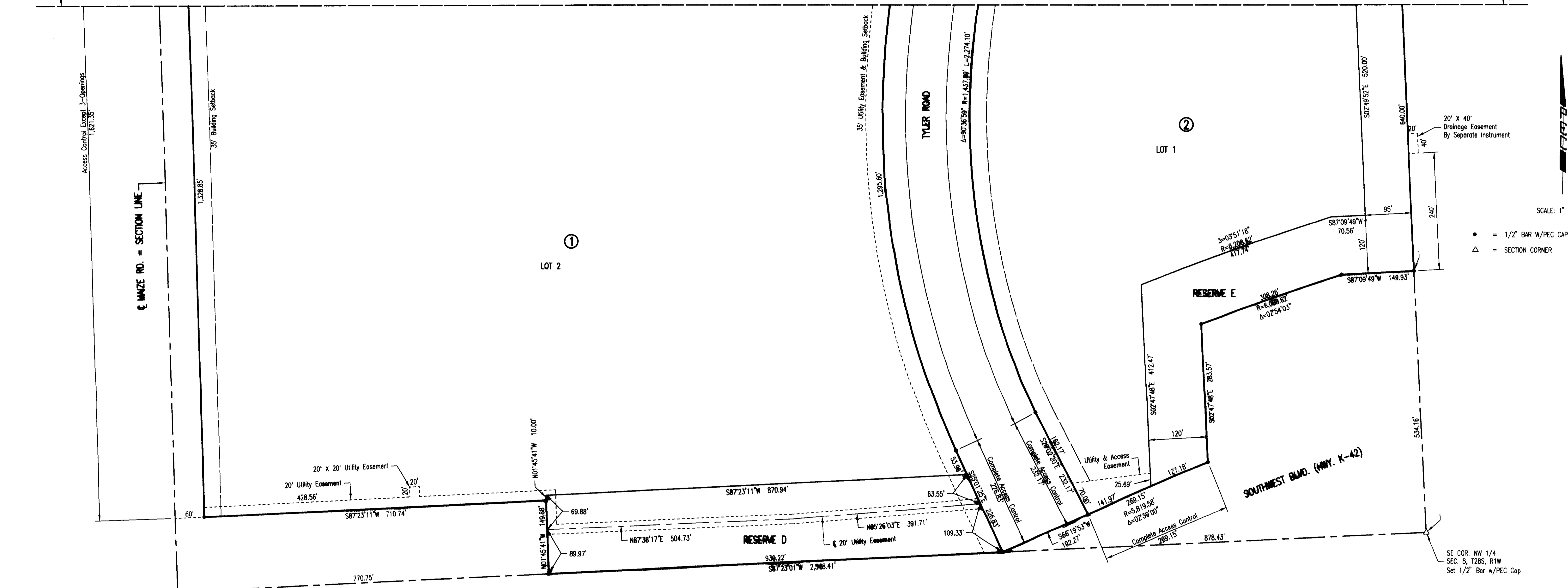


# SKYWAY INDUSTRIAL PARK 2ND

AN ADDITION TO WICHITA, SEDGWICK COUNTY, KANSAS

MARGIN LINE MATCH LINE



SCALE: 1" = 100'

• = 1/2" BAR W/PEC CAP UNLESS OTHERWISE NOTED  
 △ = SECTION CORNER

SW COR. NW 1/4  
 SEC. 8, T28S, R1W  
 Fd. 1/2" Bar w/Cap

SE COR. NW 1/4  
 SEC. 8, T28S, R1W  
 Set 1/2" Bar w/PEC Cap

STATE OF KANSAS }  
 COUNTY OF SEDGWICK } SS

WE, PROFESSIONAL ENGINEERING CONSULTANTS, P.A., ENGINEERS AND SURVEYORS IN AFORESAID STATE AND COUNTY, DO HEREBY CERTIFY THAT OF THIS 7th DAY OF October, 2009, WE HAVE SURVEYED AND PLATTED SKYWAY INDUSTRIAL PARK 2ND, AN ADDITION TO WICHITA, SEDGWICK COUNTY, KANSAS, INTO LOTS, BLOCKS, STREETS, AND RESERVES, THE SAME BEING DESCRIBED AS FOLLOWS:

PARCEL 1:  
 LOTS 1, 2, 3, 4, 5 AND 6, BLOCK A; LOT 1, BLOCK B; LOTS 1, 2, 3, 4, 5, 6, 7, 8 AND 9, BLOCK C; LOTS 1 AND 2, BLOCK D; LOT 1, BLOCK E; LOTS 1, 2, 3, 4, 5 AND 6, BLOCK F; AND RESERVES A, B, C, D AND E, ALL IN SKYWAY INDUSTRIAL PARK, AN ADDITION TO WICHITA, SEDGWICK COUNTY, KANSAS.

PARCEL 2:  
 LOT 1, AND THE NORTH 300 FEET OF LOT 2, BLOCK 1, DUGAN INDUSTRIAL THIRD ADDITION, SEDGWICK COUNTY, KANSAS.

ALL PUBLIC EASEMENTS LYING WITHIN THE ABOVE DESCRIBED TRACT OF LAND ARE HEREBY VACATED AND REPLATED BY VIRTUE OF KSA 12-512(b) AMENDED.

ALL ABUTTER'S RIGHT OF ACCESS TO AND FROM MAIZE RD. OVER AND ACROSS THE WEST PROPERTY LINE, TO AND FROM 31ST ST. S. OVER AND ACROSS THE NORTH PROPERTY LINE AND TO AND FROM TYLER RD. AND K-42 IS HEREBY GRANTED TO THE CITY OF WICHITA, PROVIDED HOWEVER THAT THERE SHALL BE ACCESS TO MAIZE RD. AT THREE LOCATIONS, ACCESS TO 31ST ST. S. AT TWO LOCATIONS, AND ACCESS TO EACH SIDE OF TYLER RD. AT THREE LOCATIONS AS SHOWN. THERE SHALL BE COMPLETE ACCESS CONTROL ALONG K-42. THE LOCATION OF ALL ACCESS OPENINGS SHALL BE IN ACCORDANCE WITH MINIMUM SPACING REQUIREMENTS OF THE WICHITA/SEDGWICK COUNTY ACCESS MANAGEMENT STANDARDS.

THE STREETS ARE HEREBY DEDICATED TO AND FOR THE USE OF THE PUBLIC. EASEMENTS FOR THE CONSTRUCTION AND MAINTENANCE OF PUBLIC UTILITIES ARE HEREBY GRANTED.

A DRAINAGE PLAN HAS BEEN APPROVED FOR THIS PLAT. ALL DRAINAGE EASEMENTS, RIGHTS-OF-WAY, OR RESERVES SHALL REMAIN AT ESTABLISHED GRADES AND UNOBSTRUCTED TO ALLOW FOR THE CONVEYANCE OF STORM WATER, UNLESS MODIFIED WITH THE APPROVAL OF THE CITY ENGINEER.

RESERVES "A", "D" AND "E" ARE FOR DETENTION, DRAINAGE, LANDSCAPING AND UTILITIES CONFINED TO EASEMENTS. RESERVES "B" AND "C" ARE FOR LANDSCAPING AND UTILITIES CONFINED TO EASEMENTS. RESERVES "A" THRU "E" SHALL BE OWNED AND MAINTAINED BY AN OWNERS ASSOCIATION TO BE FORMED WITHIN SKYWAY INDUSTRIAL PARK 2ND.

KNOW ALL MEN BY THESE PRESENTS THAT WE, THE UNDERSIGNED PROPERTY OWNERS OF THE LAND AS ABOVE SET FORTH IN THE SURVEYOR'S CERTIFICATE, HAVE CAUSED THE LAND TO BE SURVEYED AND PLATTED INTO LOTS, BLOCKS, STREETS, AND RESERVES, THE SAME TO BE KNOWN AS SKYWAY INDUSTRIAL PARK 2ND, AN ADDITION TO WICHITA, SEDGWICK COUNTY, KANSAS.

OWNER:  
 THE CITY OF WICHITA, KANSAS, A MUNICIPAL CORPORATION  
 \_\_\_\_\_, MAYOR  
 CARL BREWER

STATE OF KANSAS }  
 COUNTY OF SEDGWICK } SS

THIS INSTRUMENT WAS ACKNOWLEDGED BEFORE ME ON THIS \_\_\_\_\_ DAY OF \_\_\_\_\_, 2009, BY CARL BREWER, MAYOR

\_\_\_\_\_, NOTARY PUBLIC

MY APPOINTMENT EXPIRES: \_\_\_\_\_

THIS PLAT IS APPROVED AND ALL DEDICATIONS SHOWN HEREON, IF ANY ARE ACCEPTED BY THE CITY COUNCIL OF THE CITY OF WICHITA, KANSAS, THIS \_\_\_\_\_ DAY OF \_\_\_\_\_, 2009.

\_\_\_\_\_, MAYOR  
 CARL BREWER  
 \_\_\_\_\_, CITY CLERK  
 KAREN SUBLETT

ENTERED ON TRANSFER RECORD THIS \_\_\_\_\_ DAY OF \_\_\_\_\_, 2009.

\_\_\_\_\_, COUNTY CLERK  
 KELLY B. ARNOLD

THIS IS TO CERTIFY THAT THIS INSTRUMENT WAS FILED FOR RECORD IN THE REGISTER OF DEEDS OFFICE AT \_\_\_\_\_, MO., ON THE \_\_\_\_\_ DAY OF \_\_\_\_\_, 2009.

\_\_\_\_\_, REGISTER OF DEEDS  
 BILL MEEK  
 \_\_\_\_\_, DEPUTY  
 TONYA BUCKINGHAM

STATE OF KANSAS }  
 COUNTY OF SEDGWICK } SS

THIS PLAT OF SKYWAY INDUSTRIAL PARK 2ND HAS BEEN SUBMITTED TO AND APPROVED BY THE WICHITA-SEDGWICK COUNTY METROPOLITAN AREA PLANNING COMMISSION, WICHITA, KANSAS.

DATED THIS \_\_\_\_\_ DAY OF \_\_\_\_\_, 2009.

\_\_\_\_\_, CHAIR  
 DARRELL DOWNING  
 \_\_\_\_\_, SECRETARY  
 JOHN L. SCHLEGEL

REVIEWED IN ACCORDANCE WITH K.S.A. 58-2005 ON THIS \_\_\_\_\_ DAY OF \_\_\_\_\_, 2009.

TRICIA L. ROBELLO, LS #1246  
 DEPUTY COUNTY SURVEYOR  
 SEDGWICK COUNTY KANSAS

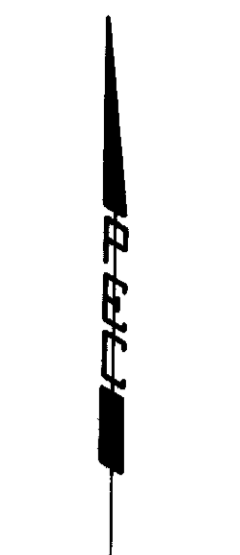


# SKYWAY INDUSTRIAL PARK 2ND

AN ADDITION TO WICHITA, SEDGWICK COUNTY, KANSAS

10-8-09  
SUB 2009-43

FILE COPY



SCALE: 1" = 100'

- = 1/2" REBAR W/PEC CAP UNLESS OTHERWISE NOTED
- △ = SECTION CORNER

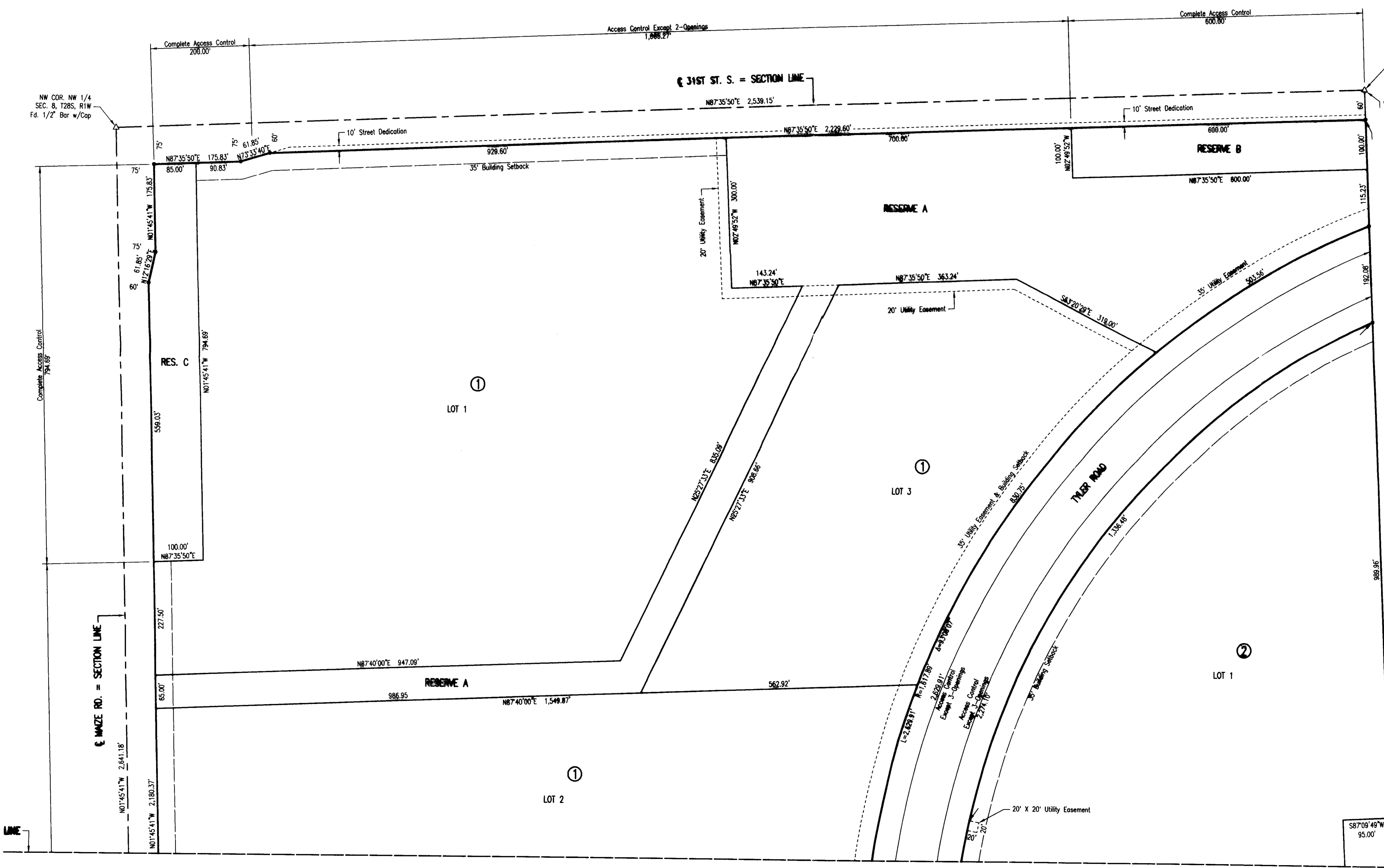
NE COR. NW 1/4  
SEC. 8, T28S, R1W  
Fd. 1-1/2" Iron Pipe

BM #50

**BENCHMARKS**

- BM #50  
A CITY OF WICHITA BRASS DISC LOCATED 50.0 FEET SE. OF THE N 1/4 CORNER OF SECTION 8, T28S, R1W.  
ELEV. 1318.06 NAVD. 88
- BM #51  
A CHISELED SQUARE ON THE SOUTHWEST END OF A CONCRETE CULVERT LOCATED ON THE NORTH SIDE OF 31ST ST. AND OLD TYLER RD.  
ELEV. 1313.31 NAVD. 88
- BM #52  
A CHISELED SQUARE ON THE CENTER SOUTH CONCRETE HEADWALL OF A RCB LOCATED 335 FEET WEST MAIZE RD. ON THE SOUTH SIDE OF 31ST ST. SOUTH  
ELEV. 1331.82 NAVD. 88

MINIMUM PAD ELEVATIONS:	
LOT 1, BLOCK 1-	1326.6 (NAVD 88)
LOT 2, BLOCK 1-	1329.7 (NAVD 88)
LOT 3, BLOCK 1-	1329.7 (NAVD 88)
LOT 1, BLOCK 2-	1327.3 (NAVD 88)



MATCH LINE

MATCH LINE